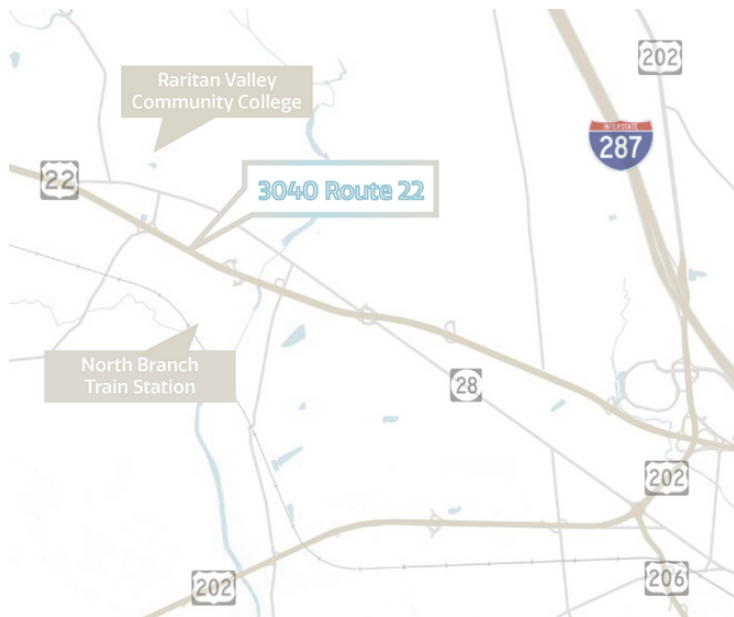


SEE A BRIGHTER WAY

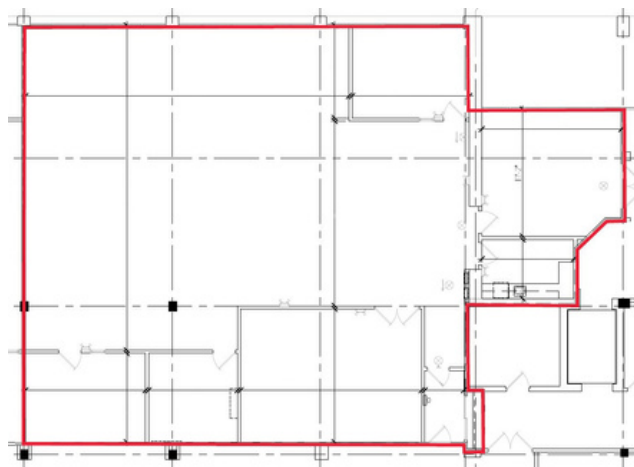
# For Lease

3040 US Highway 22  
Branchburg, NJ 08876

## Map & Floorplans



**4,620 sf**



## Specs

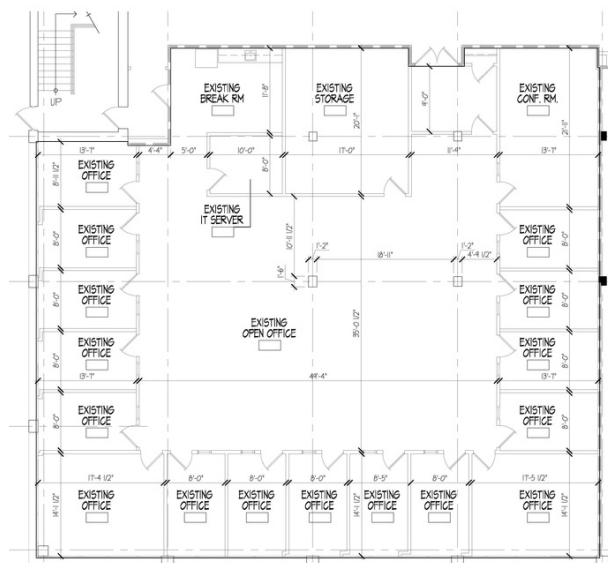
4,620 SF available on 1st floor  
6,371 SF available on 1st floor

Term negotiable

On-site management, expandable parking, loading available, beach volleyball court, cafeteria, and outdoor seating

Direct access to Route 22 and Route 28.  
Train station 1.7 mi away

**6,371 sf**



**Jon Compitello**  
[jon.compitello@jll.com](mailto:jon.compitello@jll.com)  
+1 732 590 4164

**Fred Hyatt**  
[fred.hyatt@jll.com](mailto:fred.hyatt@jll.com)  
+1 973 829 4688

**jll.com**

Jones Lang LaSalle Americas, Inc.

Although information has been obtained from sources deemed reliable, neither Owner nor JLL makes any guarantees, warranties or representations, express or implied, as to the completeness or accuracy as to the information contained herein. Any projections, opinions, assumptions or estimates used are for example only. There may be differences between projected and actual results, and those differences may be material. The Property may be withdrawn without notice. Neither Owner nor JLL accepts any liability for any loss or damage suffered by any party resulting from reliance on this information. If the recipient of this information has signed a confidentiality agreement regarding this matter, this information is subject to the terms of that agreement. © 2023 Jones Lang LaSalle IP, Inc. All rights reserved.