

For Sale

955 E. North Territorial Road
Whitmore Lake, MI
35,561 SF Available



JLL

Colin McCausland

Senior Associate

colin.mccausland@jll.com

+1 248 581 3308

Sean Cavanaugh

Executive Vice President

sean.cavanaugh@jll.com

+1 248 581 3331

Property Overview

Property Detail

- Auto testing building with full and hemi anechoic chambers
- Hemi anechoic chamber features an AVL AWD (Full Vehicle) Chassis Dyno
- Heavy 2500a/480v/3p power
- 100% temperature controlled
- Proximity to US-23 with easy access to both Ann Arbor and metro Detroit markets
- Expandable to 60,000 SqFt
- 1 Dock/1 GL Door
- Backup generator and cooling tower

Asking Price: \$4,800,000 (\$135.00/ft)

35,561 SF Available

Warehouse	33,000 s.f.
------------------	-------------

Office	2,000 s.f.
---------------	------------

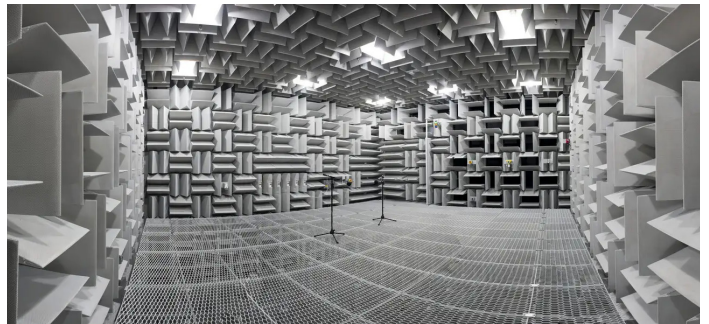
Ceiling height	24'
-----------------------	-----

Year built	2017
-------------------	------

Zoning	Research/Technology/ Manufacturing
---------------	---------------------------------------



Photos



JLL

Colin McCausland

Senior Associate

colin.mccausland@jll.com

+1 248 581 3308

Sean Cavanaugh

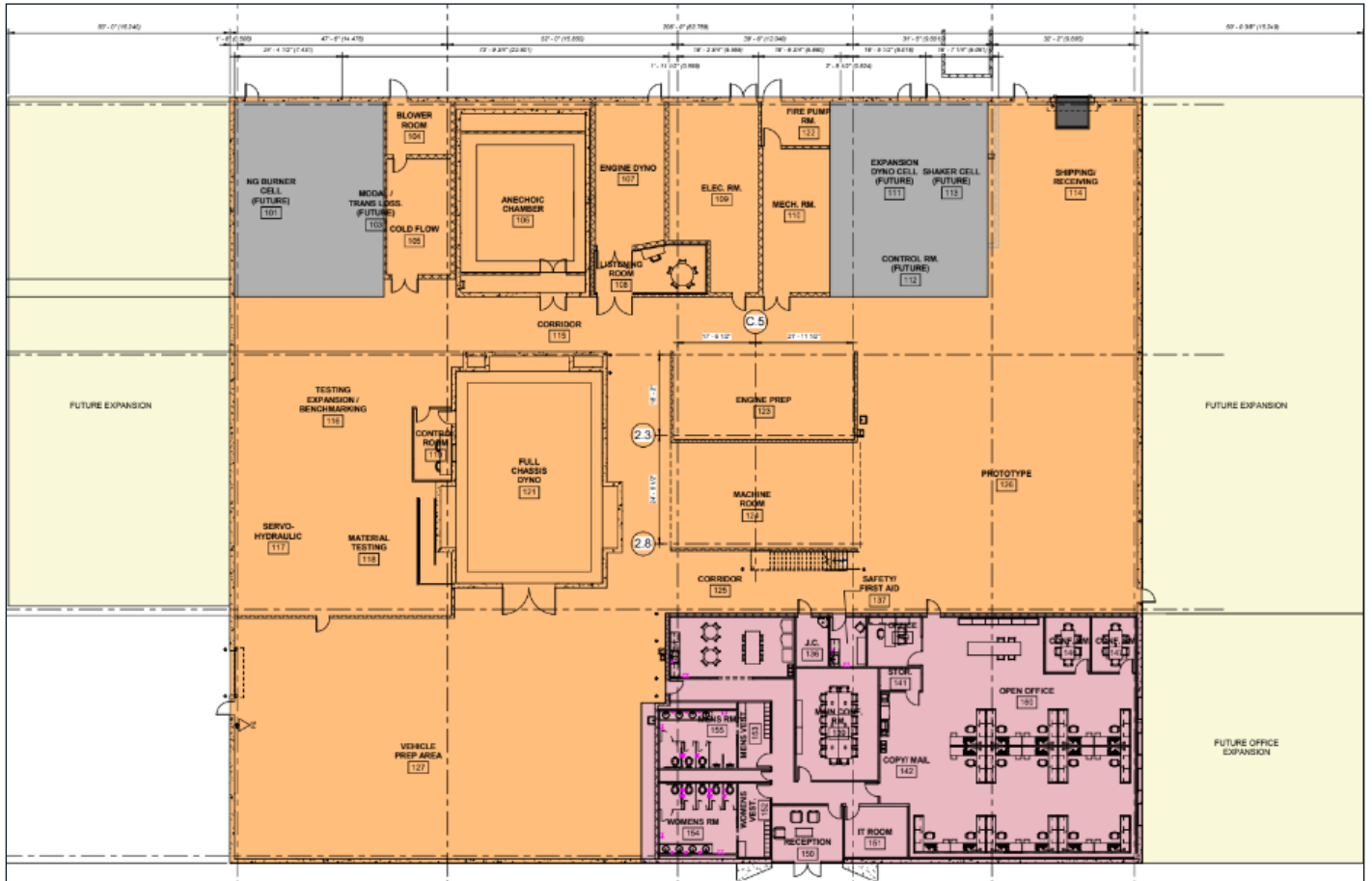
Executive Vice President

sean.cavanaugh@jll.com

+1 248 581 3331

Although information has been obtained from sources deemed reliable, JLL does not make any guarantees, warranties or representations, express or implied, as to the completeness or accuracy as to the information contained herein. Any projections, opinions, assumptions or estimates used are for example only. There may be differences between projected and actual results, and those differences may be material. JLL does not accept any liability for any loss or damage suffered by any party resulting from reliance on this information. If the recipient of this information has signed a confidentiality agreement with JLL regarding this matter, this information is subject to the terms of that agreement. ©2024. Jones Lang LaSalle IP, Inc. All rights reserved.

SEE A BRIGHTER WAY



JLL

Colin McCausland

Senior Associate

colin.mccausland@jll.com

+1 248 581 3308

Sean Cavanaugh

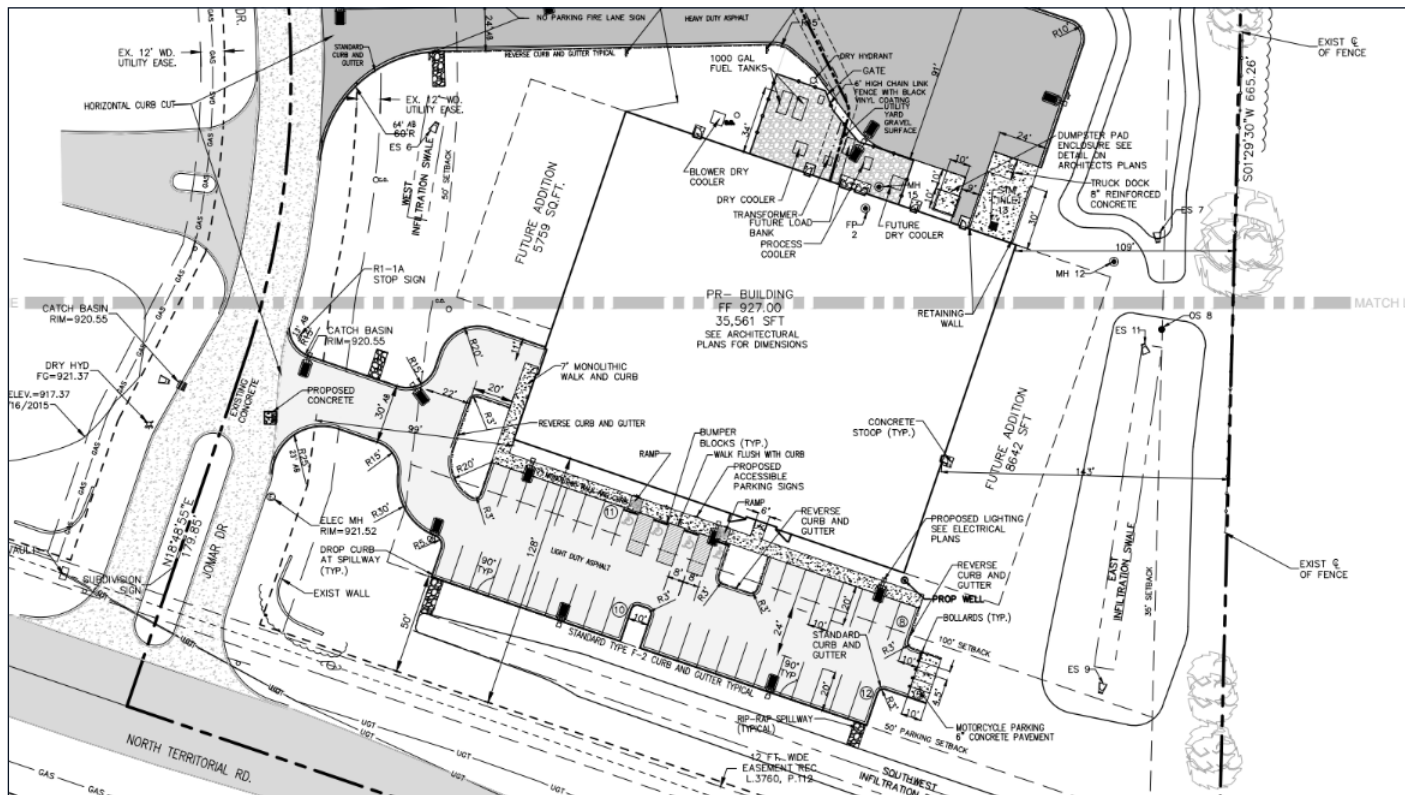
Executive Vice President

sean.cavanaugh@jll.com

+1 248 581 3331

Although information has been obtained from sources deemed reliable, JLL does not make any guarantees, warranties or representations, express or implied, as to the completeness or accuracy as to the information contained herein. Any projections, opinions, assumptions or estimates used are for example only. There may be differences between projected and actual results, and those differences may be material. JLL does not accept any liability for any loss or damage suffered by any party resulting from reliance on this information. If the recipient of this information has signed a confidentiality agreement with JLL regarding this matter, this information is subject to the terms of that agreement. ©2024. Jones Lang LaSalle IP, Inc. All rights reserved.

Site Plan



JLL

Colin McCausland

Senior Associate

colin.mccausland@jll.com

+1 248 581 3308

Sean Cavanaugh

Executive Vice President

sean.cavanaugh@jll.com

+1 248 581 3331

Although information has been obtained from sources deemed reliable, JLL does not make any guarantees, warranties or representations, express or implied, as to the completeness or accuracy as to the information contained herein. Any projections, opinions, assumptions or estimates used are for example only. There may be differences between projected and actual results, and those differences may be material. JLL does not accept any liability for any loss or damage suffered by any party resulting from reliance on this information. If the recipient of this information has signed a confidentiality agreement with JLL regarding this matter, this information is subject to the terms of that agreement. ©2024. Jones Lang LaSalle IP, Inc. All rights reserved.