 JLL SEE A BRIGHTER WAY

For lease

1550 Pond Road
Class A, 145,000 SF, three-story office complex

Building availabilities

1550 Pond Road is in a very nice business park location on the West End of Allentown. The building is located less than 1 mile from Route 22, and easy access to Route 309 and the Northeast Extension of the Pennsylvania Turnpike (I-476).

Current availabilities in the building include:

- 2,335 SF and 9,751 SF on the 2nd floor
- 18,641 SF on the 3rd floor

Available spaces can be divided.

Abundant parking

1550 Pond Road offers garage and parking deck options. With 798 car parking spaces, this building provides the capacity to meet the highest parking demands.

Desired amenities

1550 Pond Road provides a fitness center with locker room with showers and dual electric underground power and data feeds.

The 2024 common area improvements to include lobby improvements, restroom renovations (underway), and additional artwork in hallways

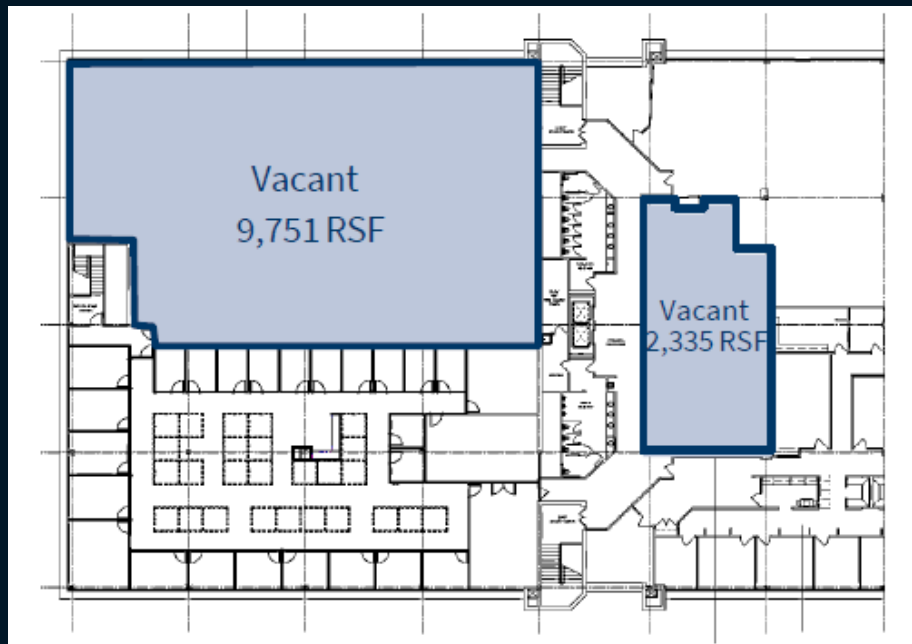
Retail, restaurants, and other local amenities within walking distance.

1550 Pond Road Allentown, PA

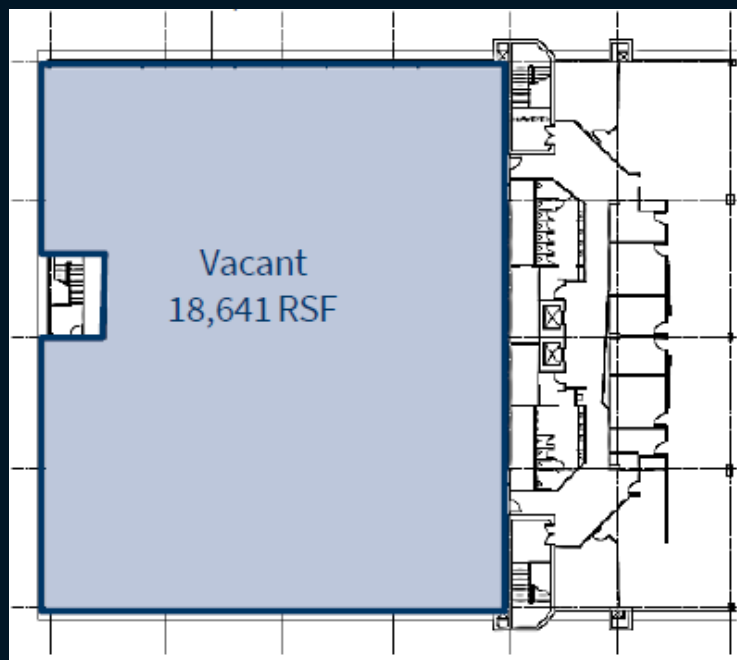


1550 Pond Road Allentown, PA

2nd floor
12,086 SF



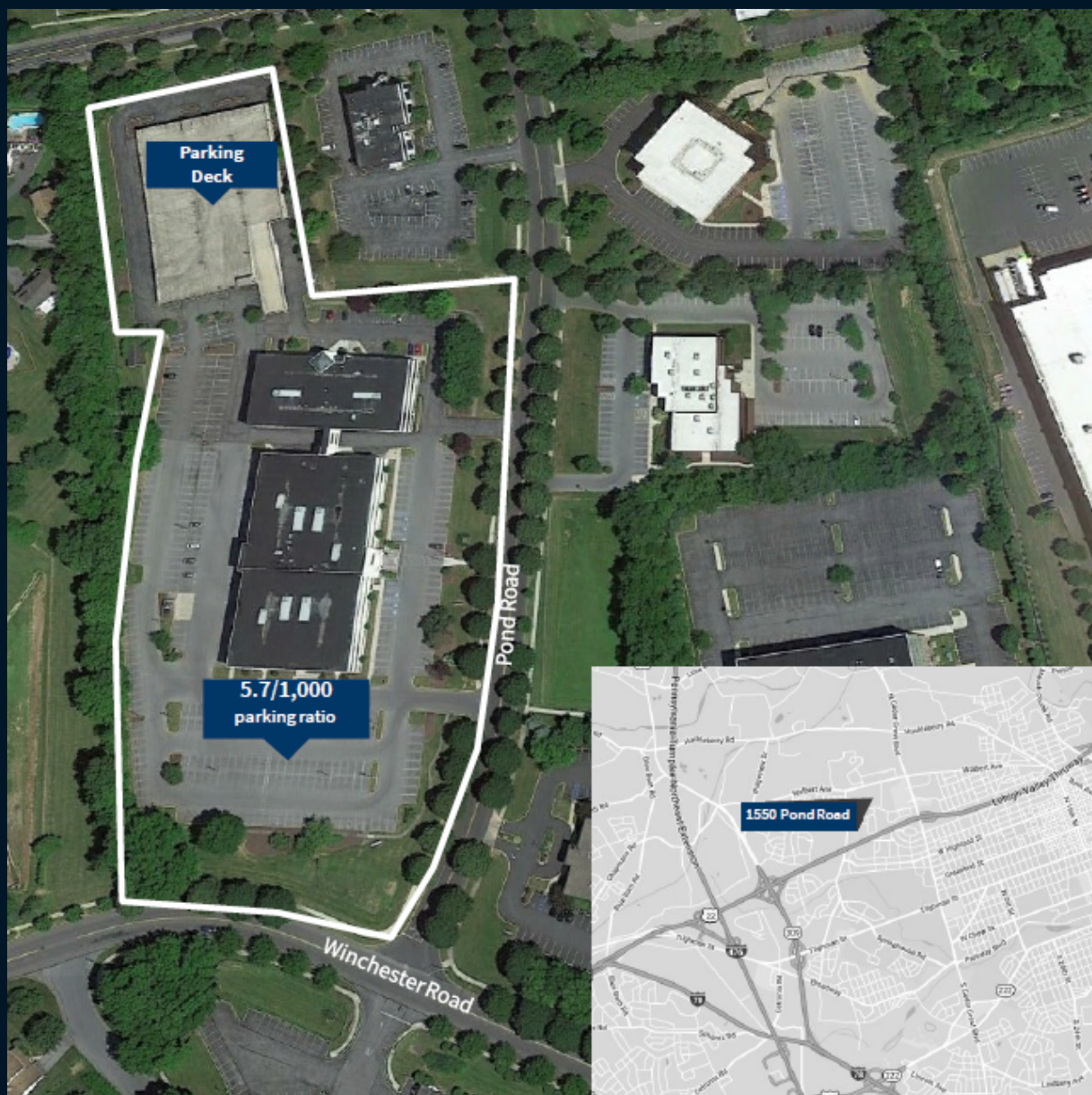
3rd floor
18,641 SF



Functional quality

1550 Pond Road is for companies seeking a high-quality office space with functional structure, location, and amenities.

Situated on 7.71 acres and a 5.70/1,000 parking ratio.



Phil Schenkel
Executive Vice President
phil.schenkel@jll.com
+1 484 635 3228

Matthew Dorman
Vice President
matthew.dorman@jll.com
+1 484 635 3236

Jones Lang LaSalle Brokerage, Inc.
1550 Pond Road, Suite 150
Allentown, PA 18104
+1 484 635 3300

Owned & Managed by:

