

# 57,600 SF

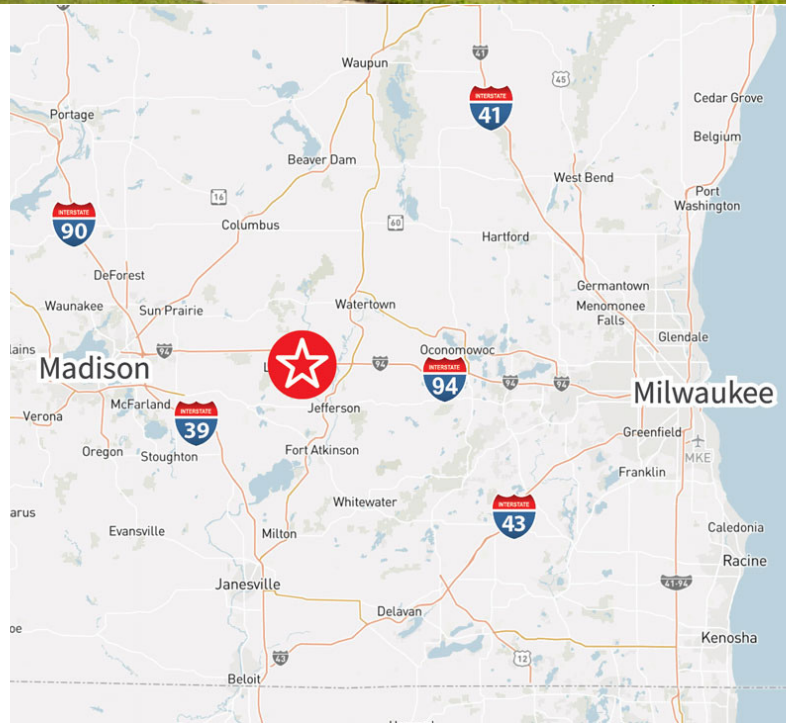
## Available for lease

100 S C.P. Ave., Lake Mills, WI 53551



### Property highlights

- Available: 57,600 SF
- Power: 110-460V
- Clear height: 32'
- Docks: Two (2)
- Drive-ins: One (1)
- Ideal for warehousing / storage use



**James Young**  
+1 262 853 4002  
[james.young@jll.com](mailto:james.young@jll.com)

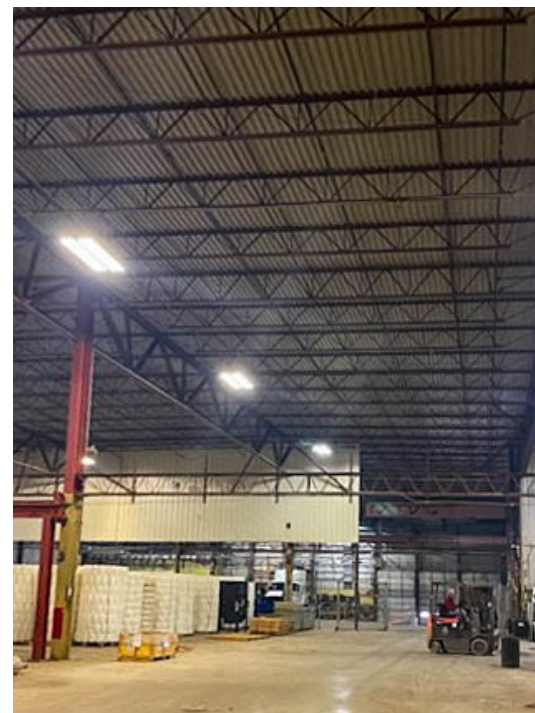
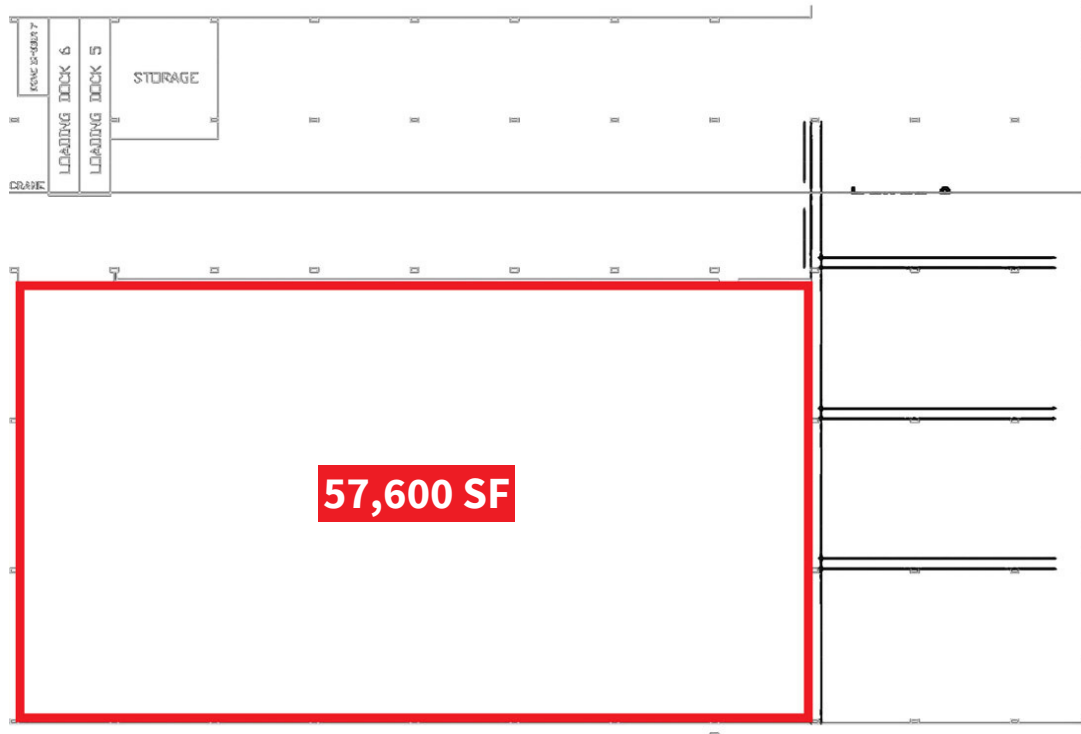
**Joan McCarthy**  
+1 608 381 4033  
[joan.mccarthy@jll.com](mailto:joan.mccarthy@jll.com)

**Chuck Rosien**  
+1 312 228 2856  
[chuck.rosien@jll.com](mailto:chuck.rosien@jll.com)

[jll.com](http://jll.com)

Jones Lang LaSalle Brokerage, Inc. a  
licensed real estate broker.

100 S C.P. Ave.  
Lake Mills, WI 53551



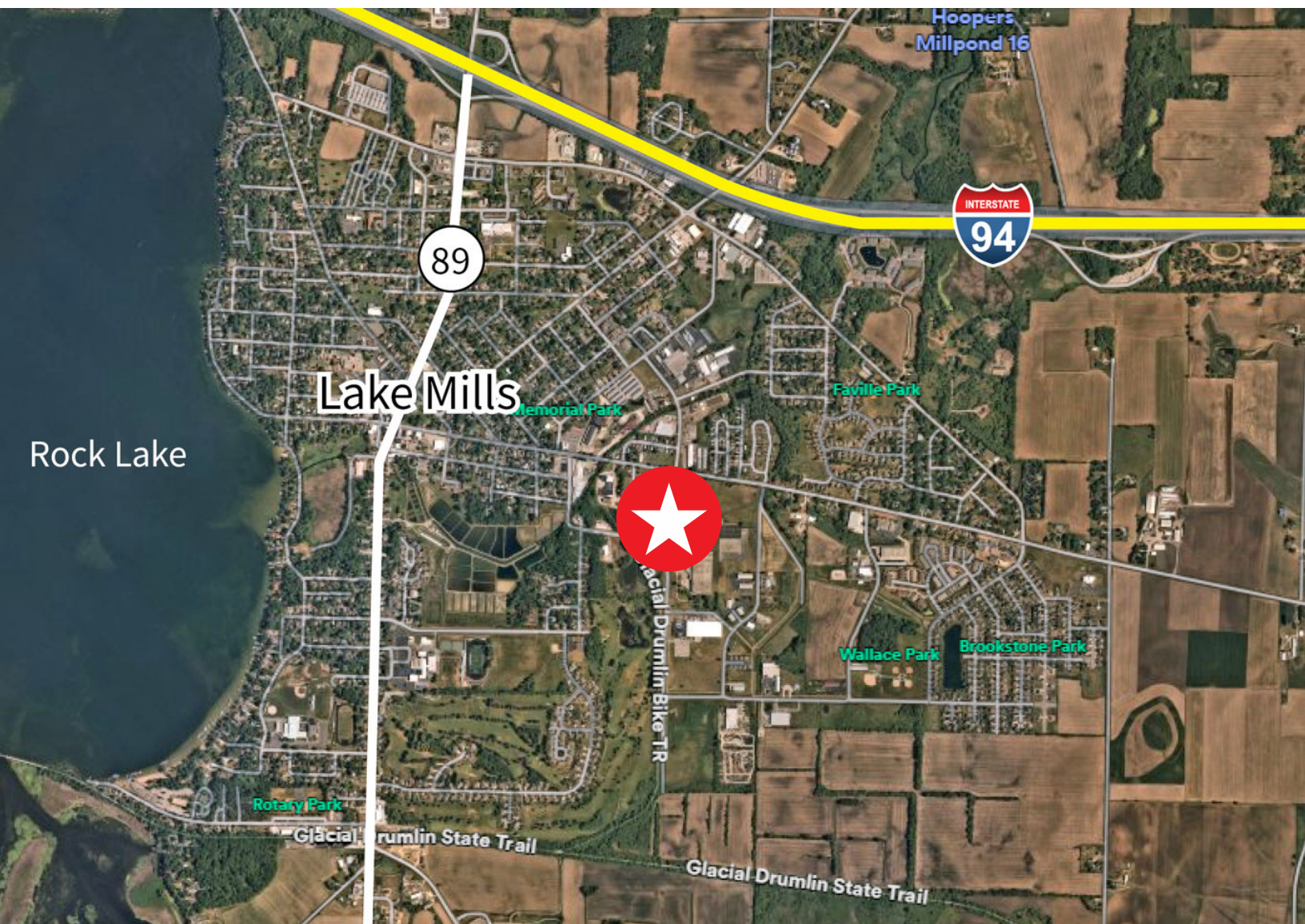


100 S C.P. Ave.  
Lake Mills, WI 53551

**Distance to:**

- Interstate 94: 1.5 miles
- Madison: 28.9 miles
- Milwaukee: 53.9 miles

Located along the Milwaukee-Madison corridor, this prime industrial property offers seamless connectivity and strategic access to both major markets.





## About JLL

For over 200 years, JLL (NYSE: JLL), a leading global commercial real estate and investment management company, has helped clients buy, build, occupy, manage and invest in a variety of commercial, industrial, hotel, residential and retail properties. A Fortune 500® company with annual revenue of \$20.9 billion and operations in over 80 countries around the world, our more than 103,000 employees bring the power of a global platform combined with local expertise. Driven by our purpose to shape the future of real estate for a better world, we help our clients, people and communities SEE A BRIGHTER WAY<sup>SM</sup>. JLL is the brand name, and a registered trademark, of Jones Lang LaSalle Incorporated. For further information, visit [jll.com](https://jll.com).

## JLL

### James Young

+1 262 853 4002

[james.young@jll.com](mailto:james.young@jll.com)

### Joan McCarthy

+1 608 381 4033

[joan.mccarthy@jll.com](mailto:joan.mccarthy@jll.com)

### Chuck Rosien

+1 312 228 2856

[chuck.rosien@jll.com](mailto:chuck.rosien@jll.com)