

# For sublease

1560 Sherman Ave | Evanston  
4,099 RSF - fully furnished!



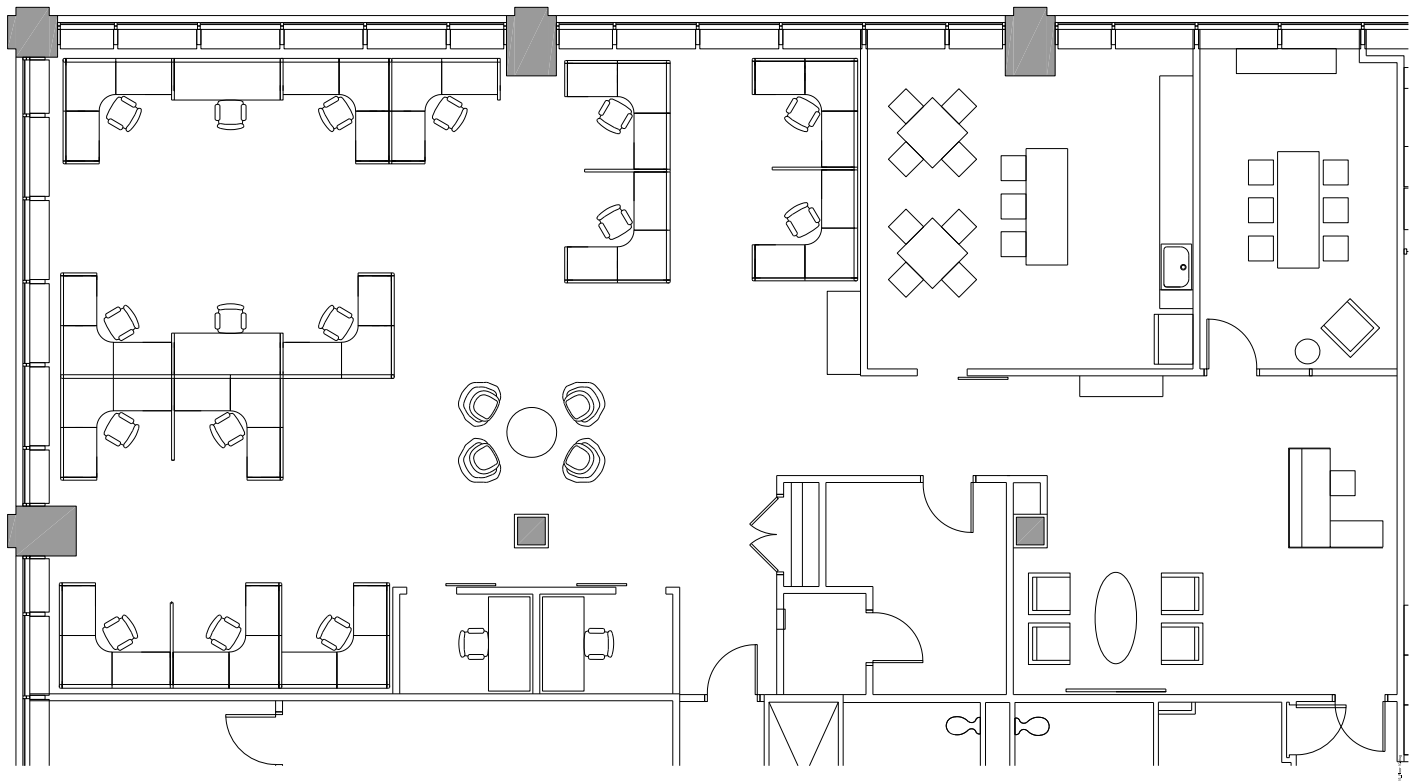
# Furnished sublease in the heart of Evanston

## 4,099 RSF on the 10th floor

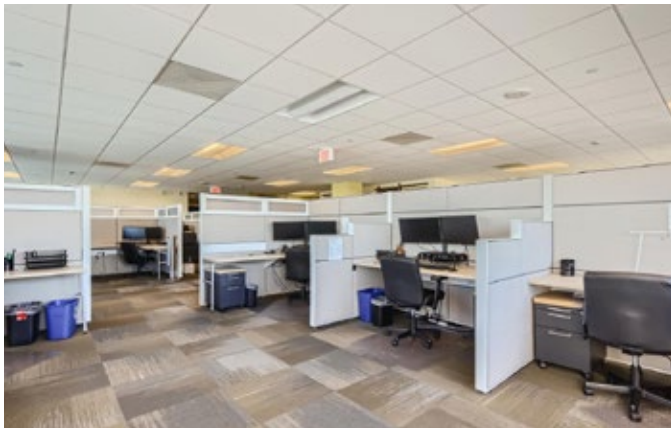
- Sublease term thru July 2026
- Steps away from public transportation (CTA/METRA)
- Conferencing facilities on-site
- Attached parking garage
- Incredible views of downtown and Lake Michigan

### Move-in ready!

16 workstations, 2 phone rooms, conference room with seating for 6, kitchenette, sizable storage/IT and reception.







## JLL

### **Chris Cummins**

[Chris.Cummins@jll.com](mailto:Chris.Cummins@jll.com)

773 458 1352

### **Grady Quinn**

[Grady.Quinn@jll.com](mailto:Grady.Quinn@jll.com)

312 228 2538

#### **About JLL**

For over 200 years, JLL (NYSE: JLL), a leading global commercial real estate and investment management company, has helped clients buy, build, occupy, manage and invest in a variety of commercial, industrial, hotel, residential and retail properties. A Fortune 500 company with annual revenue of \$20.9 billion and operations in over 80 countries around the world, our more than 103,000 employees bring the power of a global platform combined with local expertise. Driven by our purpose to shape the future of real estate for a better world, we help our clients, people and communities SEE A BRIGHTER WAY<sup>SM</sup>. JLL is the brand name, and a registered trademark, of Jones Lang LaSalle Incorporated. For further information, visit [jll.com](http://jll.com).