

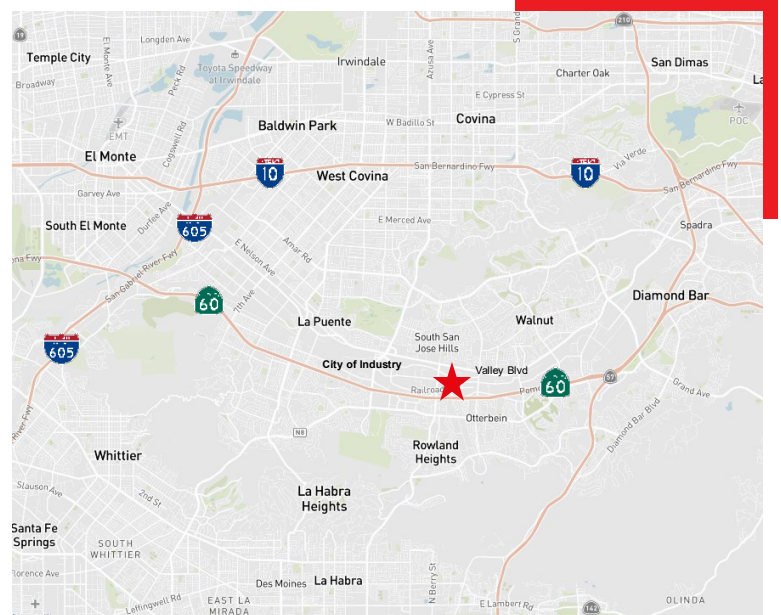
18451-18457 Railroad St  
City of Industry, CA 91748

## Property Highlights

- ±23,680 square feet total
- ±15,000 SF warehouse & ±9,680 SF office
- 4 dock high doors
- 1 ground level door
- 20' clear height
- Fenced yard
- Trailer parking available
- Recently renovated offices
- Front unit with direct street / parking lot access

## Location

- Excellent Central City of Industry location
- 60 Fwy access via Fullerton Rd & Nogales St exits



Rustin Mork  
Managing Director | License # 01448642  
**P** +1 213 239 6181  
**E** [rustin.mork@jll.com](mailto:rustin.mork@jll.com)

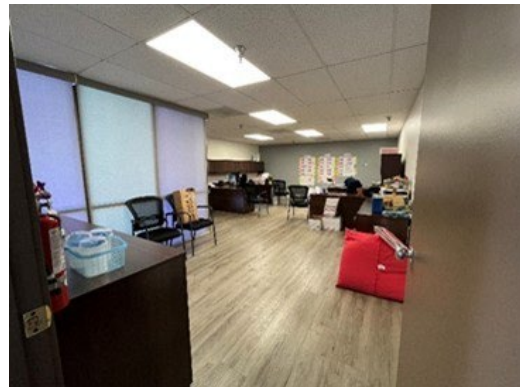
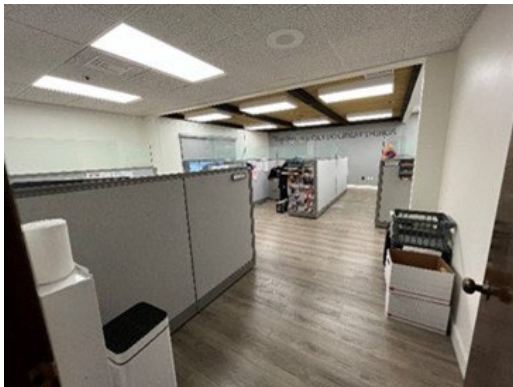
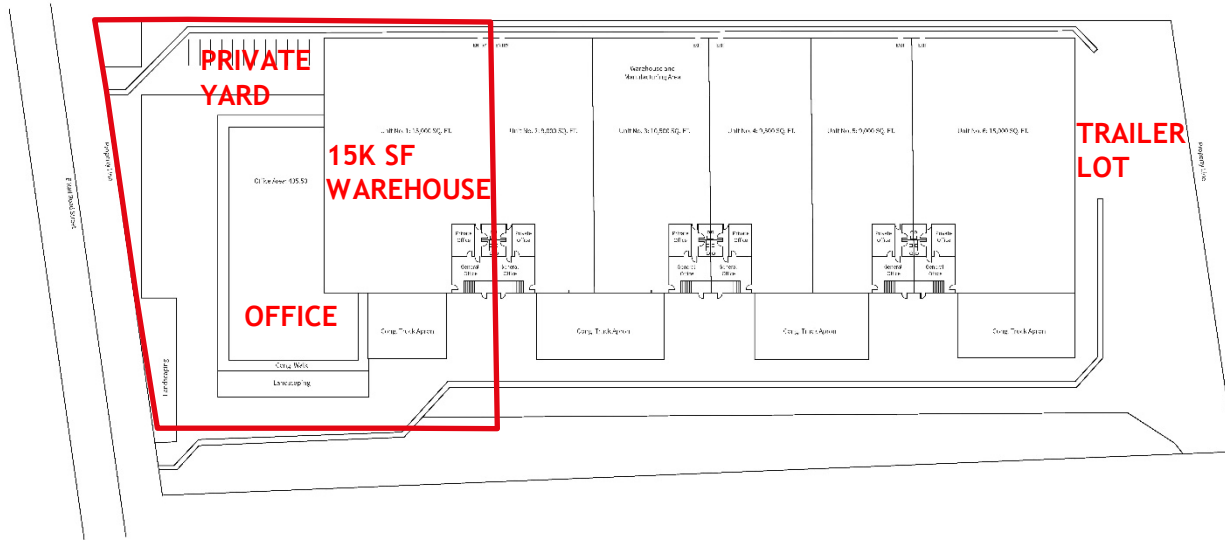
Danny Reaume  
Managing Director | License # 01901656  
**P** 213 239 6065  
**E** [danny.reaume@jll.com](mailto:danny.reaume@jll.com)



# For Lease

±23,680 Sq. Ft.

18451-18457 Railroad St  
City of Industry, CA 91748



**Rustin Mork**  
Managing Director | License # 01448642  
**P** +1 213 239 6181  
**E** [rustin.mork@jll.com](mailto:rustin.mork@jll.com)

**Danny Reaume**  
Managing Director | License # 01901656  
**P** 213 239 6065  
**E** [danny.reaume@jll.com](mailto:danny.reaume@jll.com)