

Prime Retail / Office Space

234 Main Street, Lincoln Park, NJ



Two 2,500 SF Spaces for Lease

Second floor availability

David Townes

Managing Director

+1 917 993 5515

david.townes@jll.com

Alana Friedman

Vice President

+1 201 741 0990

alana.friedman@jll.com



Property **Location**

- » Prime retail / office space in Lincoln Park, NJ
- » Highly visible space available on busy Main Street
- » Located in the heart of downtown Lincoln Park

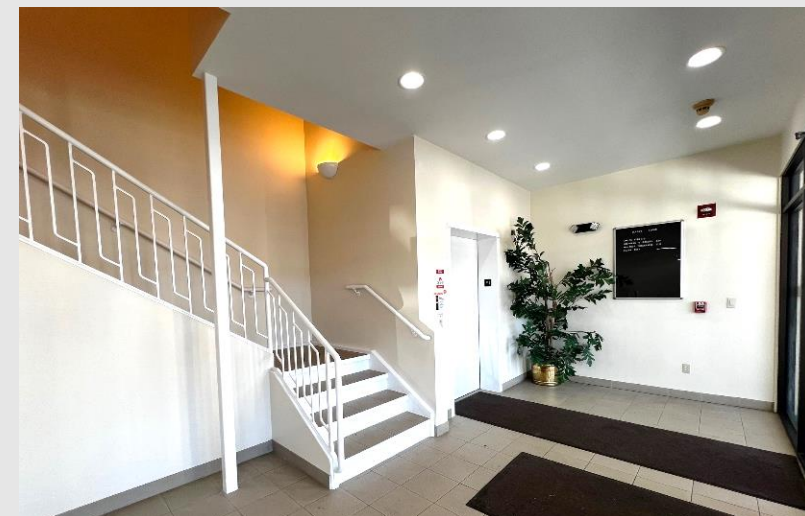
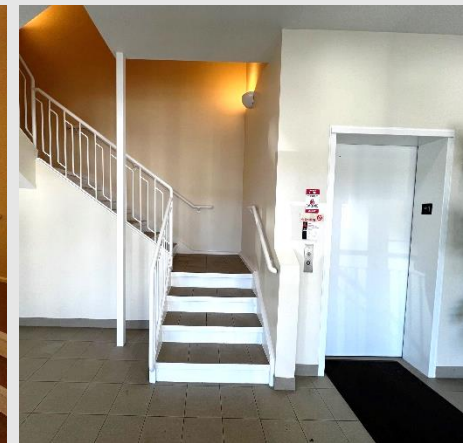
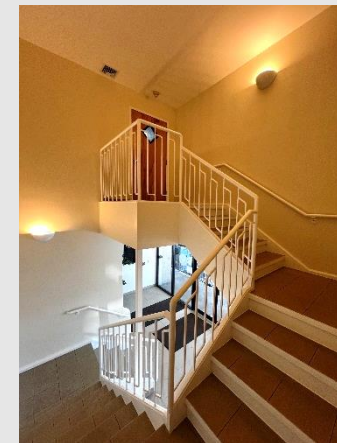
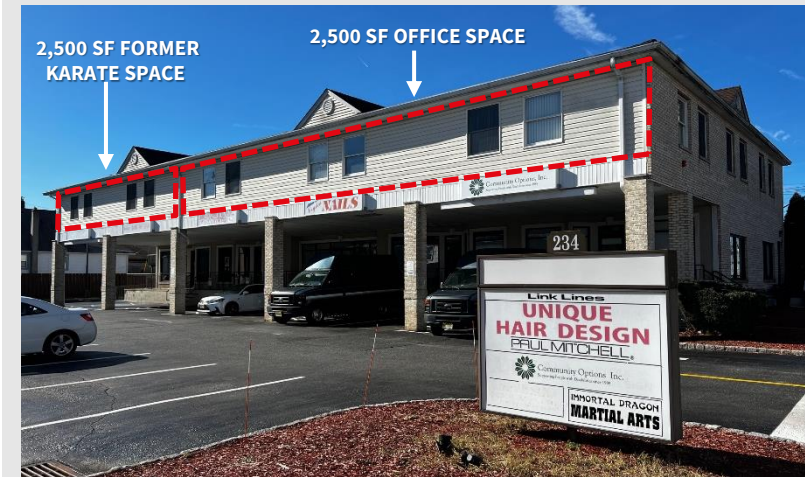
Retail Availability

- » Second floor space with retail signage
- » Availability:
2,500 SF (Former karate studio)
2,500 SF (Office space)
- » Across from Lincoln Park NJ Transit station with 101 riders per weekday
- » Desired uses include medical, dental, physical therapy, fitness, yoga, office or retail

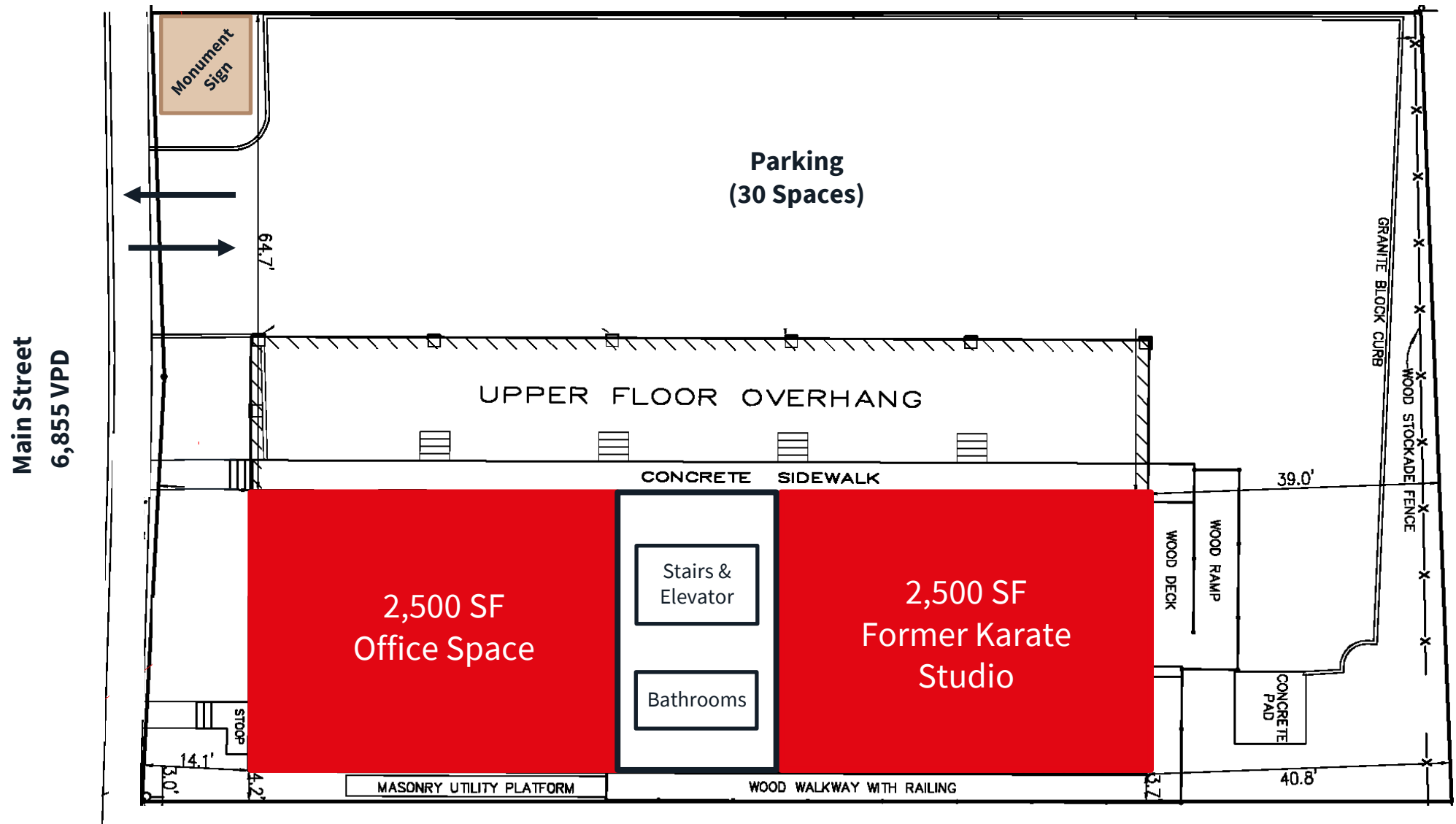
Asking rent

- » Upon request

Trade Area Co-Tenants



| Site Plan



| Interior **Photos**

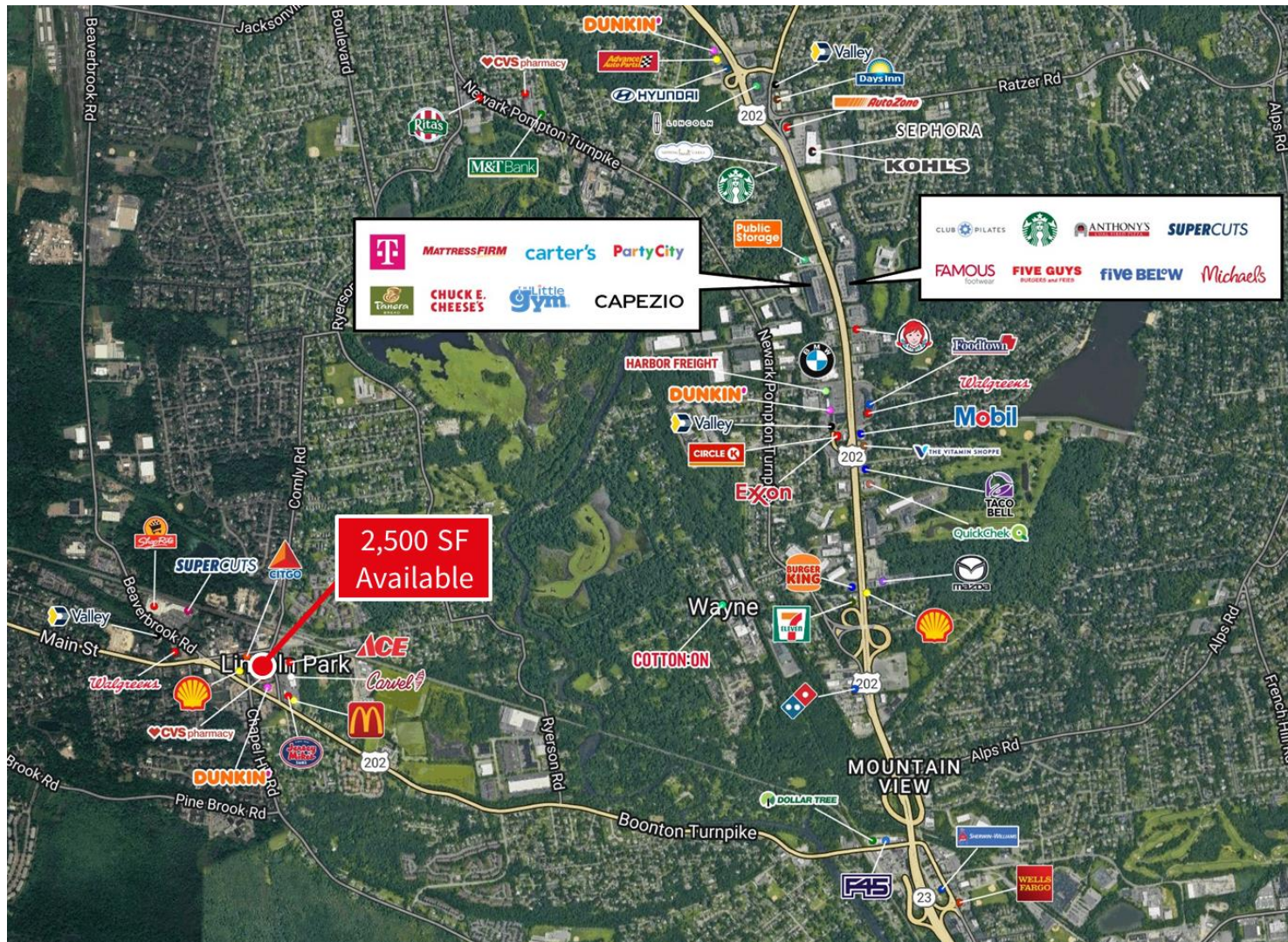
2,500 SF FORMER KARATE SPACE



2,500 SF OFFICE SPACE



Market **Aerial**



For more information contact:

David Townes
Managing Director
+1 917 993 5515
david.townes@jll.com

Alana Friedman
Vice President
+1 201 741 0990
alana.friedman@jll.com

Demographics



44,234
Population



\$117,922
Med. HH Income



25,209
Employees



2,482
Businesses

Demographics taken within 3 miles Source: ESRI, 2023