

For lease

Multi-use facility, 6,047 SF available

1201 Hanley Industrial Ct., Brentwood MO 63144



Property specifications

Size: 6,047 SF office/flex available

Warehouse: *Can be expanded*

Parking: Negotiable

Clear height: 16'

Electric: 3-phase/480 volt

Pricing: **Contact broker**

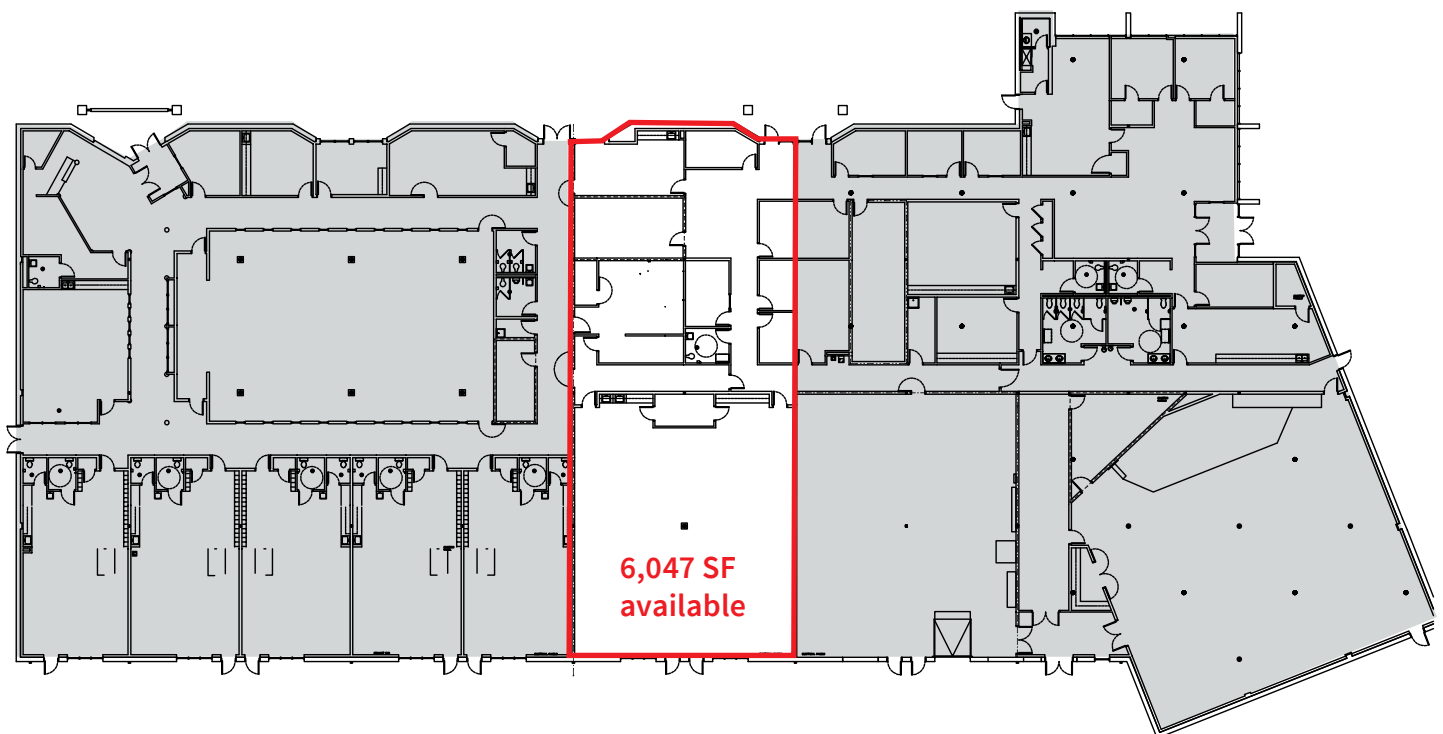


Advantages and amenities

- Prime park office/flex location in Hanley Industrial
- Private offices, conference rooms, classrooms
- Building and monument signage available
- Fully air-conditioned
- Total Renovation in 2009 (roof, H.V.A.C. interior buildout)
- Local on-site property management

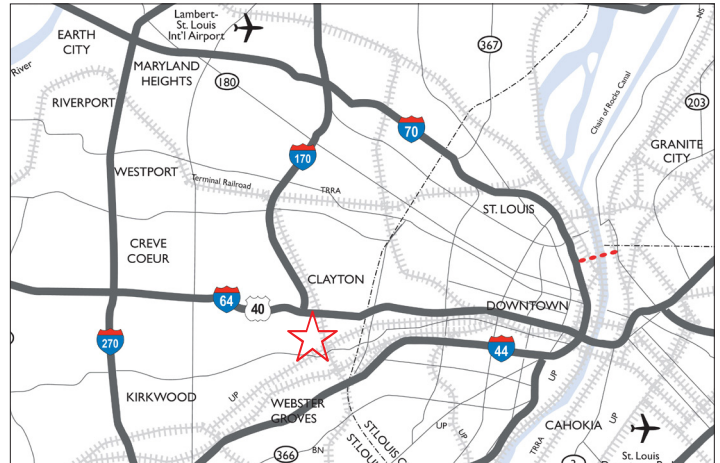


Exceptionally well maintained facility



Prime location with easy accessibility

Conveniently situated in Brentwood, this property offers easy access to major transportation routes, including I-64 and I-170. Its central location provides excellent connectivity to various destinations, making it highly accessible.



David Biales
Managing Director
+1 314 261 7368
david.biales@jll.com

Will Meehan
Senior Vice President
+1 314 368 6201
will.meehan@jll.com