

# For lease

Spaces available at Glendale Town Center  
6101 N. Keystone Ave. Indianapolis, IN  
46220



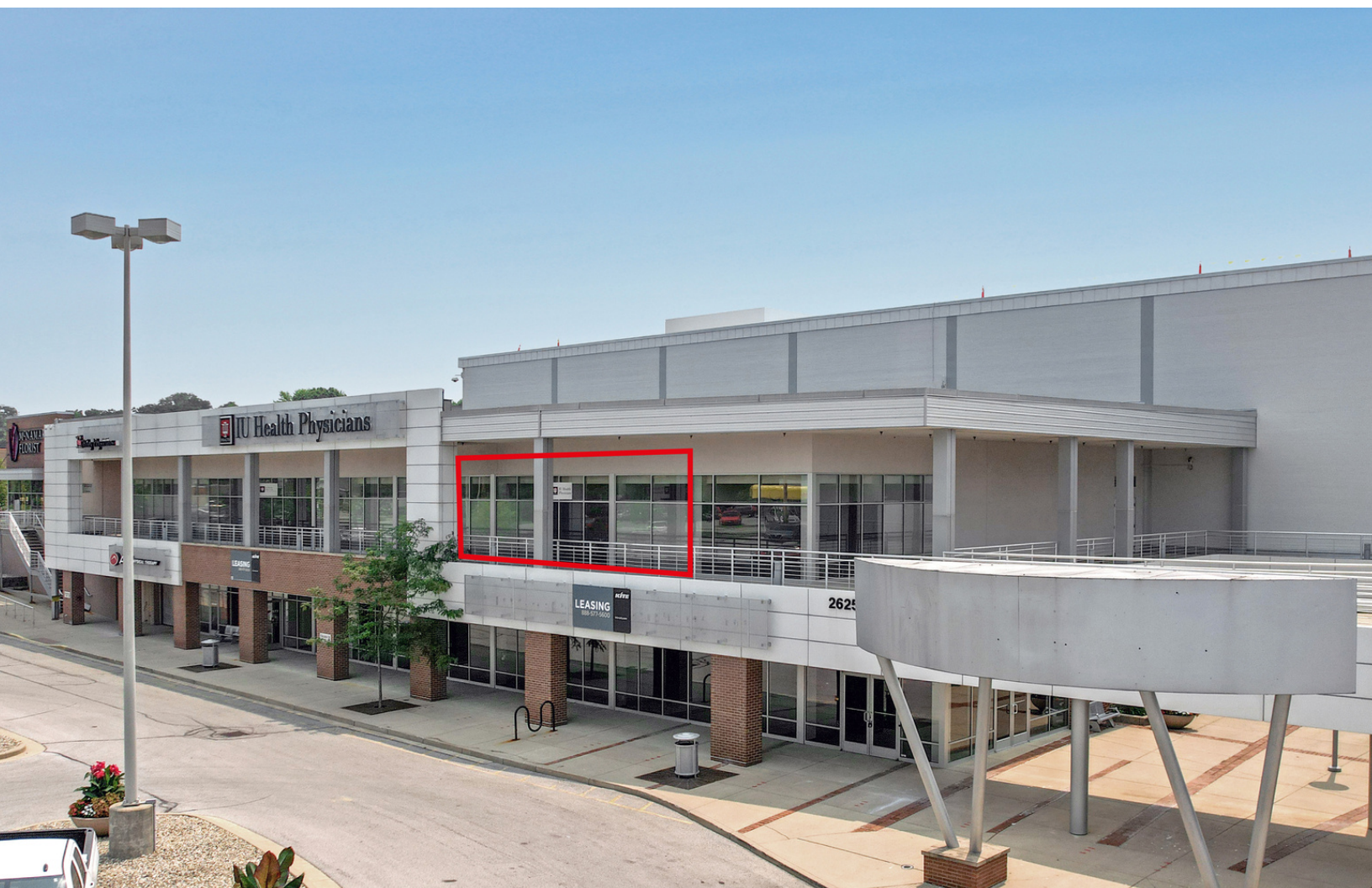


## Property Info

Welcome to Glendale Town Center, where shopping, dining, and entertainment come together in perfect harmony. As the anchor of Glendale, this vibrant destination offers a unique and diverse experience for all. With an exceptional selection of popular retailers, boutique shops, and specialty stores, you'll find everything you need and more. From family-friendly activities to live entertainment and events, there is always something exciting happening near Glendale Town Center. Come and discover the essence of urban living, where convenience meets style, at Glendale Town Center.

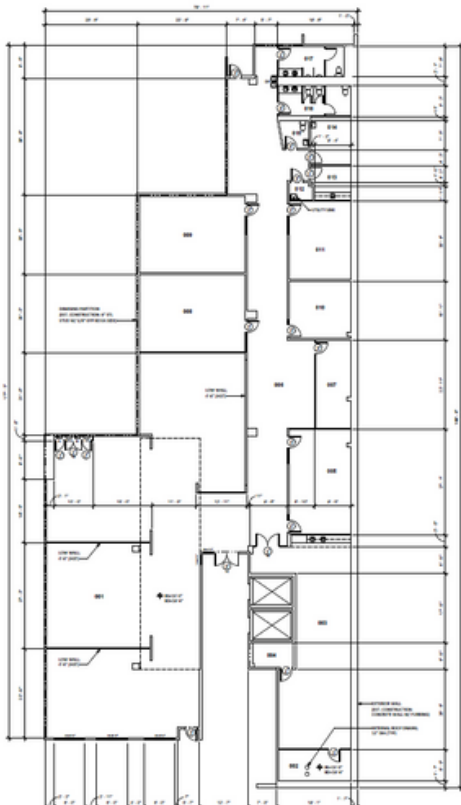
## Available suites

- Suite A-001 - 10,146 SF
- Suite ACH4 - 25,000 SF
- Suite C201 - 2,369 SF



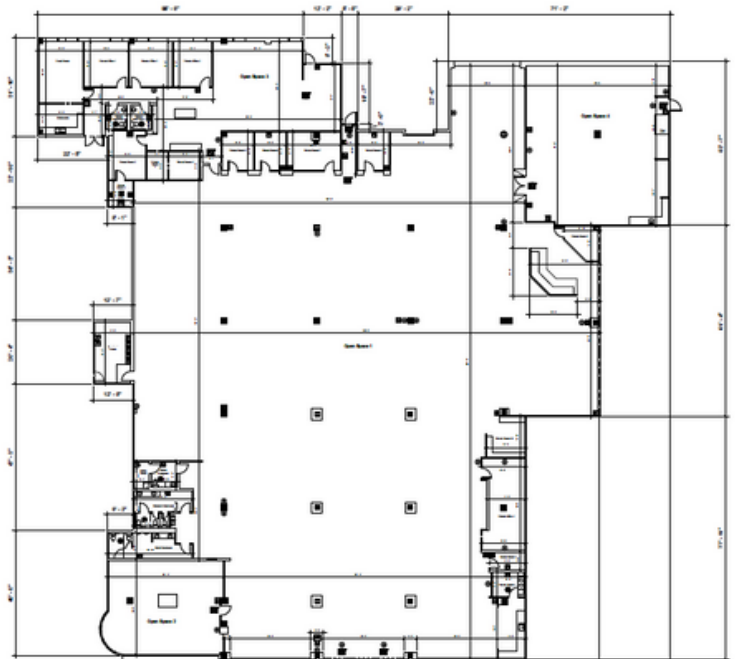
## Site plans

A-001 - 10,146 SF



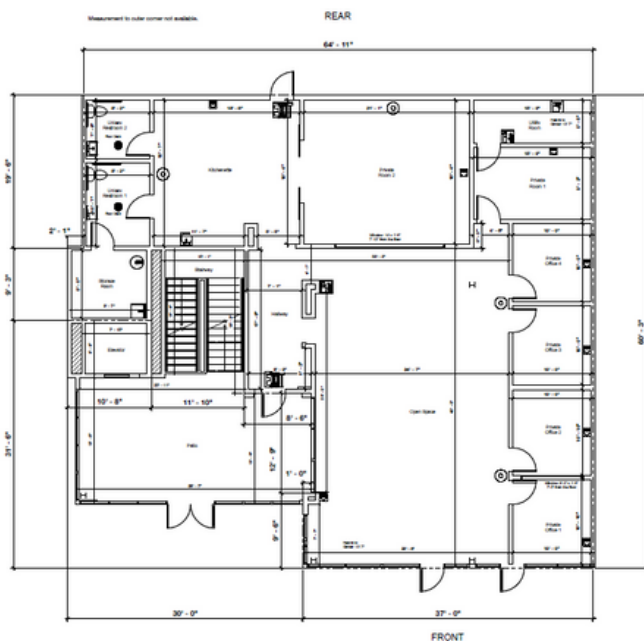
6101 N. Keystone Avenue

ACH4 - 25,000 SF



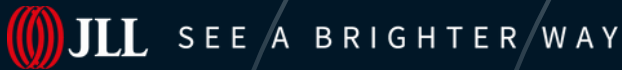
2605 E. 62nd Street

C201 - 2,369 SF



### Highlights

- Current major tenants include: Lowe's, Target, Walgreens, IU Health Physicians, Buffalo Wild Wings, McNamara Florists
- 5 minute drive to Downtown Broad Ripple
- Surrounded by ample restaurants, entertainment and nightlife options
- Brand new AYR luxury apartments located in Glendale Town Center



## About JLL

For over 200 years, JLL (NYSE: JLL), a leading global commercial real estate and investment management company, has helped clients buy, build, occupy, manage and invest in a variety of commercial, industrial, hotel, residential and retail properties. A Fortune 500® company with annual revenue of \$20.9 billion and operations in over 80 countries around the world, our more than 103,000 employees bring the power of a global platform combined with local expertise. Driven by our purpose to shape the future of real estate for a better world, we help our clients, people and communities SEE A BRIGHTER WAY<sup>SM</sup>. JLL is the brand name, and a registered trademark, of Jones Lang LaSalle Incorporated. For further information, visit [jll.com](http://jll.com).

## JLL

### John Vandenbark

Managing Director

[John.Vandenbark@jll.com](mailto:John.Vandenbark@jll.com)

+1 (317) 810-7178

## Kite Realty

### Blake Beaver

Regional Director, Leasing

[bbeaver@kiterealty.com](mailto:bbeaver@kiterealty.com)

+1 (317) 713-5640

Ti debet ipit adipsum voluptatiore nullam idi cupta sitibusdae re naturia quam, quatus. Volori ius nullacc ustiuri tatemposti reperiae riorestiamus evel eaqui con nonsequatur magnimo ma non rem incipsumquam sam qui aut eaquis venis ut unt id que conse aut et parchil inctece preperum invellu ptatis aspis eatas volores totatus dentiae repudan impossunt et etur, cor mos prorem estium in pari aborum eos doluptat laceria quatur, quaturi tibUSDant omnit ab int, utendem andenim aiorpora netur ariosti bearuptatur aut et aliquamus comnian tecture nusamus asi aut quam quatur?