



±44,480 SF FOR SUBLEASE

7503 Las Positas Road

Livermore, CA

Property specifications

- ±44,480 SF available for sublease
- ±2,445 SF of office space, separate warehouse restrooms
- 10 dock-high loading doors
- 1 oversized grade-level loading door (20'x20')
- 31'-33' warehouse clear height
- Typical column spacing: 51' x 49'
- 200 amp, 277/480v electrical service
- Insulated warehouse
- LED warehouse lighting / skylights
- 135' staging area
- Secure yard/perimeter fencing & 2 entrance gates
- Potential for outdoor storage
- Sublease term negotiable (Exp: 7/31/2033)

Call broker for pricing and touring instruction

MATT BRACCO

Senior Managing Director
License #01185434
+1 925 200 3537
matt.bracco@jll.com

PATRICK METZGER

Exec Vice President
License #01888895
+1 510 285 5362
patrickj.metzger@jll.com

CHRIS BURNS

Managing Director
License #01880060
+1 925 389 0292
christopher.burns@jll.com

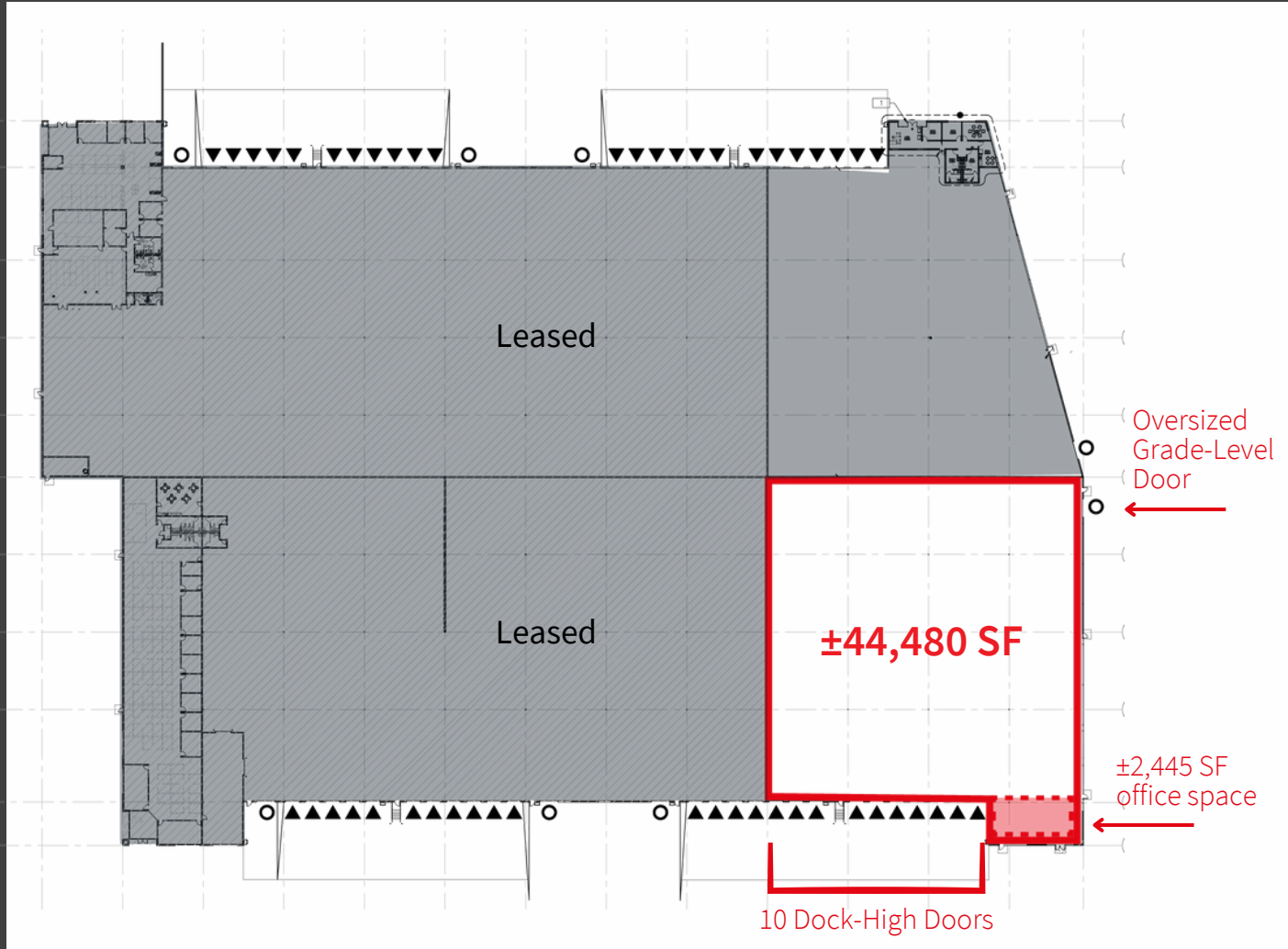
THOMAS MENSENDIEK

Vice President
License #02001433
+1 925 300 6348
t.mensendiek@jll.com



±44,480 SF

Industrial warehouse suite for sublease



Space Highlights

- ±44,480 industrial warehouse
- ±2,445 SF of office space
- Separate warehouse restrooms
- 10 dock-high loading doors
- 1 oversized grade level loading door (20' x 20')
- 31'-33' warehouse clear height
- Typical column spacing: 51' x 49'
- 200a, 277/480v electrical service
- Insulated warehouse
- LED warehouse lighting
- Skylights
- ESFR sprinkler system
- 135' staging area
- Parking ratio: 2 per 1,000 SF
- Secure yard with perimeter fencing and two (2) entrance gates
- Potential for outdoor storage
- Sublease term negotiable (Master Lease expires 7/31/2033)
- Immediate access to I-580 at Greenville Road

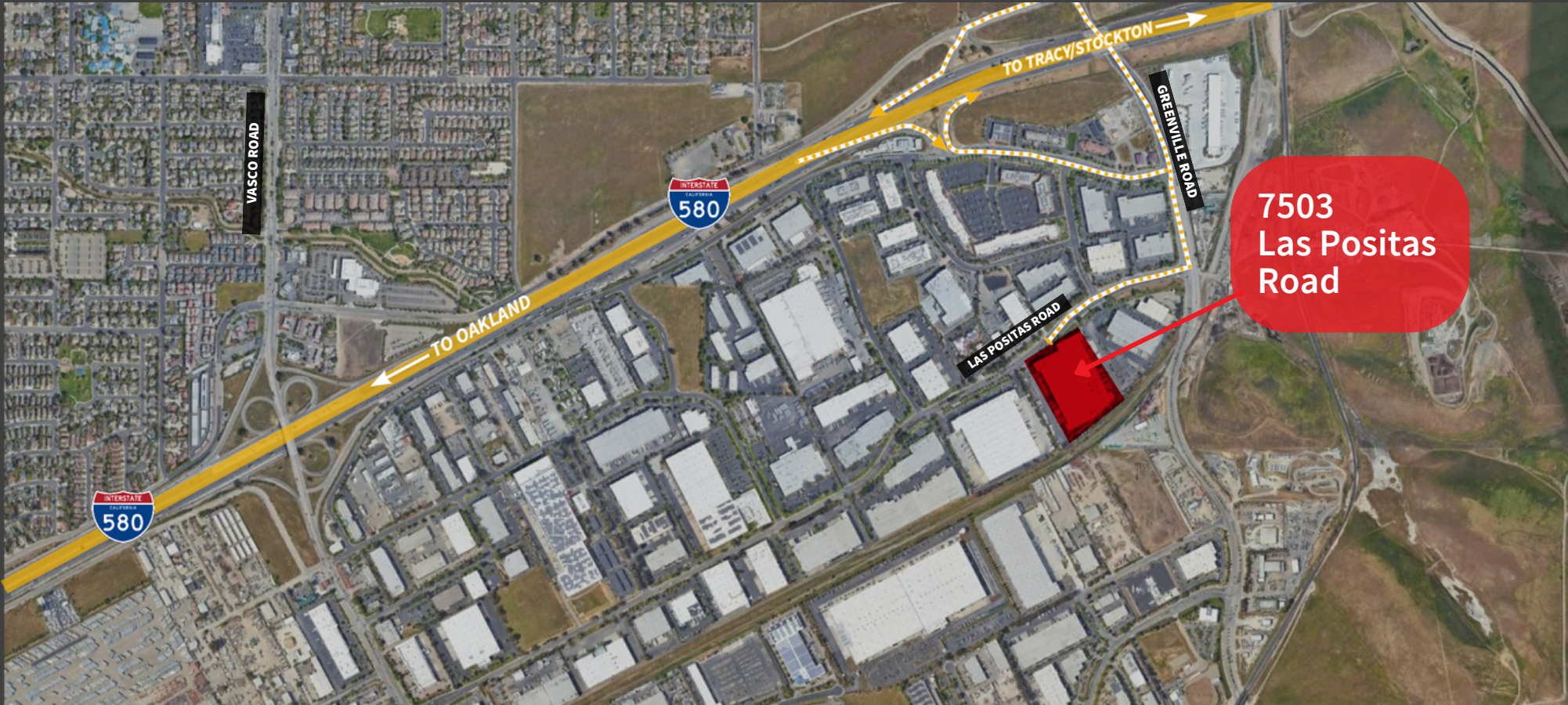
7503 Las Positas Road

Livermore, CA



For Sublease

7503 Las Positas Road | Livermore



JLL

MATT BRACCO

Senior Managing Director
License #01185434
+1 925 200 3537
matt.bracco@jll.com

CHRIS BURNS

Managing Director
License #01880060
+1 925 389 0292
christopher.burns@jll.com

PATRICK METZGER

Exec Vice President
License #01888895
+1 510 285 5362
patrickj.metzger@jll.com

THOMAS MENSENDIEK

Vice President
License #02001433
+1 925 300 6348
t.mensendiek@jll.com

Although information has been obtained from sources deemed reliable, JLL does not make any guarantees, warranties or representations, express or implied, as to the completeness or accuracy as to the information contained herein. Any projections, opinions, assumptions or estimates used are for example only. There may be differences between projected and actual results, and those differences may be material. JLL does not accept any liability for any loss or damage suffered by any party resulting from reliance on this information. If the recipient of this information has signed a confidentiality agreement with JLL regarding this matter, this information is subject to the terms of that agreement. ©2024. Jones Lang LaSalle IP, Inc. All rights reserved.