



 **JLL** SEE A BRIGHTER WAY

# One Monarch Sublease

12550 SE 93rd Ave

**1,659 RSF** Suite 220

Expires 02/28/2027

**Call for Rates**

[jll.com/portland](http://jll.com/portland)

Jones Lang LaSalle Brokerage, Inc.



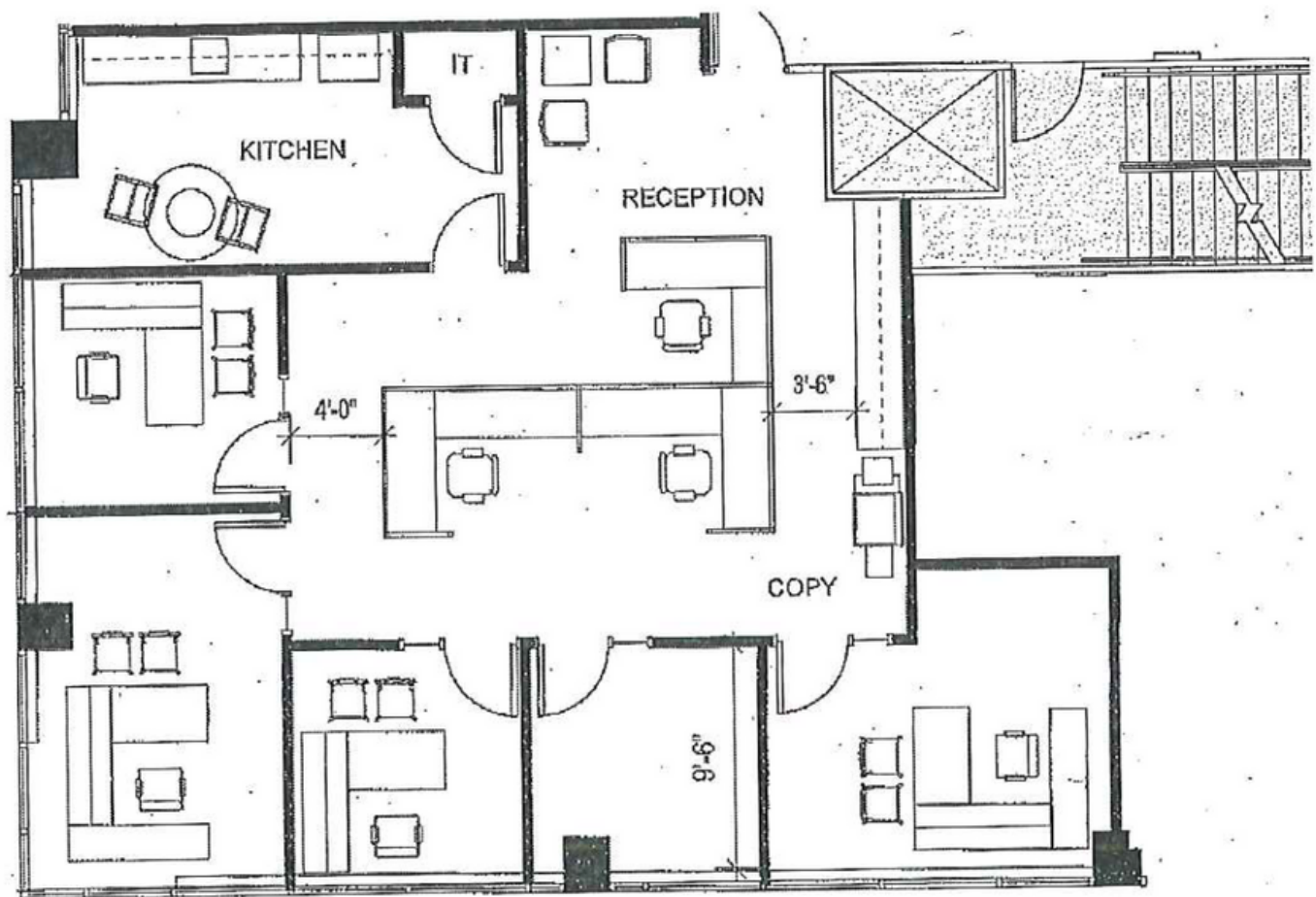
## Building Highlights

- Recent common area updates
- 3.5/1,000 SF parking
- Direct visibility from I-205
- Surrounded by amenities and lodging options



## Space Available for Sublease

Suite 220  
**1,659 SF**



Furniture available

Existing professional services office build out

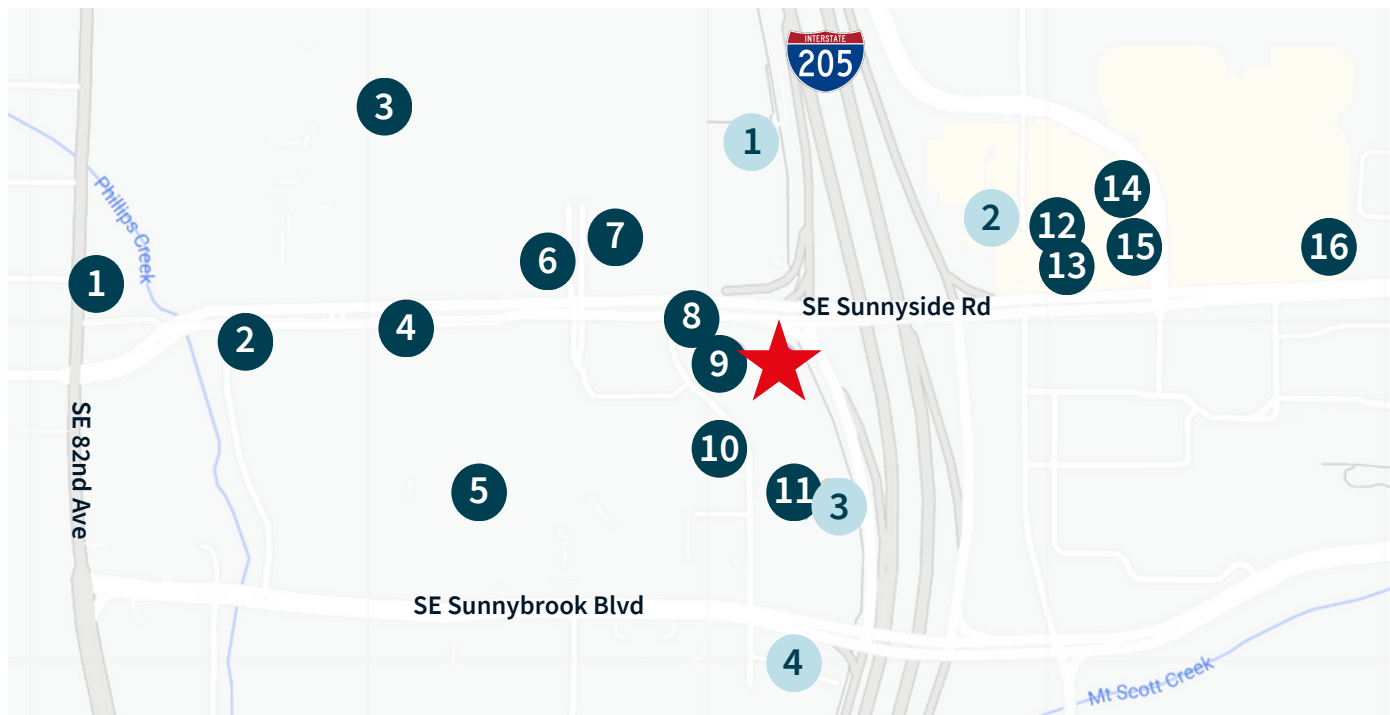
# Neighborhood Amenities

## Food and Beverage

- |                            |                               |
|----------------------------|-------------------------------|
| 1. Nori Sushi              | 9. Red Robin                  |
| 2. Stanford's Clackamas    | 10. The Old Spaghetti Factory |
| 3. The Cheesecake Factory  | 11. de Fuego Grille           |
| 4. Olive Garden            | 12. Pho Sen 2                 |
| 5. Great Harvest Bread Co. | 13. Dave's Hot Chicken        |
| 6. Oswego Grill            | 14. Nothing Bundt Cakes       |
| 7. Claim Jumper Steakhouse | 15. Starbucks                 |
| 8. Chick-fil-A             | 16. Laughing Planet           |

## Lodging

1. Residence Inn by Marriott
2. Quality Inn & Suites
3. Monarch Hotel & Conference Center
4. Courtyard by Marriott



## FOR LEASING INFORMATION:

### Andrew Rosengarten

Licensed in OR

[andrew.rosengarten@jll.com](mailto:andrew.rosengarten@jll.com)

+1 503 972 8097

### Annalore Rodman

Licensed in OR

[annalore.rodman@jll.com](mailto:annalore.rodman@jll.com)

+1 503 546 3671

