

308 LIVINGSTON STREET

Between Nevins & Bond Streets

DOWNTOWN **BROOKLYN** RETAIL OPPORTUNITY



Prime retail space for lease at the base of a 160-unit residential building, joining recently signed **Tend Dental** and **Pups Pet Club**. Adjacent to **Chelsea Piers Fitness** and **Devocion**.

RYAN P. CONDREN
+1 212 220 4117 | ryan.condren@jll.com

GEORGE DANUT
+1 212 220 4121 | george.danut@jll.com





308 LIVINGSTON STREET

SIZE

Ground Floor: 2,155 sf
Frontage: 25'

POSSESSION

Immediate

CEILING HEIGHT

Ground Floor: 15'

COMMENTS

- Over 14,000 new residential units within a 1 mile radius
- One block from Fulton Street Mall
- Close proximity to Atlantic Terminal Mall, BAM Cultural District and Long Island University Brooklyn Campus
- One block away from two subway stations servicing the 2 3 4 5 B Q R lines

NEIGHBORING RETAIL



CHELSEA PIERS

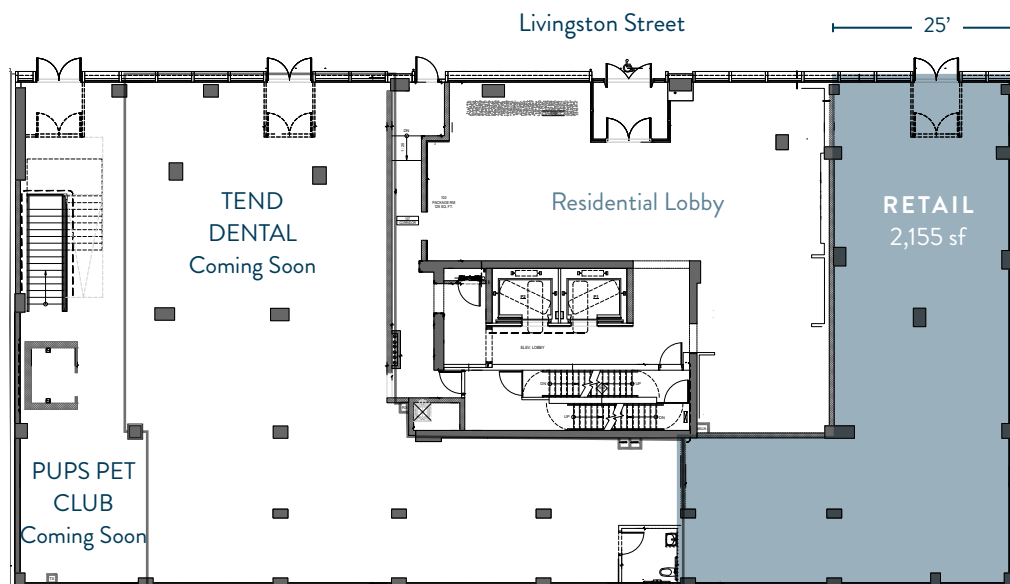
WHOLE FOODS
MARKET

BLICK
art materials

BAM

ACE HOTEL

GROUND FLOOR



RYAN P. CONDREN

+1 212 220 4117 | ryan.condren@jll.com

GEORGE DANUT

+1 212 220 4121 | george.danut@jll.com





308 LIVINGSTON STREET



RYAN P. CONDREN
+1 212 220 4117 | ryan.condren@jll.com

GEORGE DANUT
+1 212 220 4121 | george.danut@jll.com



