 **JLL** SEE A BRIGHTER WAY


For lease


One Batterymarch Park
Quincy, Massachusetts
±50,236 RSF of Office Space Available


Property features


Batterymarch Park is a four-building, 50-acre first-class office park located at the strategic intersection of the Southeast Expressway, Routes 3 and 128 in Quincy, Massachusetts. The park is owned and managed by the National Fire Protection Association, which is headquartered at 1 Batterymarch Park. The park is only 15 minutes from Boston, with free parking and shuttle service to and from the Quincy Center MBTA Station and features panoramic views of downtown Boston, Quincy Bay and the Blue Hills.

Park amenities


Fitness center

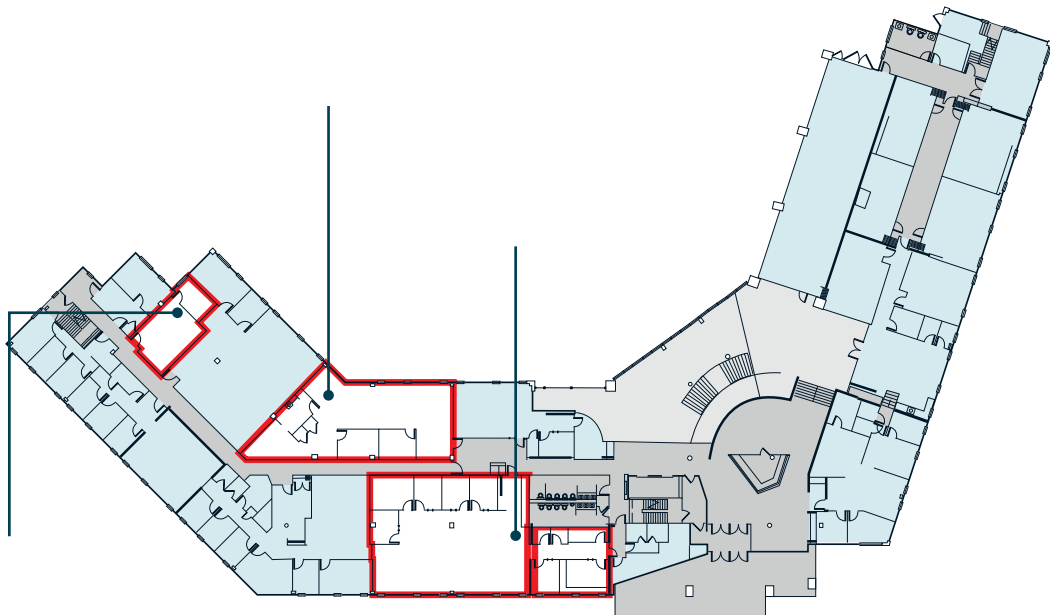

Conference center


Cafe

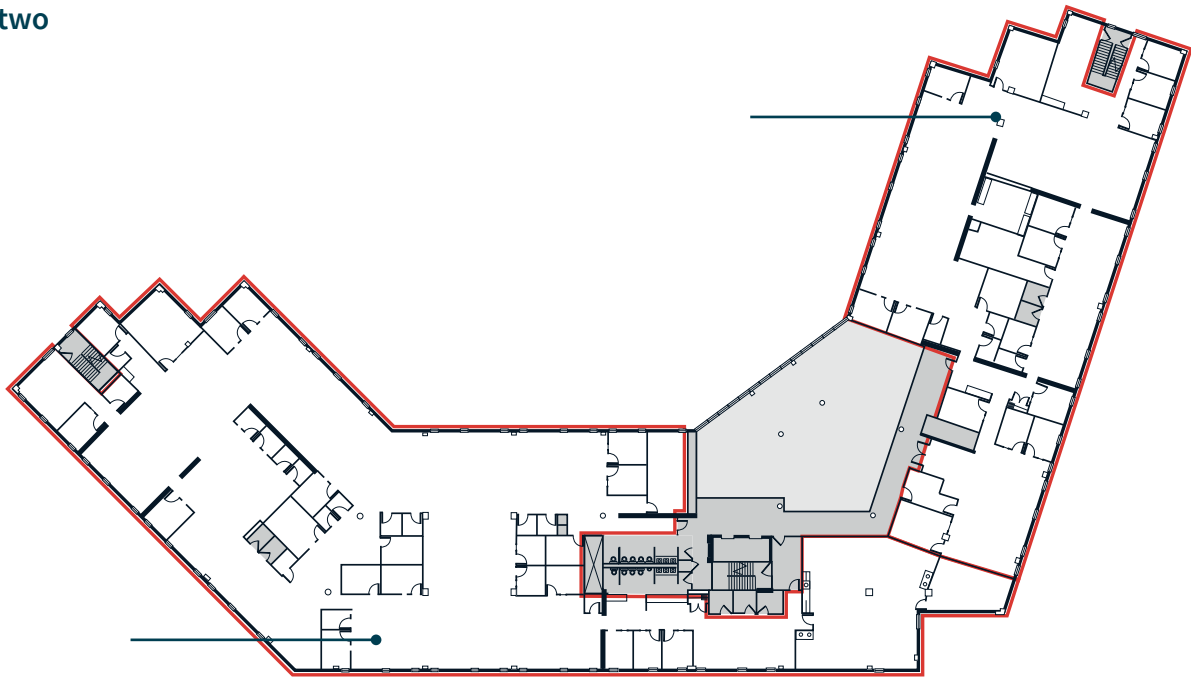

Shuttle

Total SF	152,096 SF
Year built	1981
Available space	1st floor: 665 SF 1st floor: 2,277 SF 1st floor: 2,957 - 3,764 SF 2nd floor: 34,564 SF 3rd floor: 1,197 3rd floor: 7,770 SF
Parking	3.0 per 1,000 SF

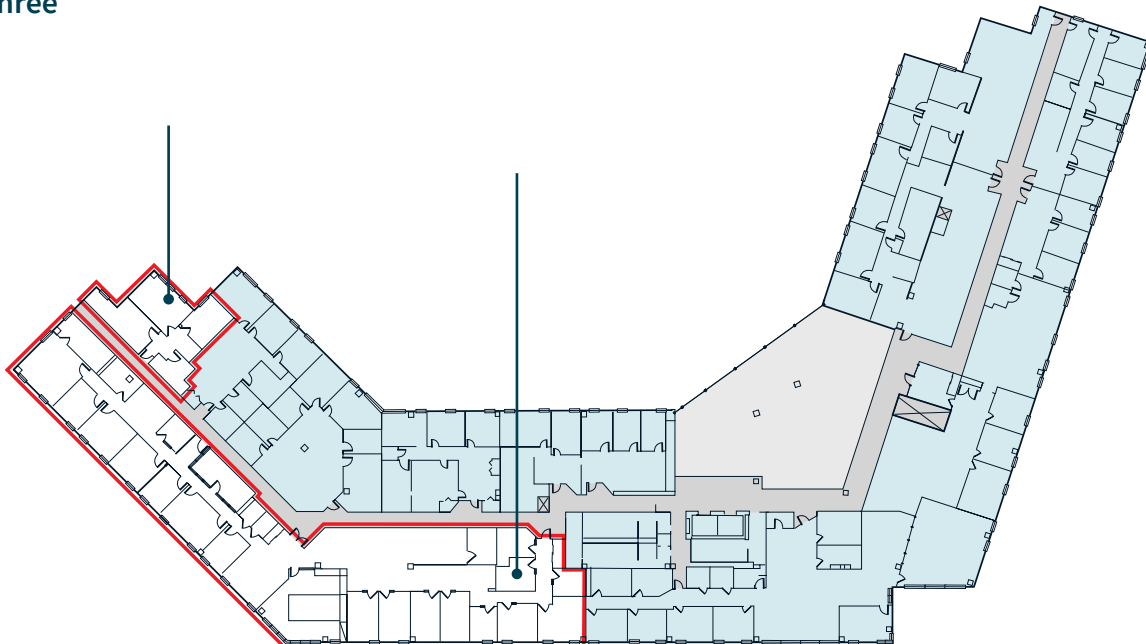
Floor one



Floor two



Floor three





JLL

Nat Kessler
Managing Director
 nat.kessler@jll.com
 +1 617 686 8381

Sean Lynch
Managing Director
 sean.lynch@jll.com
 +1 617 316 6488

Michael Keenan
Assistant Vice President
 michael.keenan@jll.com
 +1 617 316 6424

About JLL

For over 200 years, JLL (NYSE: JLL), a leading global commercial real estate and investment management company, has helped clients buy, build, occupy, manage and invest in a variety of commercial, industrial, hotel, residential and retail properties. A Fortune 500® company with annual revenue of \$20.9 billion and operations in over 80 countries around the world, our more than 105,000 employees bring the power of a global platform combined with local expertise. Driven by our purpose to shape the future of real estate for a better world, we help our clients, people and communities SEE A BRIGHTER WAY™. JLL is the brand name, and a registered trademark, of Jones Lang LaSalle Incorporated. For further information, visit jll.com.