 **JLL** SEE A BRIGHTER WAY

For lease

3 Batterymarch Park
Quincy, Massachusetts
±11,347 SF of Office Space Available

Property features

Batterymarch Park is a four-building, 50-acre first class office park located at the strategic intersection of the Southeast Expressway, Routes 3 and 128 in Quincy, Massachusetts. The park is owned and managed by the National Fire Protection Association, which is headquartered at 1 Batterymarch Park. The park is only 15 minutes from Boston, with free parking and shuttle service to and from the Quincy Center MBTA Station, and features panoramic views of downtown Boston, Quincy Bay and the Blue Hills.

Total SF	106,567 SF of Class A office space over five floors with 37 underground parking spaces
----------	--

Year built	1987
------------	------

Available space	1st floor: 4,136 SF 7,211 SF
-----------------	---------------------------------

Parking	3.0 per 1,000 SF
---------	------------------

Park amenities



Fitness center



Conference center

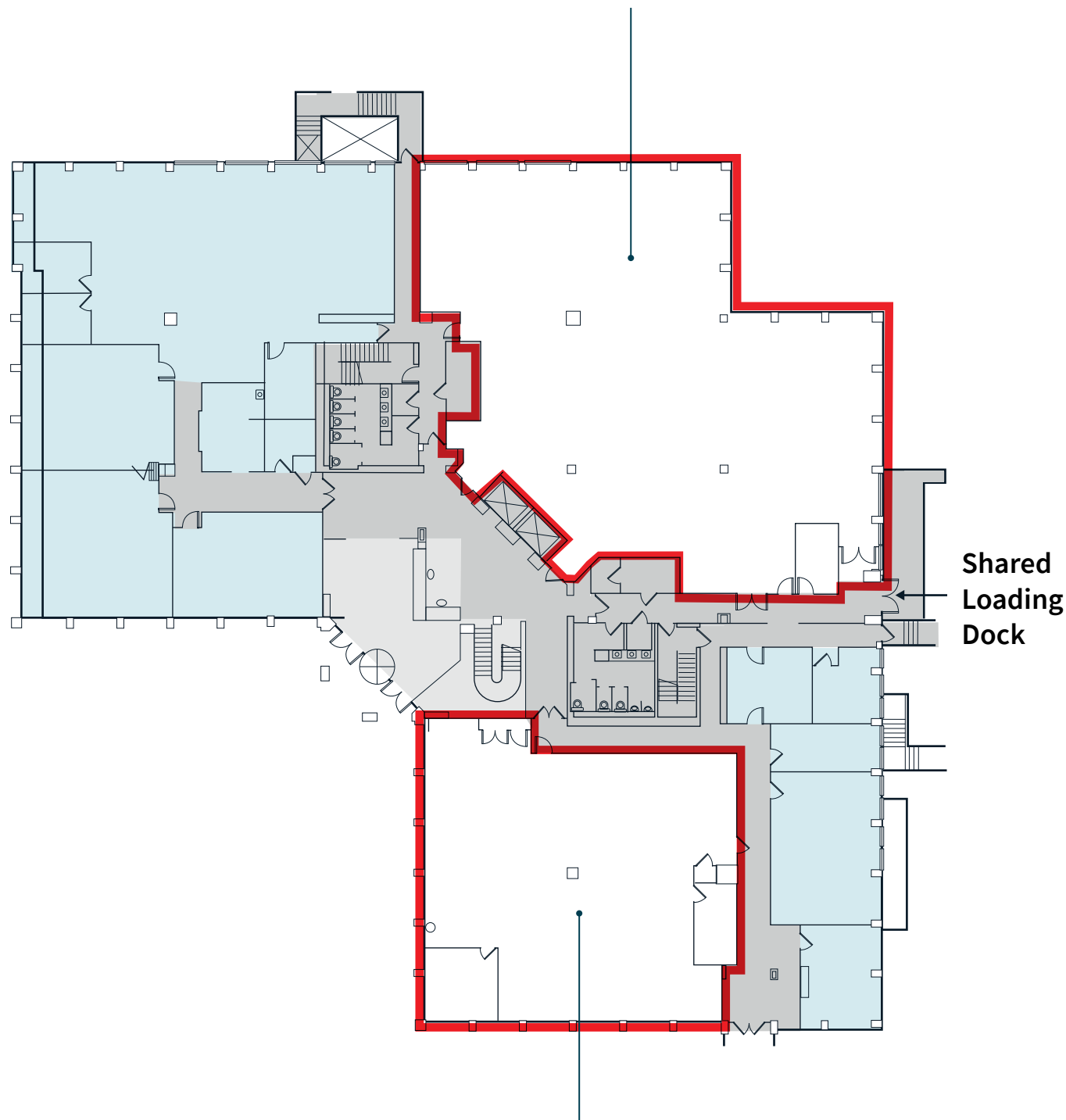


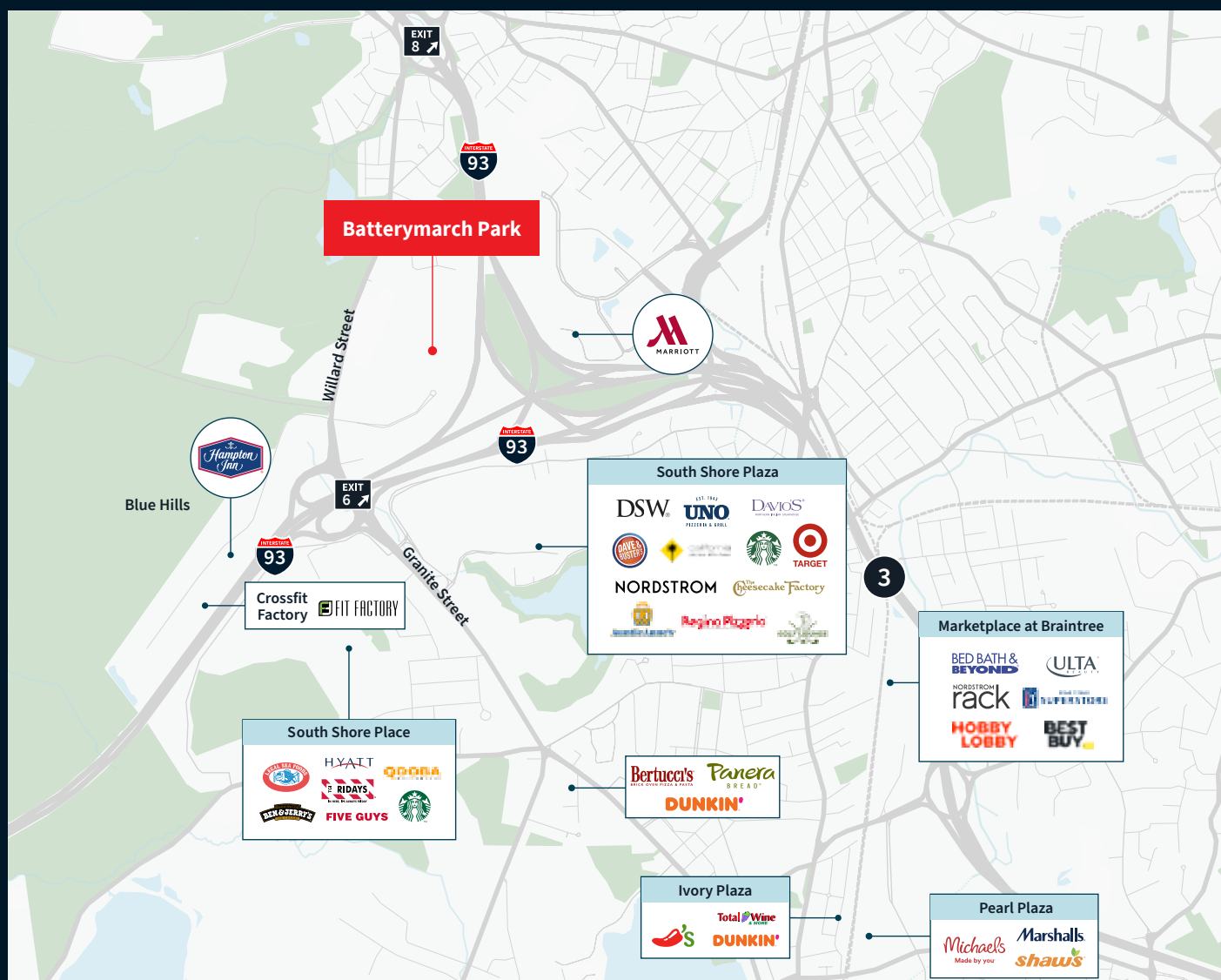
Cafe



Shuttle

Floor one





JLL

Nat Kessler

Managing Director
nat.kessler@jll.com
+1 617 686 8381

Sean Lynch

Managing Director
sean.lynch@jll.com
+1 617 316 6488

Michael Keenan

Assistant Vice President
michael.keenan@jll.com
+1 617 316 6424

About JLL

For over 200 years, JLL (NYSE: JLL), a leading global commercial real estate and investment management company, has helped clients buy, build, occupy, manage and invest in a variety of commercial, industrial, hotel, residential and retail properties. A Fortune 500® company with annual revenue of \$20.9 billion and operations in over 80 countries around the world, our more than 105,000 employees bring the power of a global platform combined with local expertise. Driven by our purpose to shape the future of real estate for a better world, we help our clients, people and communities SEE A BRIGHTER WAY™. JLL is the brand name, and a registered trademark, of Jones Lang LaSalle Incorporated. For further information, visit jll.com.