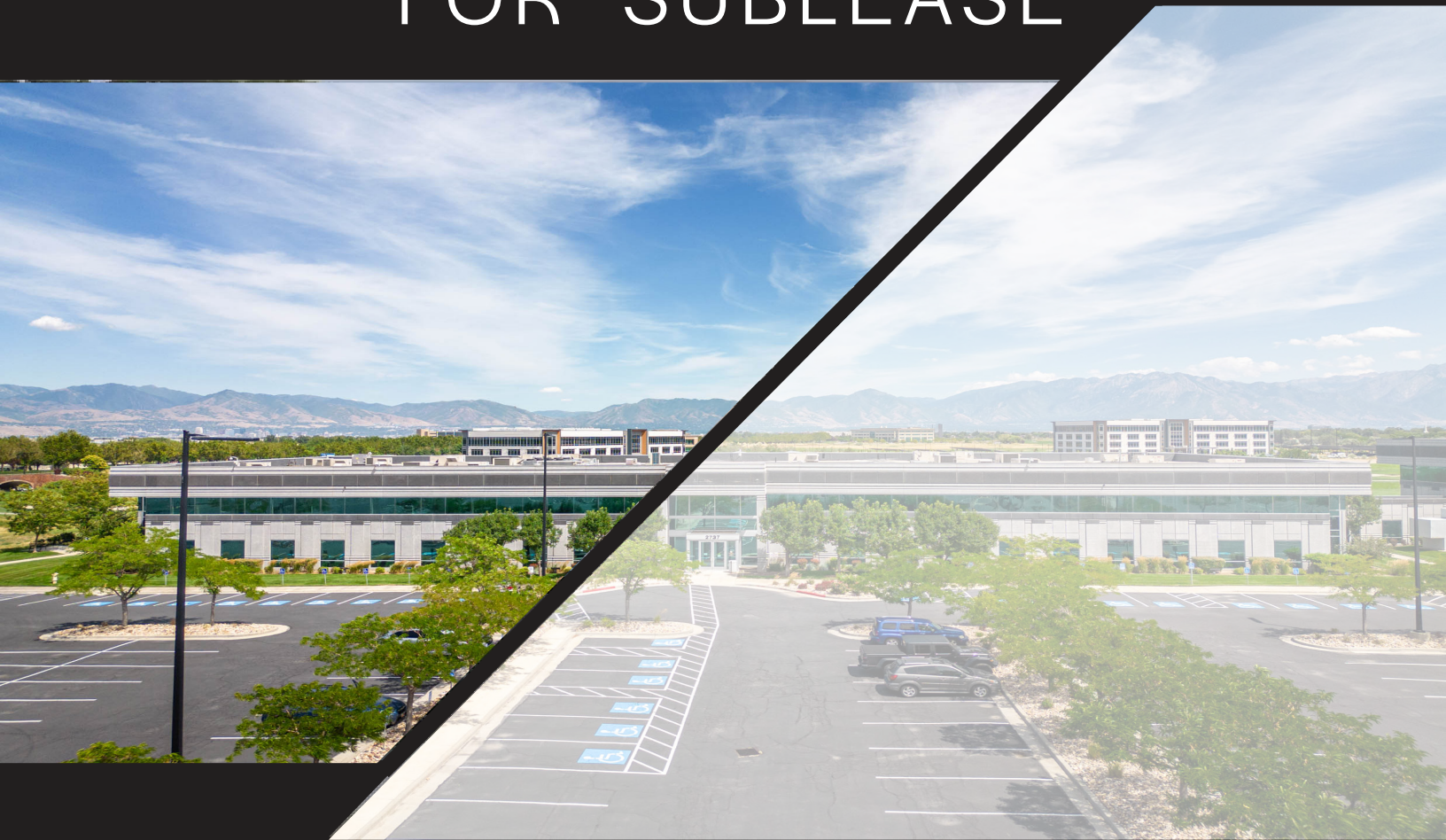




FOR SUBLEASE





## PROPERTY SPECIFICATIONS

70,363 RSF - Full Building

- each floor approx. 35,000

Available Now

Term: Through 3/31/2028

Rate: 14.00 NNN

Parking: 7/1,000

Ceiling Height: 14ft

Brand New Build-Out

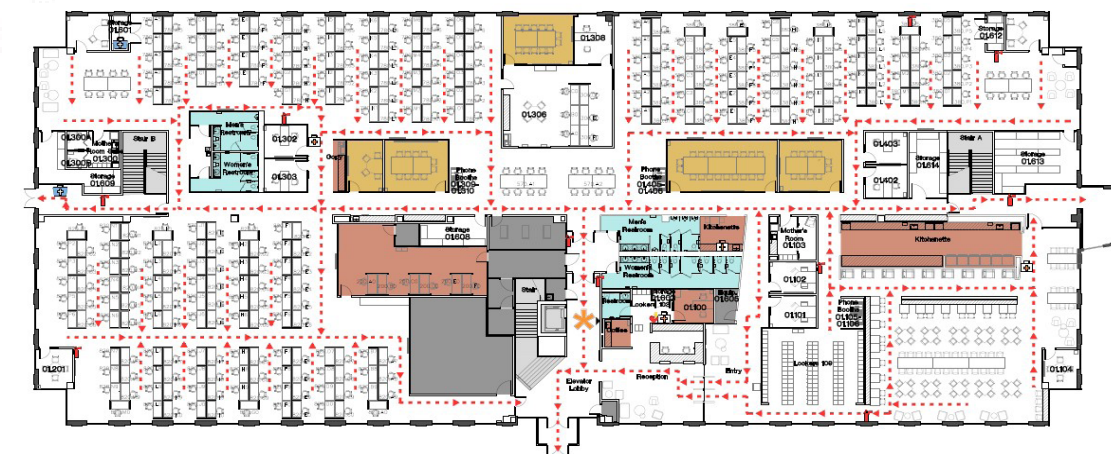
Furniture Included

Quick Access to SR 201

Short Distance to an Abundance of Amenities

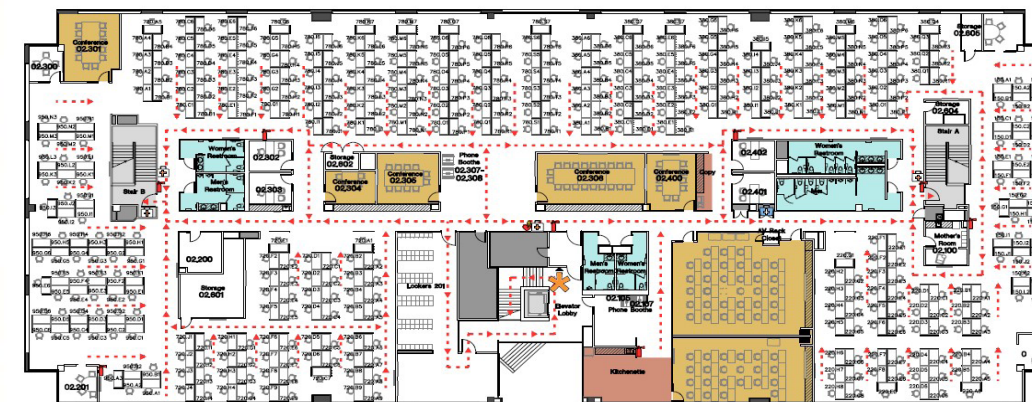


**FLOOR 1**



**FLOOR PLANS**

**FLOOR 2**





# AREA MAP



## DRIVE TIMES

6 minutes to Interstate 80

7 minutes to Interstate 15

8 minutes to SLC Airport







FOR MORE LEASING INFORMATION,  
PLEASE CONTACT:

**DAVID NIXON**  
+1 801 456 9518  
[david.nixon@jll.com](mailto:david.nixon@jll.com)