

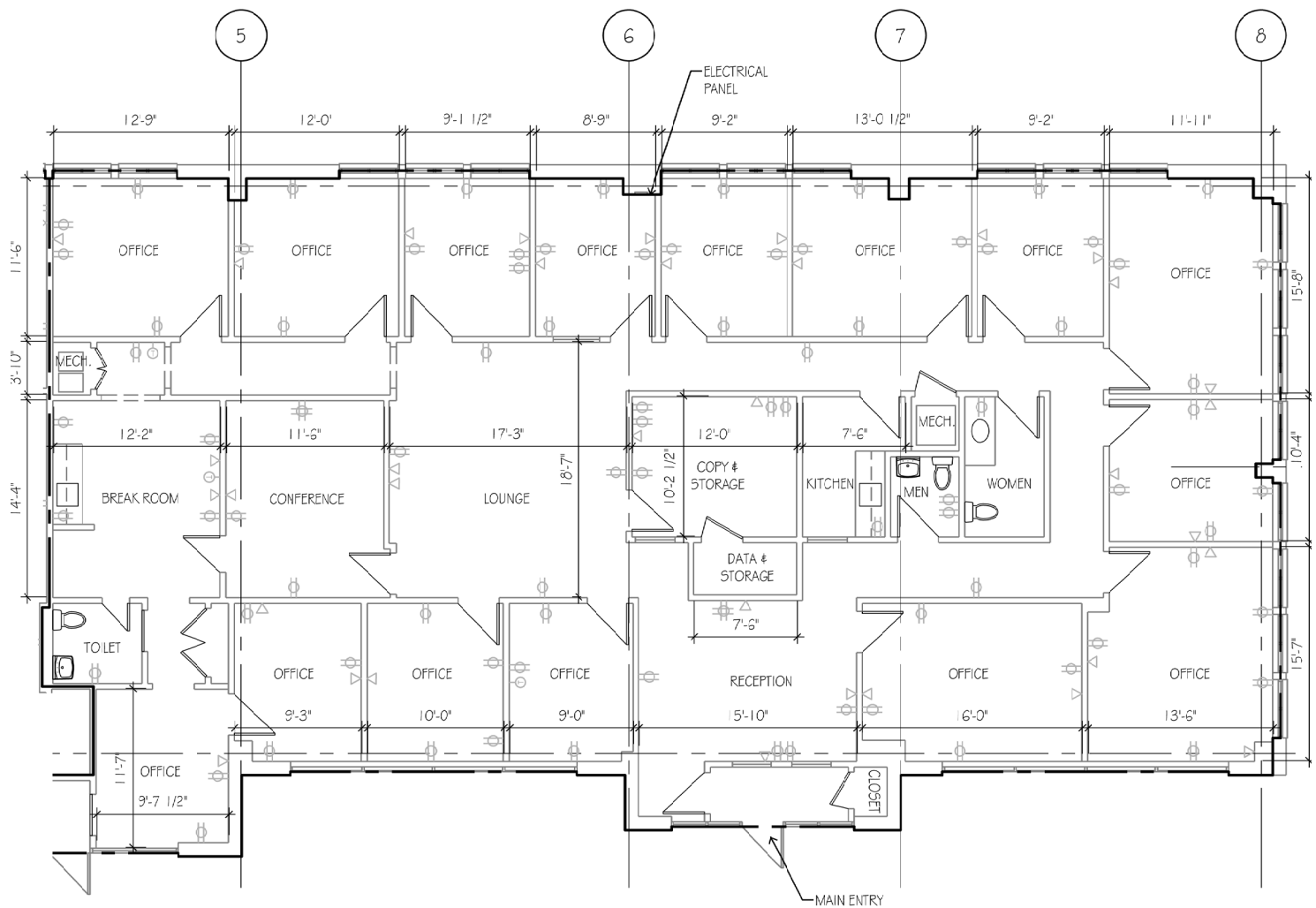
MODERN WEALTH MANAGEMENT PLAZA
13600 W 95TH STREET
LENEXA, KS 66215
4,042 SF AVAILABLE NOW



Property Highlights

- **Lease Rate: \$16.50 PSF net of janitorial and electrical**
- Tenant improvements negotiable
- New outdoor break area
- Immediate access to Interstate 35
- Minutes from dining and shopping along 95th Street

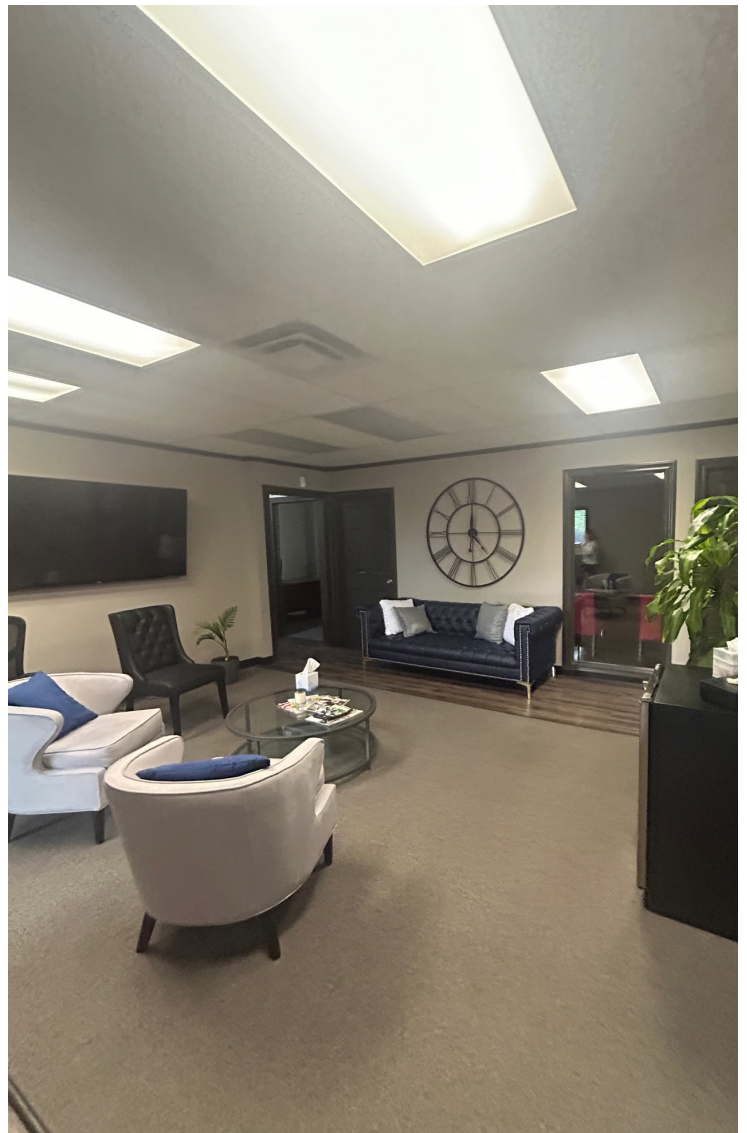
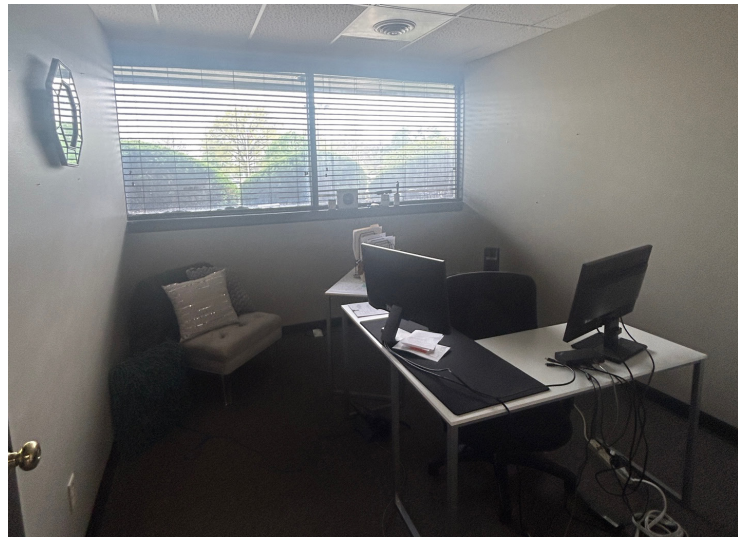
13600 W. 95th Street
4,042 RSF Available Now

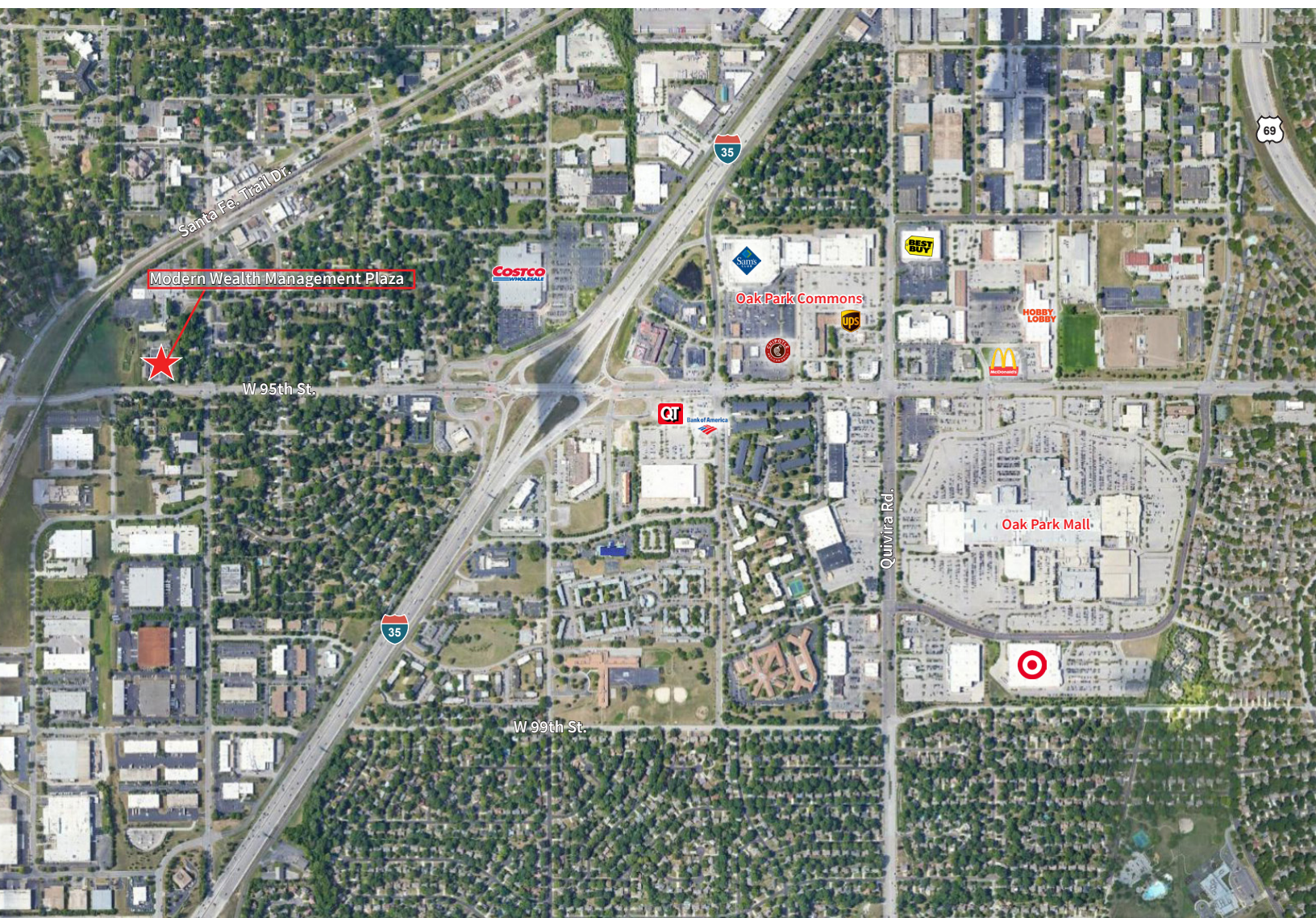


For more information, contact:

RJ Trowbridge
+1 913 469 4637
rj.trowbridge@jll.com

Avery Comeau
+1 913 927 9252
avery.comeau@jll.com





For more information, contact:

RJ Trowbridge
+1 913 469 4637
rj.trowbridge@jll.com

Avery Comeau
+1 913 927 9252
avery.comeau@jll.com