



JOSHUA GREEN
BUILDING

PERSONALITY —MULTIPLIED.

At the crossroads of the retail and central business districts stands a Class A landmark reimagined to meet the demands of the modern office tenant—the Joshua Green Building.

10

stories in the core
of downtown Seattle



100+

years old, earning its
status as an iconic asset



100,000

square feet of historic,
reinvented office space

From the intricate terra cotta exterior to the modern ambiance of Bourbon Steak, the Joshua Green Building strikes a dramatic first impression at street level—inspiring a bold start to every workday.



BUILDING CHARACTER

8,000 SF full-floor plates

Large operable windows that flood the space with natural light

On-site property manager and 24-hour security

Bike storage and shower facility

Rooftop deck with city and water views

Unique, energy-efficient systems





APPROACHABLE AND ACCESSIBLE

Walk to any of Seattle's main attractions: Pike Place Market, Westlake Center and Pacific Place, Benaroya Hall, Washington State Convention Center, Seattle Art Museum and more. Everything is close:



03

on-site dining options, including Bourbon Steak (by Michael Mina), Veggie Grill and Potbelly Sandwich Shop



10

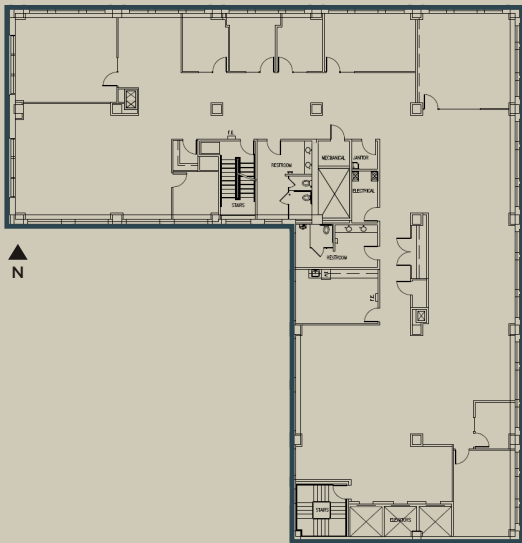
bus lines within walking distance to/from the building



01

block from the light rail and monorail at Westlake Station

REPRESENTATIVE FLOOR PLAN



1425 Fourth Avenue · Seattle, Washington · 98101



URBAN
RENAISSANCE
GROUP

Cleita Harvey
Tim Jones

+1 206 607 1794
+1 206 971 7011

cleita.harvey@jll.com
tim.jones@jll.com



90+

LUNCH SPOTS
IN A 4 BLOCK
RADIUS

99

WALK SCORE

100

TRANSIT SCORE

©2024 Jones Lang LaSalle IP, Inc. All rights reserved. All information contained herein is from sources deemed reliable; however, no representation or warranty is made to the accuracy thereof. Jones Lang LaSalle Brokerage, Inc.

