



For sublease

Rio San Diego Plaza
8954 Rio San Diego Drive

Up to 110,000 RSF available in Mission Valley



Jones Lang LaSalle Brokerage, Inc. RE license #01856260

Master Lease Expires 4/30/2030

**Divisible on a suite by suite and
floor by floor basis**

Fully Furnished

Cat 5 & 6 wired

Sublease Availability | 8954 Rio San Diego Drive

Suite	RSF	Asking Rate	Condition
100	7,772	\$2.70 +E	Prominent Ground Floor location.
200*	16,898	\$2.70 +E	Mostly open plan with exterior offices and large conference rooms.
201*	15,577	\$2.70 +E	Mostly open plan with mix of interior and exterior offices and large conference rooms.
Suites 200/201 are contiguous for a full floor - 32,475 RSF.			
300	33,537	\$2.70 +E	Full floor. 90% open buildout.
401	6,956	\$2.70 +E	Mostly open plan with mix of interior and exterior offices .
600	29,161	\$2.70 +E	Upgraded finishes, private balcony. Mostly open plan with mix of interior and exterior offices.

Existing FF&E can be made available.



Shawn Lorentzen

Managing Director

+1 858 410 1222

shawn.lorentzen@jll.com

RE license #01429583

Bess Wakeman

Executive Vice President

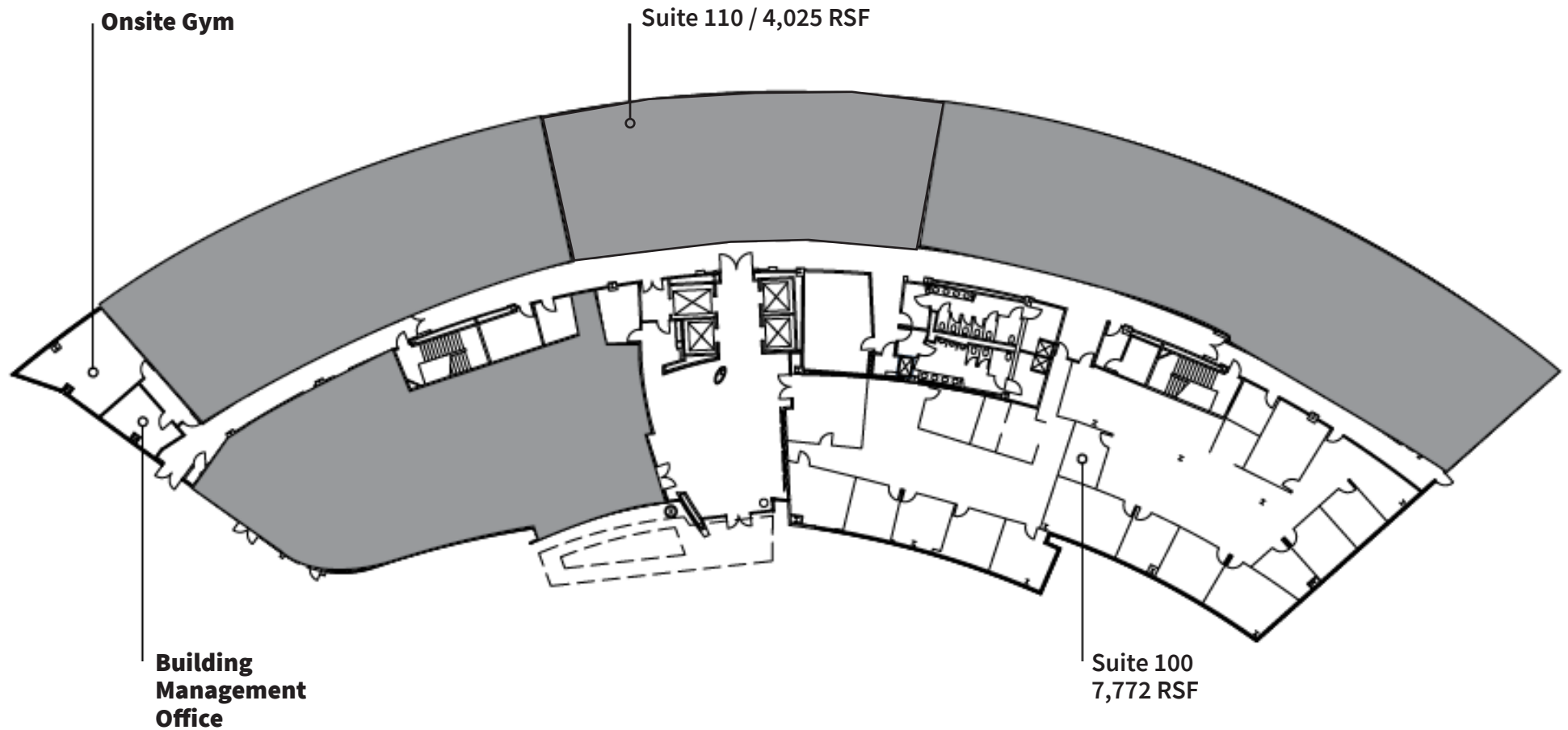
+1 858 410 1245

bess.wakeman@jll.com

RE license #01177659



Floor Plan - 1st floor | 8954 Rio San Diego Drive

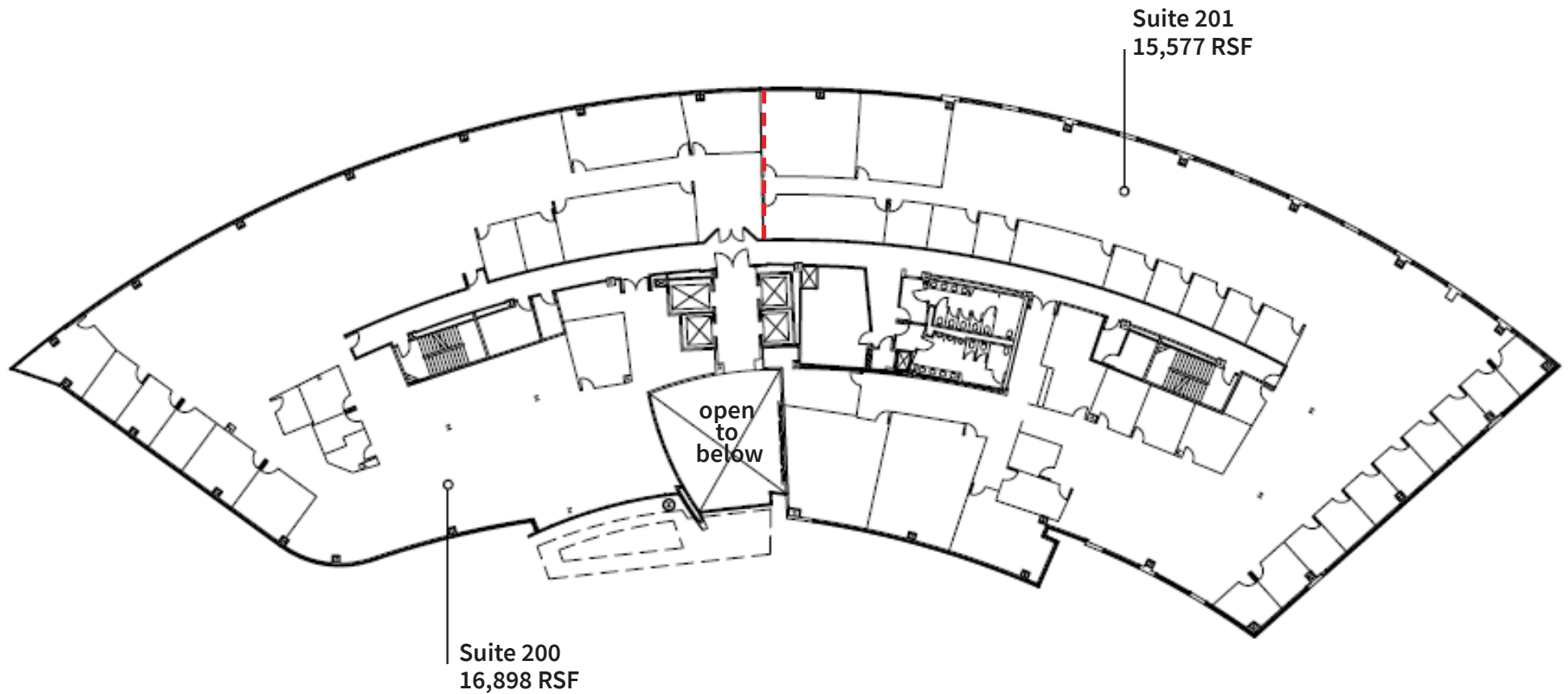


Shawn Lorentzen
Managing Director
+1 858 410 1222
shawn.lorentzen@jll.com
RE license #01429583

Bess Wakeman
Executive Vice President
+1 858 410 1245
bess.wakeman@jll.com
RE license #01177659

Floor Plan - 2nd floor | 8954 Rio San Diego Drive

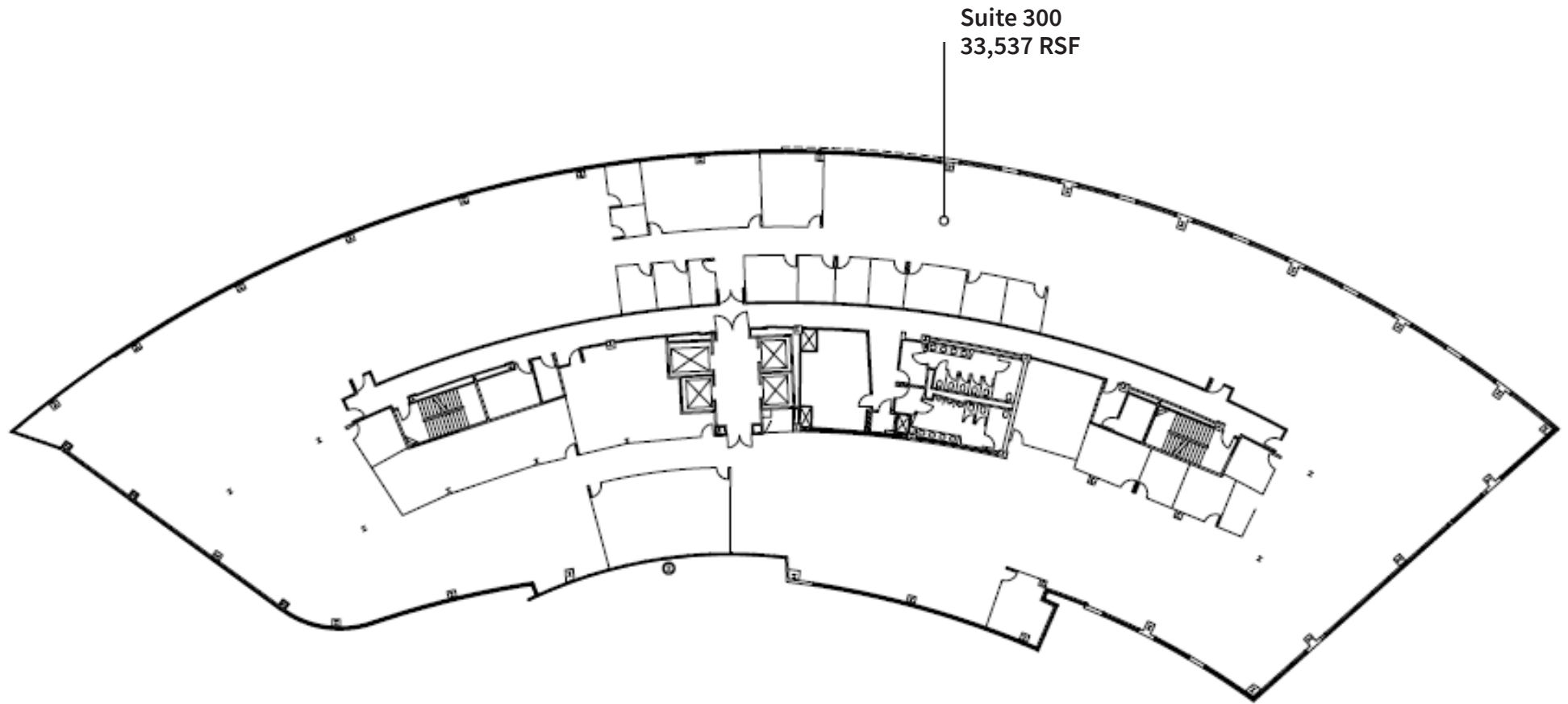
Suites 200/201 are contiguous for a full floor - 32,475 RSF



Shawn Lorentzen
Managing Director
+1 858 410 1222
shawn.lorentzen@jll.com
RE license #01429583

Bess Wakeman
Executive Vice President
+1 858 410 1245
bess.wakeman@jll.com
RE license #01177659

Floor Plan - 3rd floor | 8954 Rio San Diego Drive



Shawn Lorentzen

Managing Director

+1 858 410 1222

shawn.lorentzen@jll.com

RE license #01429583

Bess Wakeman

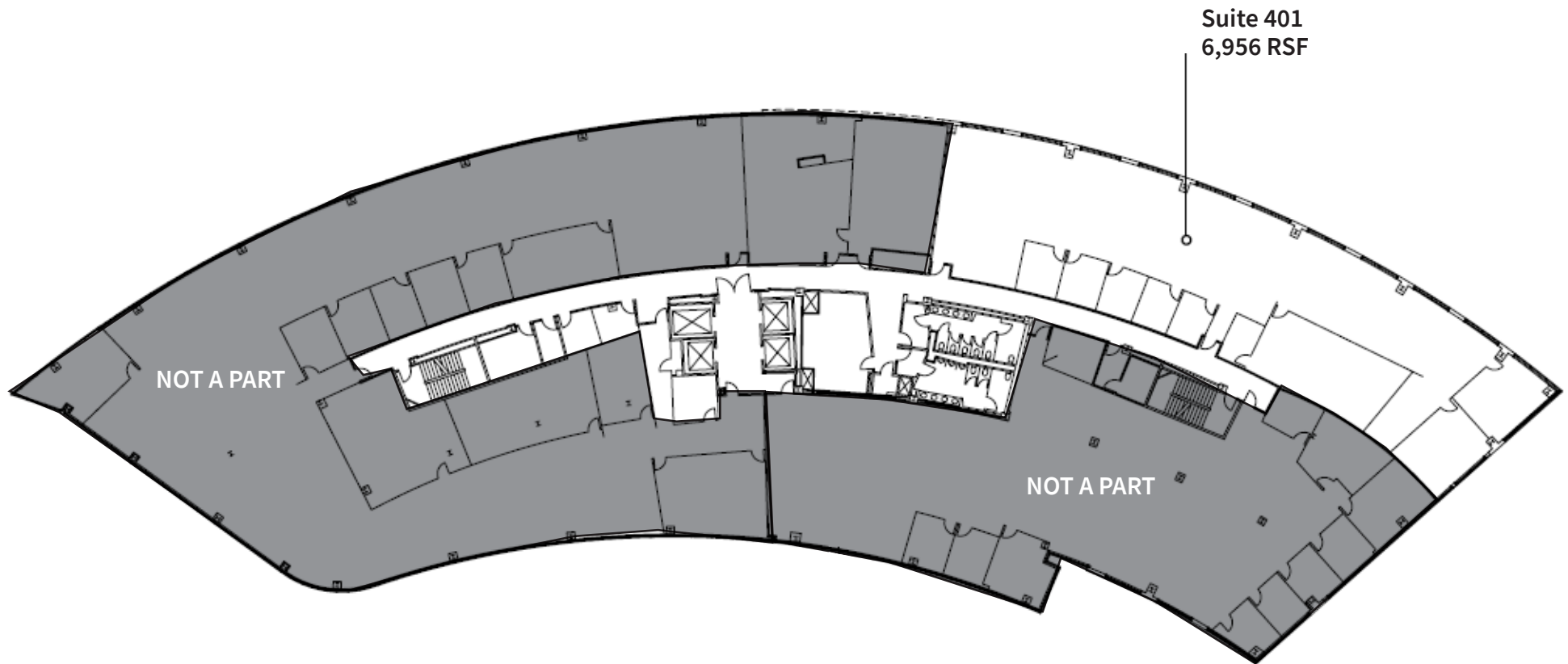
Executive Vice President

+1 858 410 1245

bess.wakeman@jll.com

RE license #01177659

Floor Plan - 4th floor | 8954 Rio San Diego Drive



Shawn Lorentzen

Managing Director

+1 858 410 1222

shawn.lorentzen@jll.com

RE license #01429583

Bess Wakeman

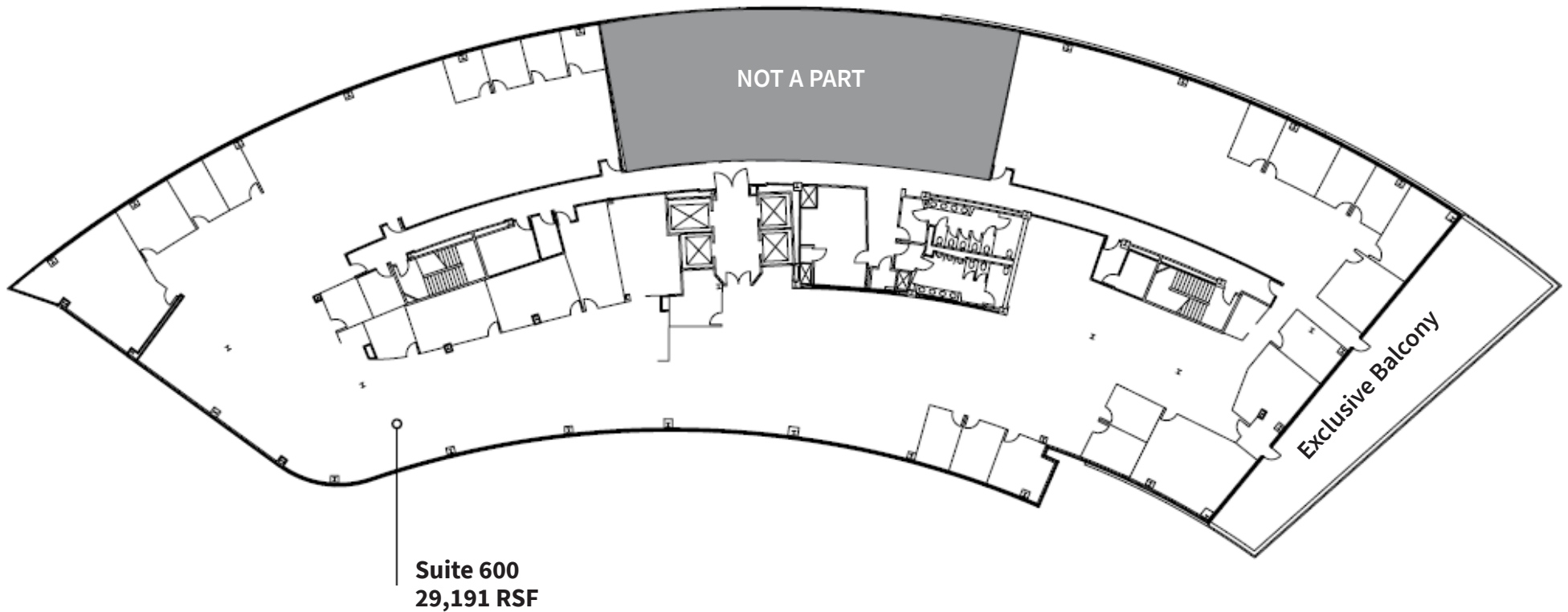
Executive Vice President

+1 858 410 1245

bess.wakeman@jll.com

RE license #01177659

Floor Plan - 6th floor | 8954 Rio San Diego Drive



Shawn Lorentzen

Managing Director

+1 858 410 1222

shawn.lorentzen@jll.com

RE license #01429583

Bess Wakeman

Executive Vice President

+1 858 410 1245

bess.wakeman@jll.com

RE license #01177659

Onsite amenities | 8954 Rio San Diego Drive

Fitness facility

Showers

Property Management

Above standard parking ratio:
4.2/1000 RSF

LEED Certified Silver



Shawn Lorentzen
Managing Director
+1 858 410 1222
shawn.lorentzen@jll.com
RE license #01429583

Bess Wakeman
Executive Vice President
+1 858 410 1245
bess.wakeman@jll.com
RE license #01177659



Snapdragon Stadium

Fenton Marketplace Shopping and Dining

Rio San Diego Plaza

Mission Valley East Regional Mall



For more information contact:



Shawn Lorentzen

Managing Director

+1 858 410 1222

shawn.lorentzen@jll.com

RE license #01429583

Bess Wakeman

Executive Vice President

+1 858 410 1245

bess.wakeman@jll.com

RE license #01177659

Although information has been obtained from sources deemed reliable, neither Owner nor JLL makes any guarantees, warranties or representations, express or implied, as to the completeness or accuracy as to the information contained herein. Any projections, opinions, assumptions or estimates used are for example only. There may be differences between projected and actual results, and those differences may be material. The Property may be withdrawn without notice. Neither Owner nor JLL accepts any liability for any loss or damage suffered by any party resulting from reliance on this information. If the recipient of this information has signed a confidentiality agreement regarding this matter, this information is subject to the terms of that agreement. ©2024.Jones Lang LaSalle IP, Inc. All rights reserved.