

For Sublease

150 W. Jefferson | Detroit, MI
12,145 RSF Available



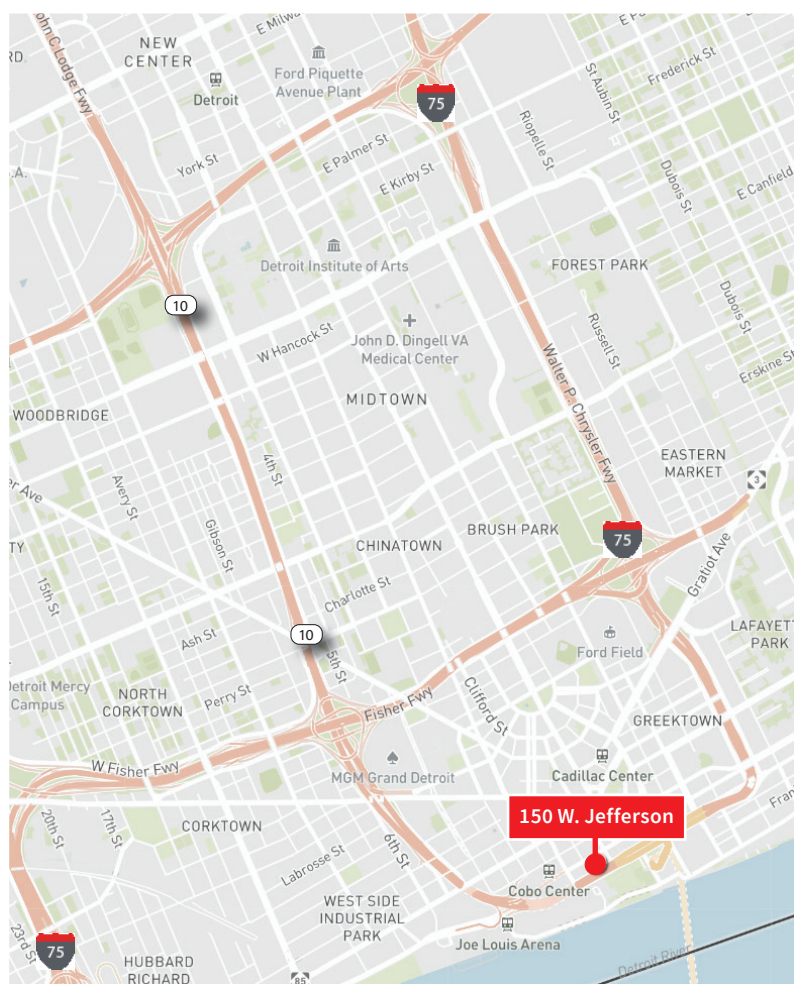
Suite Details

Located in a Class A property with numerous amenities and parking in the heart of Detroit's CBD.

- Move-in ready with furniture available
- Excellent mix of open and collaborative space with private offices and conference rooms
- Great elevator ID and river views



Suite 1300 | 12,145 RSF
Term Through 3/31/2028



JLL

Anne Knopke

Vice President

anne.knopke@jll.com

+1 248 581 3336

Suite Photos

Suite 1300 | 12,145 RSF



JLL

Anne Knopke

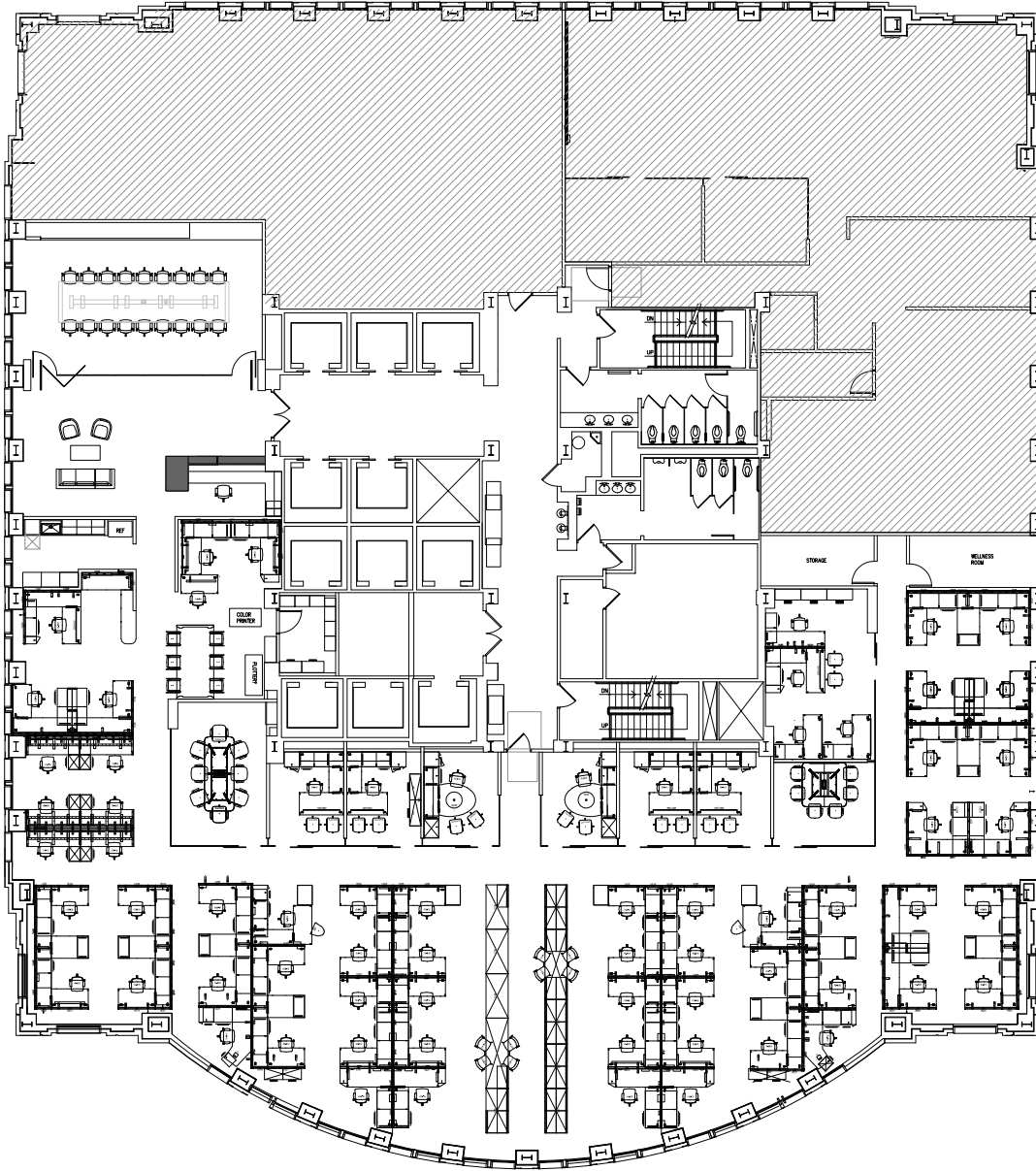
Vice President

anne.knopke@jll.com

+1 248 581 3336

Floor Plan

Suite 1300 | 12,145 RSF



JLL

Anne Knopke

Vice President

anne.knopke@jll.com

+1 248 581 3336