

8221 Preston Court, Jessup, MD

AVAILABLE FOR SUBLEASE



Ryan Burrows
Baltimore, MD

443 452 1514
ryan.burrows@jll.com

Ben Meisels
Baltimore, MD

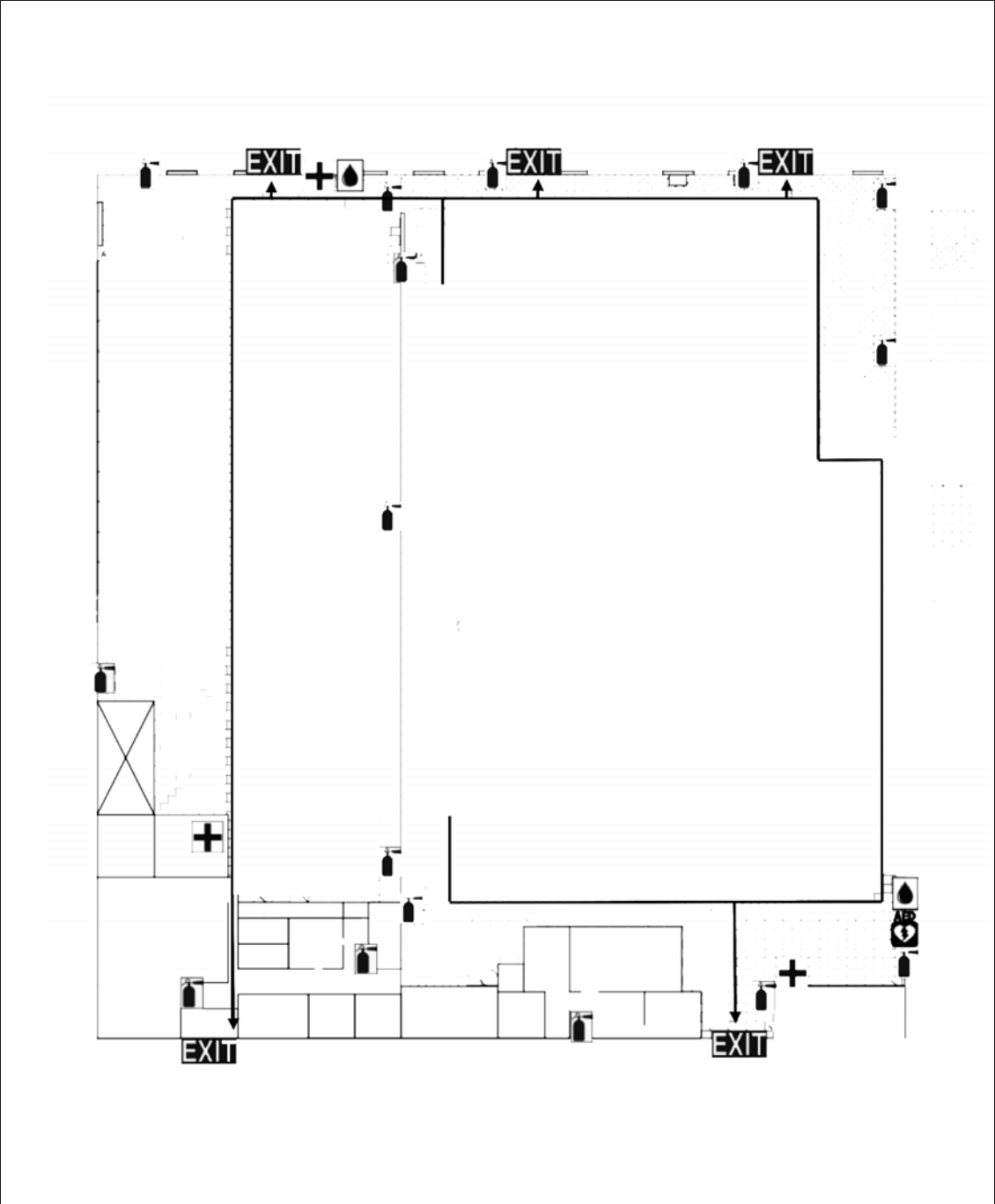
443 451 2614
ben.meisels@jll.com

18,900 - 51,540 SF
Industrial Space

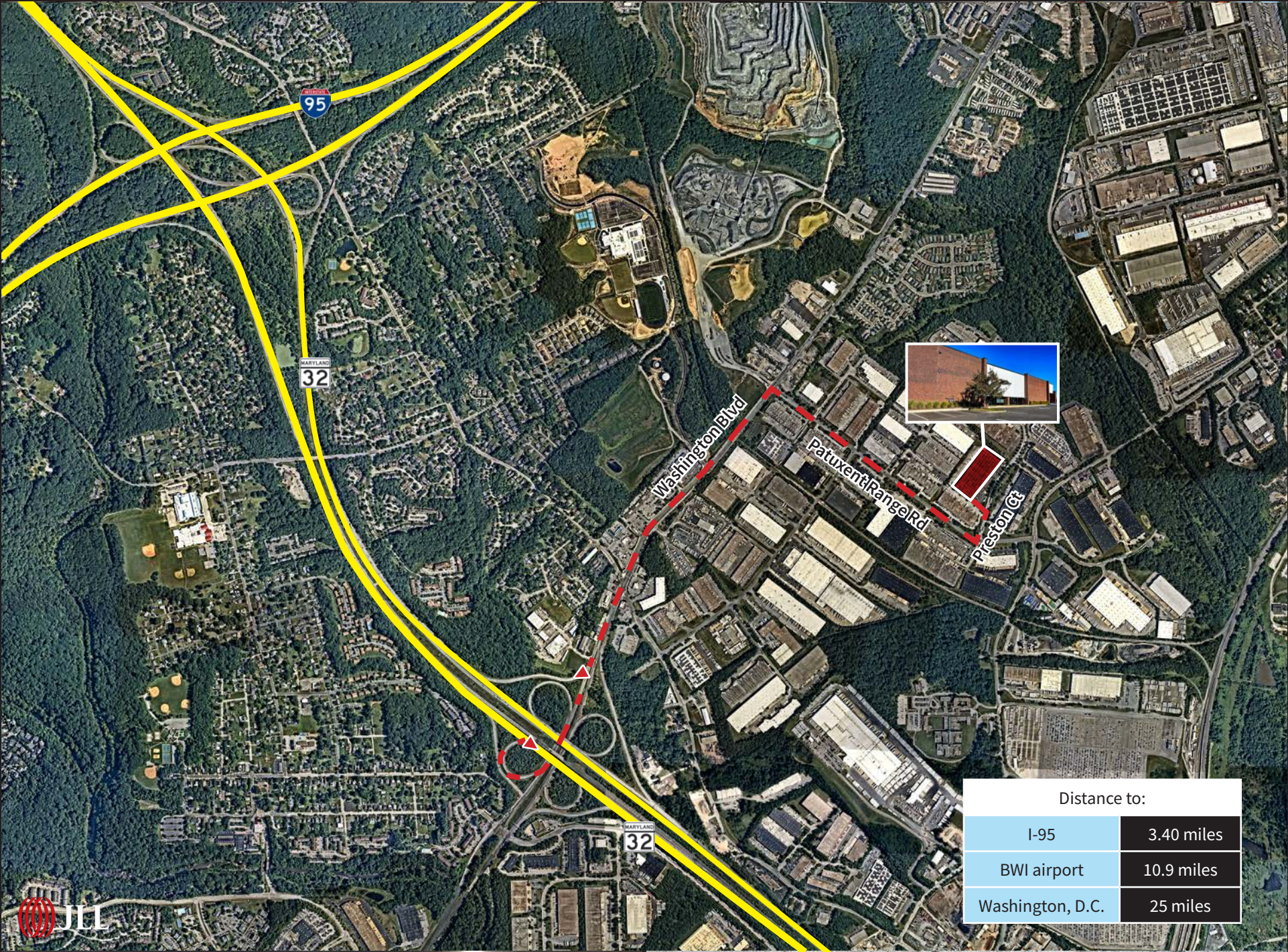
SITE PLAN
& PROPERTY SPECIFICATIONS

8221 Preston Court, Jessup, MD

Building Size	140,118
Available SF	18,900 - 51,540
Office SF	5,000
Clear Height	32'
Docks	9
Sprinkler System	Wet
Lighting	LED
Parking	1.5/1,000
Zoning	M2
Notes	Plug-n-play sublease opportunity through April 2025. 9 docks equipped with seals and scissor gates (5 equipped with pit levelers). Existing racking and furniture in place for a speed to market deal.







Although information has been obtained from sources deemed reliable, neither Owner nor JLL makes any guarantees, warranties or representations, express or implied, as to the completeness or accuracy as to the information contained herein. Any projections, opinions, assumptions or estimates used are for example only. There may be differences between projected and actual results, and those differences may be material. The Property may be withdrawn without notice. Neither Owner nor JLL accepts any liability for any loss or damage suffered by any party resulting from reliance on this information. If the recipient of this information has signed a confidentiality agreement regarding this matter, this information is subject to the terms of that agreement. ©2022. Jones Lang LaSalle IP, Inc. All rights reserved.



For more leasing information, please contact:

Ryan Burrows
Baltimore, MD

443 452 1514
ryan.burrows@jll.com

Ben Meisels
Baltimore, MD

443 451 2614
ben.meisels@jll.com