

For Lease

±4,028 SF flex space available



Congleton Building 1

11890 W. 91st St.

Overland Park, Kansas

Kevin Wilkerson

+ 1 913 469 4601

kevin.wilkerson@jll.com

Phil Algrim

+ 1 913 469 4605

phil.algrim@jll.com

Ben Cadenas

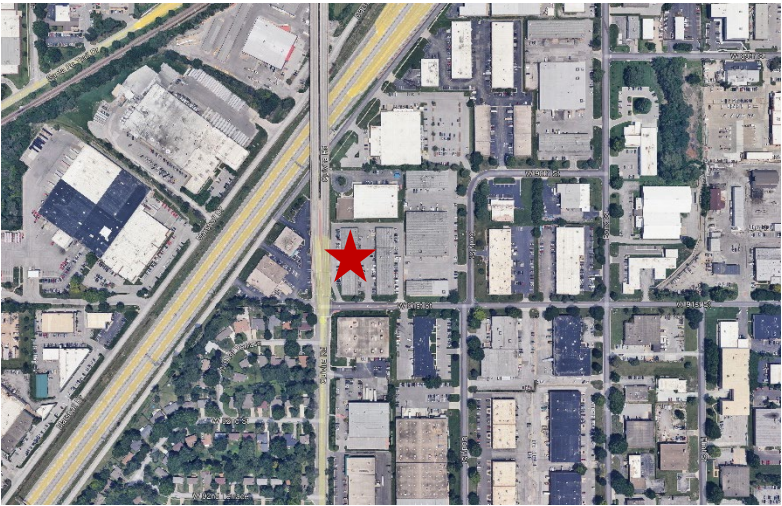
+ 1 913 469 4609

ben.cadenas@jll.com

Property specifications

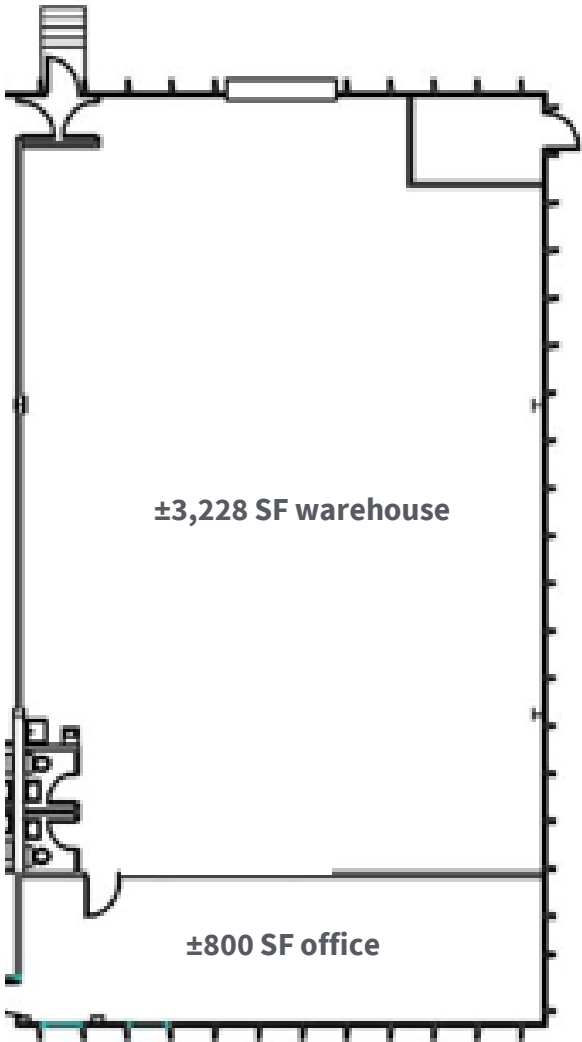
Premises Size	±4,028 SF total ±800 SF office ±3,228 SF warehouse
Clear Height	14'
Dock Doors	1 Ramped Drive-in
Lease Rate	\$10.50 PSF Gross Industrial

Aerial View



- Easy access to both I-35 and 69 Highway at 87th Street and 95th Street
- Abundant services nearby

Floor Plan



Although information has been obtained from sources deemed reliable, JLL does not make any guarantees, warranties or representations, express or implied, as to the completeness or accuracy as to the information contained herein. Any projections, opinions, assumptions or estimates used are for example only. There may be differences between projected and actual results, and those differences may be material. JLL does not accept any liability for any loss or damage suffered by any party resulting from reliance on this information. If the recipient of this information has signed a confidentiality agreement with JLL regarding this matter, this information is subject to the terms of that agreement. ©2024 Jones Lang LaSalle IP, Inc. All rights reserved.