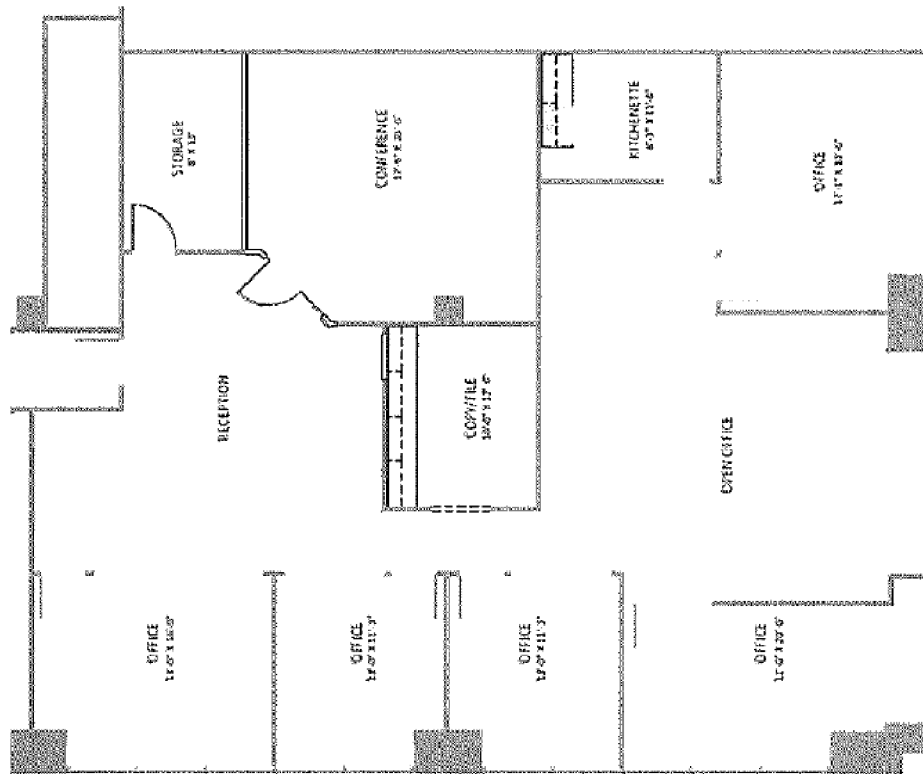
 **JLL** SEE A BRIGHTER WAY

For Sublease

Excellent sublease opportunity in the PNC Tower
Fully-furnished 16th floor suite

For Sublease

3,228 RSF on the 16th floor



Highlights

- Below market rent
- Fully-furnished
- Suite includes five offices with all-glass fronts, a conference room, open area with work stations, storage area, and a kitchenette
- Lease term runs through November 30, 2028
- Class A building amenities that include: Heine Brother's Coffee Shop in the lobby, full-service bank with 24-hour ATM, a full-service cafe in the lower level, attached parking garage with car wash/valet, and 24-hour security.

JLL

Yandell Wood, SIOR

Senior Vice President

Yandell.Wood@jll.com

(502) 394 2518