

1895

UNION STREET

PREMIUM RETAIL AVAILABLE

AVAILABLE FOR LEASE

± 1,635 Sq. Ft. GROUND FLOOR



Jones Lang LaSalle Brokerage, Inc.
Real Estate License #: 01856260

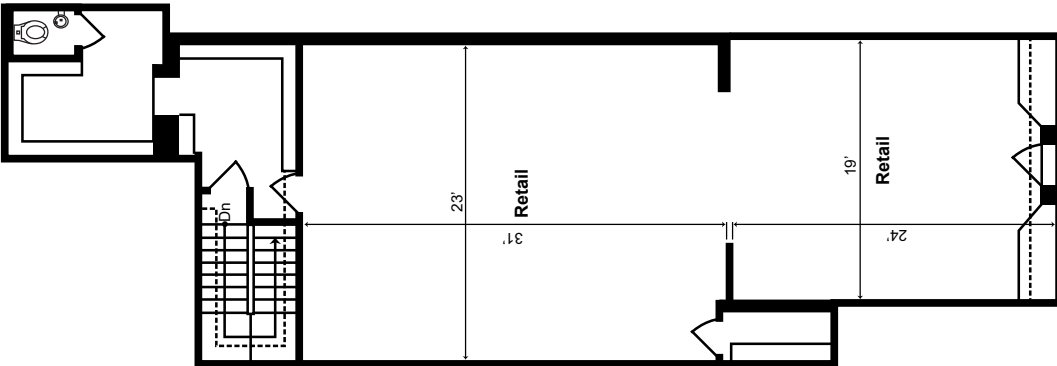
LOCATION

COW HOLLOW DISTRICT UNION ST

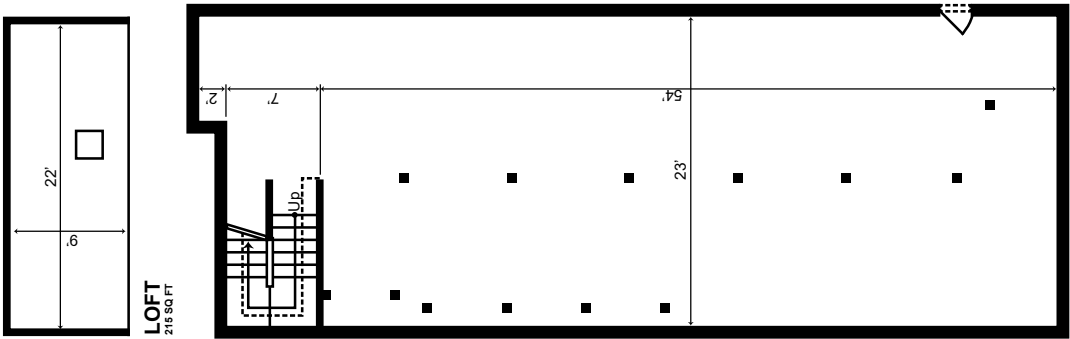
Union Street location next to one of Starbucks' busiest locations. Active Union Street corridor at the epicenter intersection. Rich in history, the Cow Hollow neighborhood is authentic and diverse. It attracts locals and visitors alike, from cafe dwellers, to boutique shoppers, fitness buffs, and the artistically inclined. Cow Hollow is a magnet for dining and nightlife.



FLOOR PLAN



Ground Level



Lower Level



± 1,635 SF
GROUND FLOOR
± 1,535 SF LOWER LEVEL

SPACE HIGHLIGHTS



Union
Street Frontage



Incredible
Foot Traffic



Adjacent
to Starbucks





AREA DEMOGRAPHICS



133,969
Daytime Population



\$188,919
Average Household Income



\$133,438
Median Household Income



51,587
Total Households



38
Median Age



99
Walk Score

ESRI ©2023 (1 mi radius), Placer.ai 2023, Walk Score © 2023



AVOTOASTY™



topdrawer



LaserAway



BONOBOS



| GOUGH STREET | | UNION STREET | |
|-------------------------------|------|---------------|-----------------------------|
| Chron Medica | 1704 | 1715 | Public Park Camino Alto |
| | 1714 | 1725 | Crunch Fitness |
| Union French Cleaners | 1718 | 1735 | Cryo SF |
| Available | 1728 | 1739A | T.C. Jewelers |
| Current Clothing | 1738 | 1739B | Zeymo |
| | | 1745 | VN Nail Care |
| Floral Design Studio | 1750 | 1747 | Cow Hollow Shoe Repair |
| | | 1749 | Partners in Crime |
| Available | 1764 | 1757 | Salon Macias |
| Cassidy Real Estate | 1770 | 1763 | Marina Dental Care |
| Pink Bunny Lingerie | 1772 | 1771 | ML Hair Studio |
| Chic Nail Salon | 1772 | 1775 | The Lotus Method |
| Space Available | 1772 | 1785 | Roam Burgers |
| Dantone | 1782 | 1787 | Available |
| Avotoasty | 1796 | 1799 | Veo Optics/Space Available |
| OCTAVIA STREET | | UNION STREET | |
| Getzwell Pediatrics | 1800 | 1801 | Fenzi Men's Apparel B&A |
| SF Color Collective | 1808 | 1803 | Estate Jewelry |
| Bare Waxing Boutique | 1810 | | |
| Available | 1816 | 1809 | Dumping Union |
| Available | 1824 | 1815 | Available |
| Sprout | 1828 | 1823 | One Medical |
| Total Meltdown | 1830 | 1825 | Skin Medical Spa |
| Union Nail Spa | 1832 | 1827 | Winnie Couture |
| Kaiyo | 1838 | 1833 | Carats and Stone Candid |
| Topdrawer | 1840 | 1837 | Honey and Stardust |
| Morning Lavender/Available | 1846 | 1849 | Available |
| Ambiance | 1858 | 1851 | Available |
| Kroylan | 1864 | 1861 | Med Men |
| Available | 1870 | 1869 | Stretch Lab |
| UNTUCKit | 1872 | 1875 | Available |
| Drip Doctor | 1877 | 1877 | Bio Hacker Health |
| Laser Away | 1878 | 1887 | Sunglass Hut |
| Perfect Fit Personal Training | 1888 | | |
| Private Studio | 1888 | | |
| Yoga Flow | 1892 | | |
| Neo Modern | 1898 | | |
| | | 1895 Union St | Available |
| | | 1899 | Starbucks |
| LAGUNA STREET | | UNION STREET | |
| Wells Fargo | 1900 | 1901 | Bus Stop (Bar) |
| Karma Yoga | 1906 | 1909 | The Epicurean Trader |
| Parking Garage | | | La Boulange de Union |
| Birdies | 1934 | 1919 | Italian Homemade Company |
| Perry's Restaurant | 1944 | 1931 | Union Street Jewelry |
| | | 1933 | Zen Spa |
| | | 1943 | Dreamy Angels |
| | | 1945 | B Brow Lounge |
| The Caviar Company | 1954 | 1949 | Classic Jasmine |
| | | 1951 | Closet 1951 |
| Bonobos | 1964 | | |
| Available | 1974 | | |
| Solstice | 1980 | | |
| Extreme Pizza | 1980 | | |
| Bar None / Available | 1980 | | |
| Juice Shop | 1994 | | |
| Gio Gelati | 1998 | | |
| ALLEY | | UNION STREET | |
| | | 1969 | Urban Remedy |
| | | 1969 | Golden Lotus |
| | | 1969 | High Society |
| | | 1977-A | Vegan Picnic |
| | | 1977 | Available |
| | | 1979 | The Blue Light (Restaurant) |
| | | 1981 | Lululemon |
| | | 1995 | Bank of America/ Available |
| BUCHANAN STREET | | UNION STREET | |



one medical



sunglass hut



URBAN REMEDY



Contacts are:

Ben Lazzareschi

+1 415 228 3070

ben.lazzareschi@jll.com

RE LIC # CA-01414579

David Kessler

+1 925 478 0386

david.kessler@jll.com

RE LIC # CA-02112097

Although information has been obtained from sources deemed reliable, neither Owner nor JLL makes any guarantees, warranties or representations, express or implied, as to the completeness or accuracy as to the information contained herein. Any projections, opinions, assumptions or estimates used are for example only. There may be differences between projected and actual results, and those differences may be material. The Property may be withdrawn without notice. Neither Owner nor JLL accepts any liability for any loss or damage suffered by any party resulting from reliance on this information. If the recipient of this information has signed a confidentiality agreement regarding this matter, this information is subject to the terms of that agreement. © 2024 Jones Lang LaSalle IP, Inc. All rights reserved. Portions of this work product were created with generative AI.

