

One Boerum Place

Downtown Brooklyn Retail Opportunity

Fulton Street
Between Boerum Place
and Red Hook Lane

Premises

Ground floor: 2,108 sf

Frontage

26' on Fulton Street

Ceiling Height

17' on Ground Floor

Status

New construction

Possession

Immediate

Neighboring Retailers



CHOPT
coming soon

BLANK STREET
coming soon

TRADER JOE'S



SHAKE SHACK

CAVA



SEPHORA



Features

- New retail at the base of a 138-unit residential tower
- Directly across the street from **Court Str.-Borough Hall** subway station and steps from **Jay St.-MetroTech** station, servicing over 13.3 million passengers annually combined (2023) **2 3 4 5 A C F R**
- Located steps from the Brooklyn Borough hall Greenmarket
- Retail neighbors in the building include Mighty Quinn's BBQ, Salons by JC, and Chopt & Blank Street Coffee (coming soon)

Ryan P. Condren

+1 212 220 4117

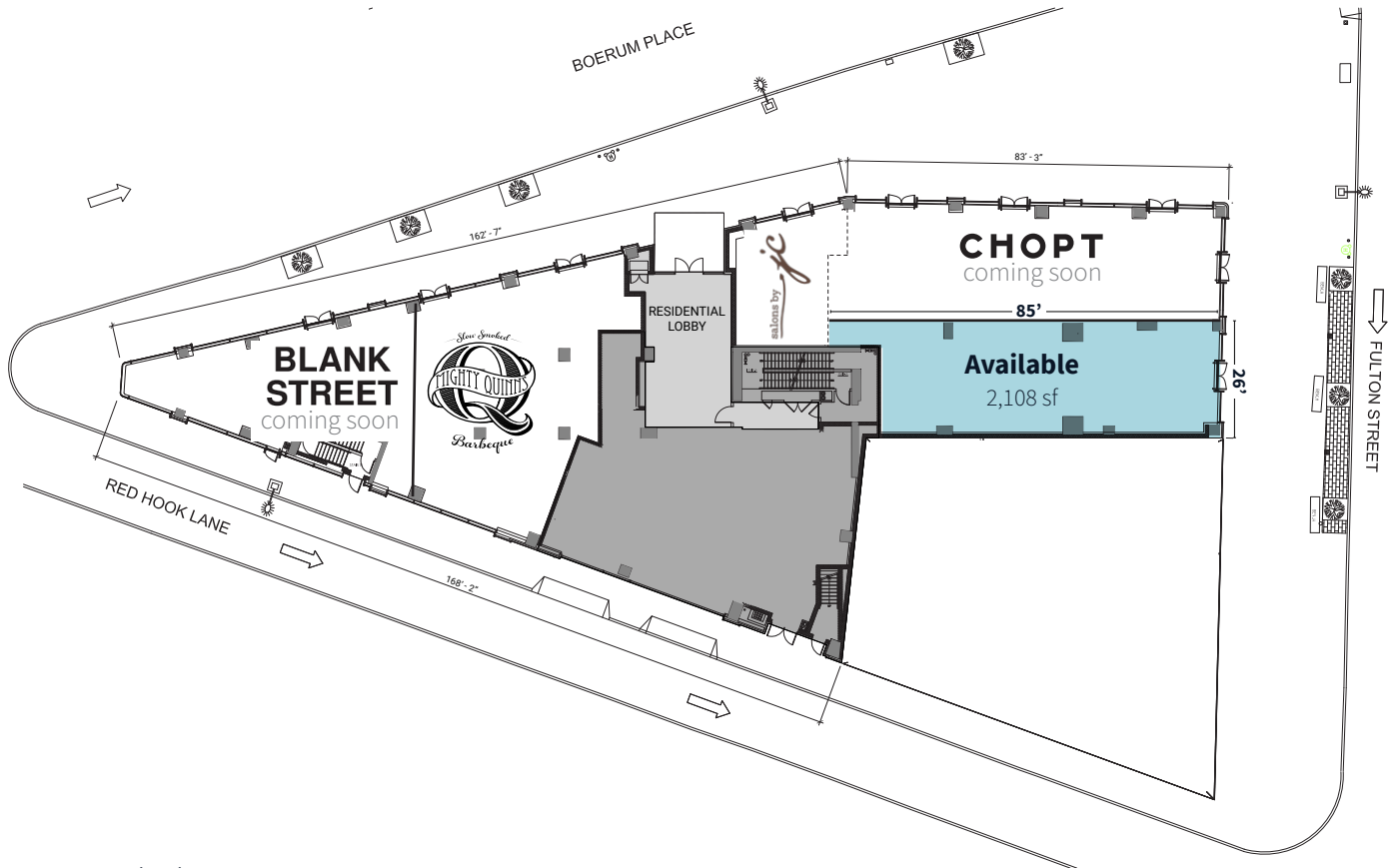
ryan.condren@jll.com

George Danut

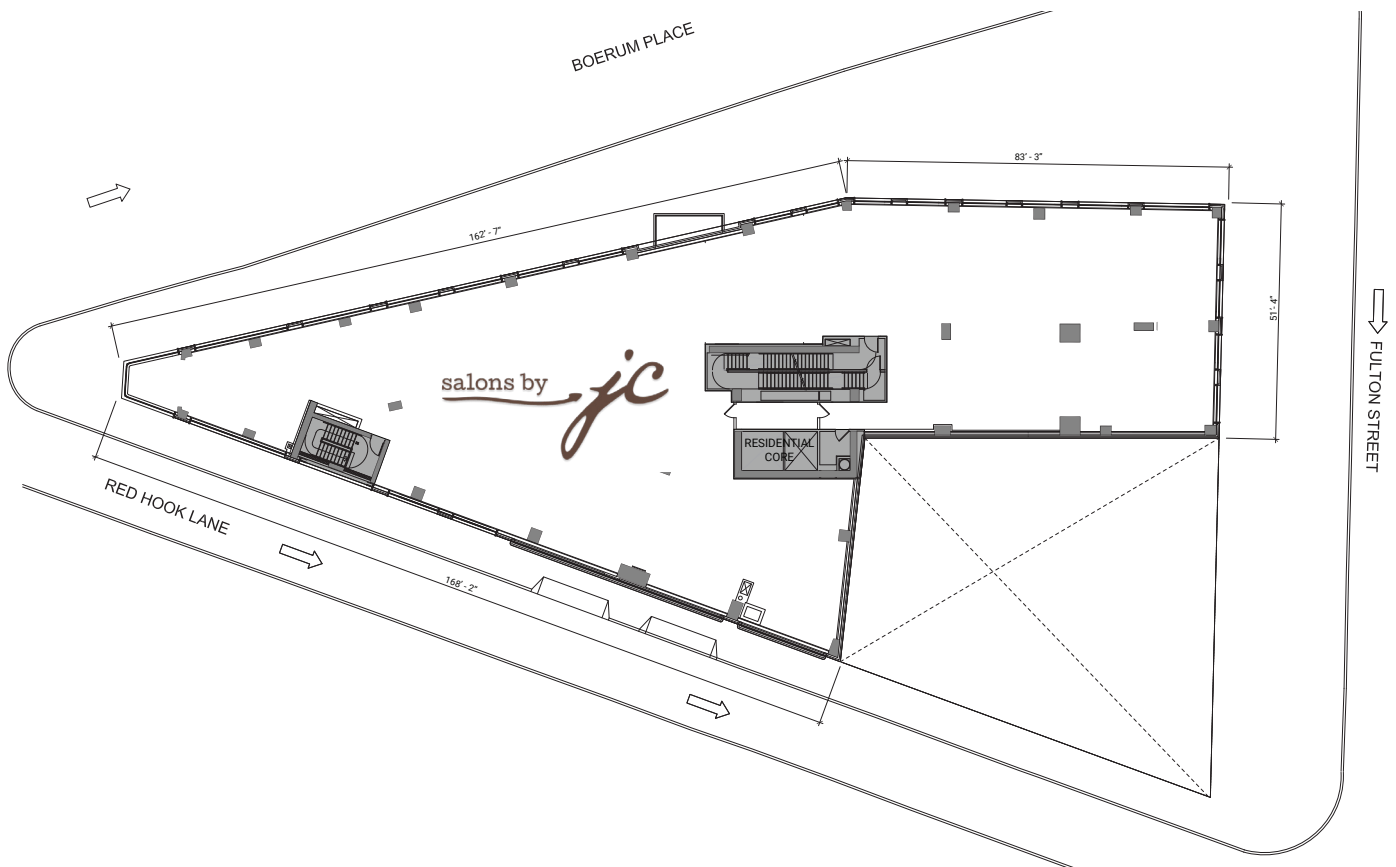
+1 212 220 4121

george.danut@jll.com

Ground Floor



Second Floor



Area Retail



Jones Lang LaSalle Brokerage, Inc.
330 Madison Avenue New York, NY 10017
DISCLAIMER

Although information has been obtained from sources deemed reliable, neither Owner nor JLL makes any guarantees, warranties or representations, express or implied, as to the completeness or accuracy as to the information contained herein. Any projections, opinions, assumptions or estimates used are for example only. There may be differences between projected and actual results, and those differences may be material. The Property may be withdrawn without notice. Neither Owner nor JLL accepts any liability for any loss or damage suffered by any party resulting from reliance on this information. If the recipient of this information has signed a confidentiality agreement regarding this matter, this information is subject to the terms of that agreement. © 2024 Jones Lang LaSalle IP, Inc. All rights reserved.