

# Sublease Available

**1222 W. Michigan Ave.**  
**Three Rivers, MI**

3,402 SF  
Drive-thru Retail

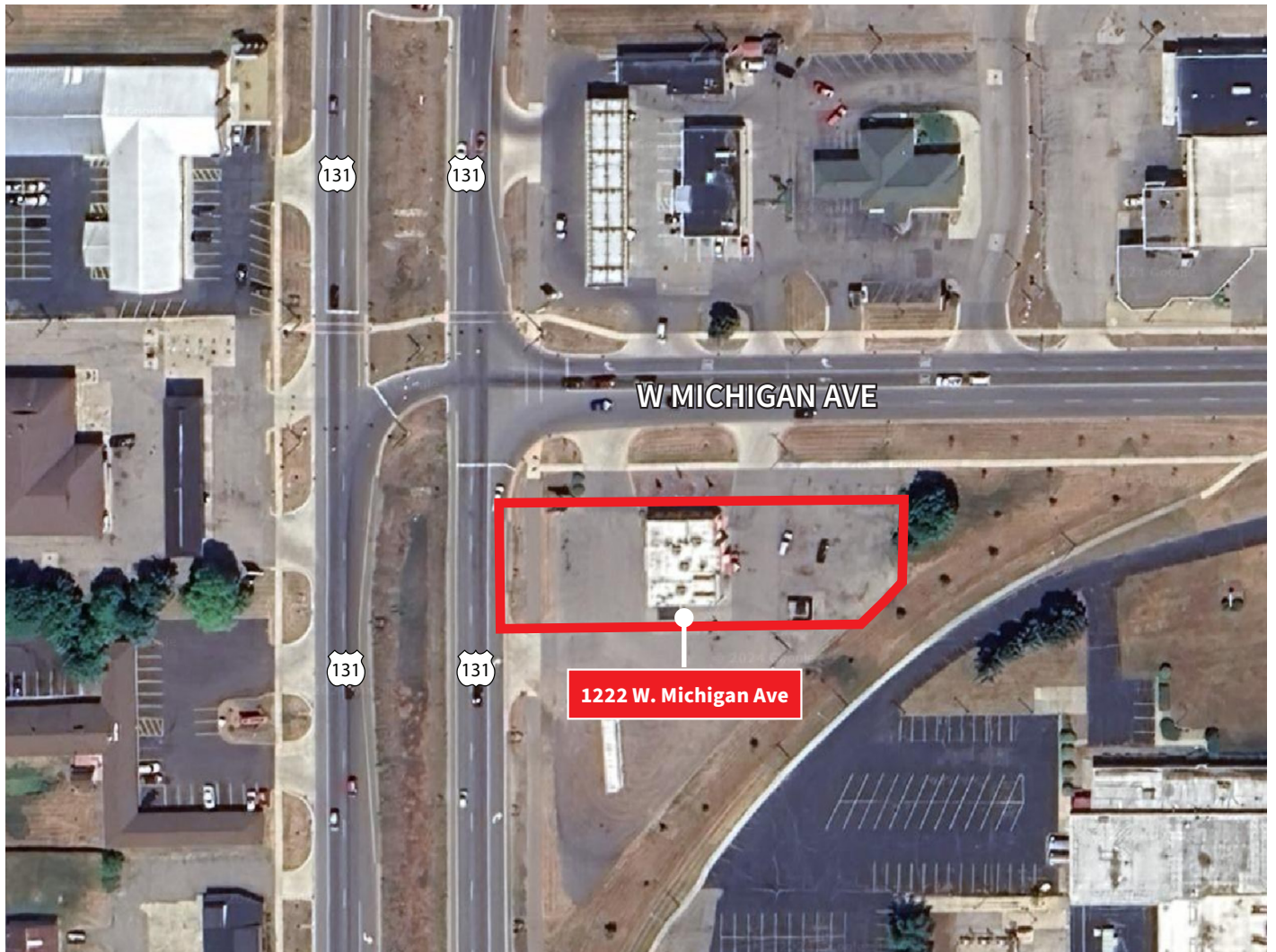
- Original lease through 9-30-2038
- Former KFC
- 0.62 acre lot
- High traffic corridor
- Zoned B4

**JLL**

**Robert Mihelich**  
robert.mihelich@jll.com  
+1 248 581 3366

**Zach Resnick**  
zach.resnick@jll.com  
+1 248 581 3263

# Property Map



**JLL**

**Robert Mihelich**

robert.mihelich@jll.com

+1 248 581 3366

**Zach Resnick**

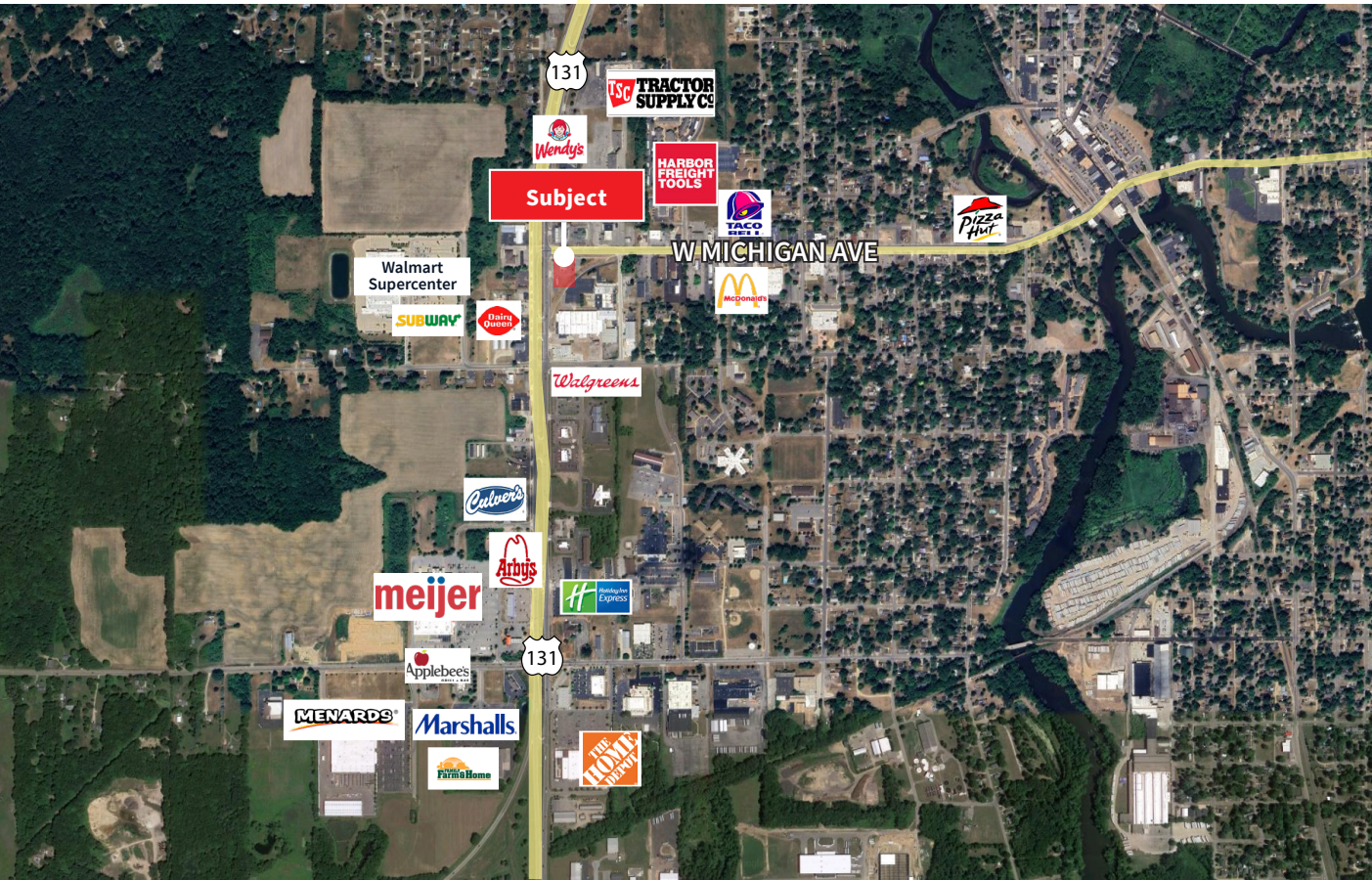
zach.resnick@jll.com

+1 248 581 3263

Although information has been obtained from sources deemed reliable, JLL does not make any guarantees, warranties or representations, express or implied, as to the completeness or accuracy as to the information contained herein. Any projections, opinions, assumptions or estimates used are for example only. There may be differences between projected and actual results, and those differences may be material. JLL does not accept any liability for any loss or damage suffered by any party resulting from reliance on this information. If the recipient of this information has signed a confidentiality agreement with JLL regarding this matter, this information is subject to the terms of that agreement. ©2024. Jones Lang LaSalle IP, Inc. All rights reserved.



# Location Map



	1 mile	3 miles	5 miles
Estimated population	3,550	11,429	15,355
Estimated households	1,469	4,429	6,000
Est. Average HH income	\$56,772	\$62,553	\$69,627
Traffic counts	US-131 & W. Michigan Ave		17,831 ADT

JLL

**Robert Mihelich**  
robert.mihelich@jll.com  
+1 248 581 3366

**Zach Resnick**  
zach.resnick@jll.com  
+1 248 581 3263

Although information has been obtained from sources deemed reliable, JLL does not make any guarantees, warranties or representations, express or implied, as to the completeness or accuracy as to the information contained herein. Any projections, opinions, assumptions or estimates used are for example only. There may be differences between projected and actual results, and those differences may be material. JLL does not accept any liability for any loss or damage suffered by any party resulting from reliance on this information. If the recipient of this information has signed a confidentiality agreement with JLL regarding this matter, this information is subject to the terms of that agreement. ©2024. Jones Lang LaSalle IP, Inc. All rights reserved.