




# For sublease

11,180 RSF Office Space Available

 **JLL** SEE A BRIGHTER WAY



# Headline





# Sublease Detail

Building: 5353 Wayzata Blvd

Suite: 200

RSF: 11,180

Term Through: 6/30/2025

Asking Rate: \$18.00 MG

Furniture: Available

## Space Detail

18 Private Offices

25 Cub Workstations

Large Conference Room

Small Conference Room

Break Room

Reception Area

## Building Detail

Located in the West End

Accessibility to Hwy 1-- and I-394

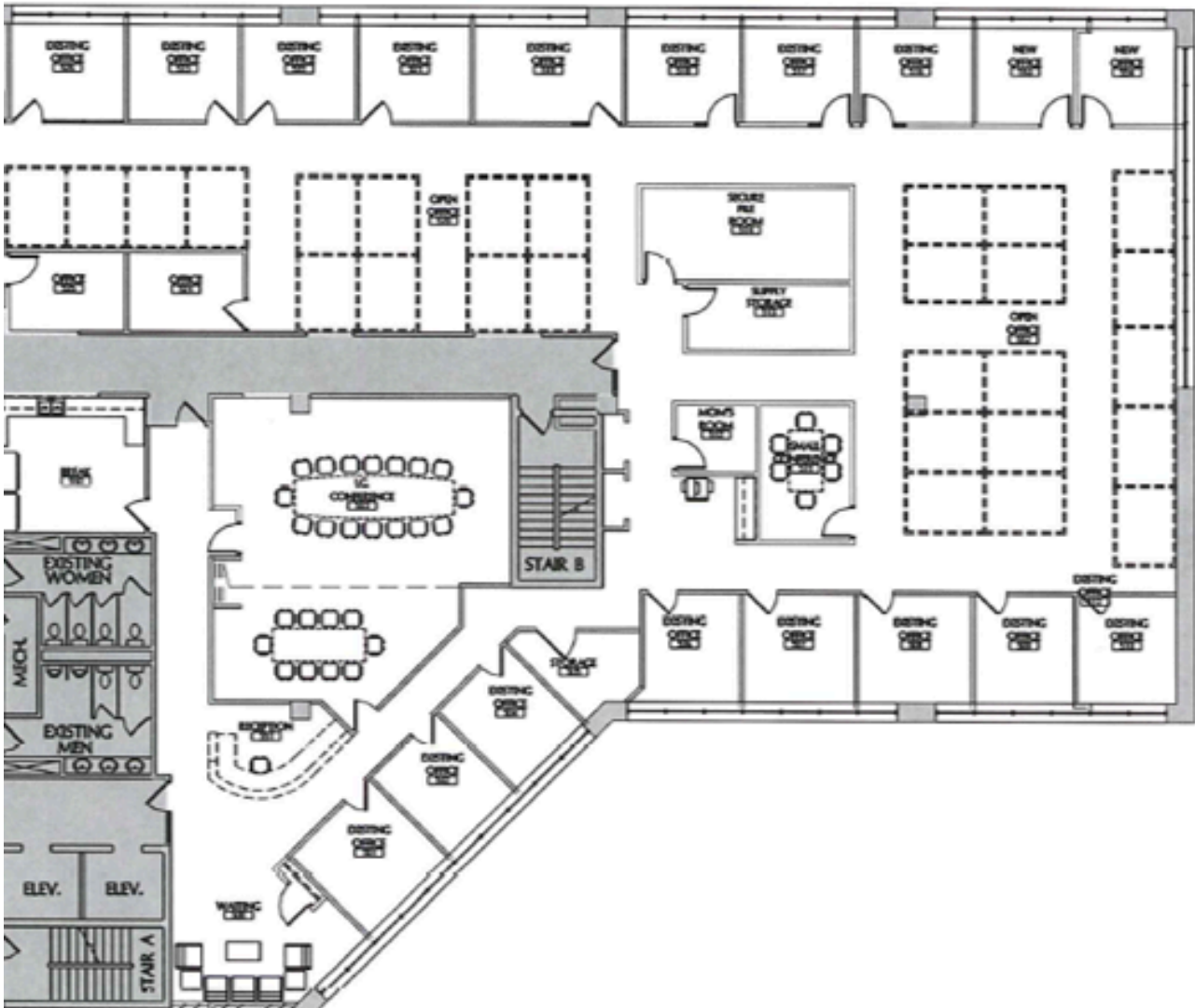
Ample nearby retail amenities

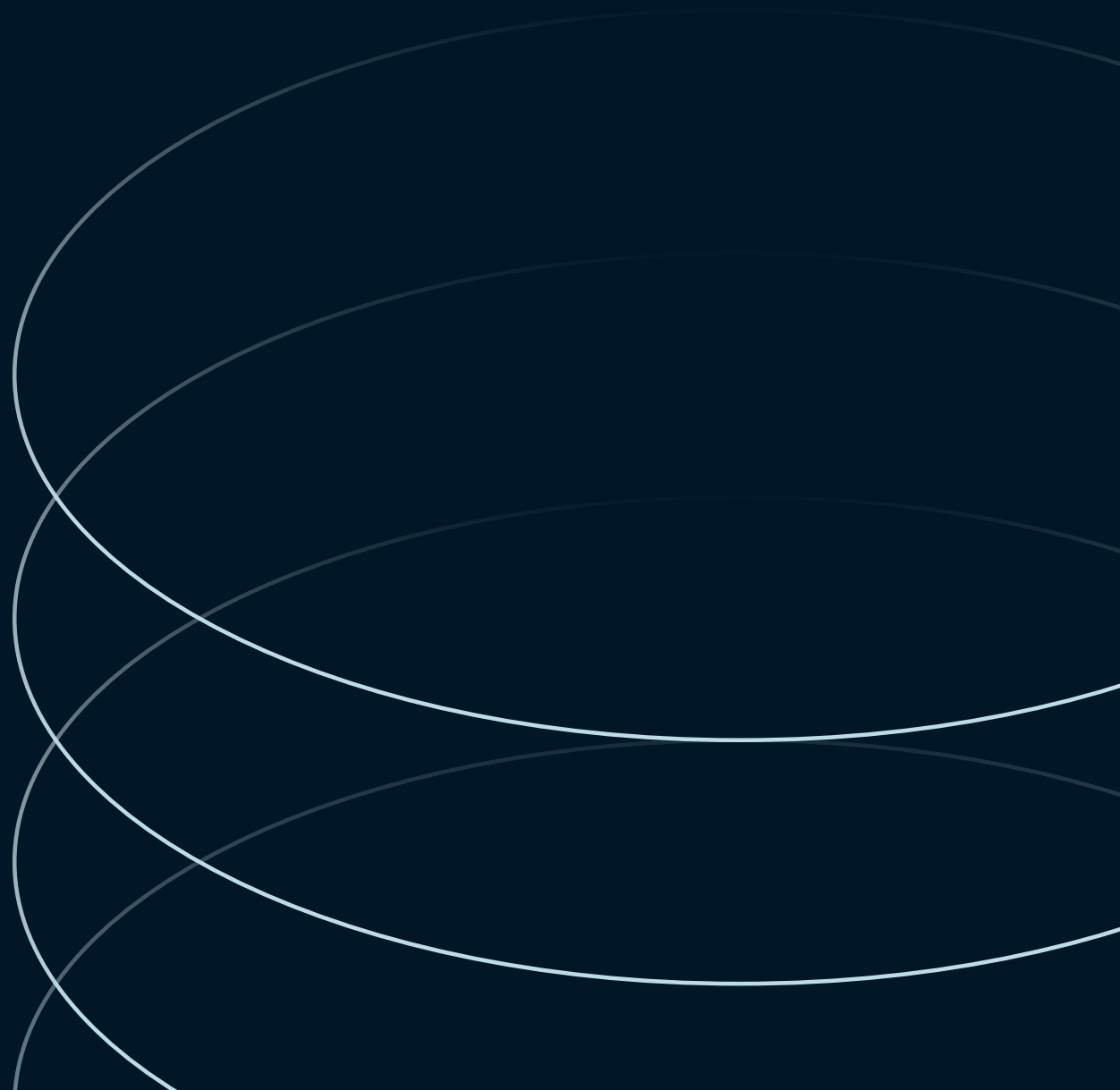
3.50/1,000 RSF Free Surface Parking



[Virtual Tour](#)

# Floorplan





**Teig Hutchison**

Vice President

[Teig.Hutchison@jll.com](mailto:Teig.Hutchison@jll.com)

+1 612 217 5157

**jll.com**