

THE LUMEN

RETAIL AVAILABILITY FOR LEASE

LONG ISLAND CITY, NYC



THE LUMEN



Long Island City's latest development, offering impressive retail opportunity at the base of a 938-unit residential tower.

Scheduled to be completed in 2025, The Lumen is located in the heart of the rapidly growing neighborhood, rich in diverse and plentiful array of shopping, dining, cultural and entertainment options.

With Court Square Station just one block away and Jackson Avenue and Queens Plaza nearby, The Lumen offers accessibility from all parts of New York City.

LOCATION

23-15 44th Road, Long Island City, NY
At the NE corner of 23rd St. & 44th Rd.

ACCESS

Queens Plaza
Court Sq.



AVAILABLE SPACE

Availability	Ground Floor	Lower Level	Frontage
Retail A	2,882 sf	1,688 sf	122' wraparound
Retail B	17,882 sf	4,106 sf	370' wraparound

*Divisions considered

CEILING HEIGHTS

Ground Floor: 13'5"-15'8"
Lower Level: 7'10"

POSSESSION

2025

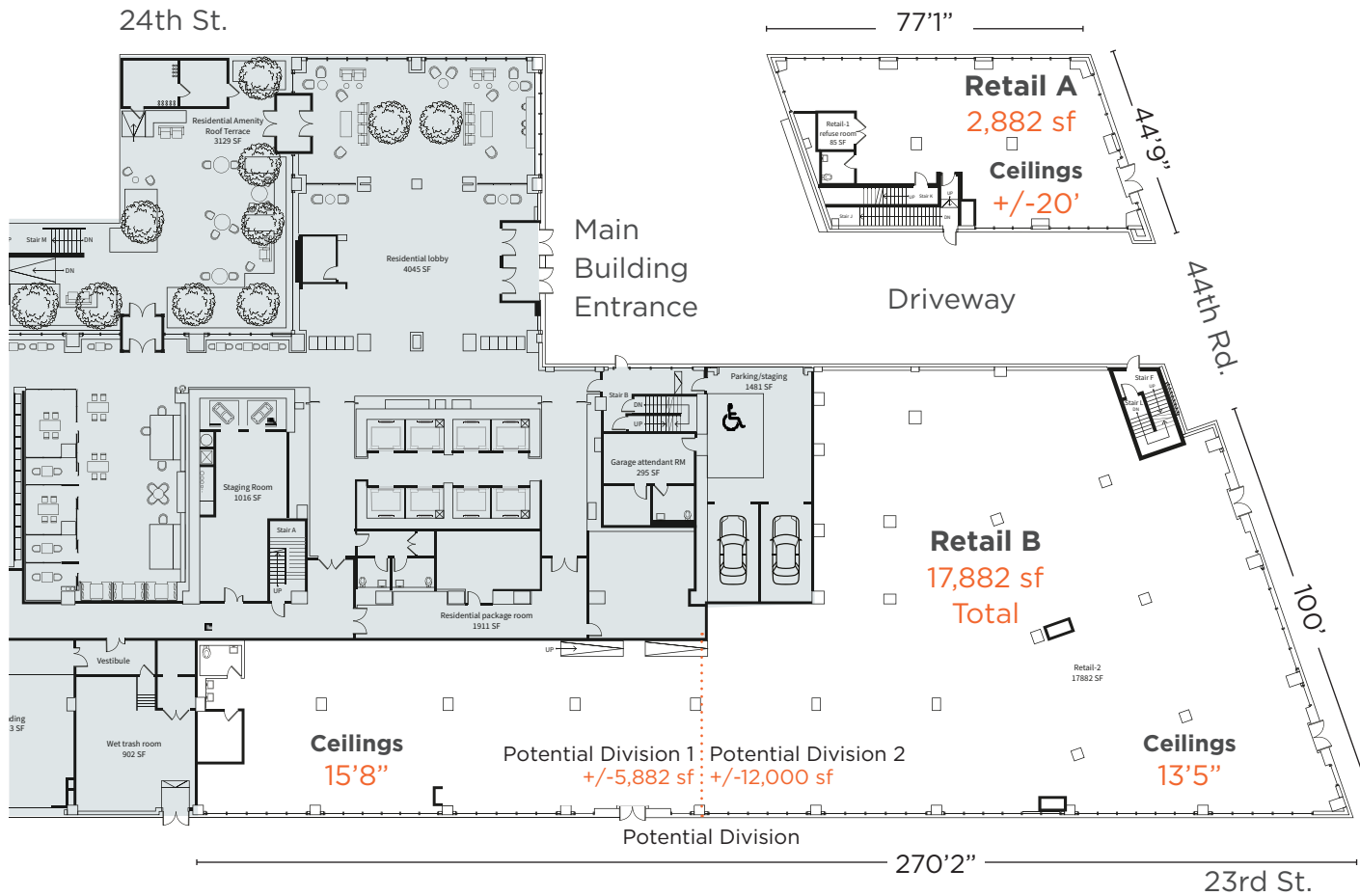


EAST VIEW - 24TH STREET

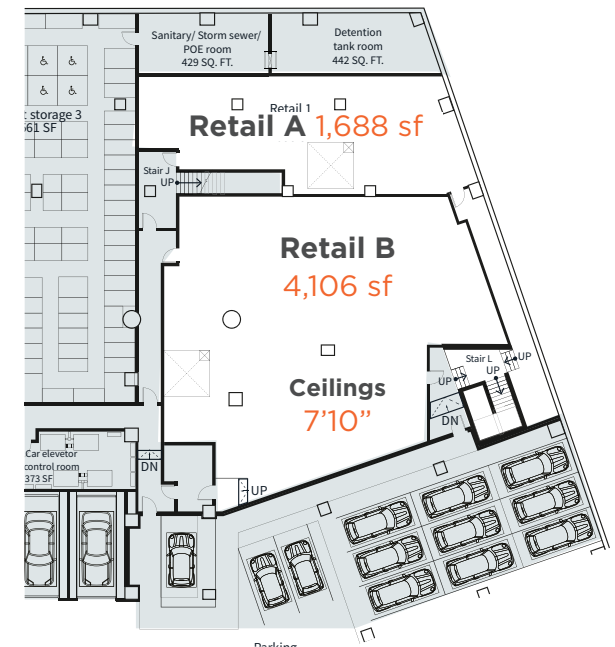


THE LUMEN

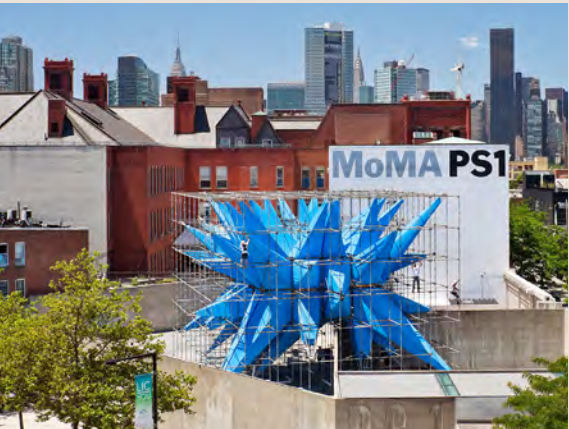
GROUND FLOOR



LOWER LEVEL



LONG ISLAND CITY NEIGHBORHOOD



THE LUMEN

FOR LEASING INFORMATION, PLEASE CONTACT:

MATT OGLE

+1 212 812 5982
MATT.OGLE@JLL.COM

GEORGE DANUT

+1 212 220 4121
GEORGE.DANUT@JLL.COM

RYAN P. CONDREN

+1 212 220 4117
RYAN.CONDREN@JLL.COM

AMANDA SUJAK

+1 212 479 9865
AMANDA.SUJAK@JLL.COM



Jones Lang LaSalle Brokerage, Inc. | 330 Madison Avenue New York, NY 10017

DISCLAIMER Although information has been obtained from sources deemed reliable, neither Owner nor JLL makes any guarantees, warranties or representations, express or implied, as to the completeness or accuracy as to the information contained herein. Any projections, opinions, assumptions or estimates used are for example only. There may be differences between projected and actual results, and those differences may be material. The Property may be withdrawn without notice. Neither Owner nor JLL accepts any liability for any loss or damage suffered by any party resulting from reliance on this information. If the recipient of this information has signed a confidentiality agreement regarding this matter, this information is subject to the terms of that agreement. ©2024 Jones Lang LaSalle IP, Inc. All rights reserved.

