



# For sublease

12660 Coit Road, Dallas, TX

3,200 RSF | 2nd Generation Office/Medical Office Suite



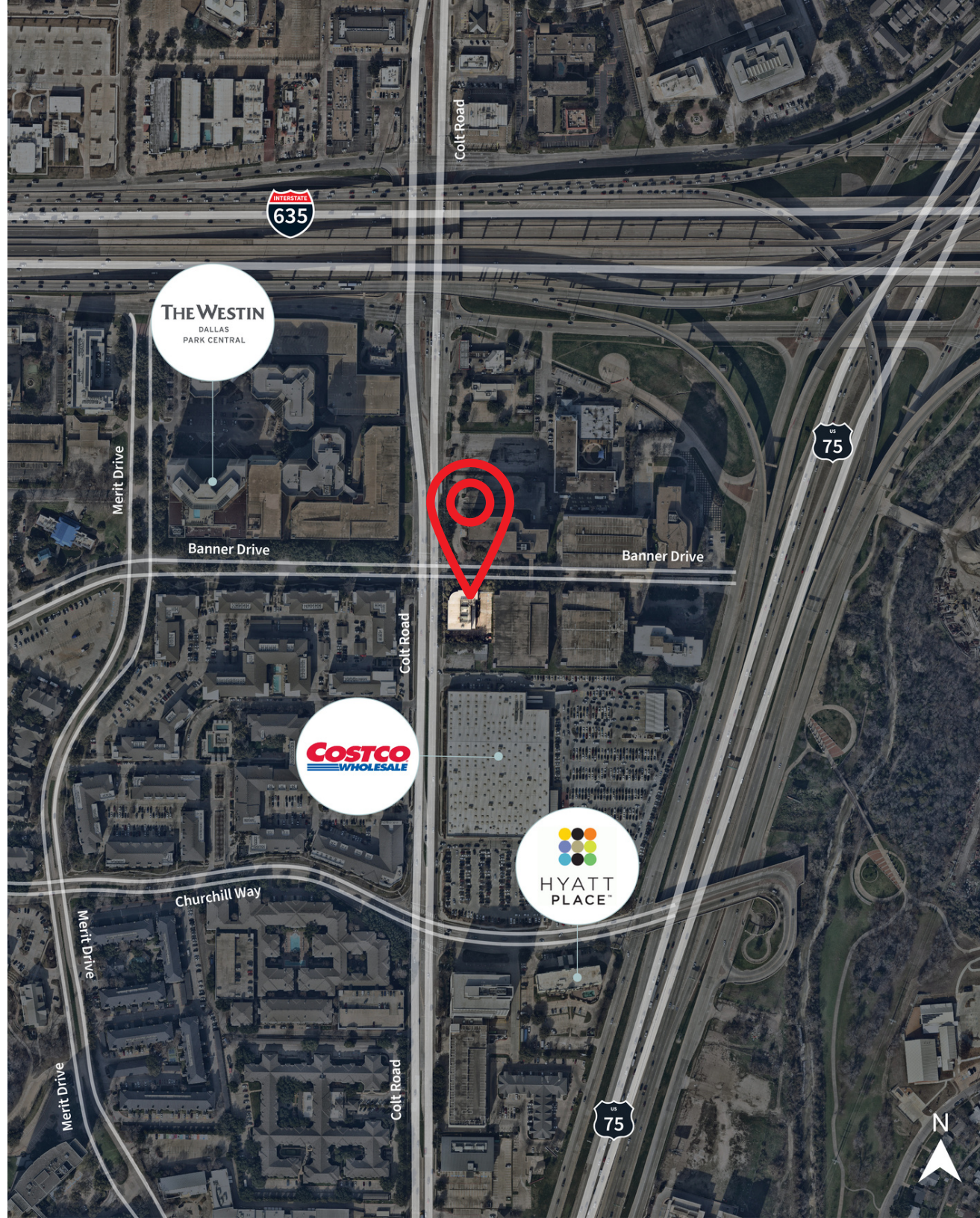


# Property Facts

- 2nd Generation Office/Med Office Suite
- 4 Office | 1 Conference | 1 Bullpen
- 4.0/1,000 parking ratio
- Well located off US-75
- 1.2 miles to Medical City Dallas
- Excellent visibility with strong ingress/egress

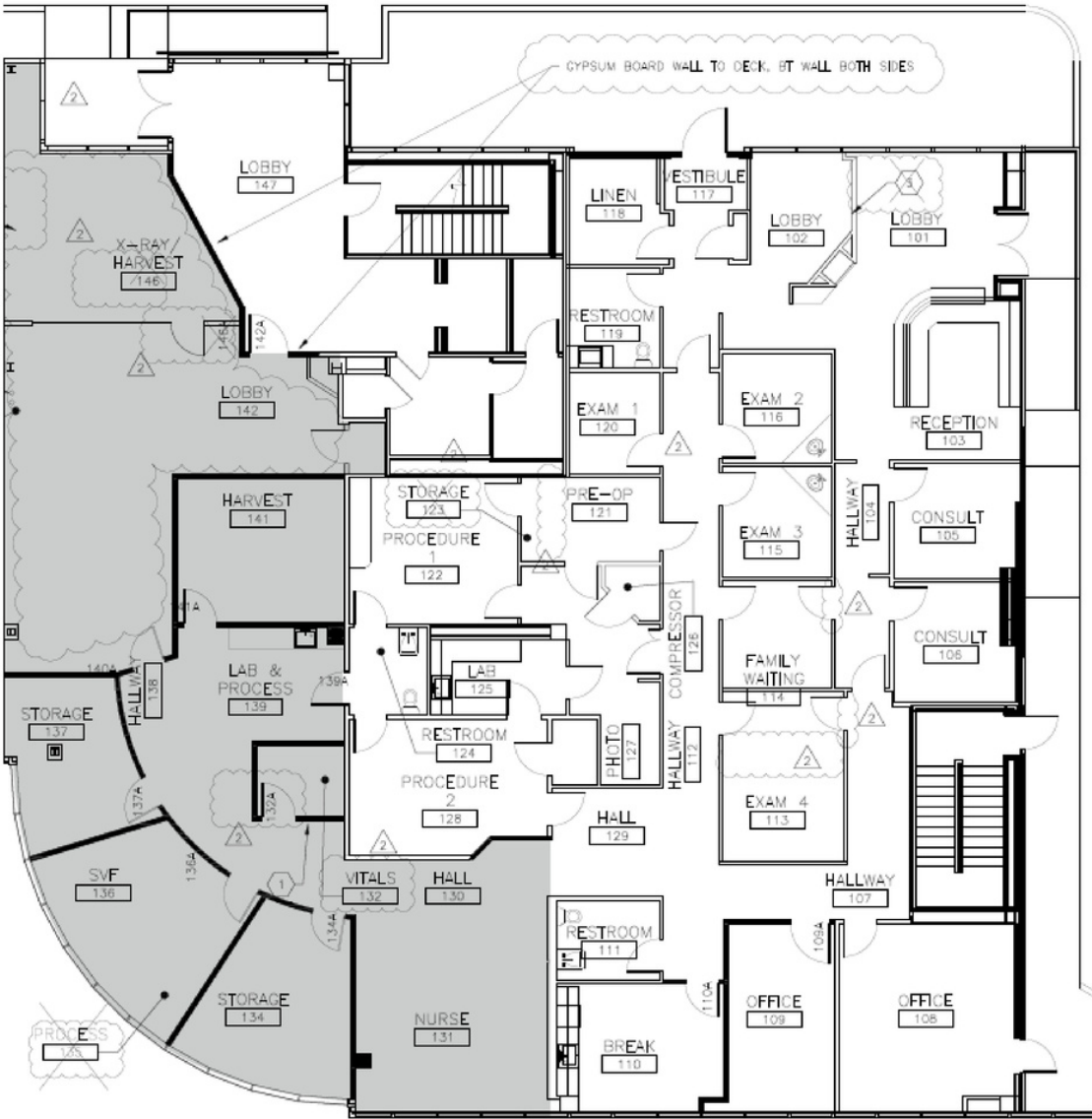
Suite 110 | 3,200 RSF

	5 min	10 min	15 miles
Estimated population	407,736	1,444,150	2,785,925
Estimated households	175,309	609,932	1,085,795
Est. Median HH income	\$68,568	\$74,460	\$76,748





Floorplan | Suite 110







For more information contact:

**Chris Higbie**

[chris.higbie@jll.com](mailto:chris.higbie@jll.com)

+1 214 396 5422

Although information has been obtained from sources deemed reliable, JLL does not make any guarantees, warranties or representations, express or implied, as to the completeness or accuracy as to the information contained herein. Any projections, opinions, assumptions or estimates used are for example only. There may be differences between projected and actual results, and those differences may be material. JLL does not accept any liability for any loss or damage suffered by any party resulting from reliance on this information. If the recipient of this information has signed a confidentiality agreement with JLL regarding this matter, this information is subject to the terms of that agreement. ©2023. Jones Lang LaSalle IP, Inc. All rights reserved.