



690 N Cofco Center Court, Phoenix AZ



For Lease

2 Story | ±76,731 SF Office Building





BUILDING HIGHLIGHTS



Newly Renovated
Lobby & Restrooms



Availabilities Ranging
From $\pm 1,500$ SF
to $\pm 20,000$ SF

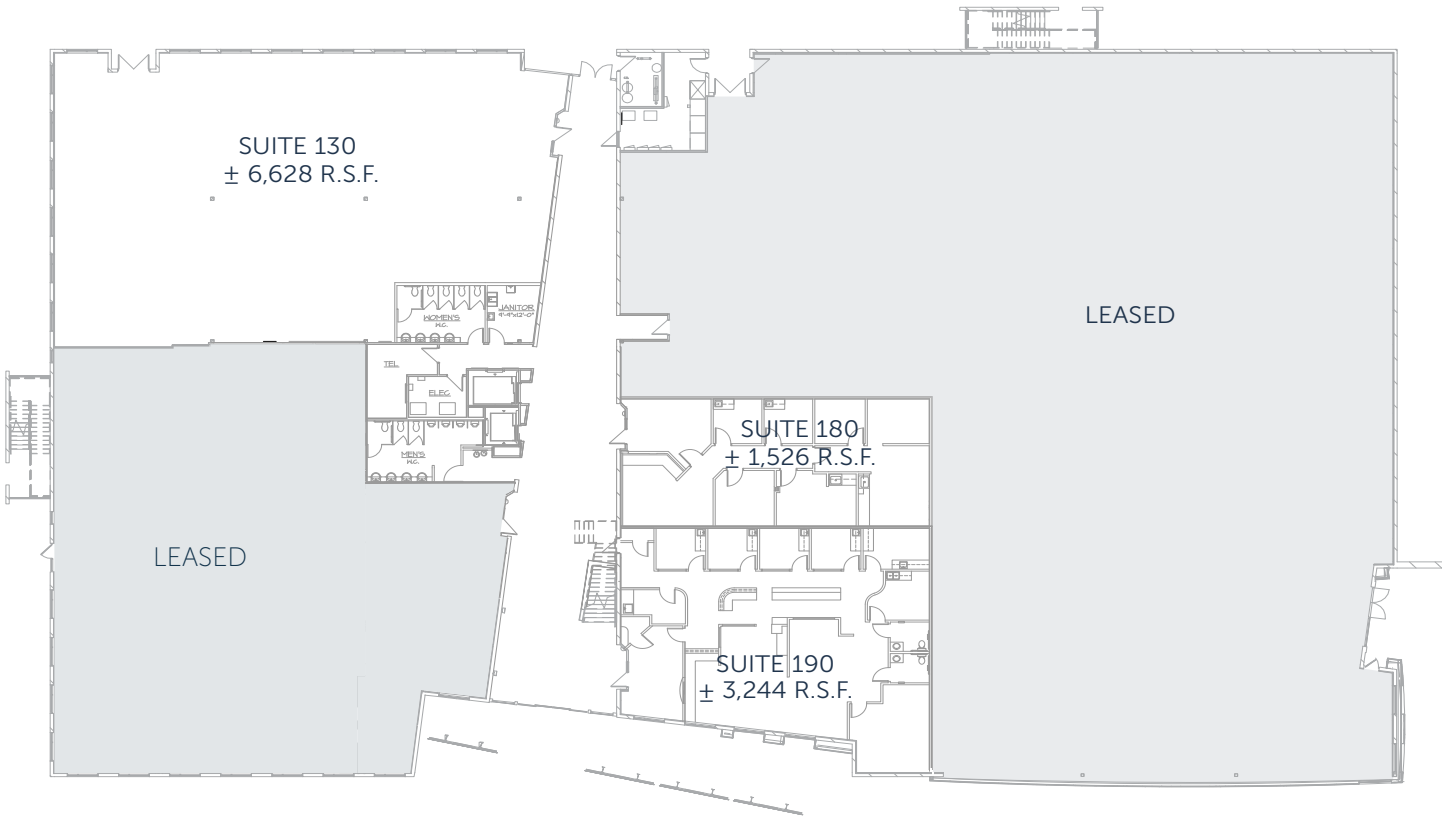


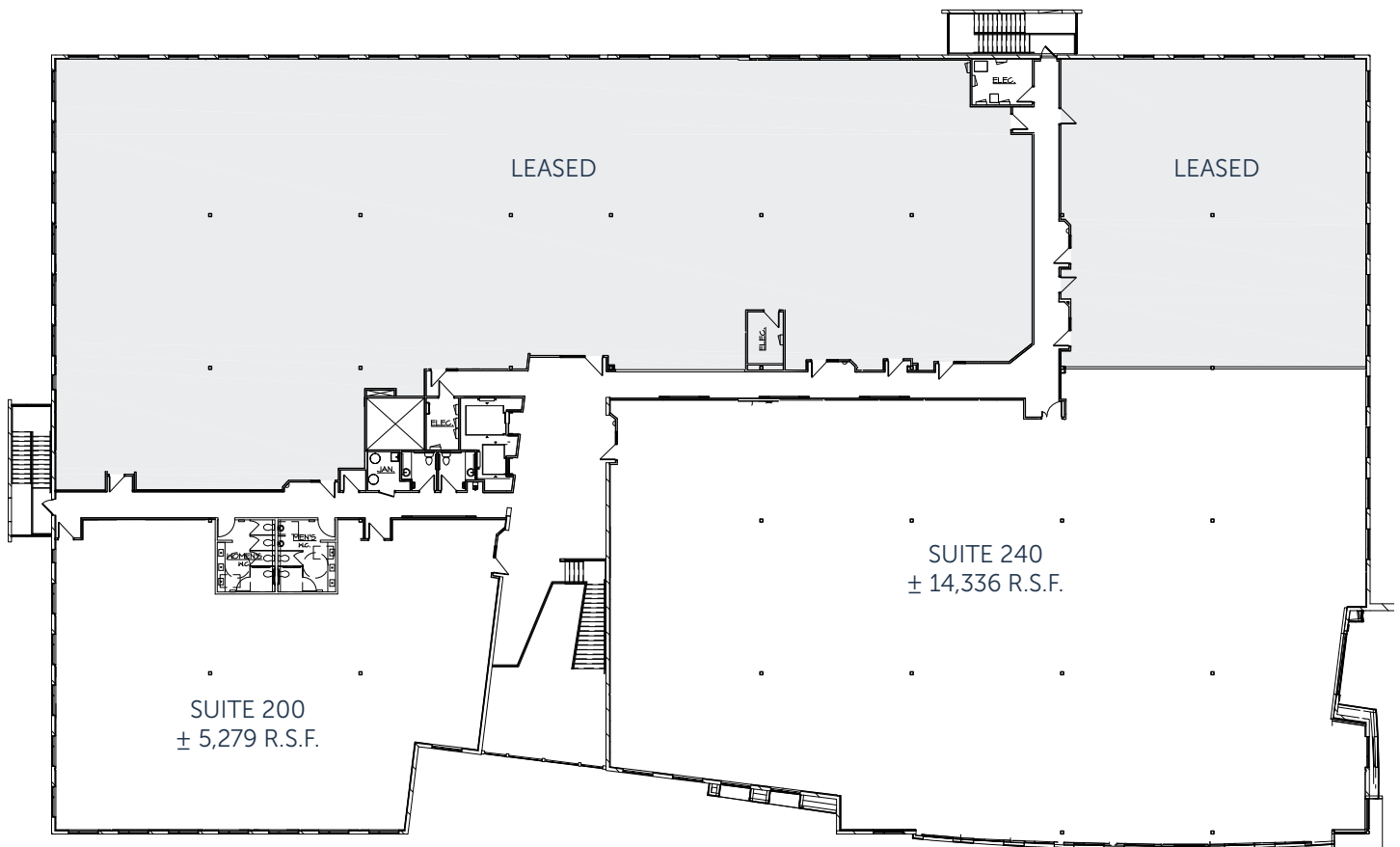
Covered Canopy
Parking Available



4.02/1,000
Parking Ratio

First floor







WITHIN TWO MILES OF
Phoenix Sky Harbor Airport



ONE BLOCK SOUTH OF
Loop 202 Freeway



WALKING DISTANCE TO
Phoenix Light Rail
providing direct access to
retail, dining &
hotel amenities



WITHIN ONE MILE,
OVER 25 restaurants
& 5 major hotels



690 N Cofco Center Court, Phoenix AZ



For more information, contact:

Mark Gustin, SIOR, CCIM

+1 602 282 6316

mark.gustin@jll.com

Jimmy Cornish

+1 602 282 6363

jimmy.cornish@jll.com

Although information has been obtained from sources deemed reliable, JLL does not make any guarantees, warranties or representations, express or implied, as to the completeness or accuracy as to the information contained herein. Any projections, opinions, assumptions or estimates used are for example only. There may be differences between projected and actual results, and those differences may be material. JLL does not accept any liability for any loss or damage suffered by any party resulting from reliance on this information. If the recipient of this information has signed a confidentiality agreement with JLL regarding this matter, this information is subject to the terms of that agreement. ©2024 Jones Lang LaSalle Brokerage, Inc. All rights reserved.

