




Land For Sale

0.89 acres | \$625,000

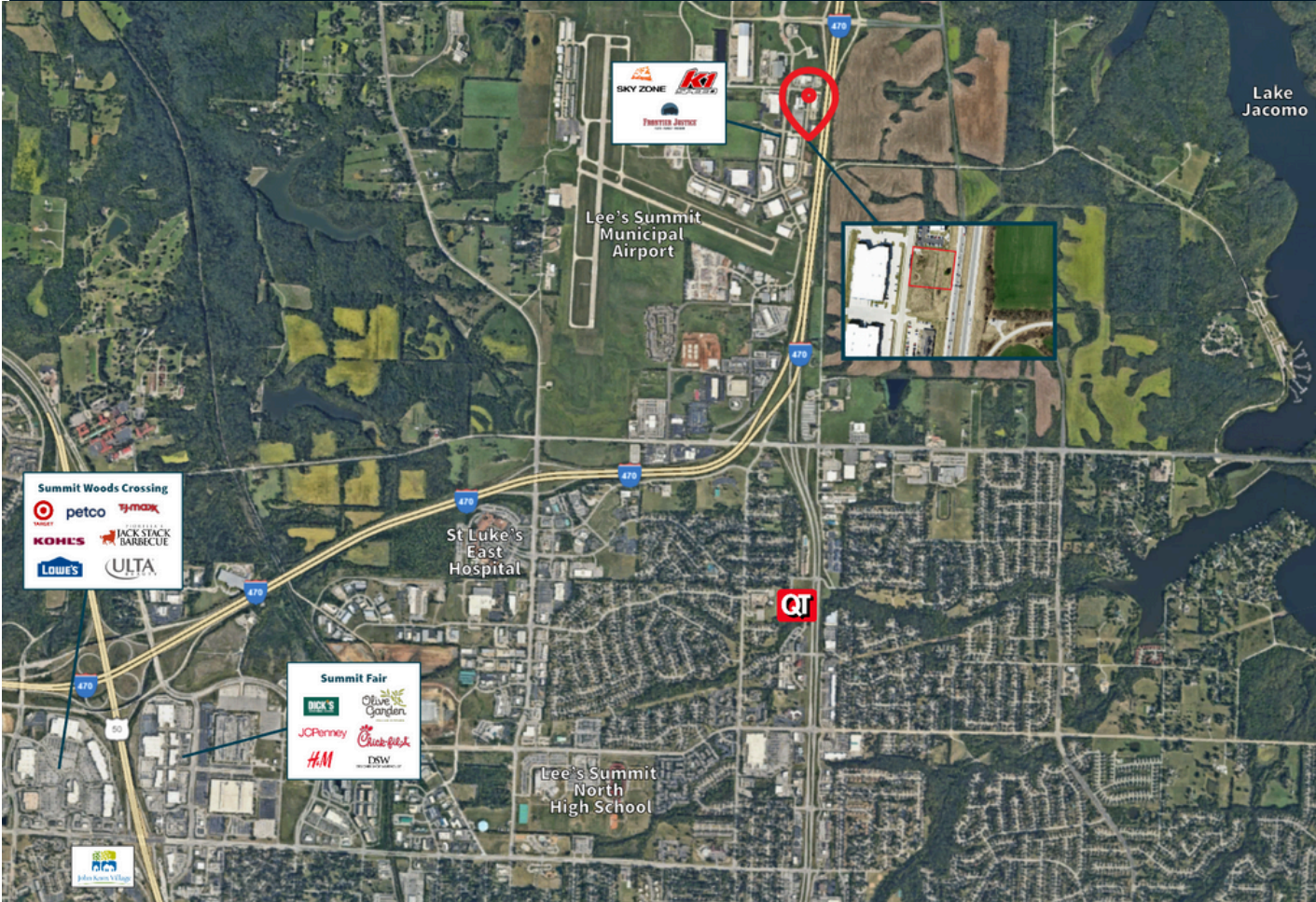
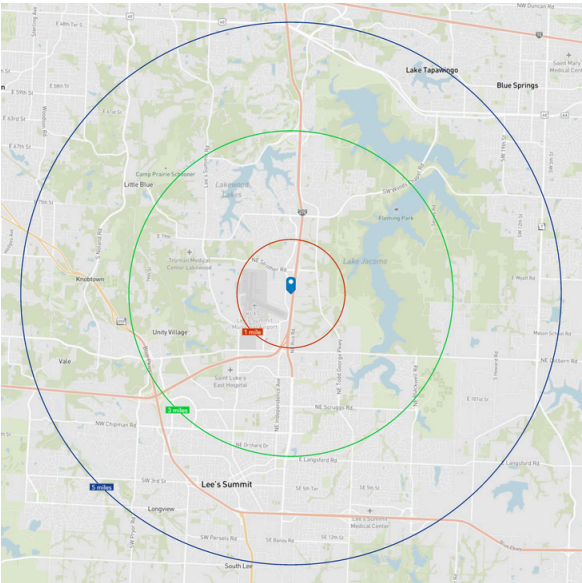
Lee's Summit, MO

 **JLL** SEE A BRIGHTER WAY

Property Overview & Demographics

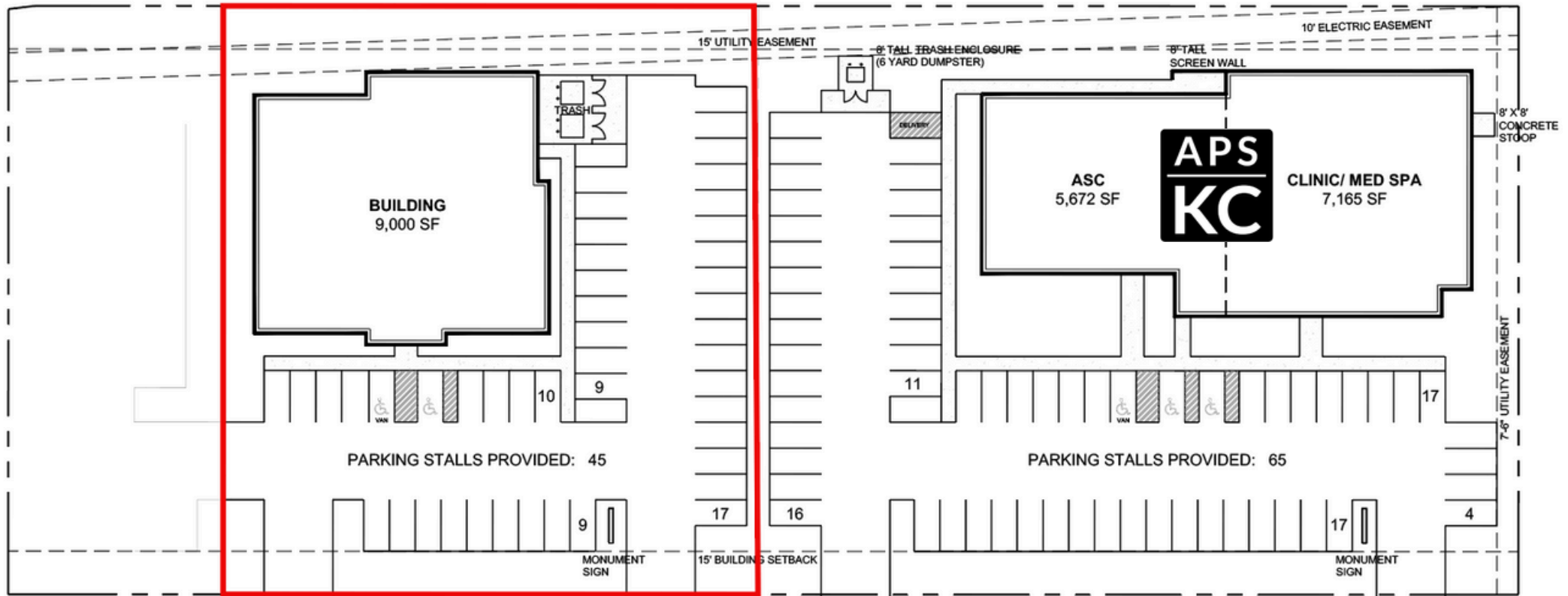
- Immediate access and visibility to I-470 and 291 Hwy
- Adjacent to Lee’s Summit Municipal Airport and Lake Jacomo
- Utilities in place to property line
- Located near the Strothers & I-470 interchange, with visibility from I-470 with 81,876 VPD.

Lee’s Summit population growth of 45% since 2000



Estimated population	665	32,385	102,359
Estimated households	262	12,580	40,659
Est. Average HH income	\$135,235	\$127,819	\$121,625

Concept Site Plan



Overall Specs

Acreage: 0.89 Acres
Building: 9,000 SF
Parking: 5 Stalls / 1,000 SF
Zoning: Planned Mixed Use District

Associated Plastic Surgeons of Kansas City recently broke ground on the lot to the south. The building will feature an Ambulatory Surgery Center and a Med Spa.

Jim Gates, SIOR

Executive Vice President

jim.gates@jll.com

913 469 4638

jll.com

Jones Lang LaSalle Brokerage, Inc. a Licensed Real Estate Broker