



**\$1.50/SF, Gross
AS-IS**

For lease

4590 Patrick Henry Drive, Santa Clara



Joel Yungen

RE License #01850588
M +1 724 288 5001
joel.yungen@jll.com

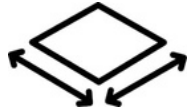
David Ross

RE License #02052598
M +1 415 450 8588
dave.ross@jll.com

Jones Lang LaSalle Brokerage, Inc. Real Estate License #01856260

4590

Patrick Henry Dr.



43,080 SF

2.79 Acres



1989

YEAR BUILT



ML

Light Industrial



139 Spaces

3.23 / 1,000 SF



Up to 20'

Clear Height
in the Warehouse



1,600 Amps, 120/208V, 3Ph, 4W

Silicon Valley Power



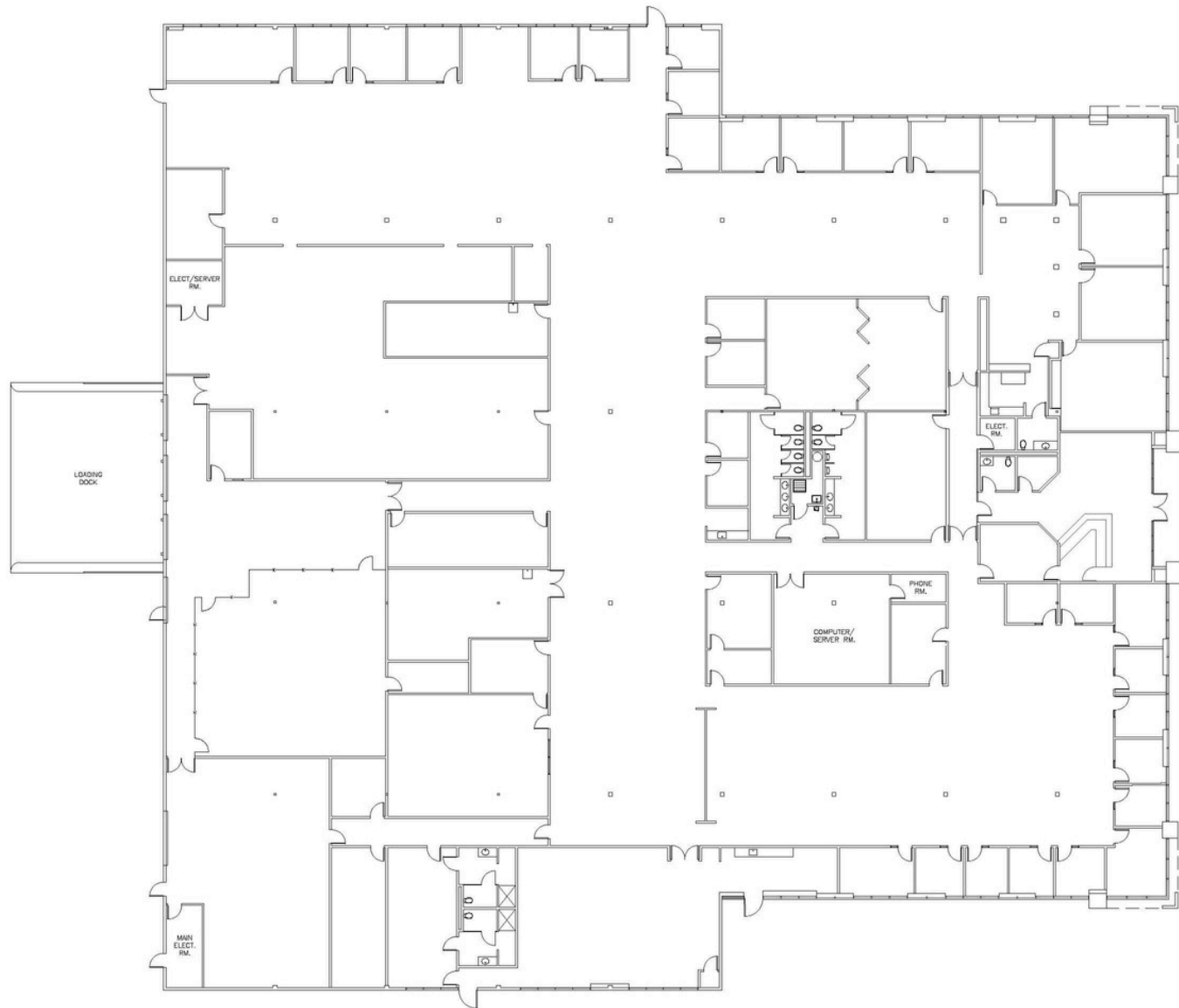
3 / 2

Dock High / Grade-Level Doors



4590 Patrick Henry Dr. Santa Clara

43,080 SF



4590 Patrick Henry Dr. Santa Clara



4590 PATRICK HENRY

For over 200 years, JLL (NYSE: JLL), a leading global commercial real estate and investment management company, has helped clients buy, build, occupy, manage and invest in a variety of commercial, industrial, hotel, residential and retail properties. A Fortune 500® company with annual revenue of \$20.9 billion and operations in over 80 countries around the world, our more than 103,000 employees bring the power of a global platform combined with local expertise. Driven by our purpose to shape the future of real estate for a better world, we help our clients, people and communities SEE A BRIGHTER WAY™. JLL is the brand name, and a registered trademark, of Jones Lang LaSalle Incorporated. For further information, visit jll.com.



Joel Yungen

RE License #01850588

M +1 724 288 5001

joel.yungen@jll.com

David Ross

RE License #02052598

M +1 415 450 8588

dave.ross@jll.com