



Land for Sale – Back on market

±55 acres available along Warren Ranch Rd off Highway 290

16863 Warren Ranch Road, Hockley, Texas

Primary contacts:

David Holland
Vice President
+1 713 888 4095
david.holland@am.jll.com

Anya Marmuscak
Senior Vice President
+1 713 425 5833
anya.marmuscak@am.jll.com



Property details

±55 acres available along Warren Ranch Rd off Highway 290

16863 Warren Ranch Road, Hockley, Texas



16863 Warren Ranch Rd, Hockley, TX

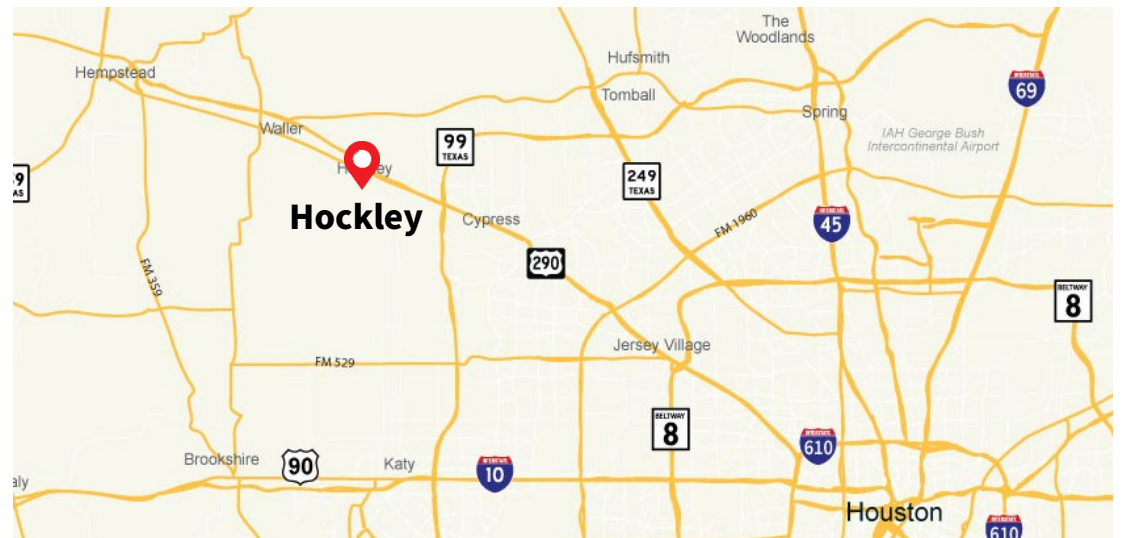
The property consists of approximately 55 acres of undeveloped land, situated along Warren Ranch Road, just south of Highway 290 in Hockley, Texas.

- Exact boundary for property TBD & flexible
- ±467' frontage on Warren Ranch Road
- Contact broker for pricing

Primary contacts:

David Holland
Vice President
+1 713 888 4095
david.holland@am.jll.com

Anya Marmuscak
Senior Vice President
+1 713 425 5833
anya.marmuscak@am.jll.com



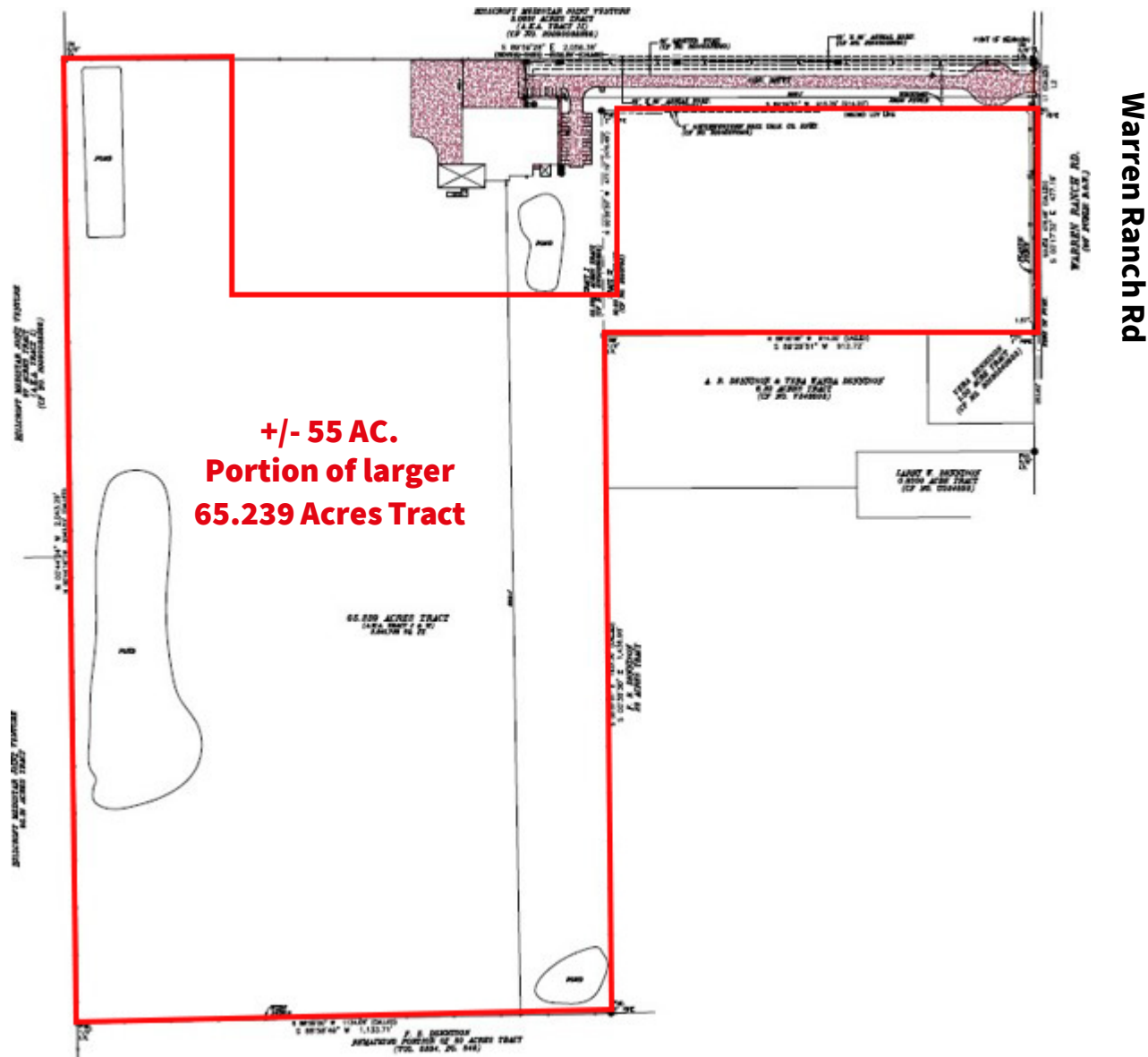
The information contained herein is obtained from sources believed to be reliable; however, JLL makes no guarantees, warranties or representations as to the completeness or accuracy thereof. The presentation of this property is submitted subject to errors, omissions, change of price or conditions, and is subject to prior sale, lease or withdrawal without notice. ©2021 Jones Lang LaSalle IP, Inc. All rights reserved.



Property survey

±55 acres available along Warren Ranch Rd off Highway 290

16863 Warren Ranch Road, Hockley, Texas



Primary contacts:

David Holland
Vice President
+1 713 888 4095

david.holland@am.jll.com

Anya Marmuscak
Senior Vice President
+1 713 425 5833

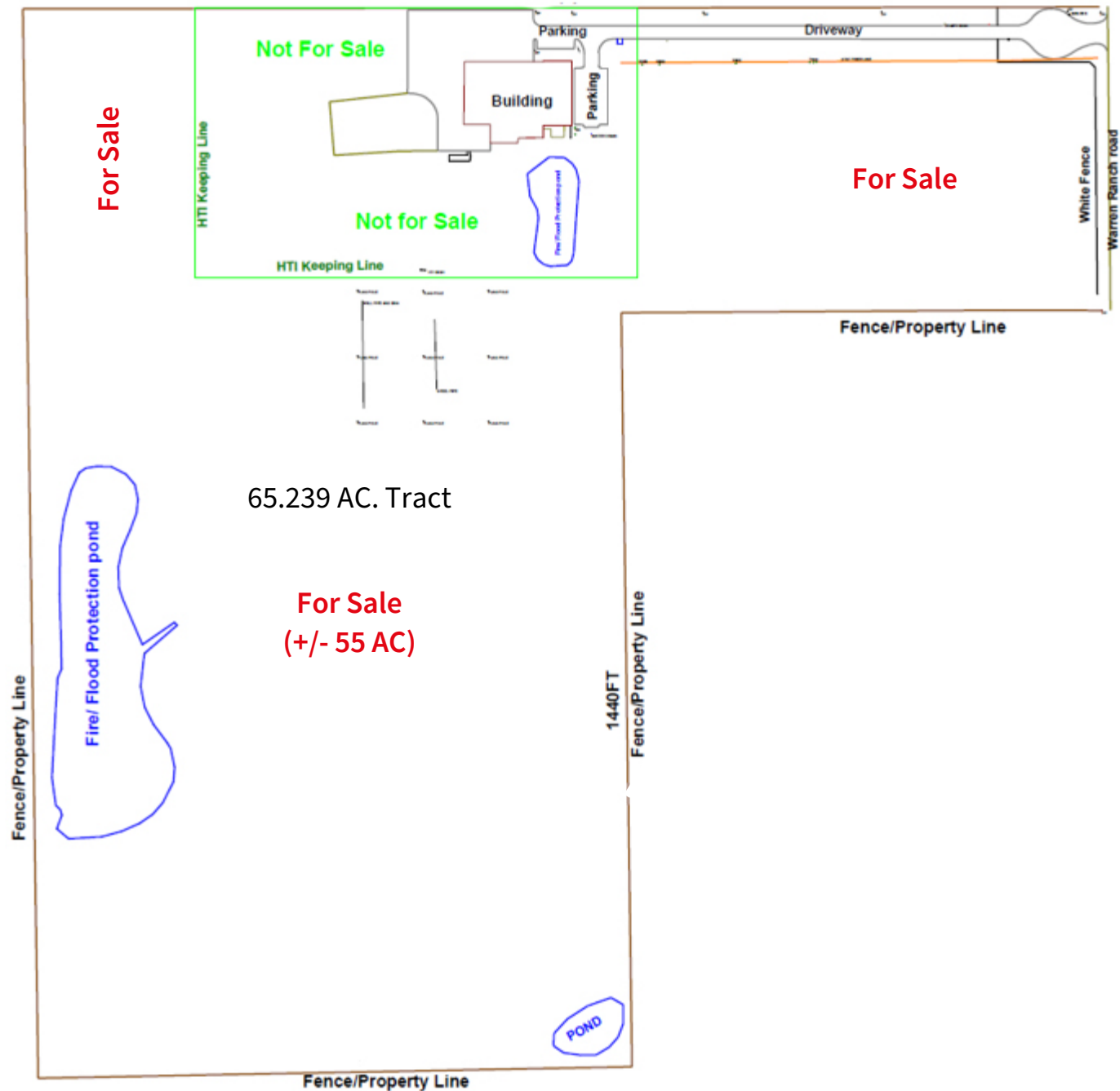
anya.marmuscak@am.jll.com



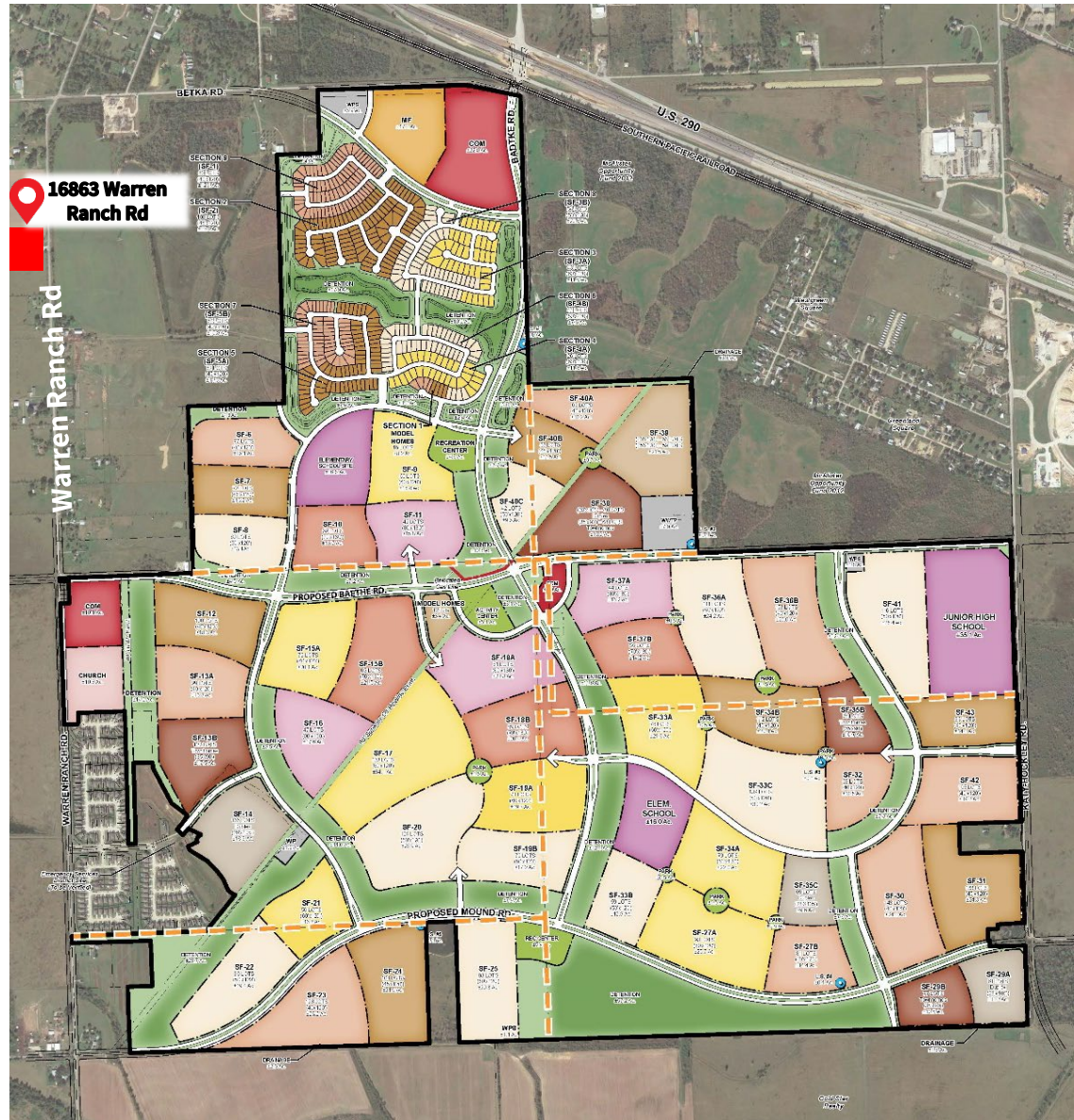
The information contained herein is obtained from sources believed to be reliable; however, JLL makes no guarantees, warranties or representations as to the completeness or accuracy thereof. The presentation of this property is submitted subject to errors, omissions, change of price or conditions, and is subject to prior sale, lease or withdrawal without notice. ©2021 Jones Lang LaSalle IP, Inc. All rights reserved.

Site plan

±55 acres available along Warren Ranch Rd off Highway 290
16863 Warren Ranch Road, Hockley, Texas



Nearby development



Primary contacts:

David Holland
Vice President
+1 713 888 4095
david.holland@am.jll.com

Anya Marmuscak
Senior Vice President
+1 713 425 5833
anya.marmuscak@am.jll.com

±55 acres available along Warren Ranch Rd off Highway 290
16863 Warren Ranch Road, Hockley, Texas

Jubilee, Harris County, Texas

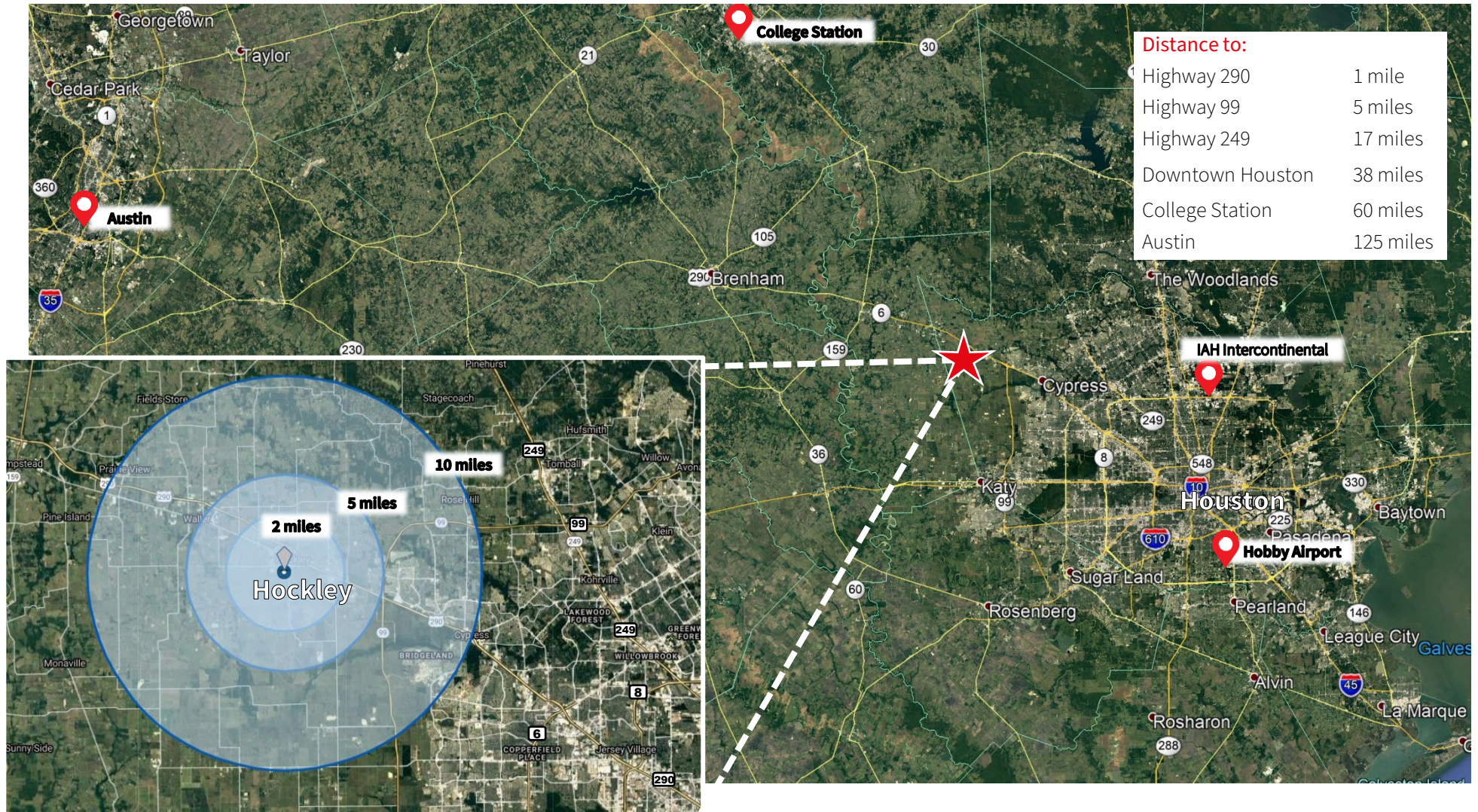
An affiliate of the Johnson Development Corporation is currently developing a 1,619-acre site in Hockley - future master planned community as of 2022. The first phase has started **ANYA PLS REWRITE** ☺



Location & demographics

±55 acres available along Warren Ranch Rd off Highway 290

16863 Warren Ranch Road, Hockley, Texas



Number of Households

| 2-mile | 5-miles | 10-miles |
|--------|---------|----------|
| 670 | 4,412 | 33,245 |



Median Age

| 2-mile | 5-miles | 10-miles |
|--------|---------|----------|
| 32.2 | 32.3 | 33.7 |



Estimated Population

| 2-mile | 5-miles | 10-miles |
|--------|---------|----------|
| 2,362 | 14,313 | 102,674 |



Average Household Income

| 2-mile | 5-miles | 10-miles |
|-----------|-----------|-----------|
| \$106,123 | \$102,632 | \$128,614 |

