

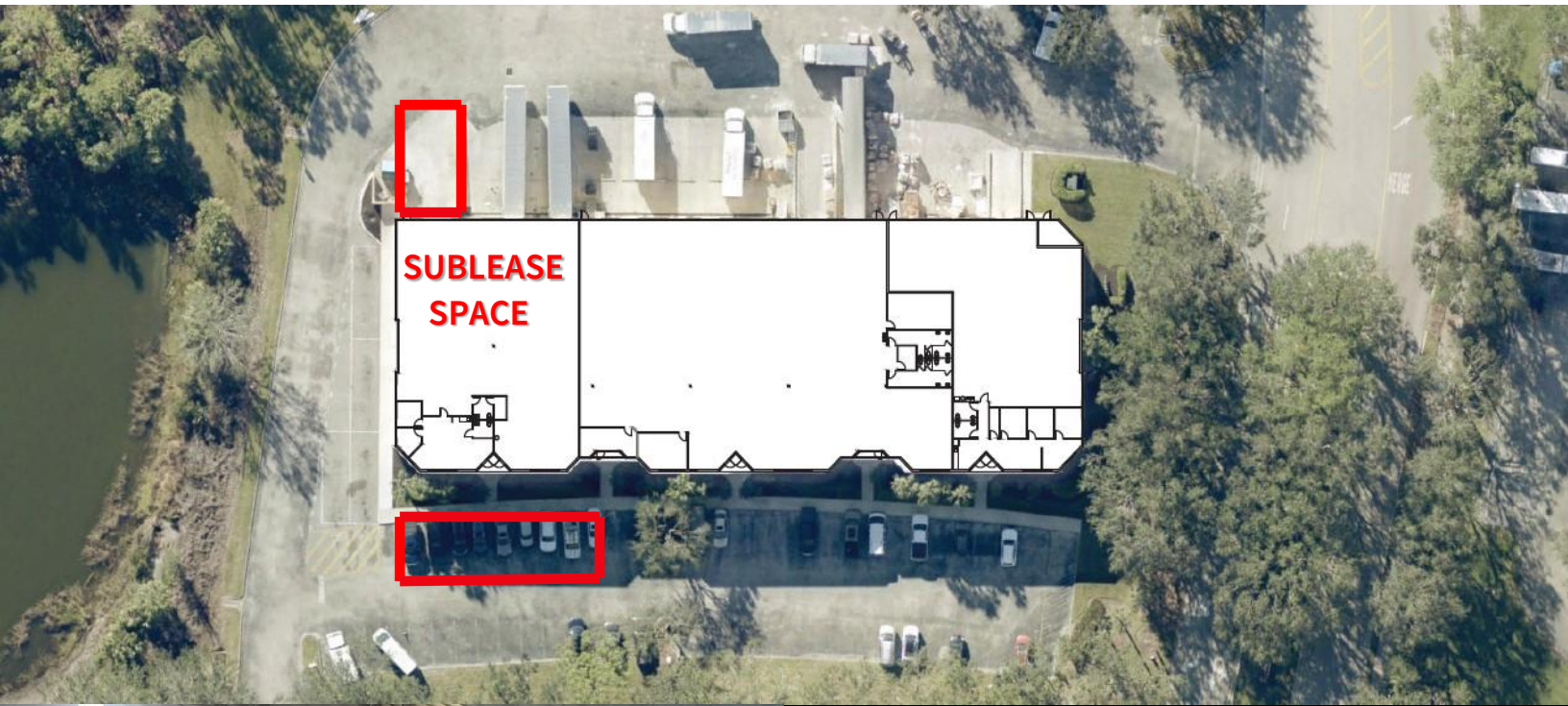


Westlinks Business Park: SUBLEASE

12100 Commerce Lakes Drive, Suites 1&2
Fort Myers, FL 33913



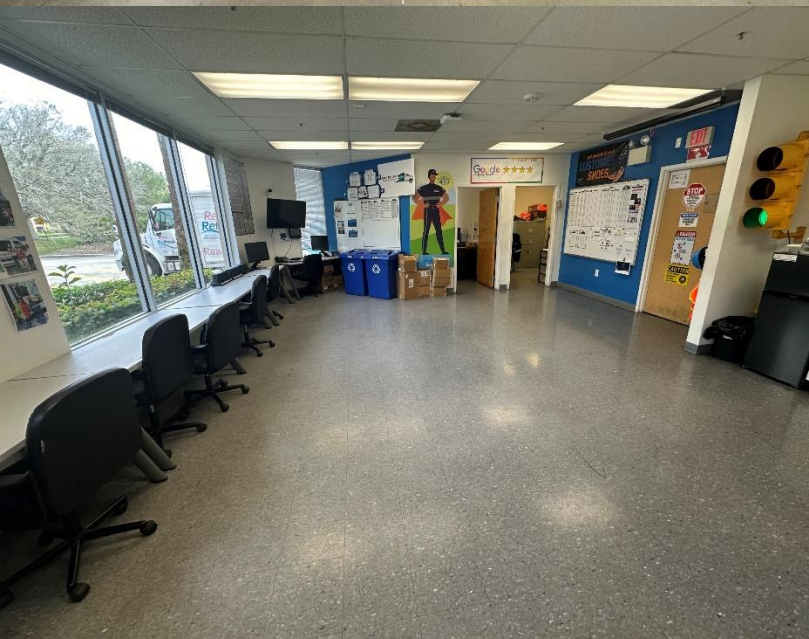
7,500 SF Flex Space for Sublease



Space Details

- 1 Ramp
- 1 Dock
- 18' Clear height
- 2 Private offices
- 2 Private restrooms
- Reception area
- Rate: Negotiable
- Remaining Term: 12/31/2031

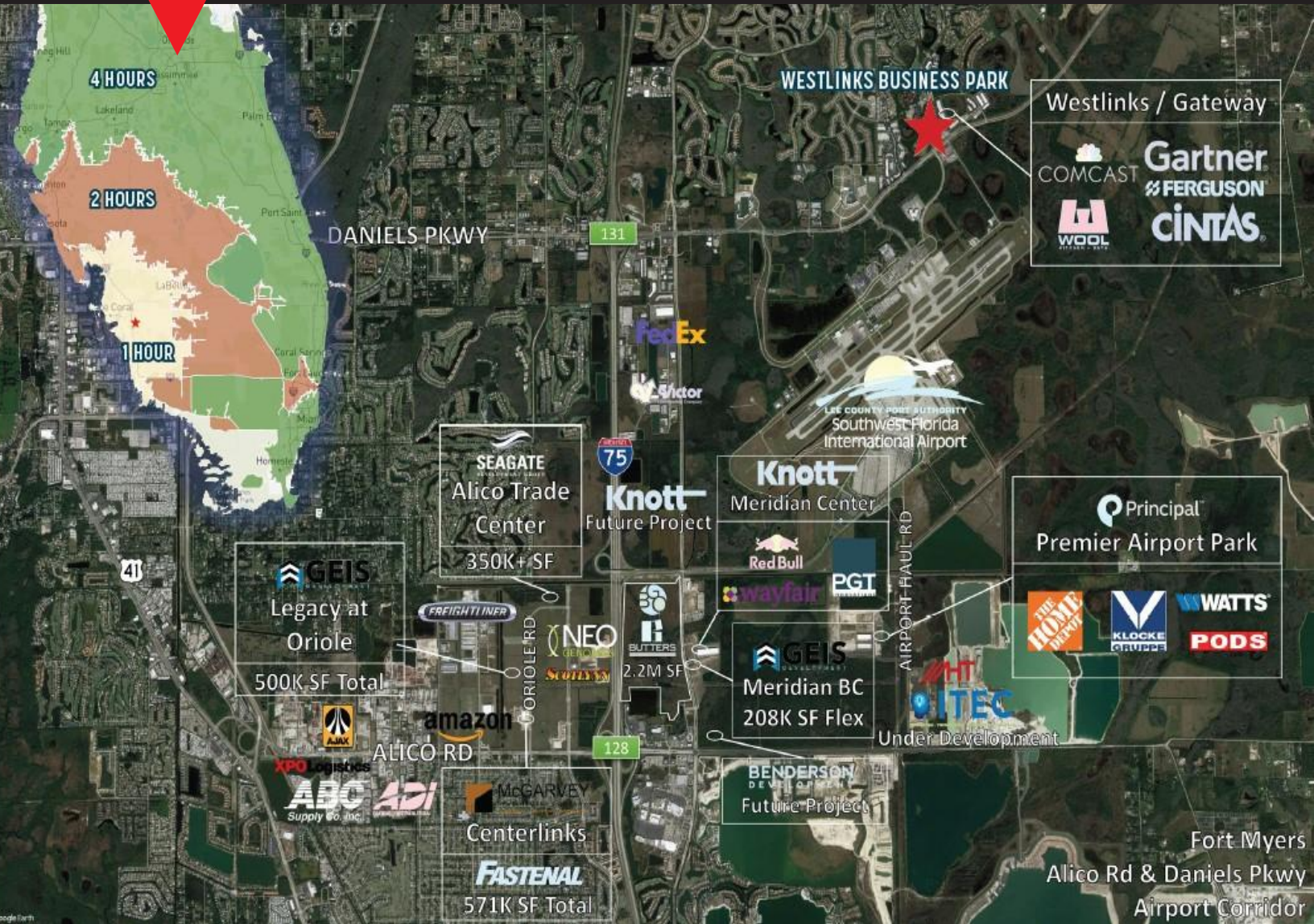
Subtenant parking highlighted in Red





12100 Commerce Lakes Drive, Suites 1 & 2

Fort Myers, FL 33913



Contact:

Brad Berzins, SIOR
Managing Director
+1 239 673 2765
Brad.Berzins@jll.com

Haley Blorstad
Associate
+1 239 571 5681
Haley.Blorstad@jll.com

