



# For Lease

**±8,532 SF available**

## Site features:

- ±8,532 SF with ±2,889 SF office
- ESFR Sprinkler System
- 24' Clear Height
- One (1) Dock, one (1) ramp
- Ample Parking
- Easy Access to I-10, Beltway 8, Grand Parkway and Highway 6
- **Lease Rate:** Call Broker

**Ten West Crossing 7  
22130 Merchants Way  
Suite 150  
Katy, TX 77449**

**Richard Quarles, SIOR**  
+1 713 888 4019  
[richard.quarles@jll.com](mailto:richard.quarles@jll.com)

**Jarret Venghaus, SIOR**  
+1 713 888 4035  
[jarret.venghaus@jll.com](mailto:jarret.venghaus@jll.com)

**Geoff Perrott**  
+1 713 888 4072  
[geoff.perrott@jll.com](mailto:geoff.perrott@jll.com)

**Eliza Klein**  
+1 713 425 1816  
[eliza.klein@jll.com](mailto:eliza.klein@jll.com)

## Location:

Ten West Crossing 7, 22330 Merchants Way is positioned on the northeast side of the Grand Parkway (99) and Interstate 10, which is located outside the city limits in Fort Bend County. The park offers convenient access to all major south/southwest thoroughfares (I-10, Beltway 8, Grand Parkway and Highway 6).



# For Lease

±8,532 SF available

Ten West Crossing 7

22130 Merchants Way, Suite 150 | Katy, TX 77449



Although information has been obtained from sources deemed reliable, JLL does not make any guarantees, warranties or representations, express or implied, as to the completeness or accuracy as to the information contained herein. Any projections, opinions, assumptions or estimates used are for example only. There may be differences between projected and actual results, and those differences may be material. JLL does not accept any liability for any loss or damage suffered by any party resulting from reliance on this information. If the recipient of this information has signed a confidentiality agreement with JLL regarding this matter, this information is subject to the terms of that agreement. ©2021 Jones Lang LaSalle IP, Inc. All rights reserved.

**EASTGROUP**  
PROPERTIES



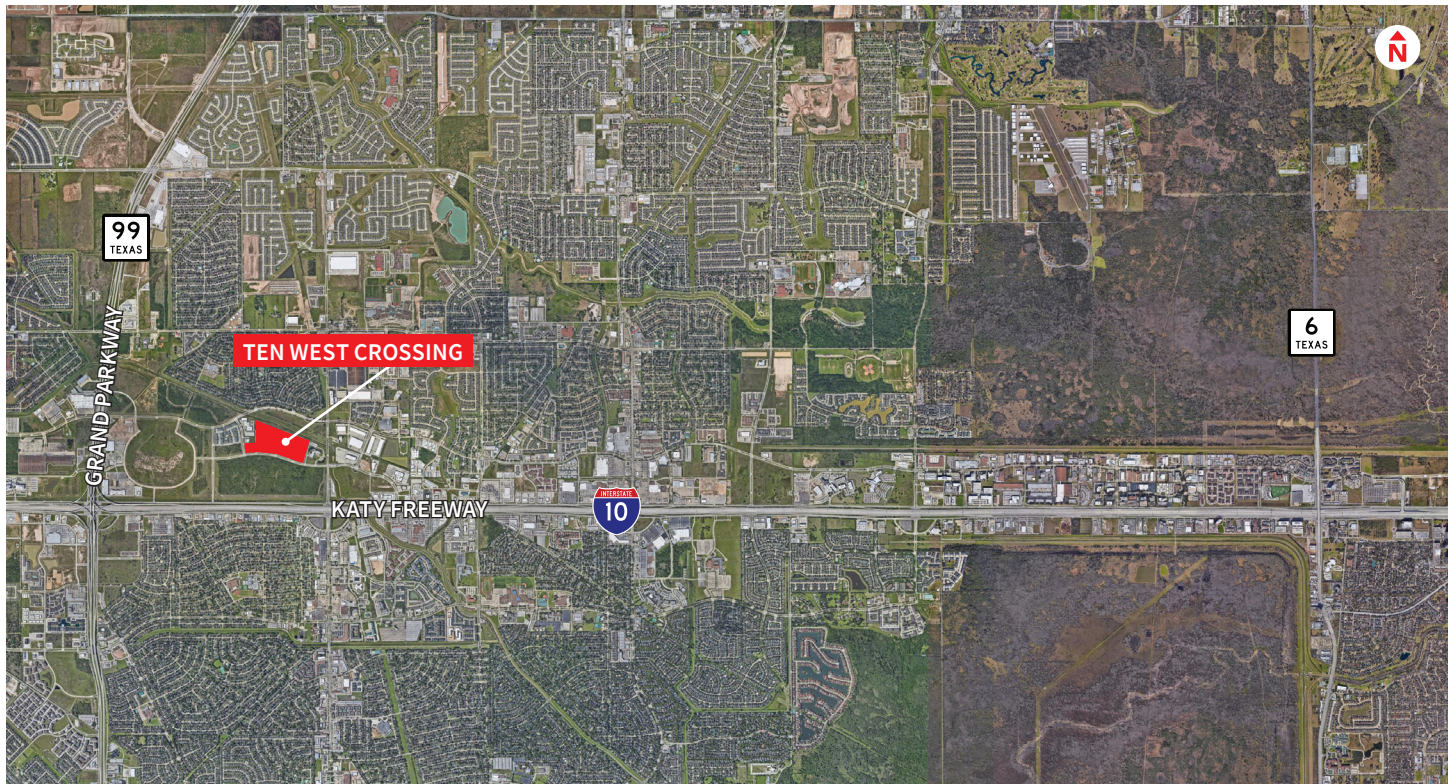
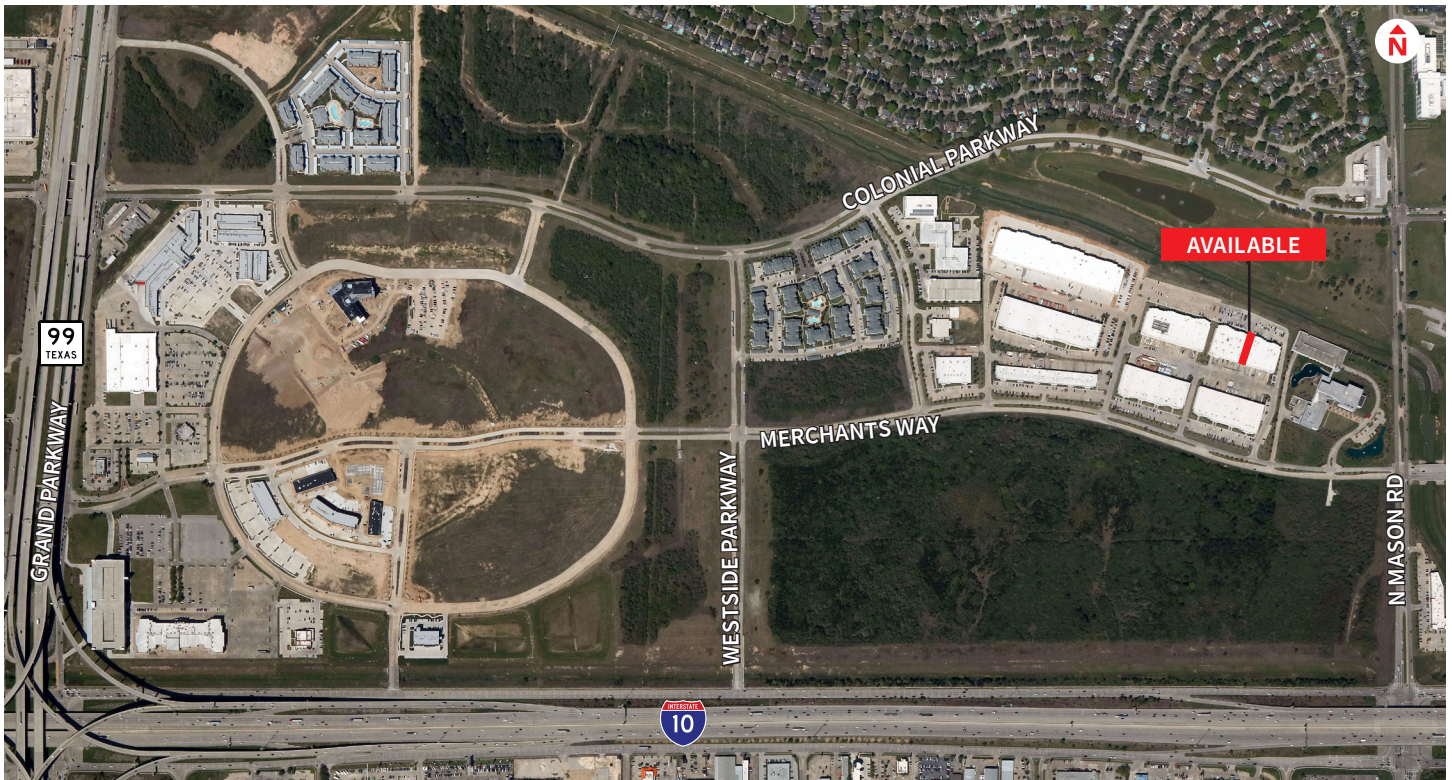


# For Lease

±8,532 SF available

Ten West Crossing 7

22130 Merchants Way, Suite 150 | Katy, TX 77449



Although information has been obtained from sources deemed reliable, JLL does not make any guarantees, warranties or representations, express or implied, as to the completeness or accuracy as to the information contained herein. Any projections, opinions, assumptions or estimates used are for example only. There may be differences between projected and actual results, and those differences may be material. JLL does not accept any liability for any loss or damage suffered by any party resulting from reliance on this information. If the recipient of this information has signed a confidentiality agreement with JLL regarding this matter, this information is subject to the terms of that agreement. ©2021 Jones Lang LaSalle IP, Inc. All rights reserved.

**EASTGROUP**  
PROPERTIES





# For Lease

±8,532 SF available

Ten West Crossing 7

22130 Merchants Way, Suite 150 | Katy, TX 77449



Although information has been obtained from sources deemed reliable, JLL does not make any guarantees, warranties or representations, express or implied, as to the completeness or accuracy as to the information contained herein. Any projections, opinions, assumptions or estimates used are for example only. There may be differences between projected and actual results, and those differences may be material. JLL does not accept any liability for any loss or damage suffered by any party resulting from reliance on this information. If the recipient of this information has signed a confidentiality agreement with JLL regarding this matter, this information is subject to the terms of that agreement. ©2021 Jones Lang LaSalle IP, Inc. All rights reserved.

**EASTGROUP**  
PROPERTIES

