

125TH STREET
BETWEEN ADAM
CLAYTON POWELL JR.
BLVD. & LENOX AVE.

PROMINENT CORNER ON THE BEST
BLOCK OF 125TH STREET

125 W.125TH RETAIL



MADISON
INTERNATIONAL
REALTY



125 W. 125TH STREET

Harlem's most prominent and visible corner sits immediately adjacent to the 19-story Adam Clayton Powell, Jr. State Office Building. Currently occupied by H&M, 125 W. 125th Street is located within a ½ block of the 2,3 subway stop, servicing 2.1 million annual passengers.

This 21,634-sf 2-level retail box is a one of a kind branding opportunity, surrounded by the area's top retailers – including Marshall's, CVS, Whole Foods, Burlington, Victoria's Secret, Raymour & Flanigan, Bath & Body Works and Starbucks.

The latest retailers to call Harlem home have all selected this corridor to plant their flag. Target, Trader Joe's, Sephora, Pandora and Raising Cane's will soon join this thriving block, further establishing the intersection of 125th Street and Lenox Avenue as Harlem's epicenter.

The Urban League Empowerment Center and **Studio Museum of Harlem**, both currently under construction, will bring an additional 75,000 sf of new office space, 170 affordable residential units, the Urban Civil Rights Museum and several neighborhood art galleries to the block as well.



125 W. 125TH STREET

THE APOLLO
THEATER MUSIC
HALL

Harlem's crown jewel and landmark is visited by 1.3 million people each year.



ADAM
CLAYTON
POWELL JR.
STATE OFFICE
BUILDING

19-story office building.

THE
OPPORTUNITY

125 W. 125TH ST.



ADDITIONAL
RETAIL
AVAILABLE

HARLEM CENTER



NATIONAL
URBAN LEAGUE
EMPOWERMENT
CENTER

415,000 sf development, including league headquarters, Urban Civil Rights Museum, 170 units of affordable housing and office space.



THE STUDIO MUSEUM
IN HARLEM

Currently under construction, this building will be home to an art gallery, education space and communal space for local Harlem artists.



THE HARLEM
NEIGHBORHOOD

- 420,000+ monthly pedestrian visitors on average at the Northwest Corner of 125th Street & Malcom X Boulevard
- 6 major subways & 11 different buses providing easy access
- 60 million annual transit riders
- 68,000+ employees
- 250,000+ residents
- 112,000+ housing units
- 72,000+ students and faculty at Columbia & CUNY



125 W. 125TH STREET

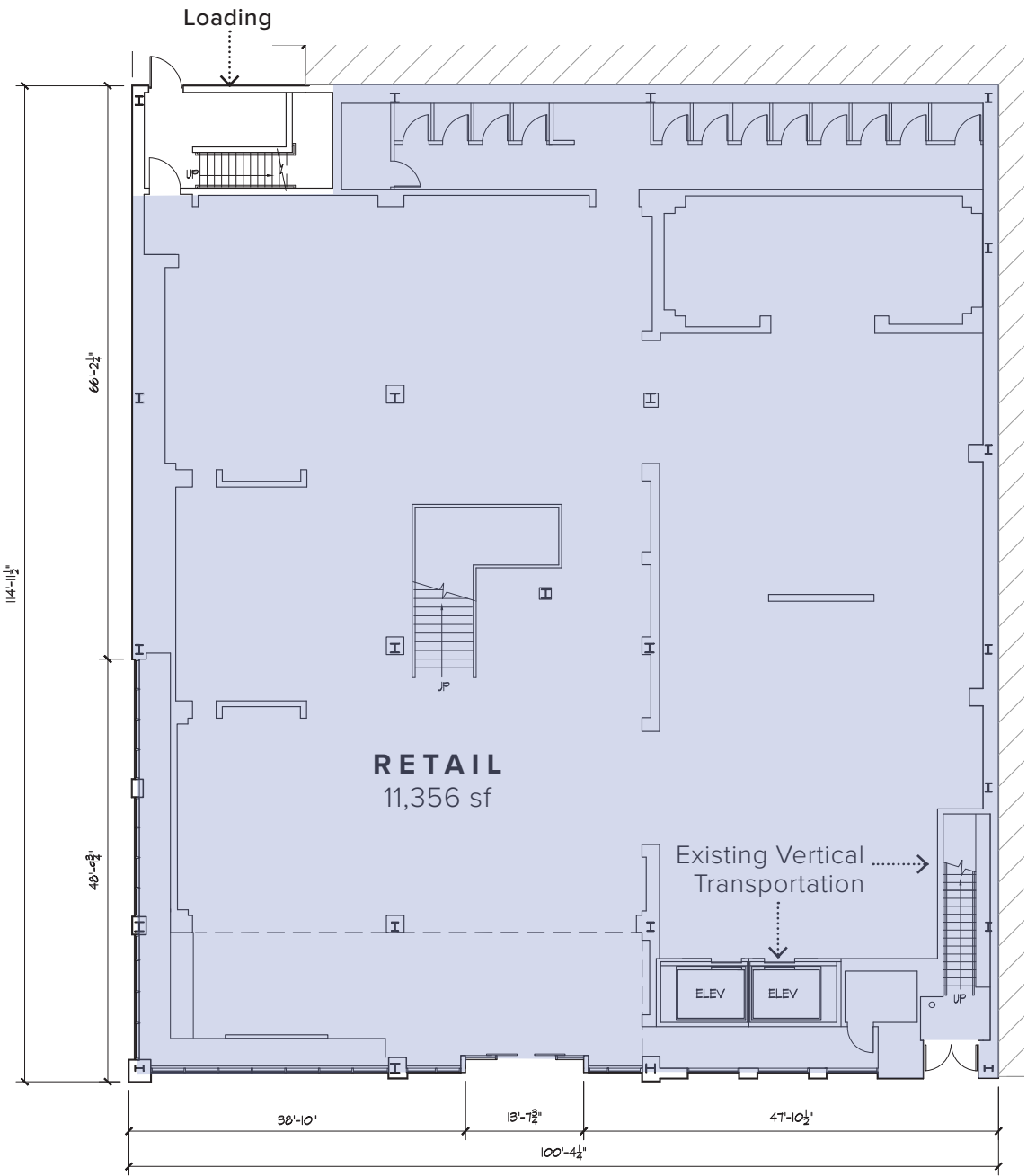
SINGLE TENANT
SCENARIO

SIZE	FRONTAGE:
Ground Floor: 11,356 sf	100'4" on W. 125th Street 114'11" facing Plaza
Second Floor: 10,274 sf	

CEILING HEIGHTS
Ground Floor: 17'8"
Second Floor: 17'5"

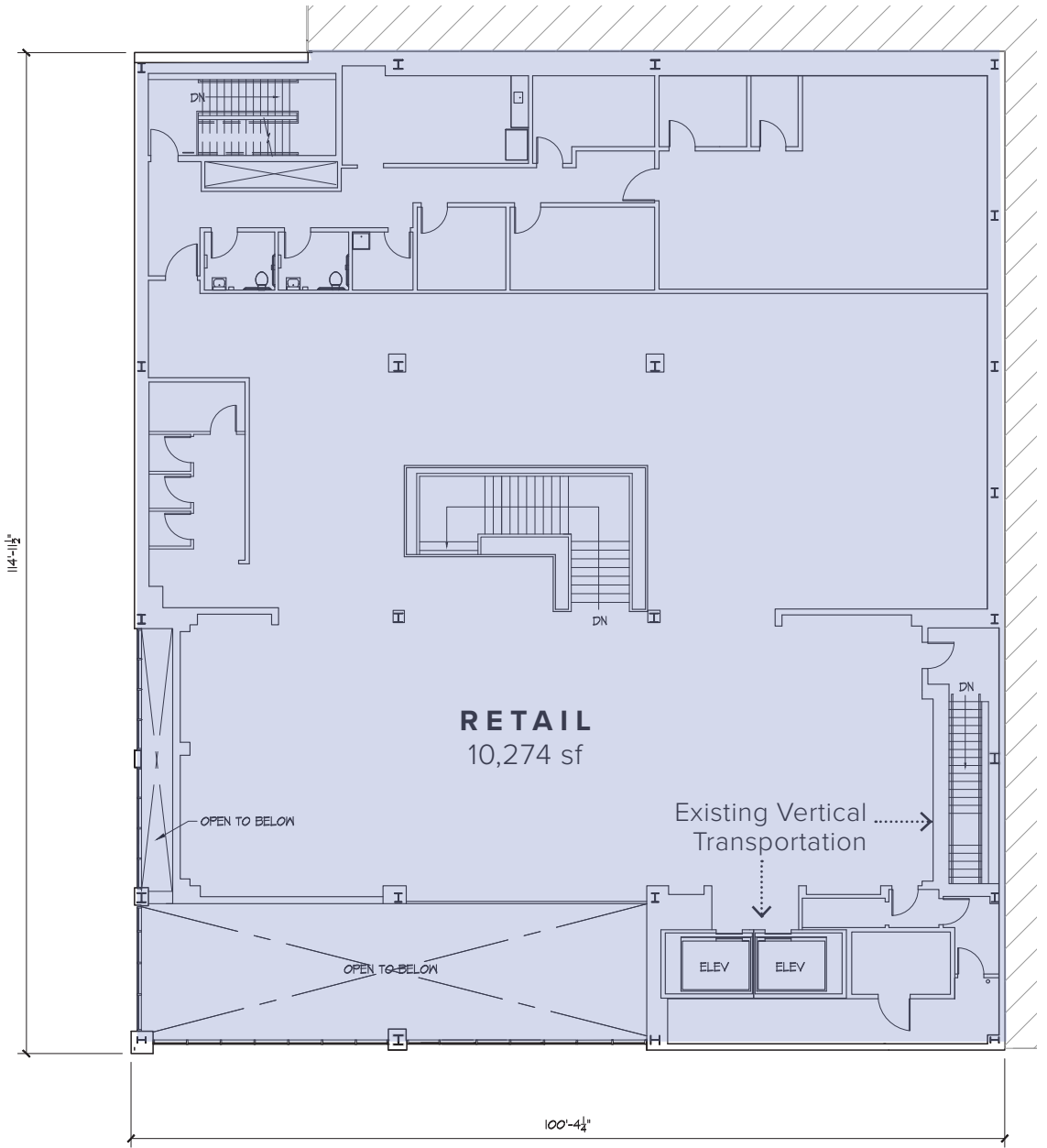
ASKING RENT
Available upon request

GROUND FLOOR



125th Street

SECOND FLOOR



125th Street



TWO TENANT
DIVISION SCENARIO

TENANT A SIZE
Ground Floor:
2,887 sf

FRONTAGE:
30'9" on W. 125th Street
97'4" facing Plaza

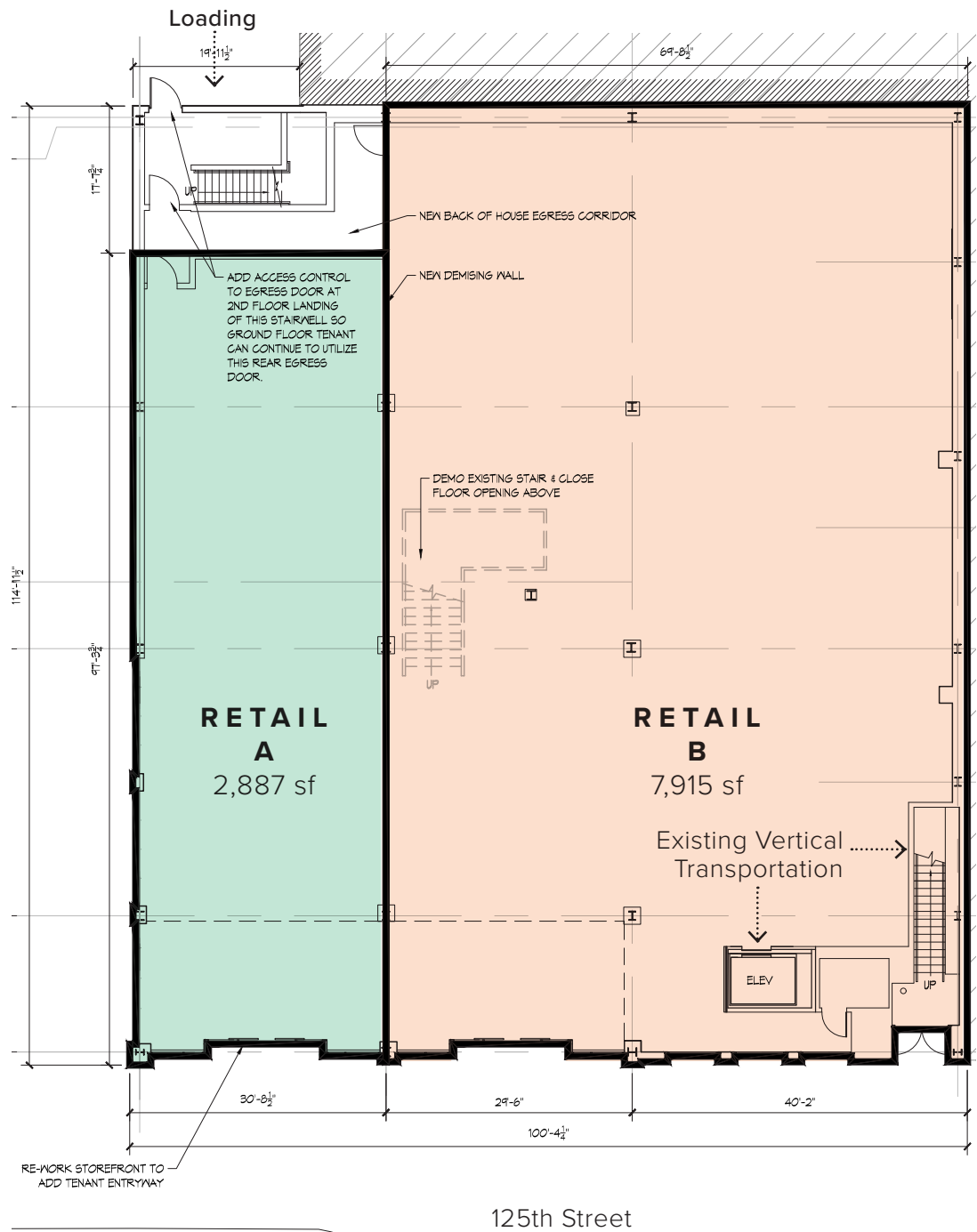
TENANT B SIZE
Ground Floor:
7,915 sf
Second Floor:
10,448 sf

FRONTAGE:
Ground Floor:
69'8" on W. 125th st.
Second Floor:
214' wraparound

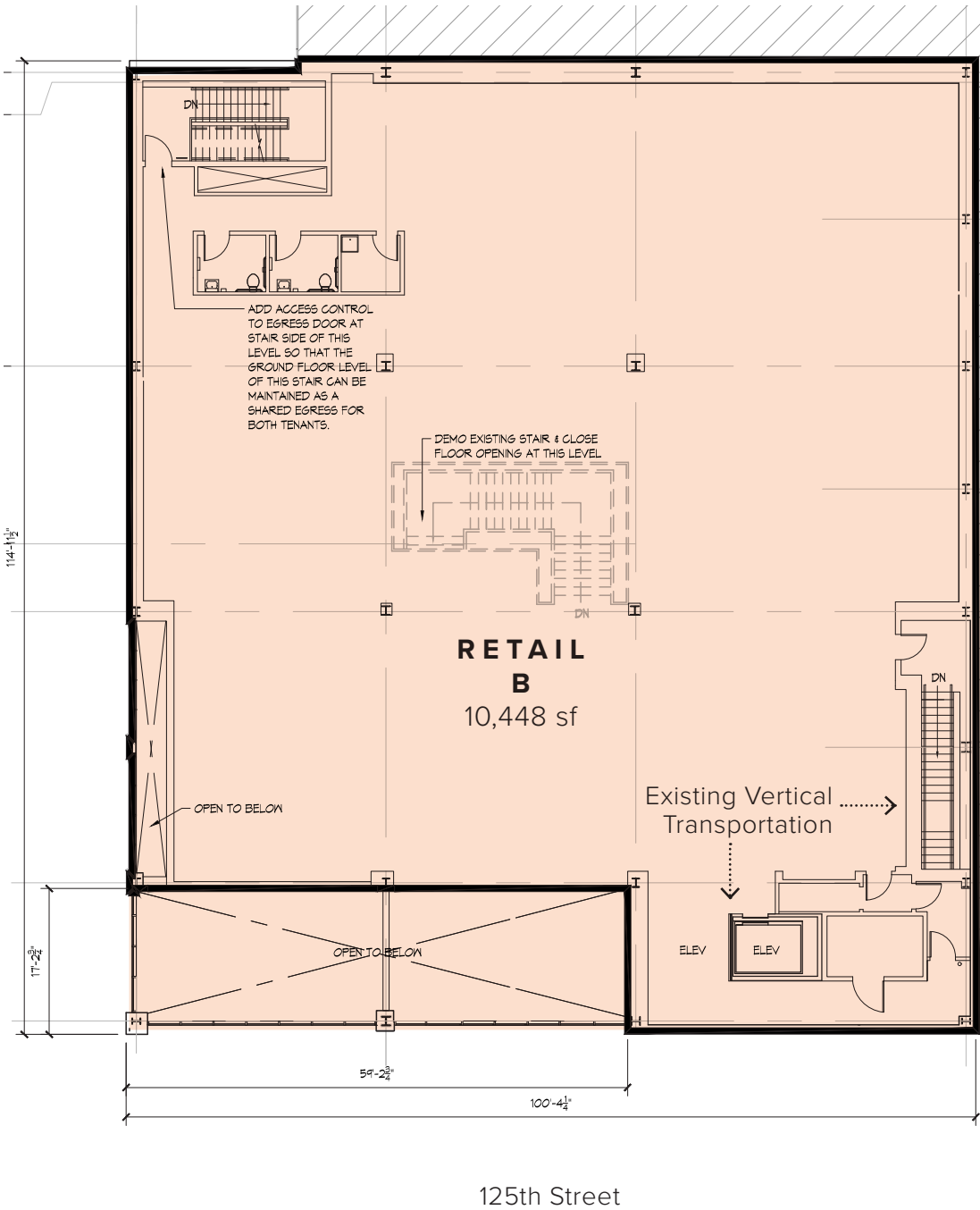
CEILING HEIGHTS
Ground Floor:
17'8"
Second Floor:
17'5"

ASKING RENT
Available upon
request

GROUND FLOOR



SECOND FLOOR





FOR LEASING INFORMATION PLEASE CONTACT:

Ariane Girard

212.209.4511

ariane.girard@jll.com

Hilary Sievers

212.812.6449

hilary.sievers@jll.com

Erin Grace

212.812.5882

erin.grace@jll.com



MADISON
INTERNATIONAL
REALTY



Jones Lang LaSalle Brokerage, Inc. | 330 Madison Avenue New York, NY 10017
DISCLAIMER

Although information has been obtained from sources deemed reliable, neither Owner nor JLL makes any guarantees, warranties or representations, express or implied, as to the completeness or accuracy as to the information contained herein. Any projections, opinions, assumptions or estimates used are for example only. There may be differences between projected and actual results, and those differences may be material. The Property may be withdrawn without notice. Neither Owner nor JLL accepts any liability for any loss or damage suffered by any party resulting from reliance on this information. If the recipient of this information has signed a confidentiality agreement regarding this matter, this information is subject to the terms of that agreement.

©2023 Jones Lang LaSalle IP, Inc. All rights reserved.