




For Lease  
24,350 SF

# For lease

6312 Cane Run Road  
Louisville, Kentucky 40258  
24,350 SF manufacturing/distribution building

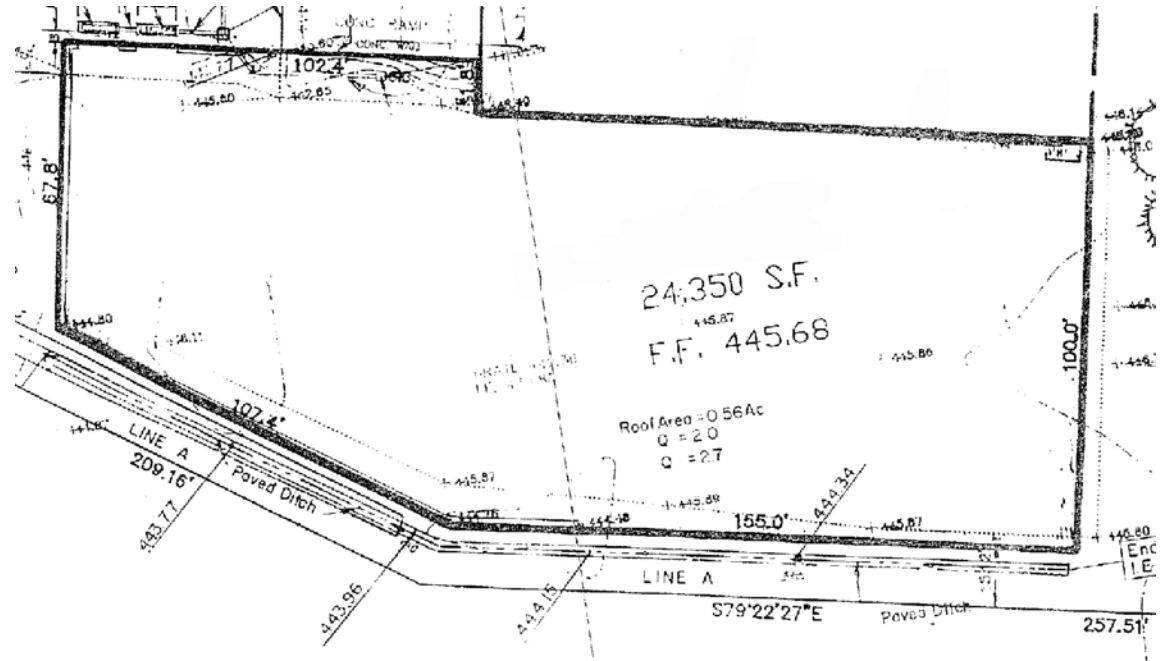
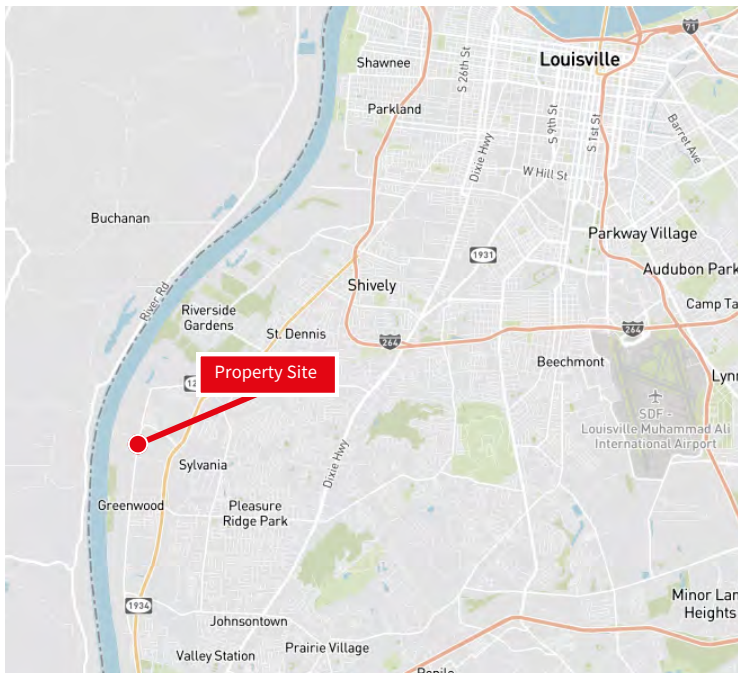
**Stephen C. Lannert, SIOR, CCIM, GRI**  
Executive Vice President  
Steve.Lannert@jll.com  
+1 502 394 2508

 **JLL** SEE A BRIGHTER WAY

[jll.com](https://www.jll.com)

# Property specifications

- 24,350 SF
- 23,824 SF warehouse; 525 SF office
- Fenced yard
- 100 amp, 277/480 volt, 1 & 3 phase
- 1" water line; 4" fire line
- 1" medium pressure gas line
- 6" sewer line
- 71 parking spaces
- Metal Halide lighting



- 2 docks and 2 levelers
- 20' clear height
- Wet sprinkler system
- M-3 zoning
- Located in the Riverport submarket
- 4 miles to I-264 and the Snyder Freeway
- 1 mile from Ohio River Port
- 10.9 miles from Louisville International Airport
- Built in 1991

Although information has been obtained from sources deemed reliable, JLL does not make any guarantees, warranties or representations, express or implied, as to the completeness or accuracy as to the information contained herein. Any projections, opinions, assumptions or estimates used are for example only. There may be differences between projected and actual results, and those differences may be material. JLL does not accept any liability for any loss or damage suffered by any party resulting from reliance on this information. If the recipient of this information has signed a confidentiality agreement with JLL regarding this matter, this information is subject to the terms of that agreement. ©2024. Jones Lang LaSalle Brokerage, Inc. All rights reserved.