

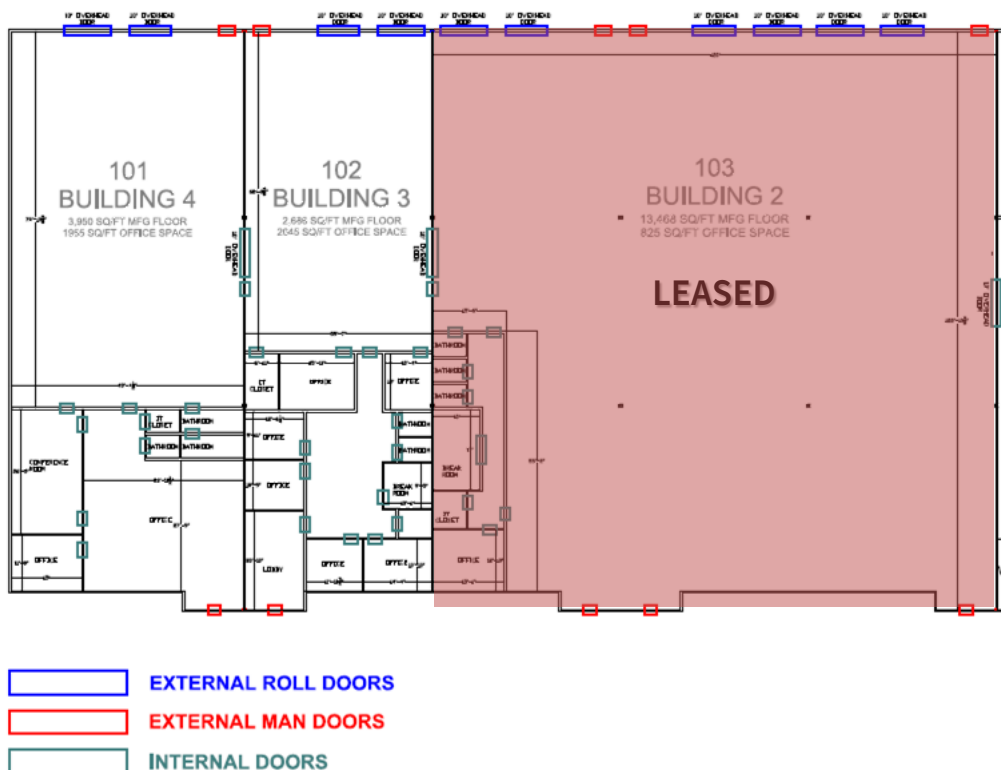
A large red location pin graphic with a black outline, featuring three concentric circles at the top, positioned on the left side of the image.

# Gatewood Corporate Center: SUBLEASE

3155 Lakewood Ranch Blvd, Suites 101 & 102  
Bradenton, FL 34211



# 4,731 – 10,636 SF Flex/Industrial for Sublease



## Space Details

- Suite 101: 5,905 SF
- Suite 102: 4,731 SF
- Suites 101 & 102: 10,636 SF
- 2 Ramped Drive-ins
- 2 Docks
- 24' Clear height
- 3 : 1,000 Parking ratio
- Rate: Negotiable
- Remaining Term: 07/31/2030

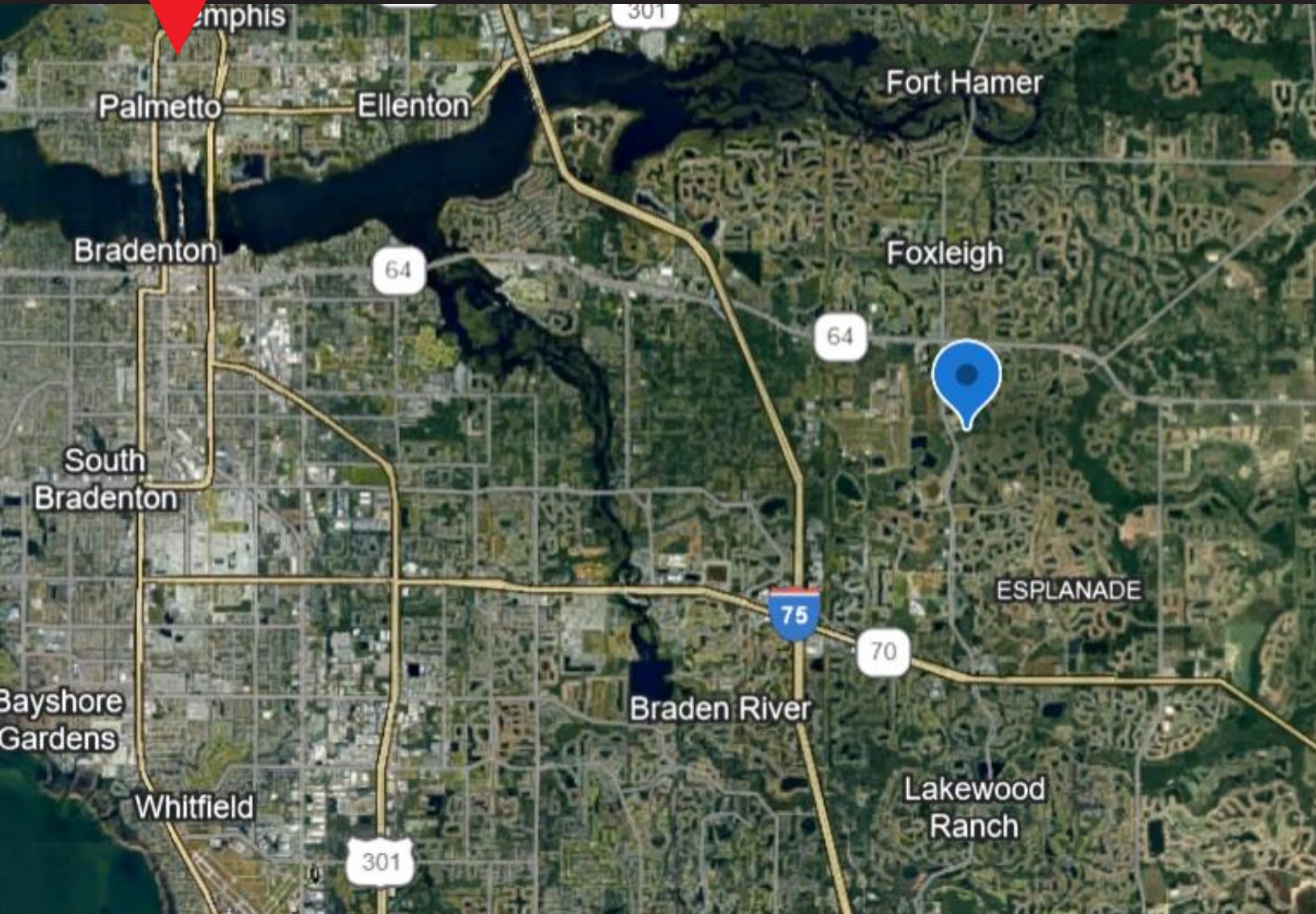






# 3155 Lakewood Ranch Blvd, Suites 101 & 102

Bradenton, FL 34211



## Contact:

### **Brad Berzins, SIOR**

Managing Director

+1 941 404 2668

[Brad.Berzins@jll.com](mailto:Brad.Berzins@jll.com)

### **Haley Blorstad**

Associate

+1 239 571 5681

[Haley.Blorstad@jll.com](mailto:Haley.Blorstad@jll.com)



Although information has been obtained from sources deemed reliable, JLL does not make any guarantees, warranties or representations, express or implied, as to the completeness or accuracy as to the information contained herein. Any projections, opinions, assumptions or estimates used are for example only. There may be differences between projected and actual results, and those differences may be material. JLL does not accept any liability for any loss or damage suffered by any party resulting from reliance on this information. If the recipient of this information has signed a confidentiality agreement with JLL regarding this matter, this information is subject to the terms of that agreement. ©2024, Jones Lang LaSalle IP, Inc. All rights reserved.