

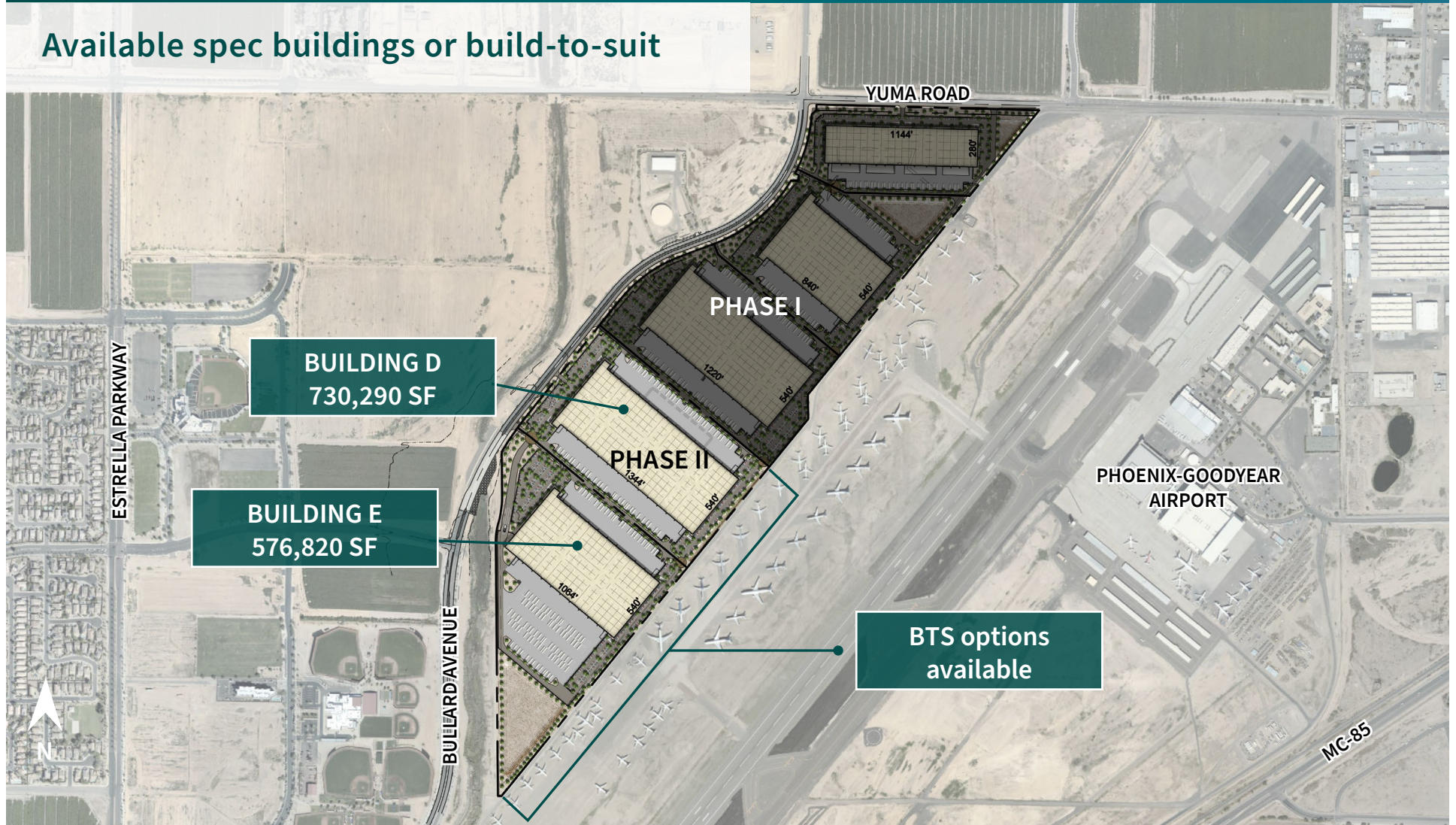
# Airpark Logistics Center

Industrial Space For Lease



PHASE II | Bullard Avenue & Yuma Road, Goodyear, AZ

Available spec buildings or build-to-suit



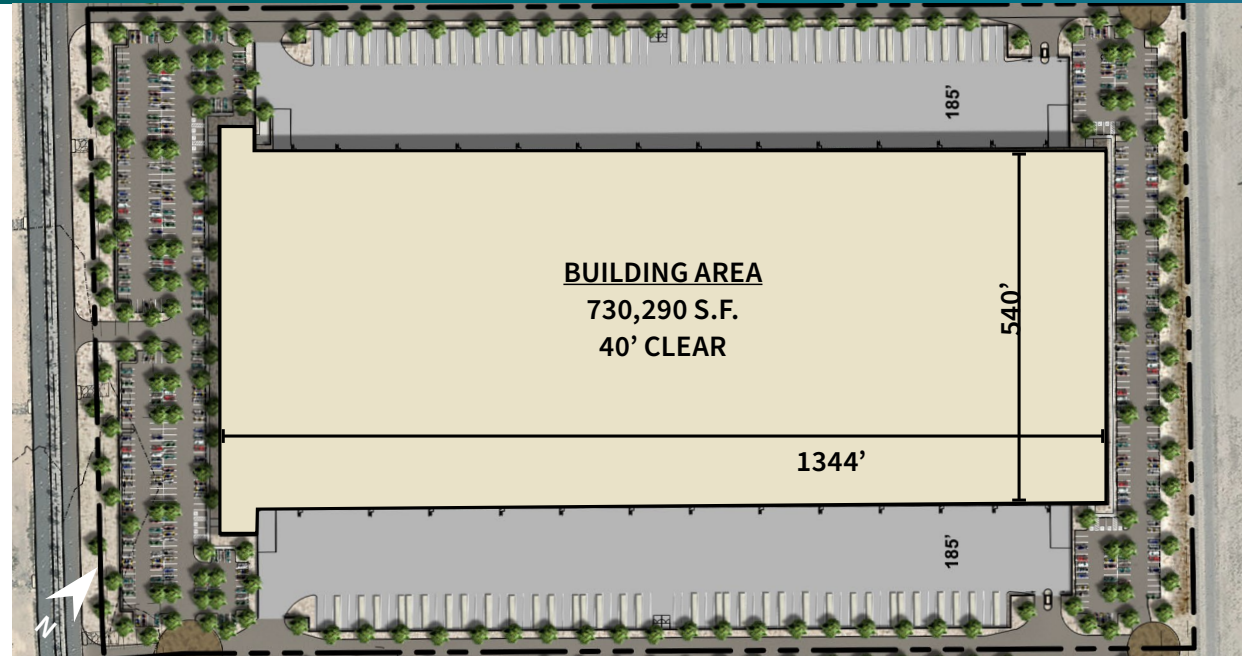


# 730,290 SF (Divisible)

Industrial Space For Lease



## BUILDING D - FUTURE DEVELOPMENT



### FACILITY

- ±730,290 SF building size
- 40' clear height
- 150 dock high doors; 4 grade level doors
- 50' x 56' column spacing
- 70' speed bays
- 569 auto parking stalls / 168 trailer parking stalls
- 185' truck court
- Utilities
  - Electrical - 6,000A 277/480v
  - Roof - 60 mil white TPO, R38
  - Office - To suit

### LOCATION

- Located adjacent to Phoenix-Goodyear Airport
- ±1.5 miles to full diamond interchange at I-10 and Bullard Avenue
- ±4.5 miles to Loop 303 interchange
- I-1 zoning
- Multiple access points
- Foreign Trade Zone capable

### ADVANTAGES AND AMENITIES

- Access to the Prologis Essentials platform, which includes:
  - [Operations Essentials](#)
  - [Energy Essentials](#)
  - [Workforce Essentials](#)
  - [Mobility Essentials](#)
  - [Digital Essentials](#)

**Your single-source service for efficient move-in and operations: [prologisessentials.com](https://www.prologis.com)**

# 576,820 SF (Divisible)

Industrial Space For Lease



## BUILDING E - FUTURE DEVELOPMENT



### FACILITY

- ±576,820 SF building size
- 40' clear height
- 110 dock high doors; 4 grade level doors
- 50' x 56' column spacing
- 70' speed bays
- 580 auto parking stalls / 208 trailer parking stalls
- 370' and 185' truck court
- Utilities
  - Electrical - 6,000A 277/480v
  - Roof - 60 mil white TPO, R38
  - Office - To suit

### LOCATION

- Located adjacent to Phoenix-Goodyear Airport
- ±1.5 miles to full diamond interchange at I-10 and Bullard Avenue
- ±4.5 miles to Loop 303 interchange
- I-1 zoning
- Multiple access points
- Foreign Trade Zone capable

### ADVANTAGES AND AMENITIES

- Access to the Prologis Essentials platform, which includes:
  - [Operations Essentials](#)
  - [Energy Essentials](#)
  - [Workforce Essentials](#)
  - [Mobility Essentials](#)
  - [Digital Essentials](#)

**Your single-source service for efficient move-in and operations: [prologisessentials.com](https://www.prologisessentials.com)**



# Airpark Logistics Center

Industrial Space For Lease



## PHASE II

### JLL

Riley Gilbert  
riley.gilbert@jll.com  
ph +1 602 282 6271  
cell +1 480 628 5590  
4300 E Camelback Road  
Suite 100  
Phoenix, AZ 85018 USA

### JLL

John Lydon  
john.lydon@jll.com  
ph +1 602 282 6326  
cell +1 773 617 6511  
4300 E Camelback Road  
Suite 100  
Phoenix, AZ 85018 USA



### Prologis

Jeff Foster  
jfooster@prologis.com  
ph +1 602 474 8383  
cell +1 480 280 4919  
2525 E Camelback Rd  
Suite 400  
Phoenix, AZ 85016 USA

### JLL

Marc Hertzberg  
marc.hertzberg@jll.com  
ph +1 602 282 6269  
cell +1 602 625 2804  
4300 E Camelback Road  
Suite 100  
Phoenix, AZ 85018 USA

### JLL

Patrick Harlan  
pat.harlan@jll.com  
ph +1 602 282 6298  
cell +1 602 549 6350  
4300 E Camelback Road  
Suite 100  
Phoenix, AZ 85018 USA

### Prologis

Alicia Saxby  
asaxby@prologis.com  
ph +1 602 474 8364  
cell +1 602 284 3435  
2525 E Camelback Rd  
Suite 400  
Phoenix, AZ 85016 USA



No warranty or representation, expressed or implied, is made as to the accuracy of the information contained herein, and same is submitted subject to error and omissions.