



*3,258 sf Creative Office Opportunity
at the Front Door of Union Station*



1708 WYNKOOP
AT DENVER UNION STATION

One of the truly iconic historic renovations in downtown Denver.



VIEW FROM THE FRONT DOOR

Property Highlights

- Premier creative office space in the heart of LoDo
- High-identity location directly across from Union Station
- Historic brick and timber construction
- High-profile signage opportunity
- Connected to Denver via light rail

Within 0.5 mile

154,706
pedestrians
per day*

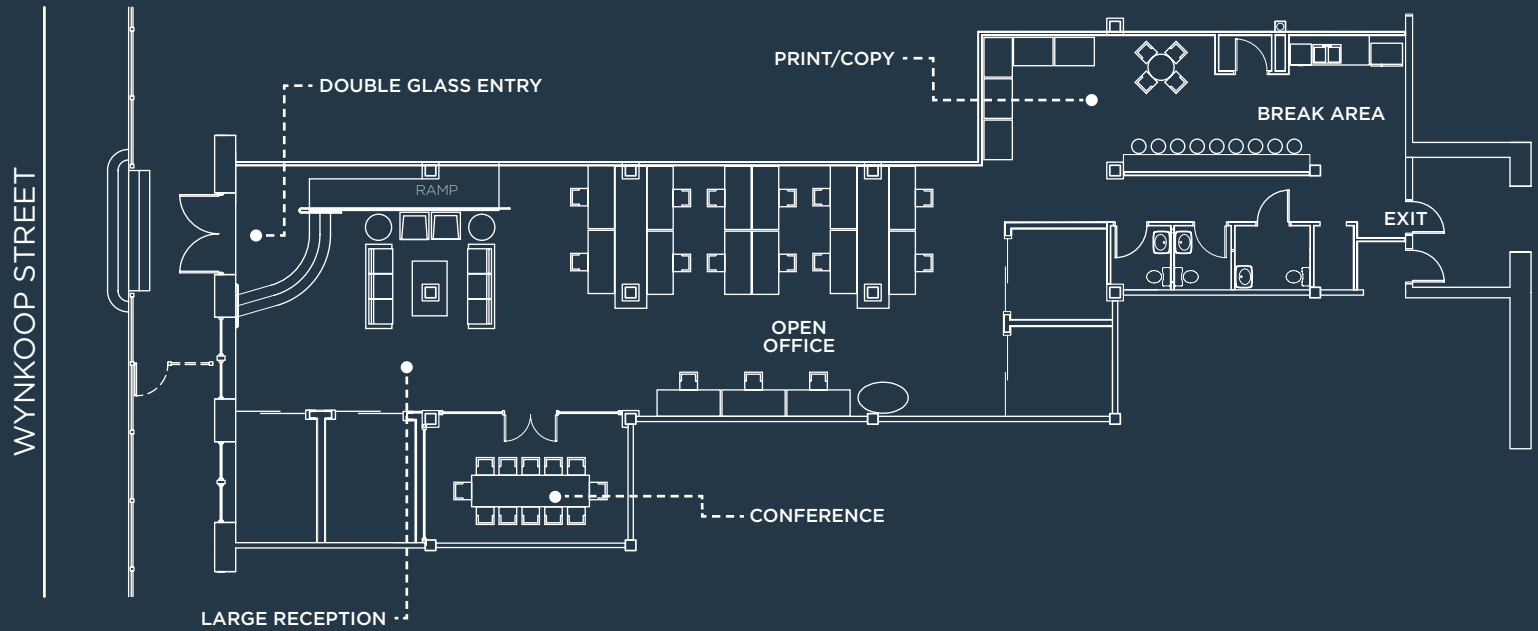
45,000
est. daytime
population*

\$90k
est. household
income*

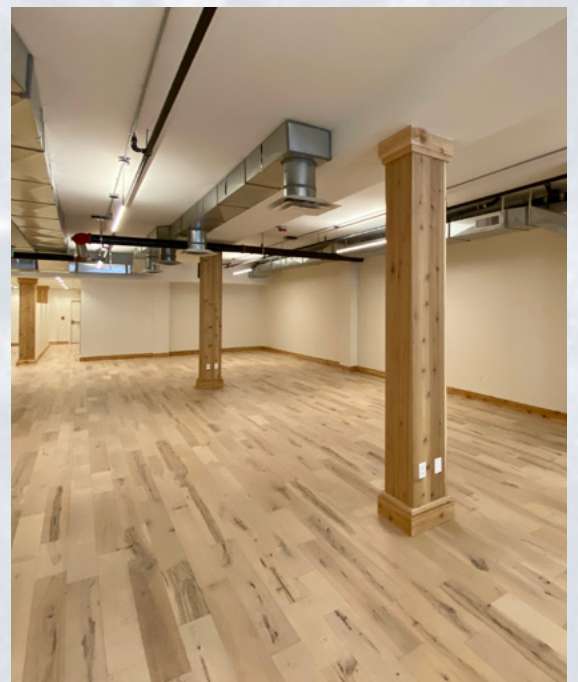
635k sf
class A office
under construction*

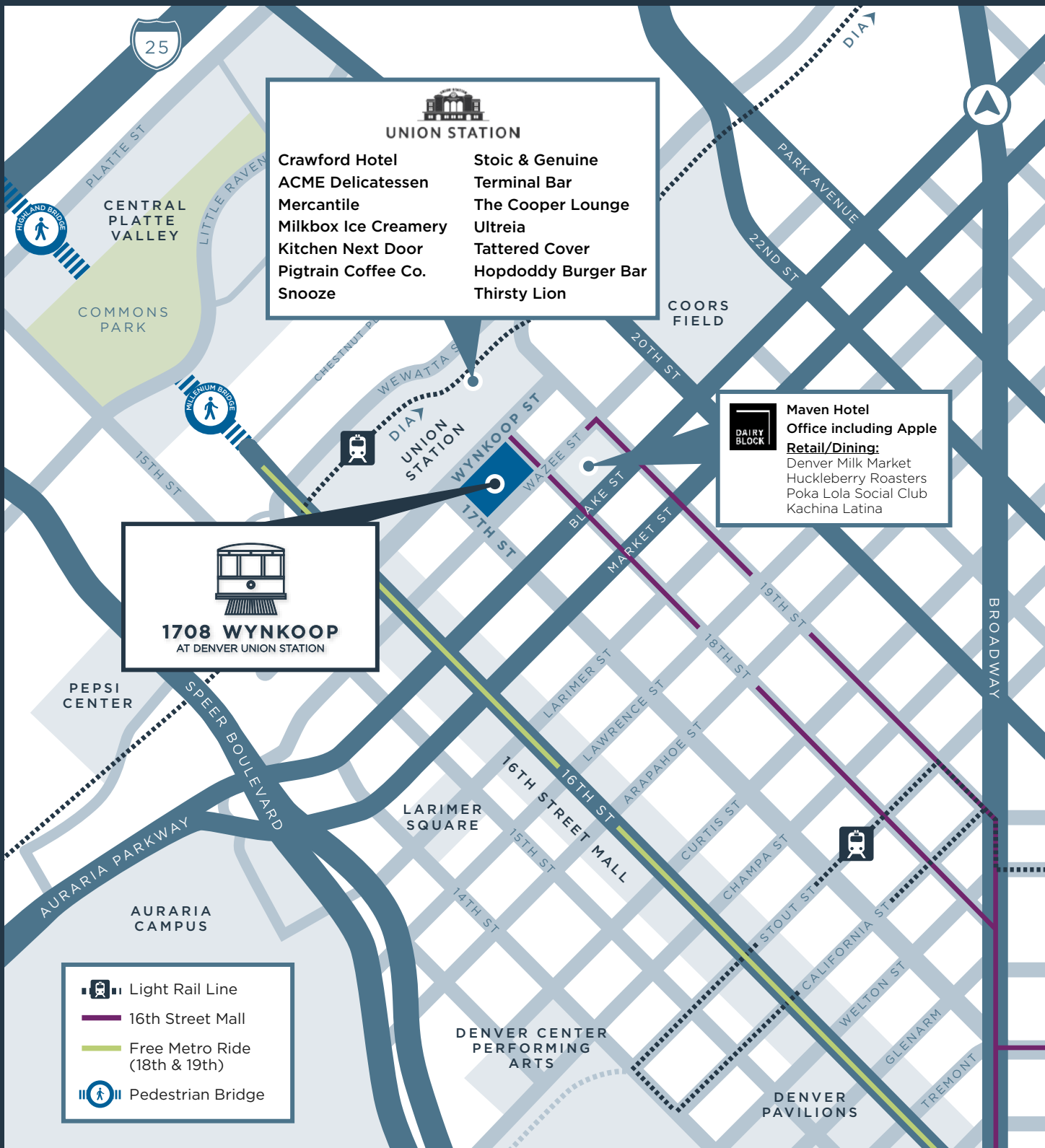
*based on 2018 statistics





3,258 SF CREATIVE OFFICE SPACE





For further leasing information, please contact:



James Roupp
+1 303 217 7947
james.roupp@jll.com

Bo Pitto
+1 303 260 6529
bo.pitto@jll.com

Jones Lang LaSalle Brokerage, Inc.

©2024 Jones Lang LaSalle IP, Inc. All rights reserved. All information contained herein is from sources deemed reliable; however, no representation or warranty is made to the accuracy thereof.