



For Sublease

8415 South Park Circle | Building E

Full building up to 98,384 SF Available

SOUTH PARK CENTER BUILDING E

Full building availability
Up to 98,395 SF in turn key conditon



*Total building size
98,395 SF*



Availability 24-hours a day



*Class A building,
move in condition*



Tenant controlled HVAC



*First floor divisible
(9,044 SF - 46,345 SF)*



*On-site fitness center with
locker room & showers*



*Monument Signage
Rights*



Outdoor Gathering Area



*Furniture can be made
available*



Food truck stop twice a week



*Well suited for call center,
HQ office, etc.*



Bus stop



Direct access to highway



*Parking ratio 7.1/1000 (includ-
ing up to 5 reserved spaces)*



Rental rate is negotiable

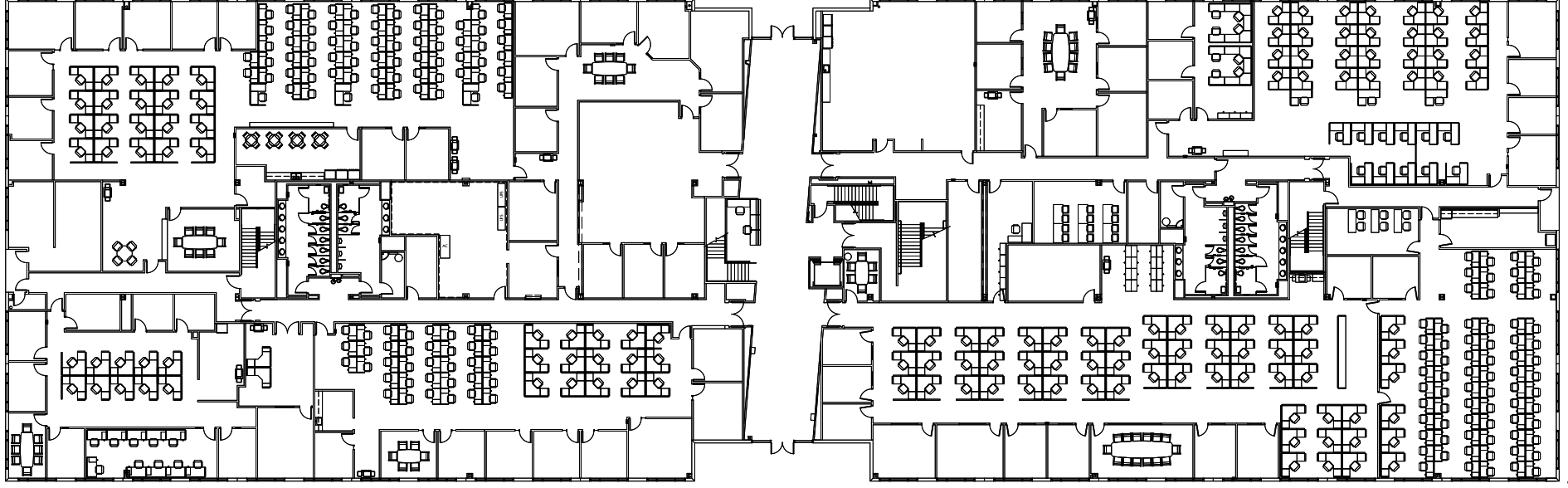


*Sublease term: January 31, 2027
(Shorter term options are available)*

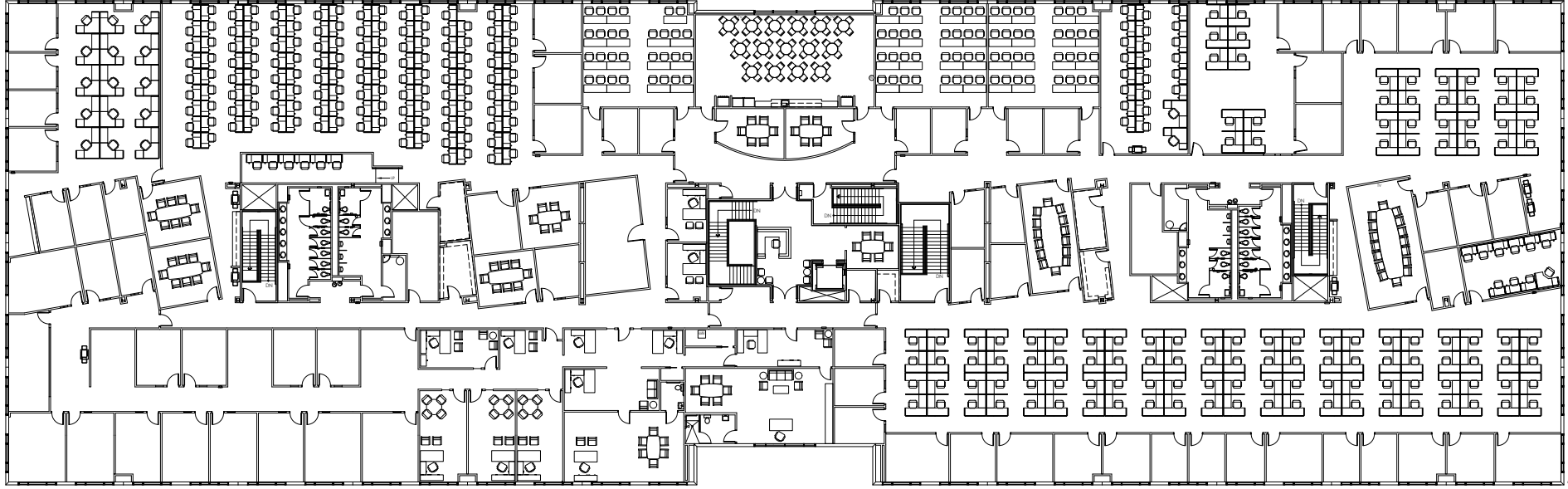


FLOOR PLANS

First Floor 46,345 SF

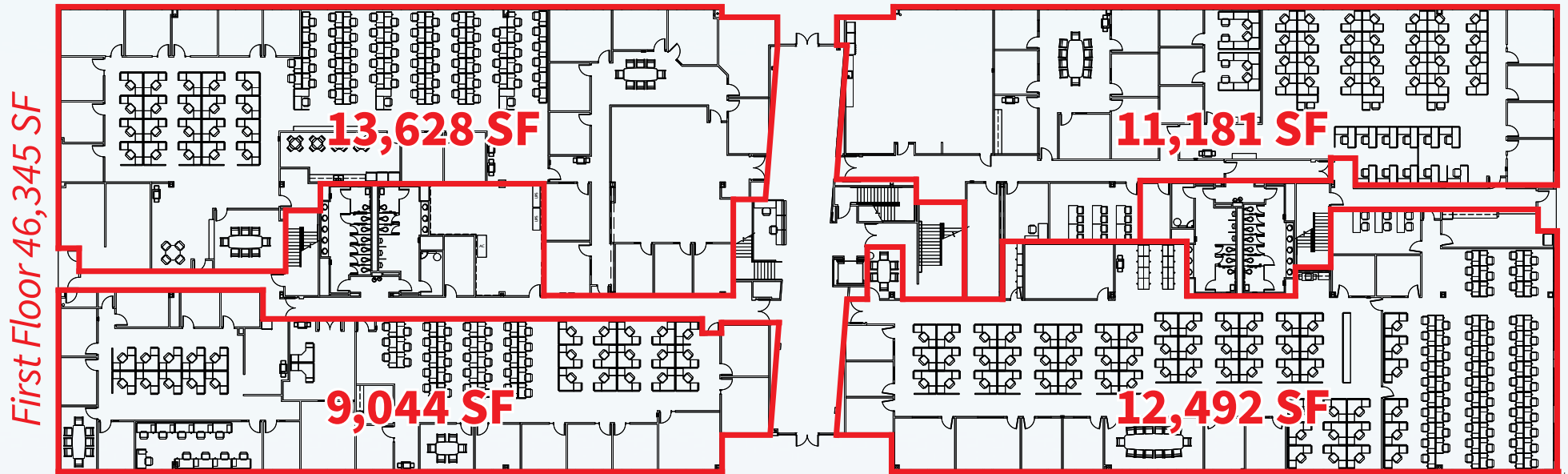


Second Floor 52,039 SF



FLEXIBLE DIVISION OPTIONS

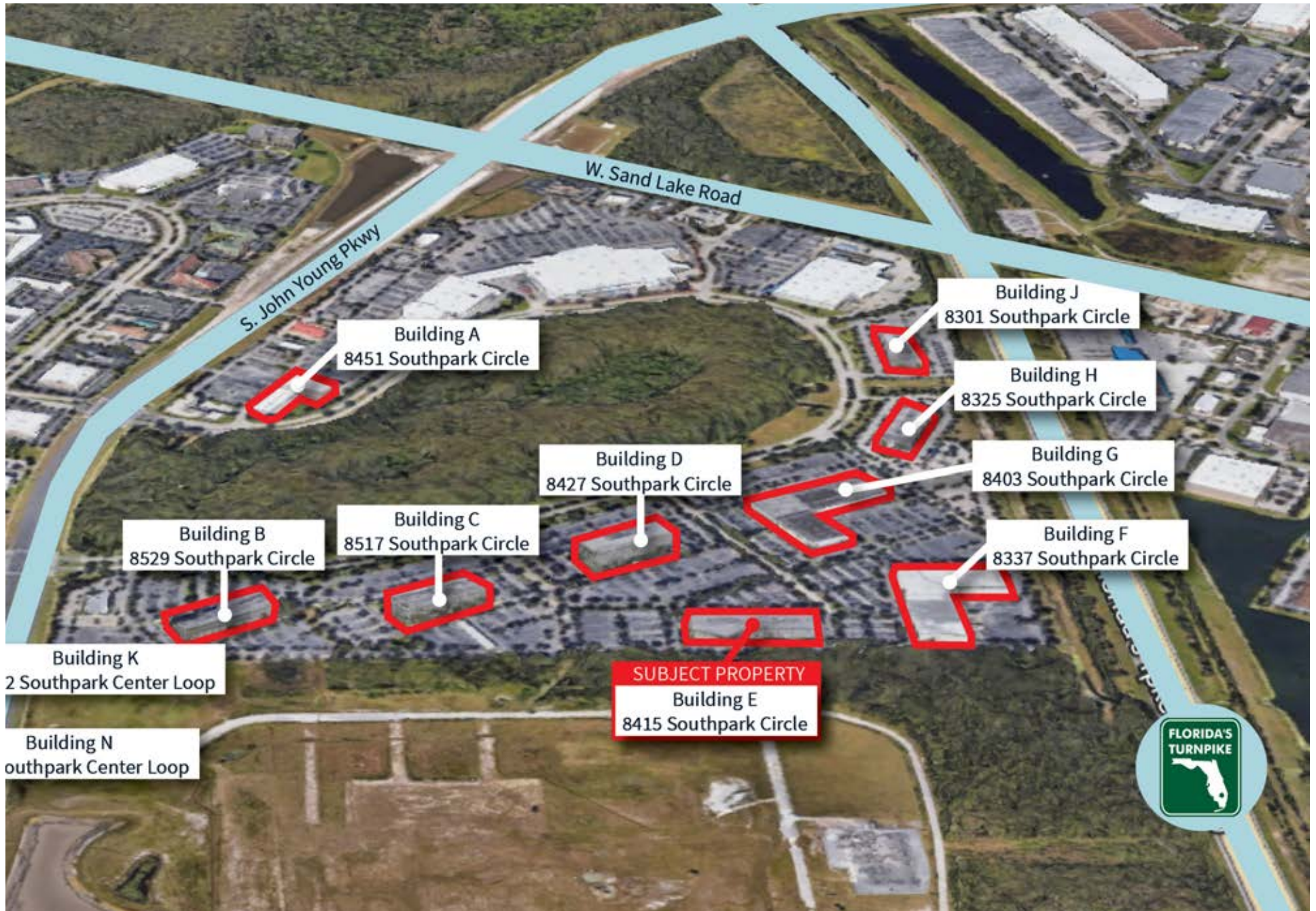
First Floor could be divided into smaller spaces of 9,044 - 13,628 SF



AREA MAP



SOUTH PARK CENTER EAST





South Park Center, Building E
8415 South Park Cir, Orlando FL



jll.com/orlando

Contact Information:

Nick Poole, MSRE

+1 407 982 8597

nick.poole@jll.com

Cody Manzella

+1 407 982 8542

cody.manzella@jll.com