

# For sale

±3,895 SF | Former Bank w/Existing Drive Thru Lane | 2998 N Alma School Rd, Chandler, AZ

Bids Due: 8/22/2024



## Property Details:

- Reuse, repositioning or redevelopment opportunity
- Property being sold via a modified sealed bid process
- Property being sold “as-is” without any warranties, express or implied, as to the condition of such property.



**55K+ VPD**

at Intersection\*



**\$110K + Avg. HHI**

within 3 miles\*



**399K+ People**

within 5 miles\*

## Listing agents:

**Regan G. Amato**

Executive Vice President

T +1 602 282 6322

**Ryan Tanner**

Senior Associate

T +1 602 282 6318

**For Sale | 2998 N Alma School Rd, Chandler, AZ**

Building SF	±3,895 SF
Land SF	±0.880 acres   ±38,339 SF
Address	2998 N Alma School Rd, Chandler, AZ 85224
Parcel Number(s)	15578-0442
Zoning	C-2
Current Use	Former Bank Branch
Parking	26 spaces (24 standard & 2 handicapped)

**Additional Info**

- Property is being sold “as-is where is” without any representations of warranties as to the condition of the building.
- Property being sold via a modified sealed bid process.
- Reuse, repositioning, or redevelopment opportunity.

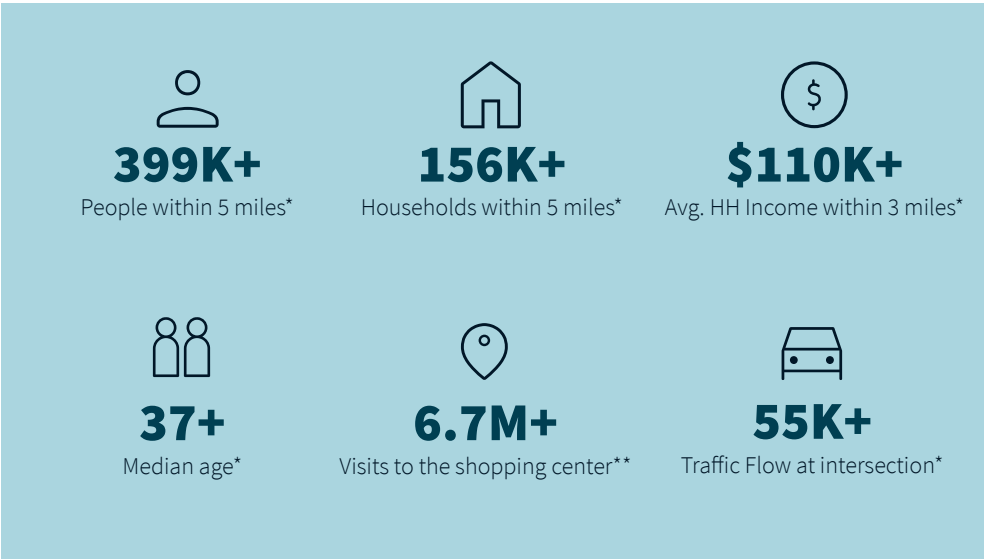
\*Additional property and purchase details including Title, Survey, and Environmental Disclosures can be found and accessed directly at [www.bankingcentersforsale.com](http://www.bankingcentersforsale.com).

To submit an offer... email the signed PSA (found in the Virtual Deal Room) to the listing broker.



2023 Demos*	1 Mile	3 Mile	5 Mile
Total population	18,356	130,872	399,169
Total households	7,294	52,425	156,079
Median age	37.4	37.2	35
Avg. household income	\$98,933	\$110,268	\$106,589

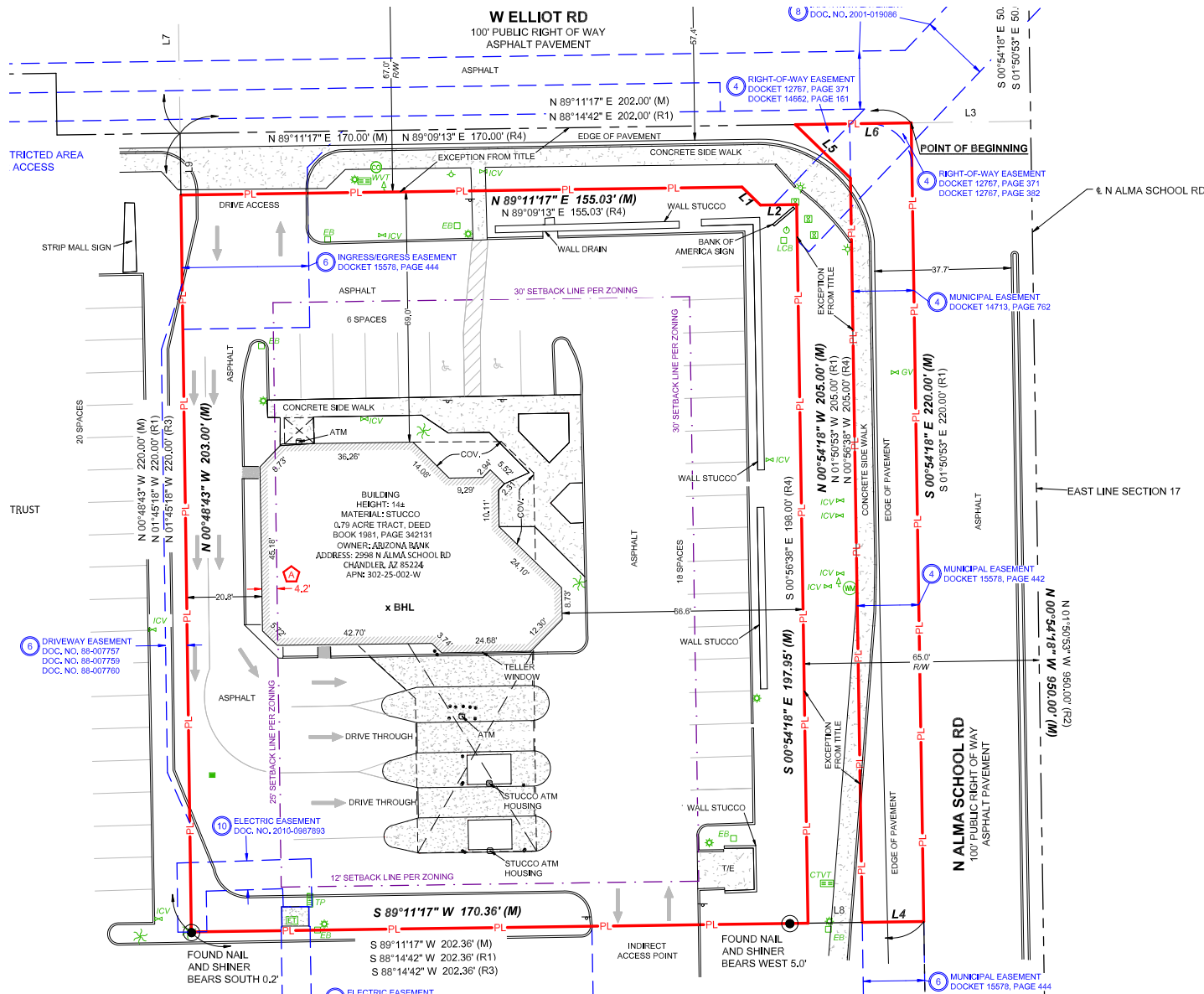
2028 Estimated Demos*	1 Mile	3 Mile	5 Mile
Total population	18,140	130,233	402,323
Total households	7,282	52,738	159,145
Median age	38.3	38	36.1
Avg. household income	\$113,532	\$127,972	\$122,907



\*Demo Source: Esri \*\*Demo Source: Placer.ai, the last 12 months

# Parcel overview

Complete ALTA Survey is available on [www.bankingcentersforsale.com](http://www.bankingcentersforsale.com)





Wide view aerial





Retail cooridor aerial







**SCAN TO VIEW  
LISTING**

**For more information:**

Additional property and purchase details including Title, Survey, and Environmental Disclosures can be found and accessed directly at [www.bankingcentersforsale.com](http://www.bankingcentersforsale.com). To submit an offer... email the signed PSA (found in the Virtual Deal Room) to the listing broker.

**Listing brokers:**

**Regan Amato**

*Executive Vice President*

T +1 602 282 6322

M +1 602 377 5110

Regan.Amato@jll.com

**Ryan Tanner**

*Senior Associate*

T +1 602 282 6318

M +1 520 609 2002

Ryan.Tanner@jll.com