



SUBLEASE AVAILABLE IMMEDIATELY

501 MCCORMICK DRIVE, GLEN BURNIE, MD | SUITES A-C



7,560 SF + 2,235 SF OFFICE

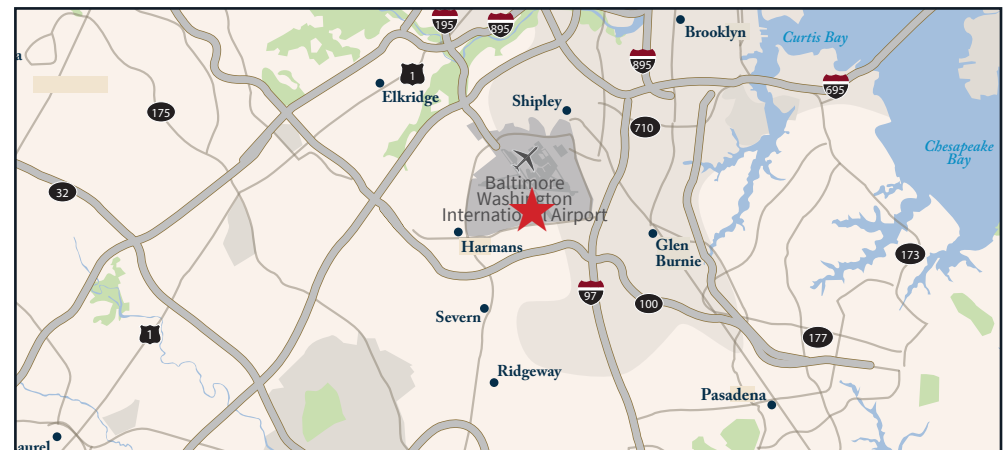
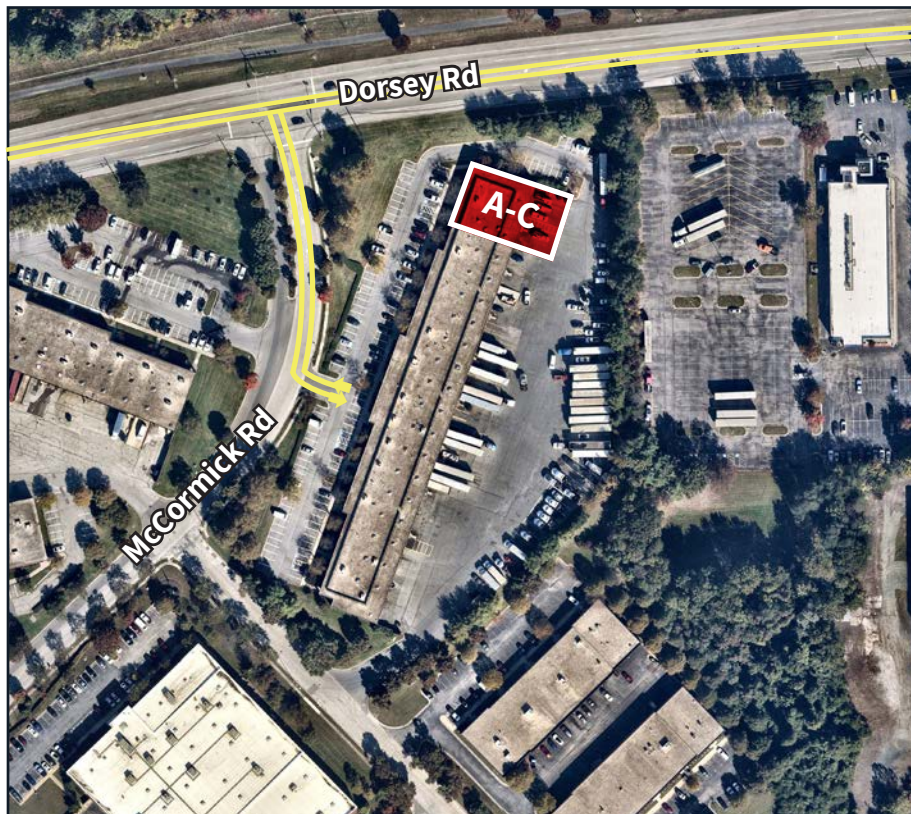
TRUCK COURT CAN ACCOMMODATE 53' TRACTOR TRAILERS • AMPLE 4/1,000 PARKING RATIO

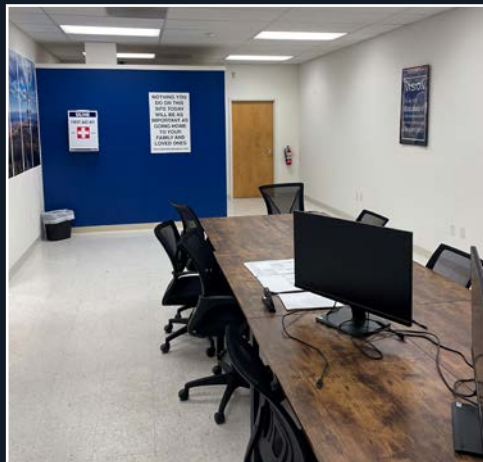
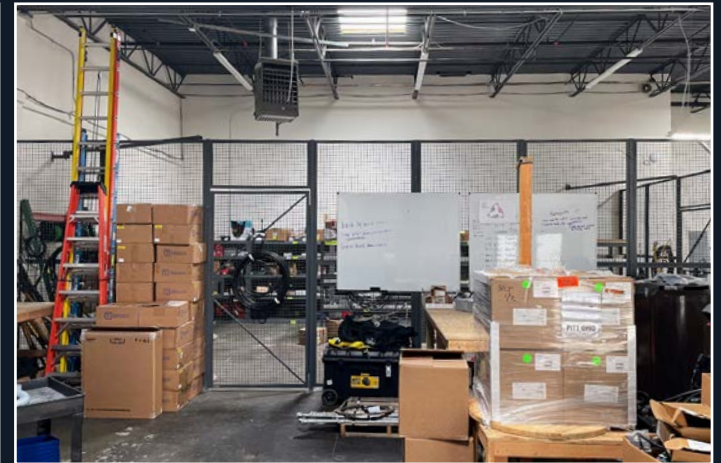
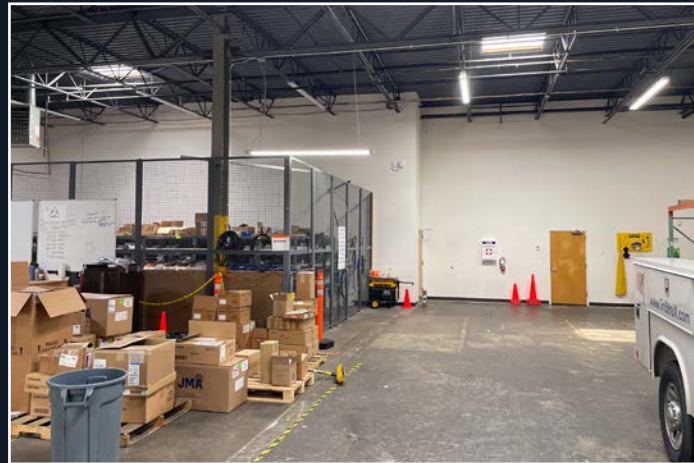
Ryan Burrows

443 452 1514

ryan.burrows@jll.com

- 7,560 SF
- 2,235 SF OFFICE
- END CAP
- 2 DOCKS (1 – 8'X10', 1 – 9'X10')
- 2 DRIVE-INS (1 – 10'X12', 1 – 10'X14')
- 16' CLEAR
- LED WAREHOUSE LIGHTING
- AMPLE 4/1,000 PARKING RATIO
- TRUCK COURT CAN ACCOMMODATE 53' TRACTOR TRAILERS
- AVAILABLE IMMEDIATELY







Although information has been obtained from sources deemed reliable, neither Owner nor JLL makes any guarantees, warranties or representations, express or implied, as to the completeness or accuracy as to the information contained herein. Any projections, opinions, assumptions or estimates used are for example only. There may be differences between projected and actual results, and those differences may be material. The Property may be withdrawn without notice. Neither Owner nor JLL accepts any liability for any loss or damage suffered by any party resulting from reliance on this information. If the recipient of this information has signed a confidentiality agreement regarding this matter, this information is subject to the terms of that agreement. ©2021. Jones Lang LaSalle IP, Inc. All rights reserved.

For leasing information, please contact:

Ryan Burrows

443 452 1514

ryan.burrows@jll.com