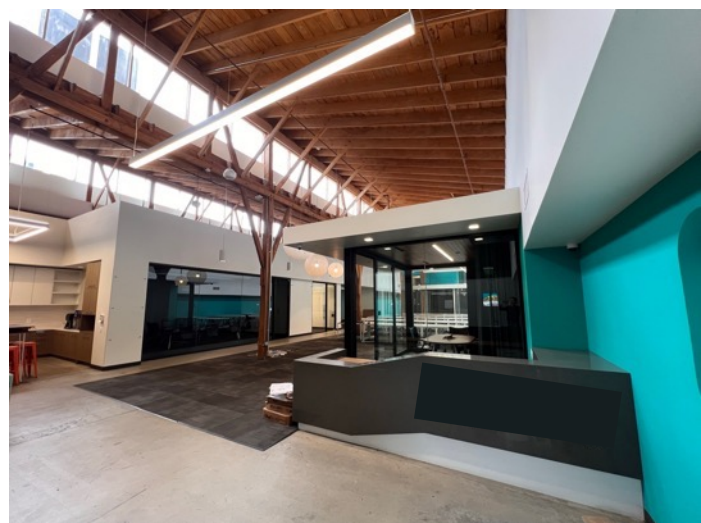
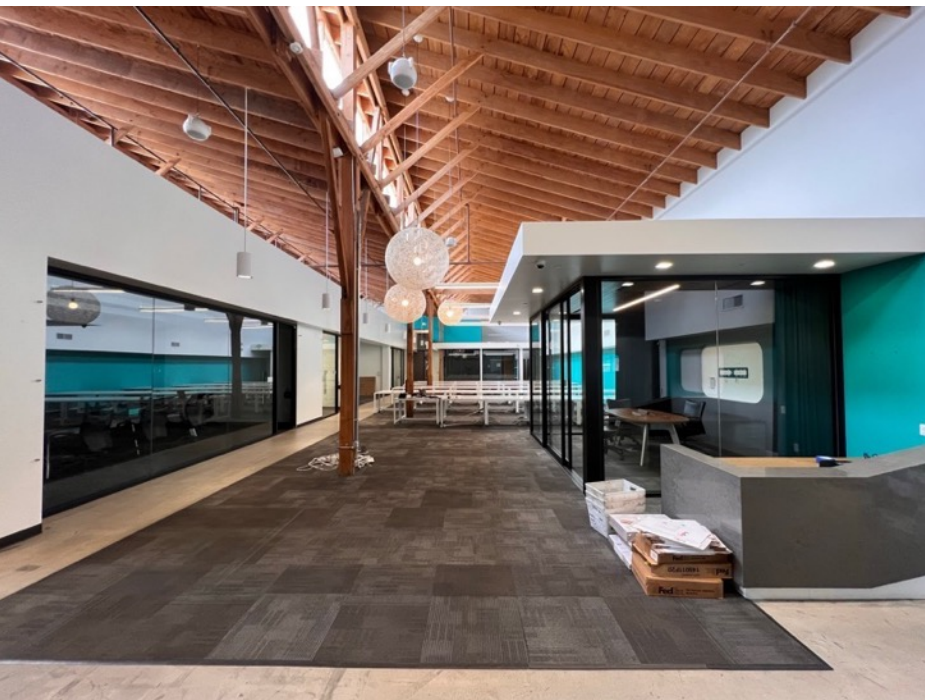


3526 HAYDEN
AVENUE

@ CONJUNCTIVE POINTS
CULVER CITY + LA



Jones Lang LaSalle Brokerage, Inc.,
Real estate license #01856260

Micheal Geller
Managing Director
micheal.geller@jll.com
License #00800010
(310) 486-1976

Gabriel Brown
Executive Vice President
gabe.brown@jll.com
License #01441920
(310) 435-4344

3526 HAYDEN
AVENUE

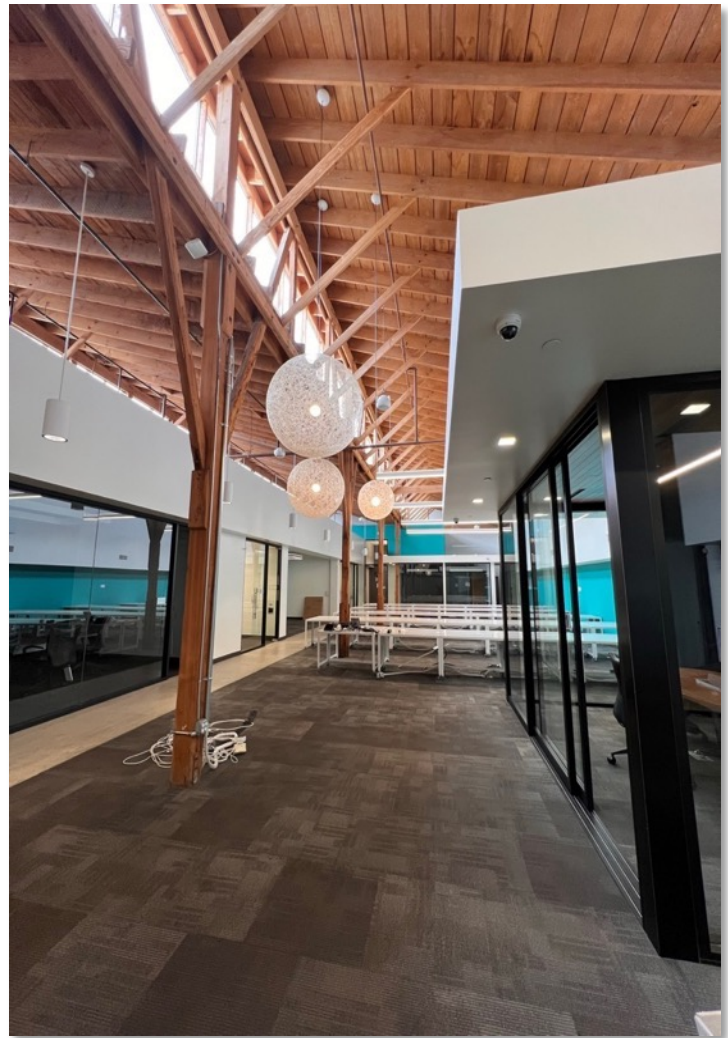
@ CONJUNCTIVE POINTS
CULVER CITY + LA

Beautiful move-in ready creative office space in an award-winning architectural building. Attributes include high sawtooth ceilings with large windows and bright natural light, outdoor patio area, glass offices, open kitchen area and reception, entry directly from reserved parking. Located at the prime intersection of Hayden and National next to the recognizable Art Tower, in the renowned Conjective Points creative office community, developed by Samitaur Constructs (Frederick & Laurie Samitaur Smith) and designed by Eric Owen Moss Architects. Walking distance to numerous restaurant and retail amenities, as well as the Expo Light Rail station.

AVAILABLE SPACE: **6,095 RSF**
Available Now

RENTAL RATE: **Negotiable**

PARKING: **3 spaces per 1,000 RSF**
\$175 unreserved
\$275 reserved



IDEALLY LOCATED IN THE HEART OF CULVER CITY'S HAYDEN TRACT – THE VIBRANT CREATIVE OFFICE EPICENTER OF WEST LA



CONJUNCTIVE POINTS

Conjunctive Points is a community of creative tenants from such diverse fields as entertainment, technology, advertising and design. The common theme: the desire to grow and develop in a visually striking environment unlike anything else in the world.

