

Umbrella

3542 HAYDEN AVE

@ CONJUNCTIVE POINTS
CULVER CITY + LA



Jones Lang LaSalle Brokerage, Inc.,
Real estate license #01856260

Micheal S. Geller
Managing Director
micheal.geller@jll.com
License #00800010
(310) 486-1976

Gabriel J. Brown
Executive Vice President
gabe.brown@jll.com
License #01441920
(310) 435-4344

Umbrella

3542 HAYDEN AVE

@ CONJUNCTIVE POINTS
CULVER CITY + LA

Extraordinary creative office building with award-winning architectural exterior design, situated within an open campus-like setting. Features include an existing screening room, high-volume bow-truss ceilings with exposed wood, concrete floors, glass offices, versatile open lounge workspace, substantial outdoor lawn area and adjacent parking. Located in the center of the renowned Conjective Points creative office community, developed by Samitaur Constructs (Frederick & Laurie Samitaur Smith) and designed by Eric Owen Moss Architects.

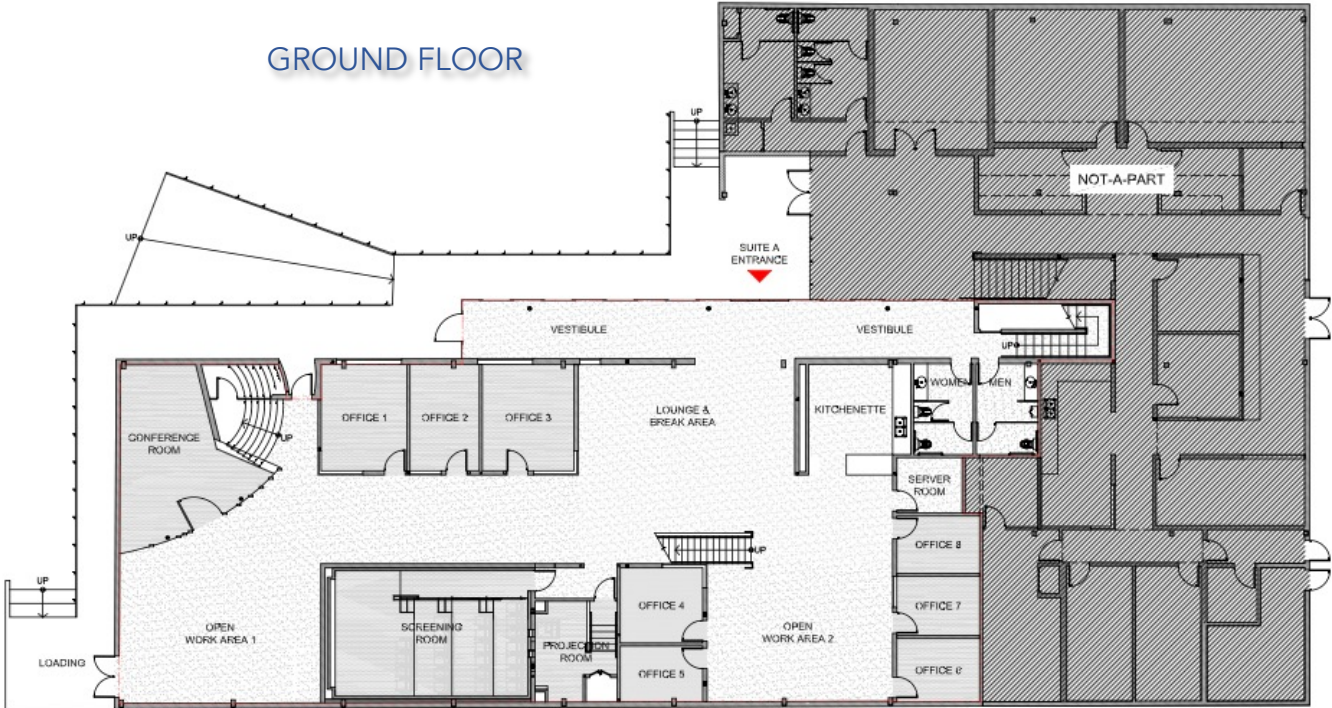
AVAILABLE SPACE: **9,824 RSF – Suite A**

RENTAL RATE: **Negotiable**

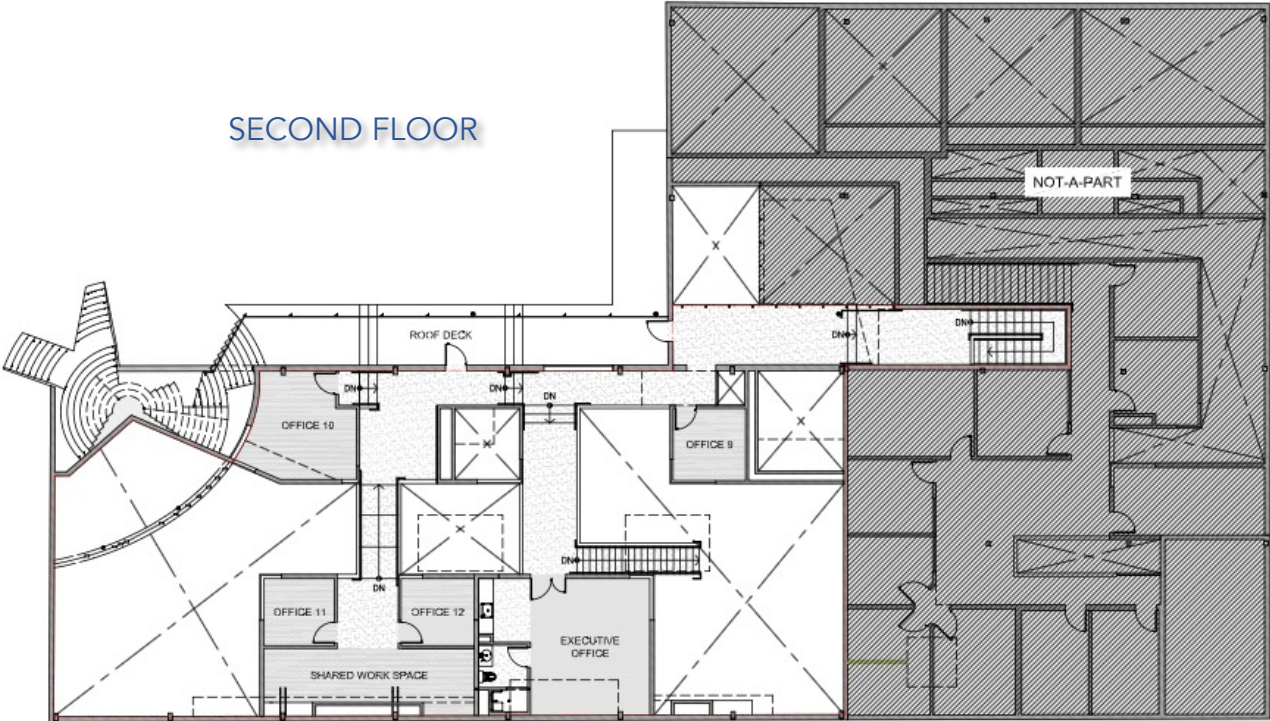
PARKING: **3 spaces per 1,000 RSF**
\$175 unreserved
\$275 reserved



GROUND FLOOR



SECOND FLOOR



Umbrella

3542 HAYDEN AVE

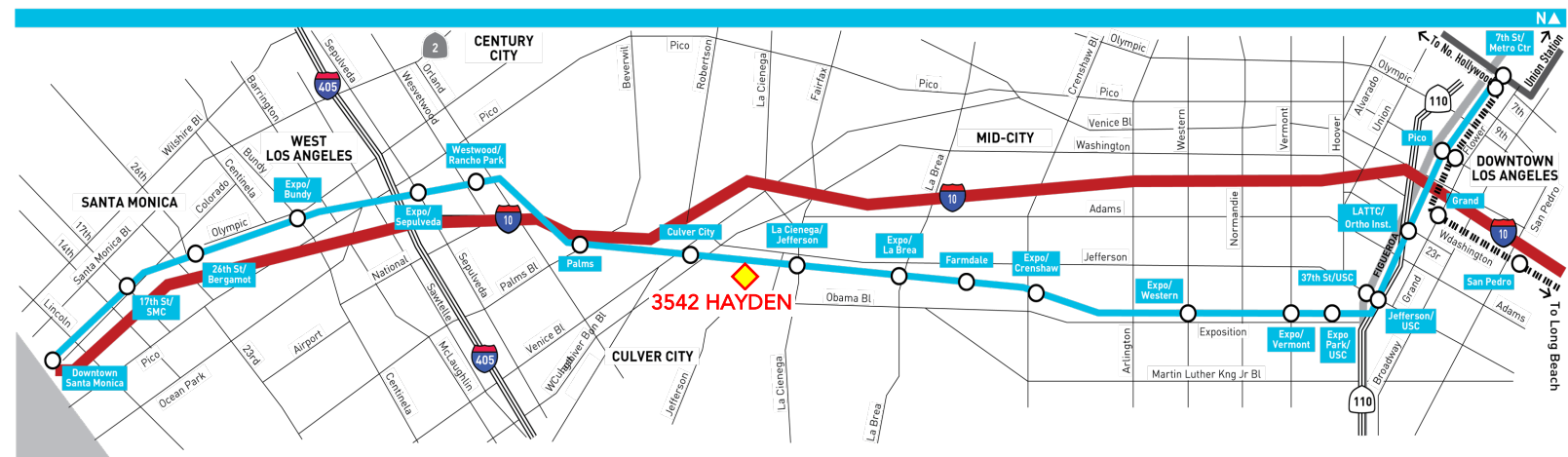
@ CONJUNCTIVE POINTS
CULVER CITY + LA

IDEALLY LOCATED IN THE HEART OF CULVER CITY'S HAYDEN TRACT – THE VIBRANT CREATIVE OFFICE EPICENTER OF WEST LA



CONJUNCTIVE POINTS

Conjunctive Points is a community of creative tenants from such diverse fields as entertainment, technology, advertising and design. The common theme: the desire to grow and develop in a visually striking environment unlike anything else in the world.



Although information has been obtained from sources deemed reliable, neither Owner nor JLL makes any guarantees, warranties or representations, express or implied, as to the completeness or accuracy as to the information contained herein. Any projections, opinions, assumptions or estimates used are for example only. There may be differences between projected and actual results, and those differences may be material. The Property may be withdrawn without notice. Neither Owner nor JLL accepts any liability for any loss or damage suffered by any party resulting from reliance on this information. If the recipient of this information has signed a confidentiality agreement regarding this matter, this information is subject to the terms of that agreement. ©2022. Jones Lang LaSalle IP, Inc. All rights reserved.