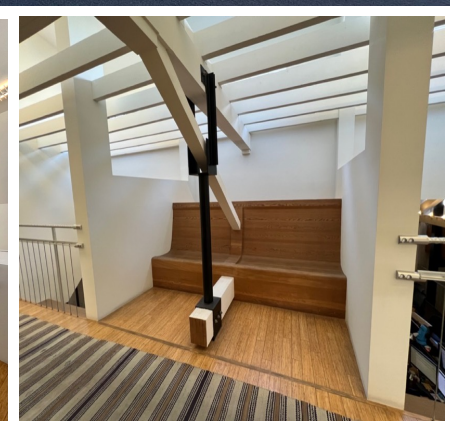


Paramount Laundry

3960 INCE BLVD

@ CONJUNCTIVE POINTS
CULVER CITY + LA



Jones Lang LaSalle Brokerage, Inc.,
Real estate license #01856260

Micheal S. Geller
Managing Director
micheal.geller@jll.com
License #00800010
(310) 486-1976

Gabriel J. Brown
Executive Vice President
gabe.brown@jll.com
License #01441920
(310) 435-4344

Paramount Laundry

3960 INCE BLVD

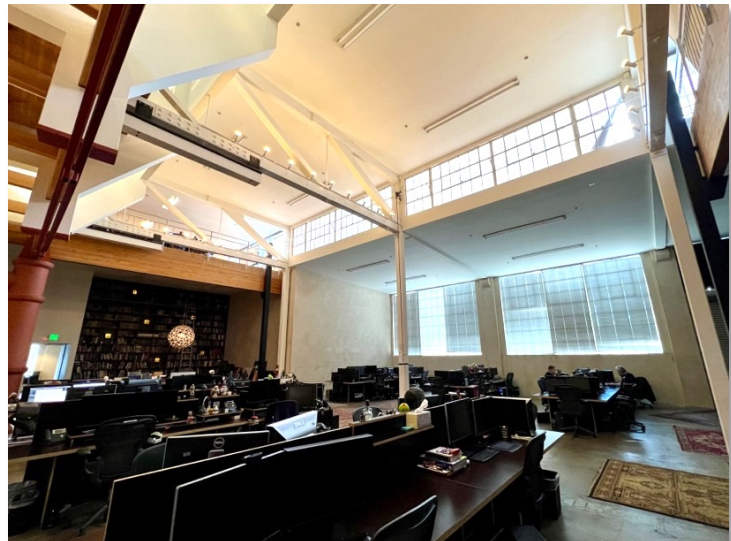
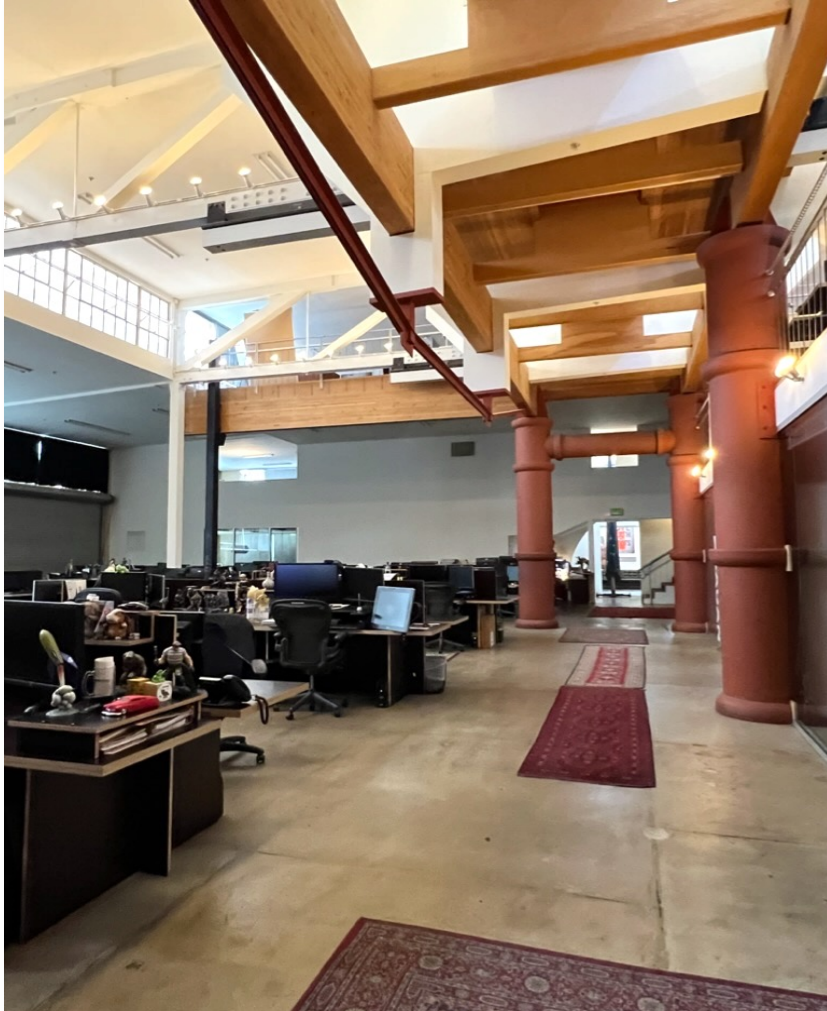
@ **CONJUNCTIVE POINTS**
CULVER CITY + LA

Exceptional standalone creative office building adjacent to downtown Culver City. Exciting and prominent architectural property situated across from Amazon Studios and Sony Pictures Animation. Features include high ceilings, concrete floors, substantial open workspace with connective mezzanine areas, outdoor patio area and dedicated onsite parking lot. Short walking distance to multiple restaurants and retail amenities. Located in the renowned Conjunctive Points creative office community, developed by Samitaur Constructs (Frederick & Laurie Samitaur Smith) and designed by Eric Owen Moss Architects.

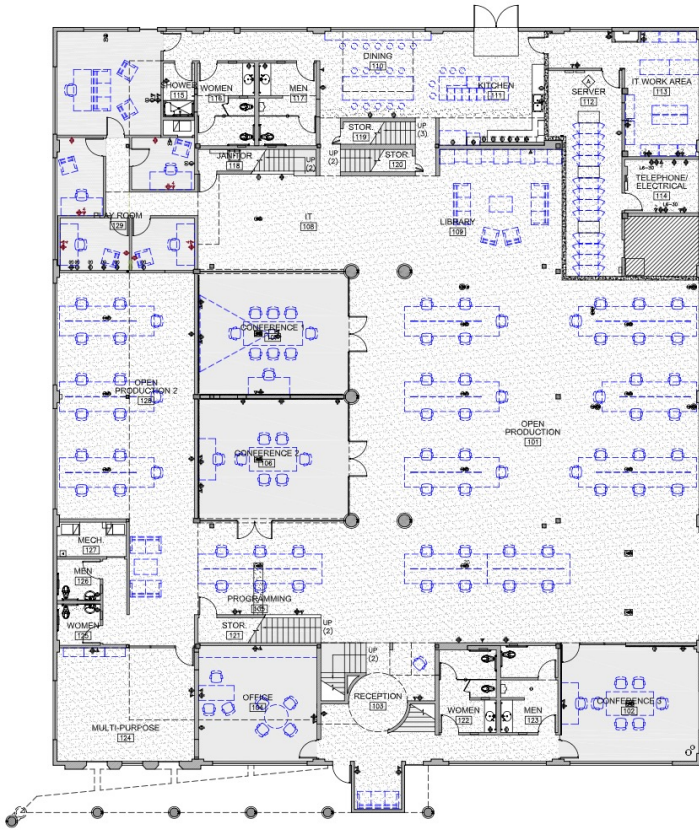
AVAILABLE SPACE: **24,825 RSF**

RENTAL RATE: **Negotiable**

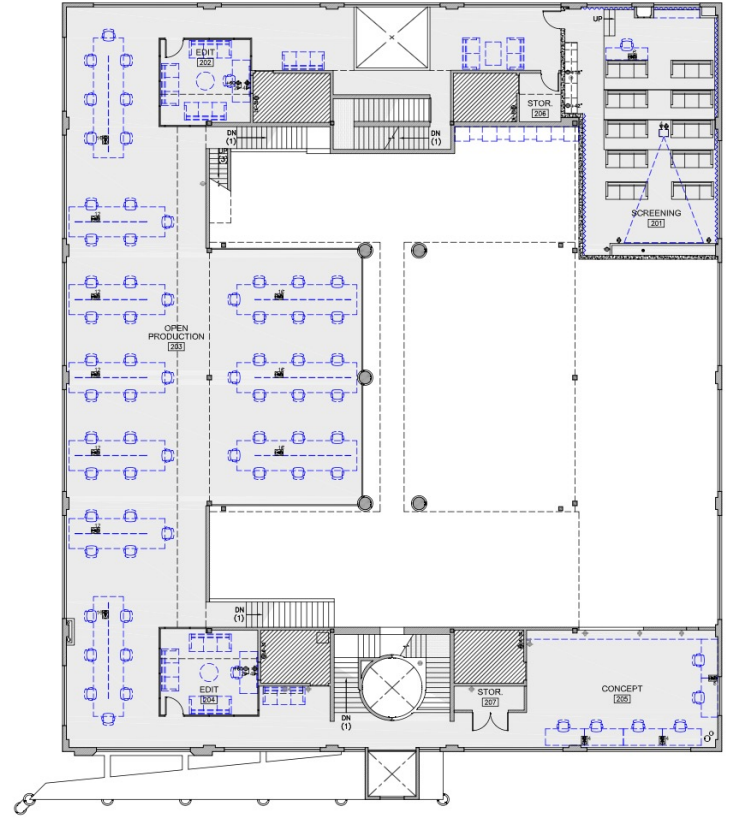
PARKING: **2/1,000 onsite**
\$175 per space unreserved



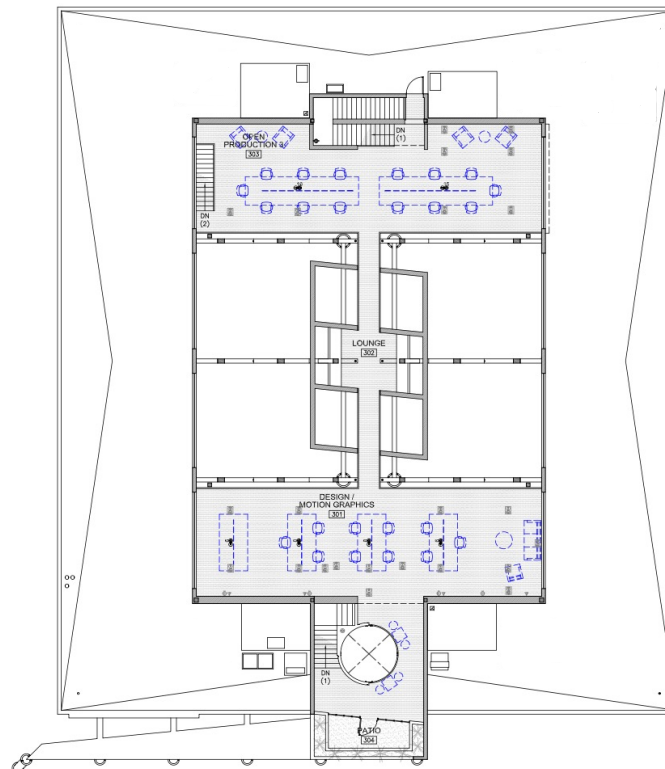
GROUND FLOOR



SECOND LEVEL



THIRD LEVEL





METRO E LINE (EXPO) – Paramount Laundry (3960 Ince Blvd) is walking distance to the Culver City Station.

