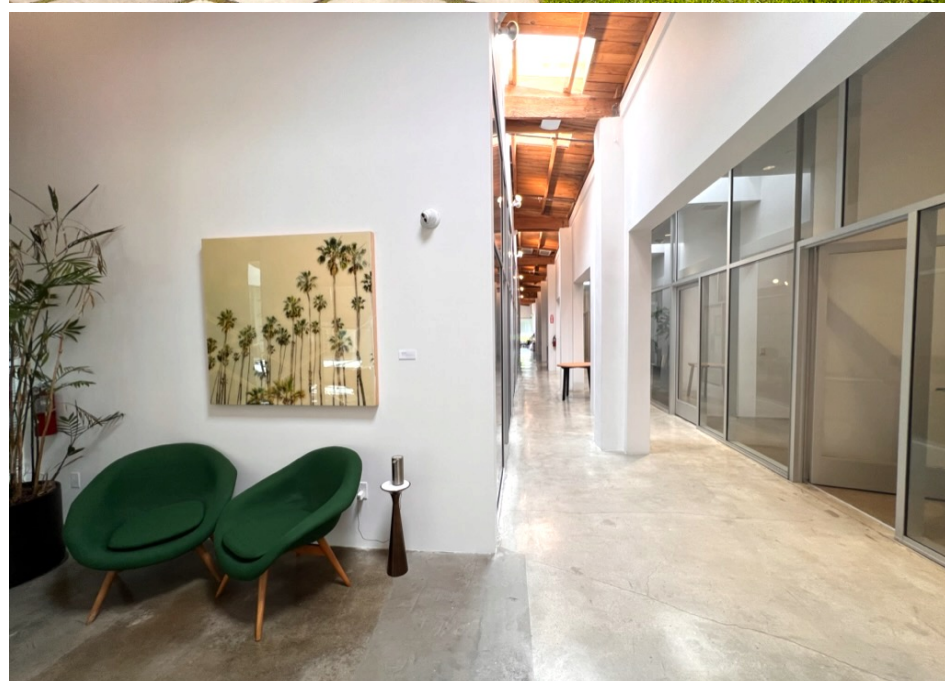


8522 NATIONAL
BOULEVARD

@ CONJUNCTIVE POINTS
CULVER CITY + LA



Jones Lang LaSalle Brokerage, Inc.,
Real estate license #01856260

Micheal Geller
Managing Director
micheal.geller@jll.com
License #00800010
(310) 486-1976

Gabriel Brown
Executive Vice President
gabe.brown@jll.com
License #01441920
(310) 435-4344

8522 NATIONAL BOULEVARD

@ CONJUNCTIVE POINTS
CULVER CITY + LA

Beautiful move-in ready creative office space in an award-winning architectural building. Attributes include high ceilings, concrete floors, multiple glass offices, skylights and outdoor patio area, newly designed entry directly from parking. Located on National Blvd near the intersection of Hayden Ave, in the renowned Conjective Points creative office community, developed by Samitaur Constructs (Frederick & Laurie Samitaur Smith) and designed by Eric Owen Moss Architects. Walking distance to Expo Light Rail station and numerous restaurant amenities.

AVAILABLE SPACE: Suite 102 – 5,009 RSF
Available November 1, 2023

RENTAL RATE: Negotiable

PARKING: 3 spaces per 1,000 RSF
\$175 unreserved
\$275 reserved



8522 NATIONAL BOULEVARD

@ CONJUNCTIVE POINTS
CULVER CITY + LA



IDEALLY LOCATED IN THE HEART OF CULVER CITY'S HAYDEN TRACT – THE VIBRANT CREATIVE OFFICE EPICENTER OF WEST LA



CONJUNCTIVE POINTS

Conjunctive Points is a community of creative tenants from such diverse fields as entertainment, technology, advertising and design. The common theme: the desire to grow and develop in a visually striking environment unlike anything else in the world.

