

# 34800 Campus Drive

Fremont, CA



## Full Building Sublease Opportunity

**±41,472 RSF Available Now**

Flexible term through May 31, 2032



Jones Lang LaSalle Brokerage, Inc. License #01856260

# Highlights



Full Building  
Opportunity –  
±41,472 SF



Available  
April 1, 2024  
through May 31, 2032



Furniture  
available



High-end  
tech finishes  
throughout



Bike  
storage



Open floorplan  
with ample  
natural light



Large Café /  
Breakroom  
with skylights



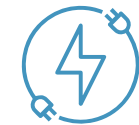
Dock/grade-level  
loading possible



On-Site  
Surface Parking Spots  
3.0/1000 Ratio



EV Charging  
Stations



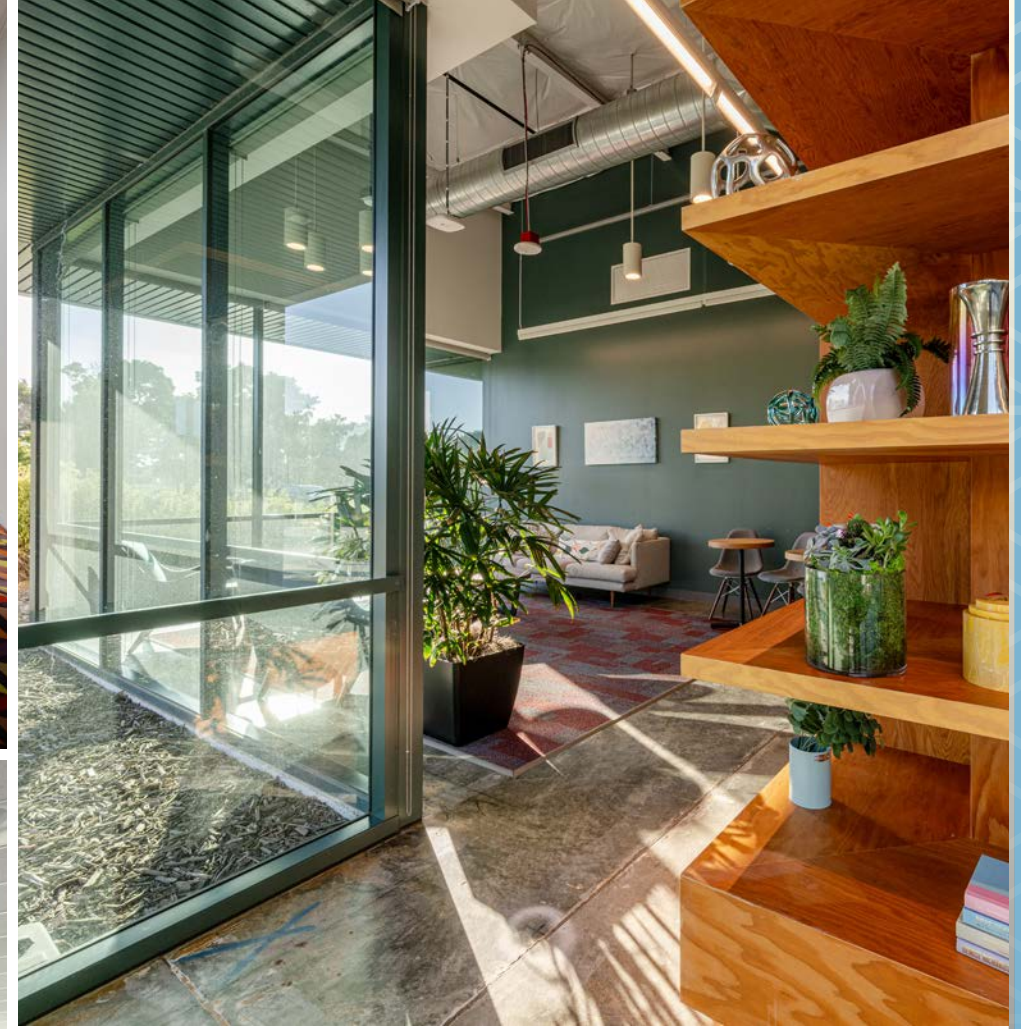
2,000 Amps @  
480V/3P



# Brand new, high-end interior finishes.



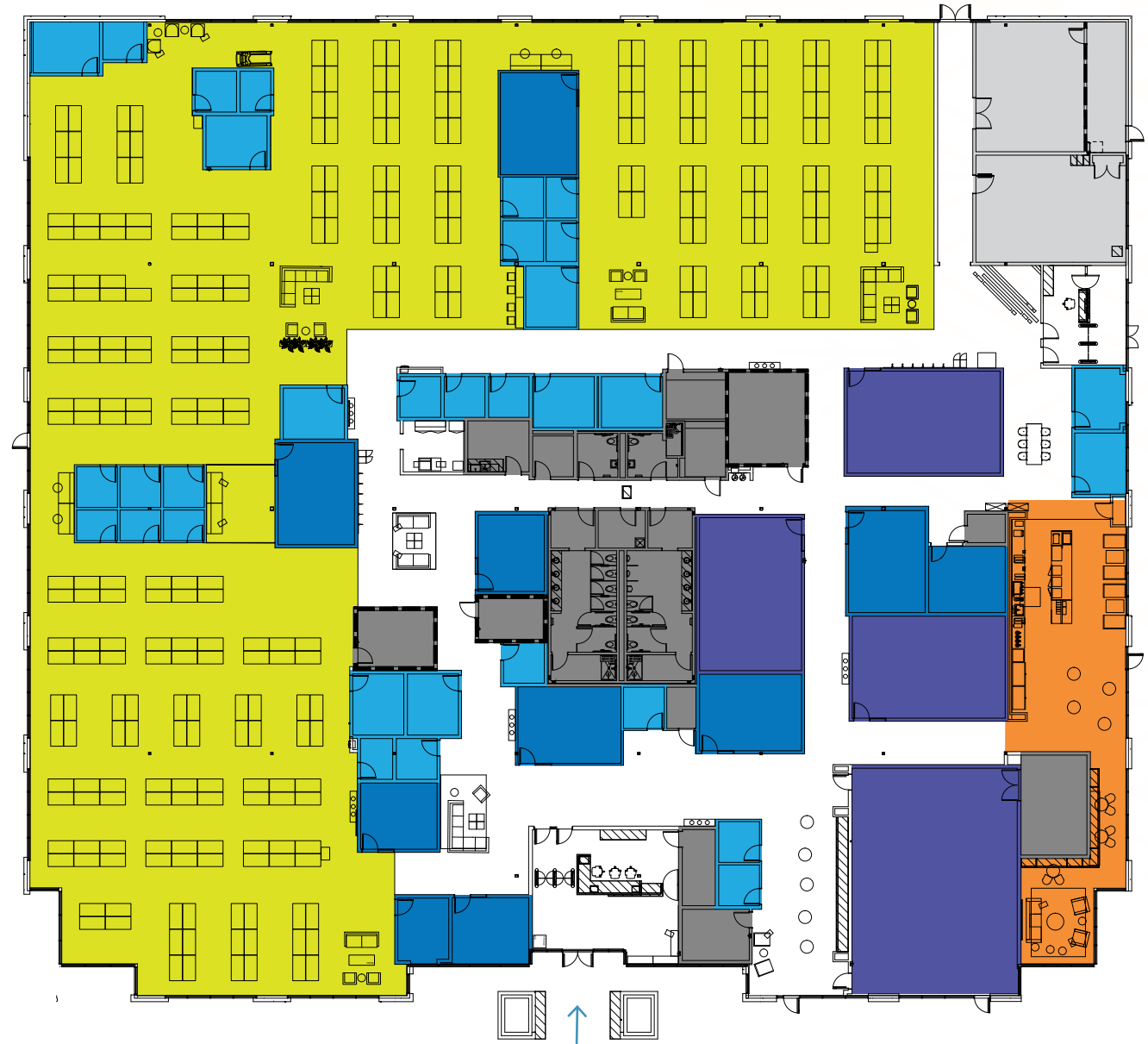




# Floorplan

± 41,472 RSF

- Open Work Area - 305 Desks
- Break Area
- Building Core/Maintenance
- Large Conference Rooms
- Medium Conference Rooms
- Small Conference Rooms
- Loading Area



Lobby Entrance

Campus Drive



Map of the Palo Alto / Menlo Park area showing 15 numbered locations. A blue star marks 34800 Campus Drive. A blue box shows a photo of the building. A blue arrow points to Hwy 84 with the text "To: Dumbarton Bridge & Menlo Park". A blue box at the bottom right says "DRIVE TIME to Palo Alto / Menlo Park: 20 mins."

1. **Jack in the Box**
2. **King of Thai Noodles House**
3. **Rice and Spoon Vietnamese Cuisine**
4. **Tasty Pot - Newark**
5. **Tramy's Restaurant**
6. **Pan Fried Dumplings**
7. **Coyote Hills Regional Park**
8. **Ardenwood Farmyard Cafe**

9. Aloft Silicon Valley
10. Chipotle Mexican Grill
11. Vitality Bowls Newark
12. Sprouts Farmers Market
13. Safeway
14. Starbucks
15. Courtyard by Marriott Newark SV

# 34800 Campus Drive

Fremont, CA



## **MARK BODIE**

*Senior Managing Director*

+1 650 480 2212

Mark.Bodie@jll.com

RE Lic#: 01941415

## **TODD HUSAK**

*Senior Managing Director*

+1 650 315 7865

Todd.Husak@jll.com

RE Lic#: 01785130

## **TOSS VALLENTINE**

*Senior Managing Director*

+1 650 480 2133

Toss.Vallentine@jll.com

RE Lic#: 01742629

## **CLARISSA RICHARDSON**

*Vice President*

+1 415 395 7299

Clarissa.Richardson@jll.com

RE Lic#: 02085310

For over 200 years, JLL (NYSE: JLL), a leading global commercial real estate and investment management company, has helped clients buy, build, occupy, manage and invest in a variety of commercial, industrial, hotel, residential and retail properties. A Fortune 500 company with annual revenue of \$20.9 billion and operations in over 80 countries around the world, our more than 103,000 employees bring the power of a global platform combined with local expertise. Driven by our purpose to shape the future of real estate for a better world, we help our clients, people and communities SEE A BRIGHTER WAYSM. JLL is the brand name, and a registered trademark, of Jones Lang LaSalle Incorporated. For further information, visit [jll.com](http://jll.com).

