

# 1,500-6,722 RSF Sublease available

1325 4th Ave, Seattle

## Space highlights

- Floor 16: 6,722 RSF
- Divisible to 1,500 RSF
- Sublease term through December 31, 2027
- Shorter or longer term available
- Plug and play with furniture

## Building highlights



Conference room



Bike storage



On-site retail



Parking ratio: 0.55/1,000



**Pat Pendergast**

+1 206 521 2663

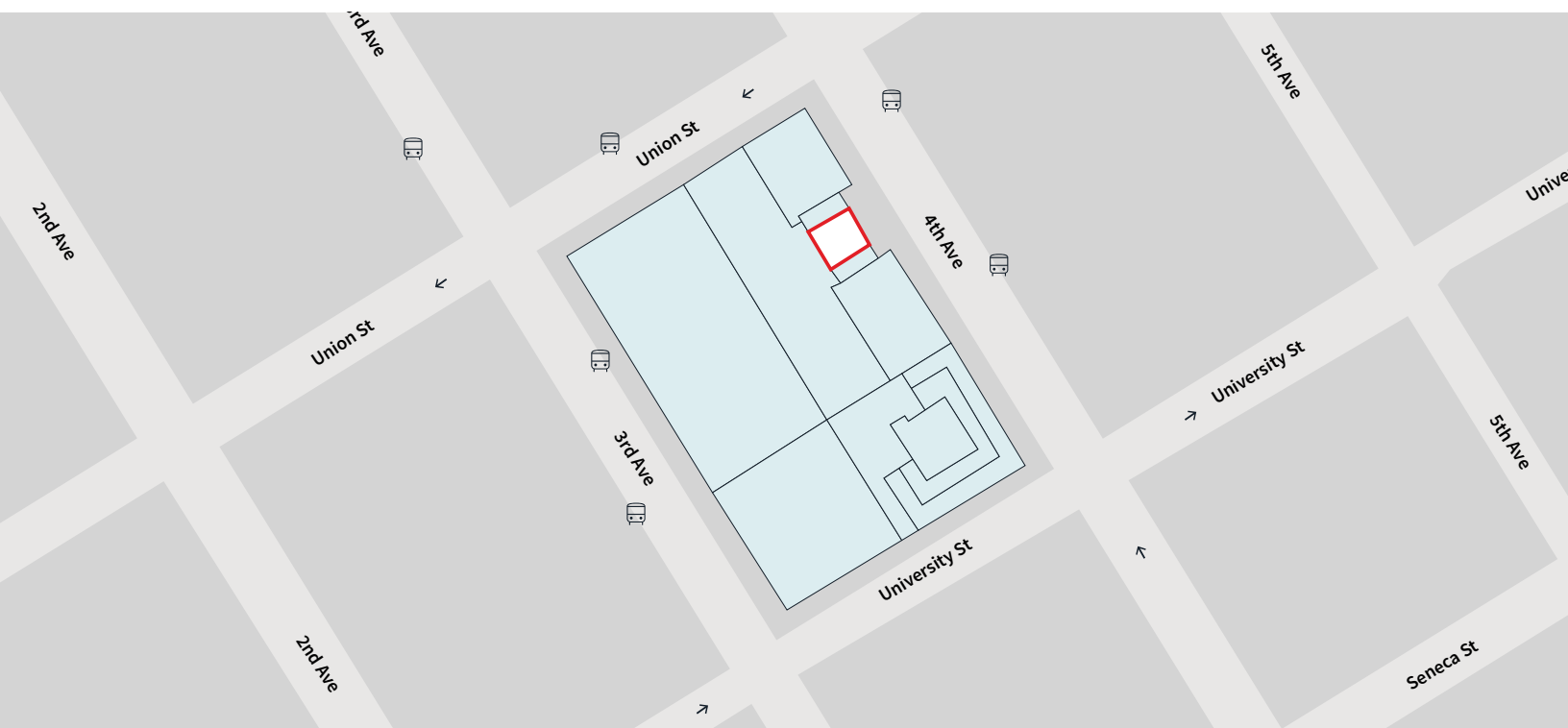
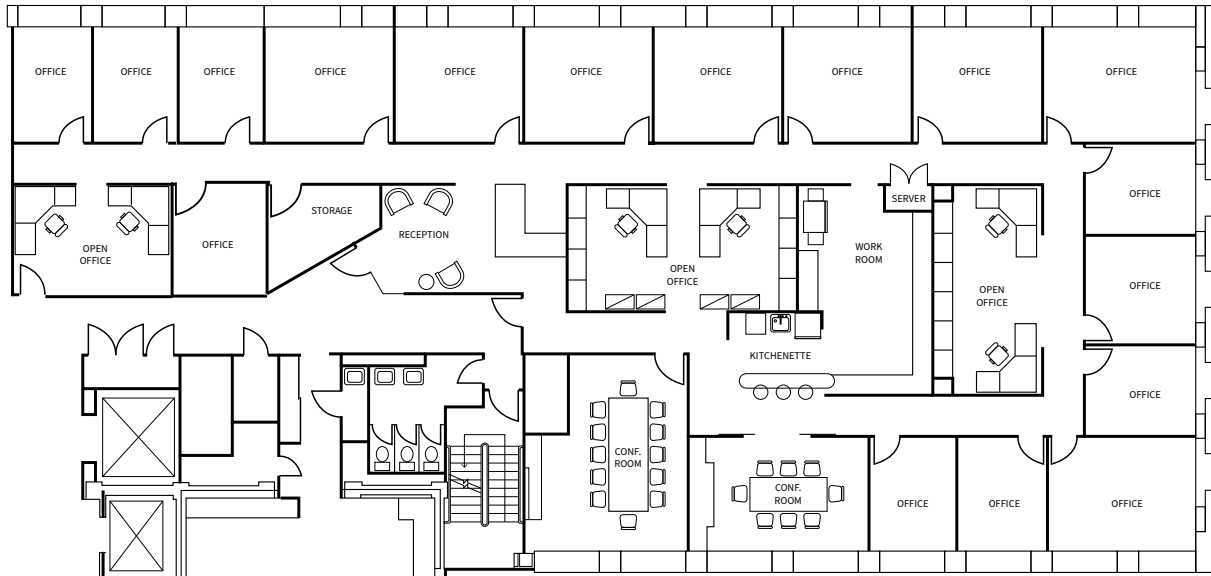
pat.pendergast@jll.com

**Adam Chapman**

+1 206 521 2672

adam.chapman@jll.com

Walk score **99** | Transit score **100**



**Pat Pendergast**  
+1 206 521 2663  
pat.pendergast@jll.com

**Adam Chapman**  
+1 206 521 2672  
adam.chapman@jll.com