



For sale

503 & 890
Bickerstaff Road
Henrico, VA

421
Osborne Turnpike
Henrico, VA

In-fill development opportunity
Call for offers - October 23, 2024





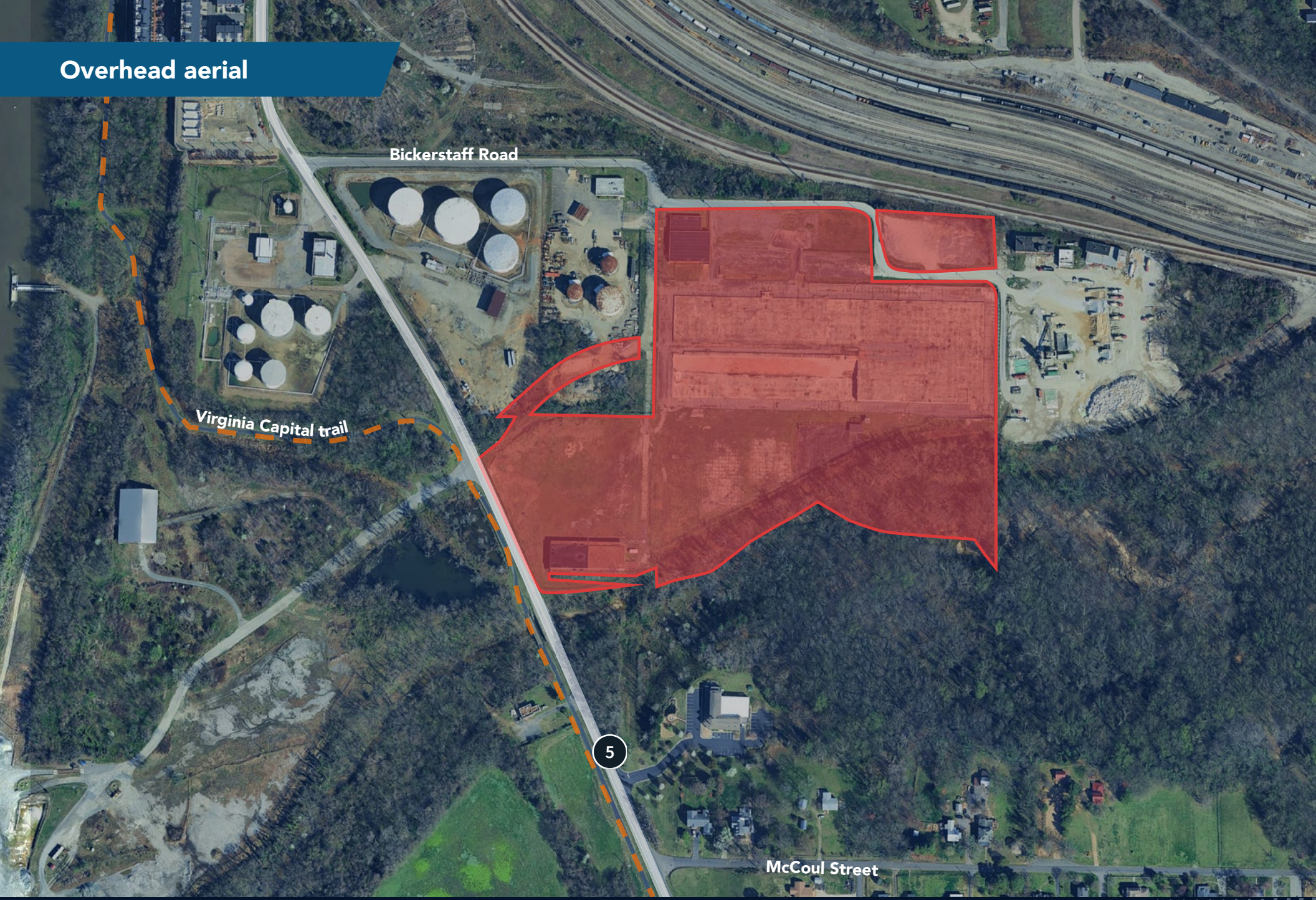
Property Overview

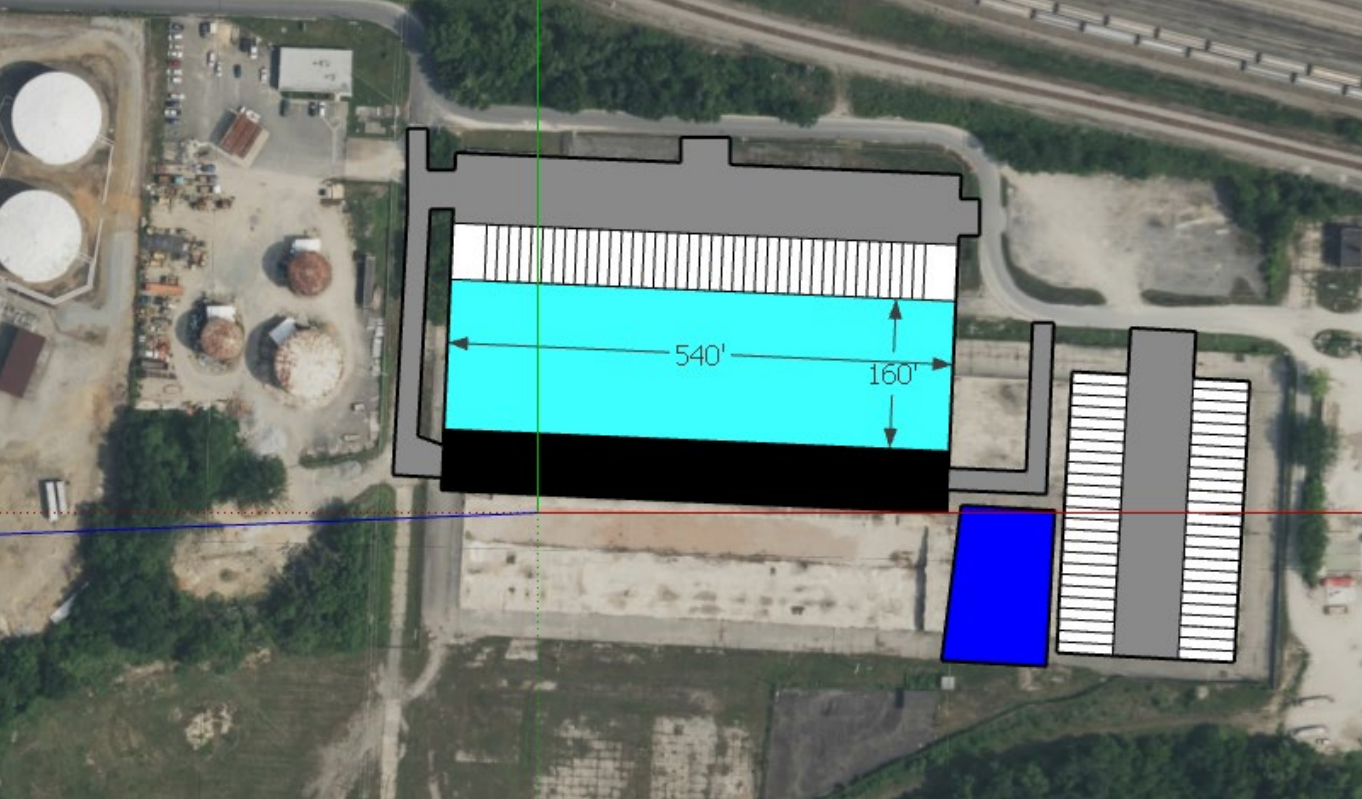
JLL and the Commonwealth of Virginia offer for sale 21.35 acres of premiere developable land in Henrico County, VA. Zoned M-2 and located in an Opportunity Zone, this redevelopment site offers prospective buyers with an ideal infill industrial or outdoor storage opportunity. Located along the I-95 industrial corridor, the site sits minutes from the Richmond Central Business District on Virginia State Route 5. The property benefits from 400 Ft. of frontage along Old Osborne Turnpike (Rt. 5) and 1,500 Ft. facing Bickerstaff Rd. Formerly the Virginia Department of Transportation Central Warehouse, the state now offers for sale this land with a call for offers by October 2024. Please contact JLL listing agents for more details and tour opportunities.

Highlights

- Ideal infill industrial development site
- Suitable for IOS / outdoor storage
- Zoned M-2
- Located in Henrico County
- 21.35 acres
- Opportunity zone
- 3.5 miles to S. Laburnum & I-895
- Proximate to Rockett's Landing

Overhead aerial

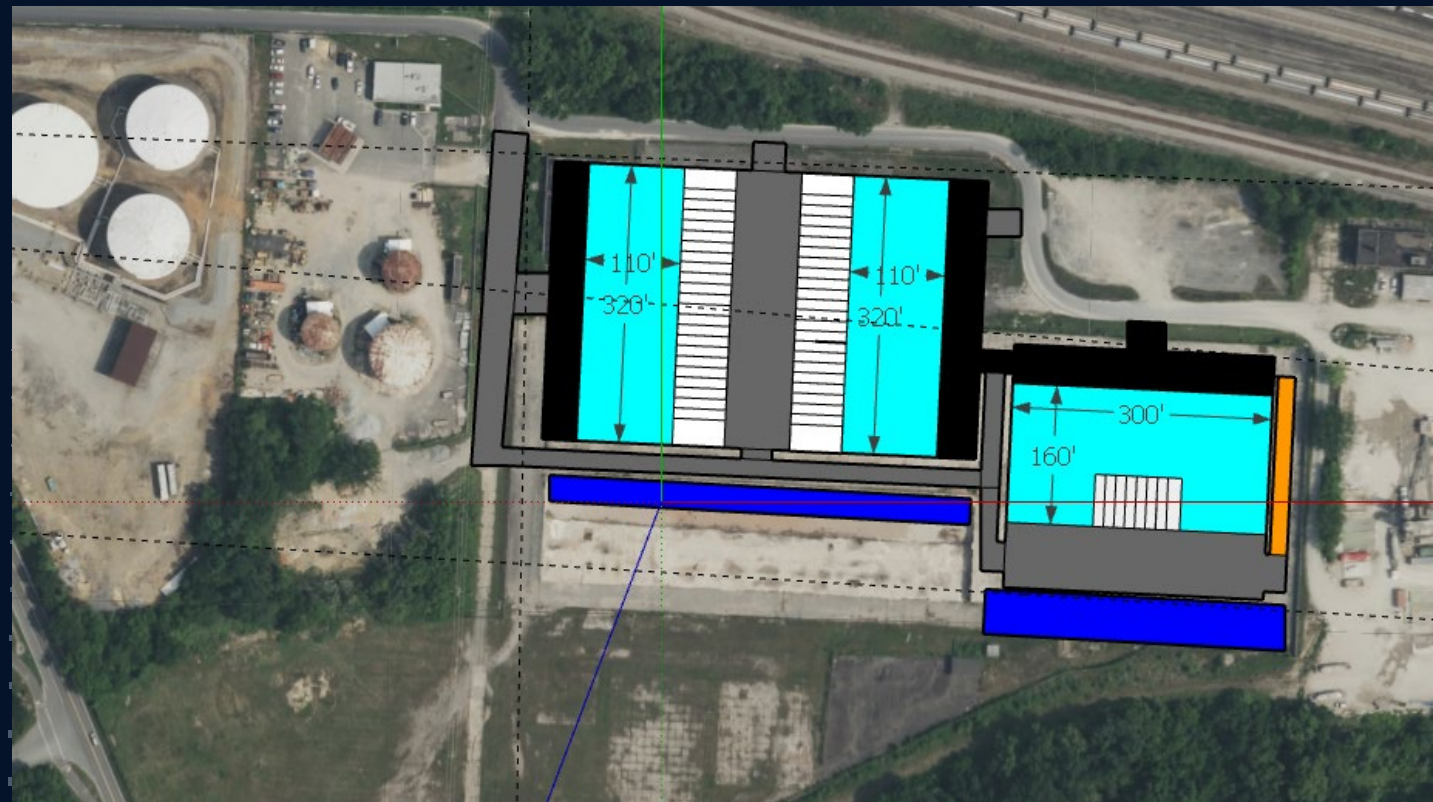




Sample site designs

503 & 890 BICKERSTAFF ROAD
HENRICO, VA

421 OSBORNE TURNPIKE
HENRICO, VA



Corporate Neighbors



PROPOSED
16,000 SF OFFICE
4,000 SF RETAIL

PROPOSED
60,000 SF OFFICE

PROPOSED
3,200 SF RETAIL
276 APARTMENTS

203 MF UNITS
UNDER
CONSTRUCTION

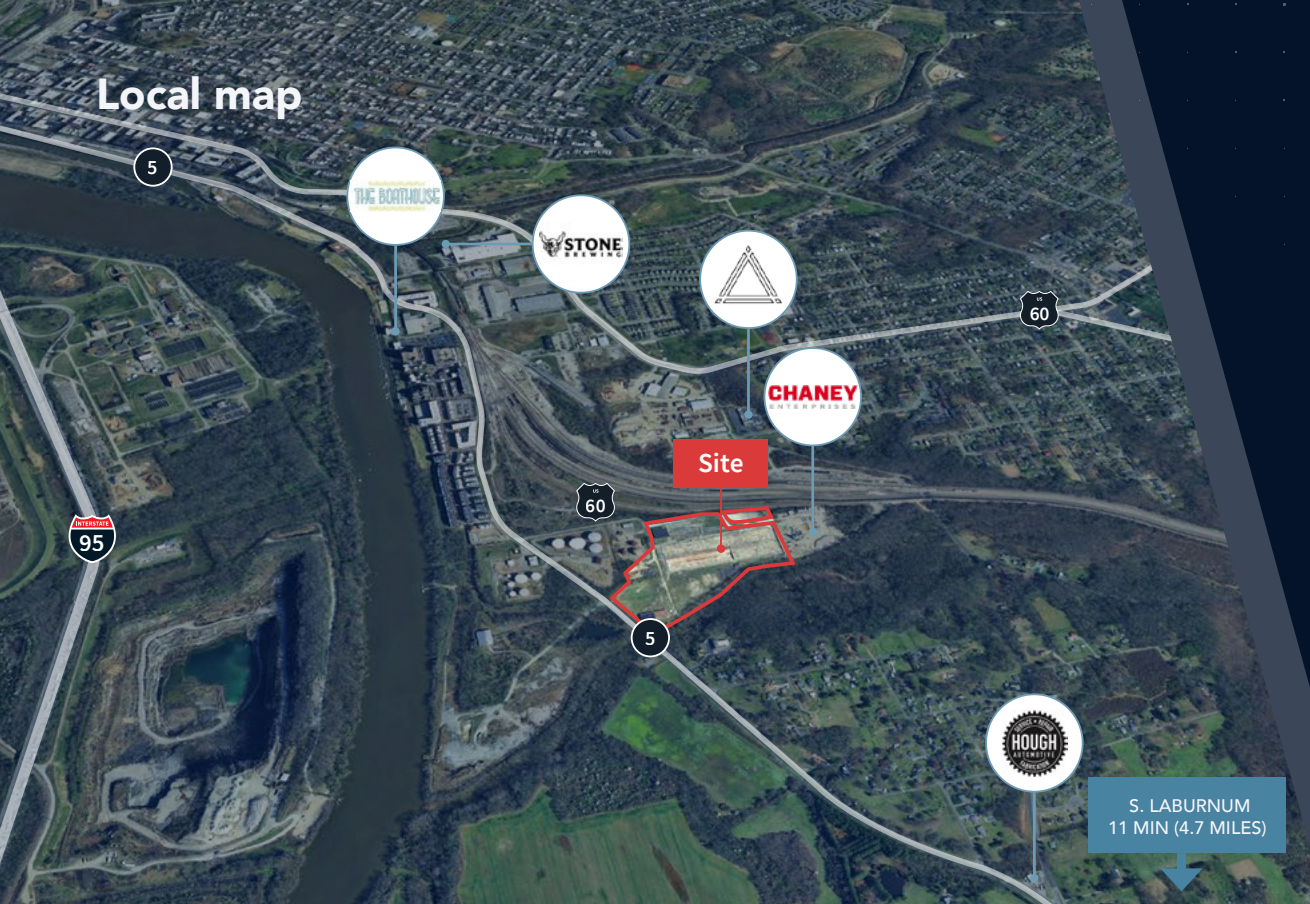


PROPOSED
21,000 SF OFFICE

PROPOSED
65,000 SF OFFICE
15,000 SF RETAIL
259 APARTMENTS



Local map



**503 & 890 BICKERSTAFF ROAD
HENRICO, VA**

**421 OSBORNE TURNPIKE
HENRICO, VA**

For additional information:

Jimmy Appich
Executive Managing Director
jimmy.appich@jll.com
+1 804 200 6420

John Simmons
Vice President
john.simmons@jll.com
+1 804 396 0642

Kyle Vernon
Transaction Manager
kyle.vernon@jll.com
+1 804 225 3771

Creighton Armstrong
Senior Managing Director
creighton.armstrong@jll.com
+1 202 719 6190



Although information has been obtained from sources deemed reliable, JLL does not make any guarantees, warranties or representations, express or implied, as to the completeness or accuracy as to the information contained herein. Any projections, opinions, assumptions or estimates used are for example only. There may be differences between projected and actual results, and those differences may be material. JLL does not accept any liability for any loss or damage suffered by any party resulting from reliance on this information. If the recipient of this information has signed a confidentiality agreement with JLL regarding this matter, this information is subject to the terms of that agreement.
©2024 Jones Lang LaSalle Brokerage, Inc. All rights reserved.

Regional map

