



# For Sublease

Contact Pointe

3210 Lake Emma Road, Lake Mary FL

**Suite 200: ± 15,000 SF Available**



# CONTACT POINTE

## SUITE 200

**±15,000 SF office sublease available**



Total building size  
92,127 SF



Second floor available  
(7,000 SF - 15,000 SF)



Approximately 7,000 SF  
available unfurnished



Close proximity to I-4 and  
SR- 417 and area amenities



Shared reception, main  
conference and break room  
with the adjacent tenant



Rental rate \$22.50/SF FS



Parking ratio 7/1000

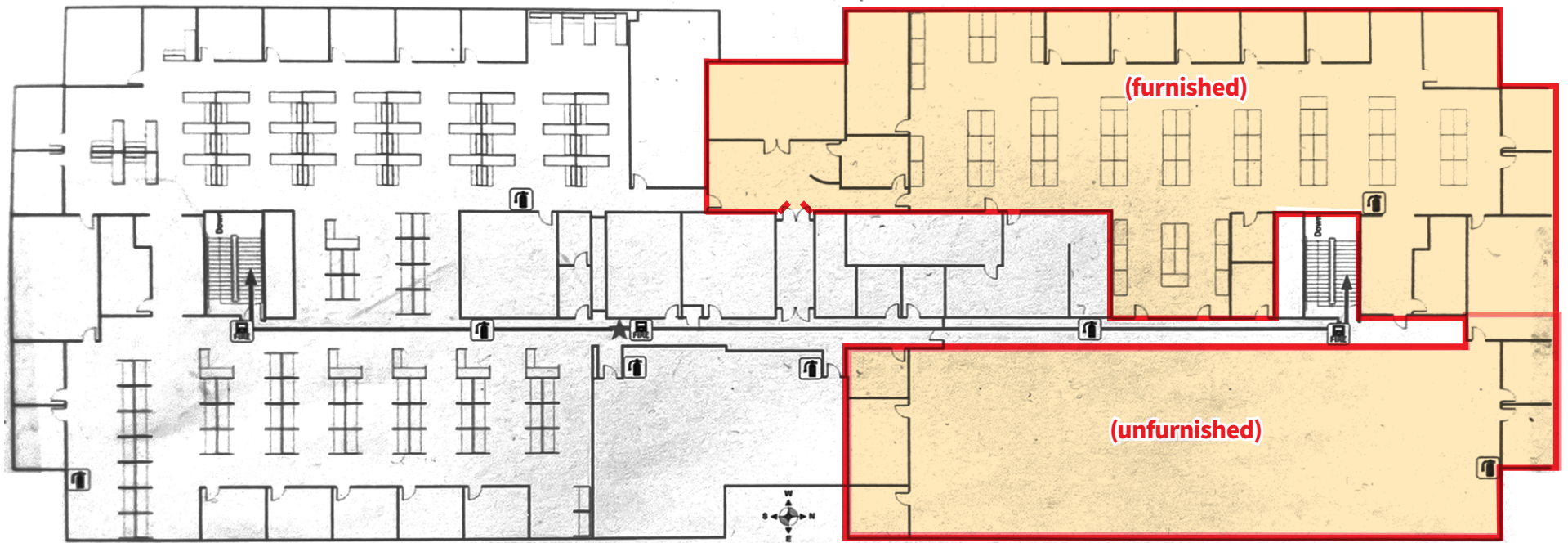


Sublease term:  
October 31, 2025



# FLOOR PLAN

Suite 200: ± 15,000 SF Available



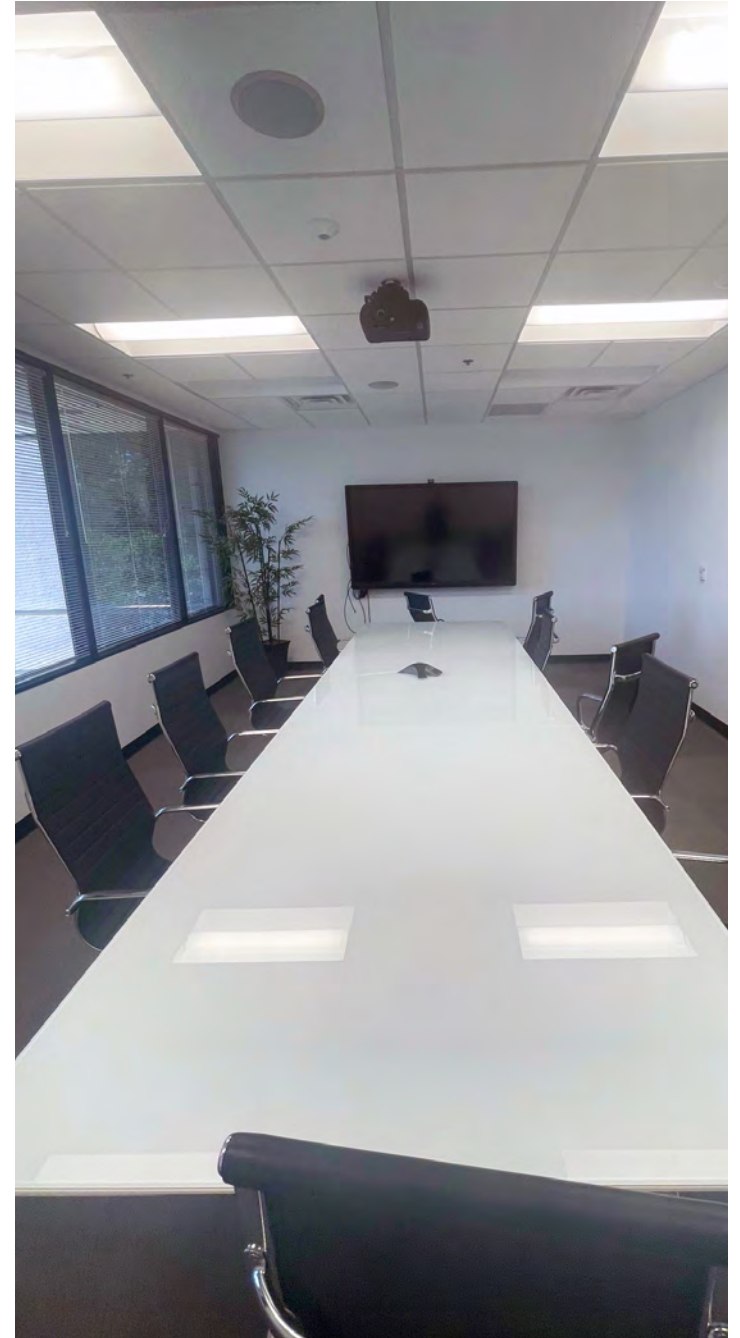


# PHOTOS





# PHOTOS





# AREA MAPS







Contact Pointe | 3210 Lake Emma Road  
Lake Mary, FL 32746





[jll.com/orlando](https://jll.com/orlando)

Contact Information:

**Nick Poole, MSRE**

Managing Director

[Nick.Poole@jll.com](mailto:Nick.Poole@jll.com)

+1 407 982 8597

**Cody Manzella**

Senior Vice President

[Cody.Manzella@jll.com](mailto:Cody.Manzella@jll.com)

+1 407 982 8542